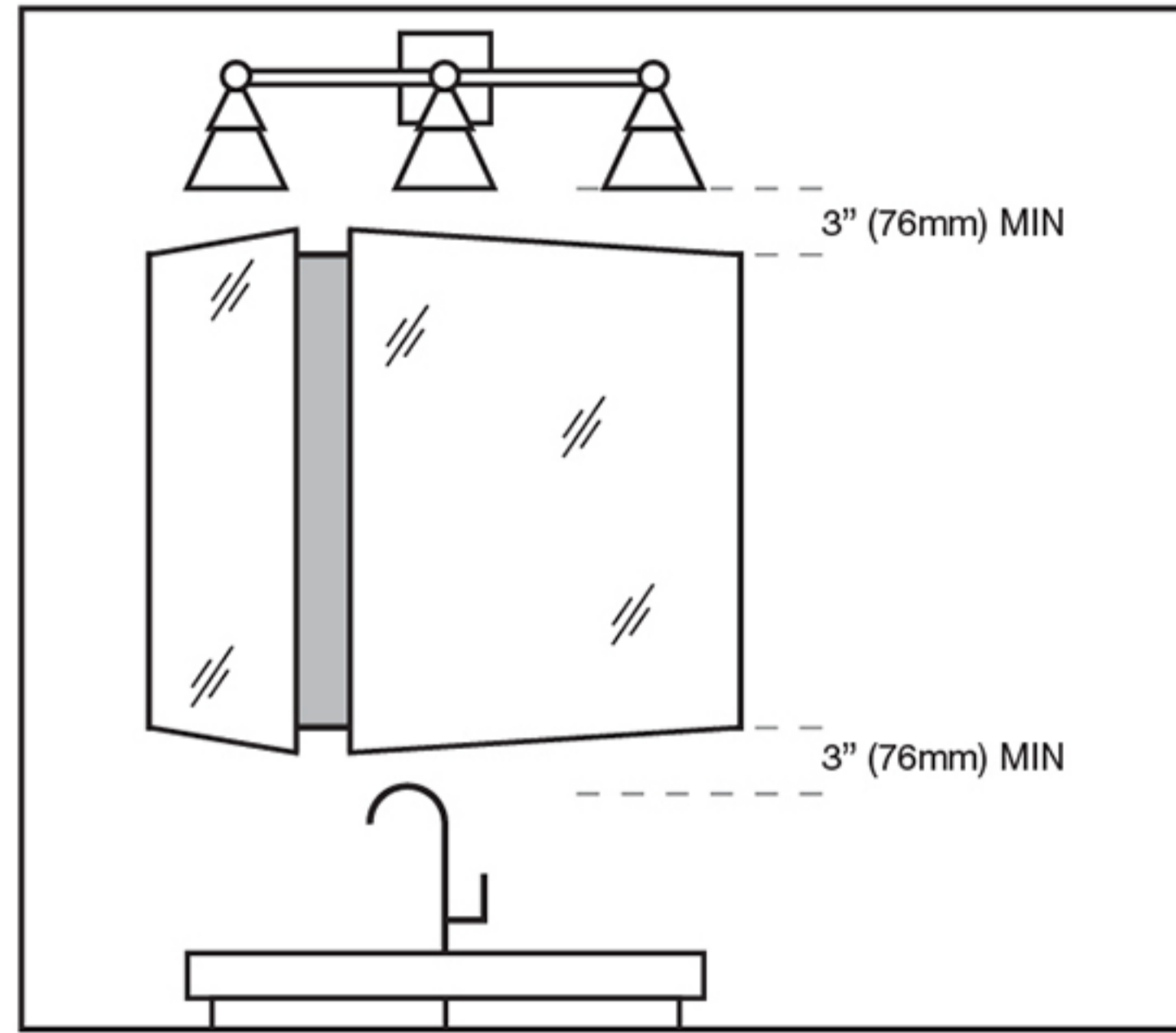


THREE STEPS TO SELECTING THE RIGHT MEDICINE CABINET

STEP 1

Confirm size and clearance

Whether surface-mounted or recessed, your KOHLER® medicine cabinet must clear the lowest point of the lights and the highest point of the faucet by a **minimum of 3" (76 mm)** respectively.



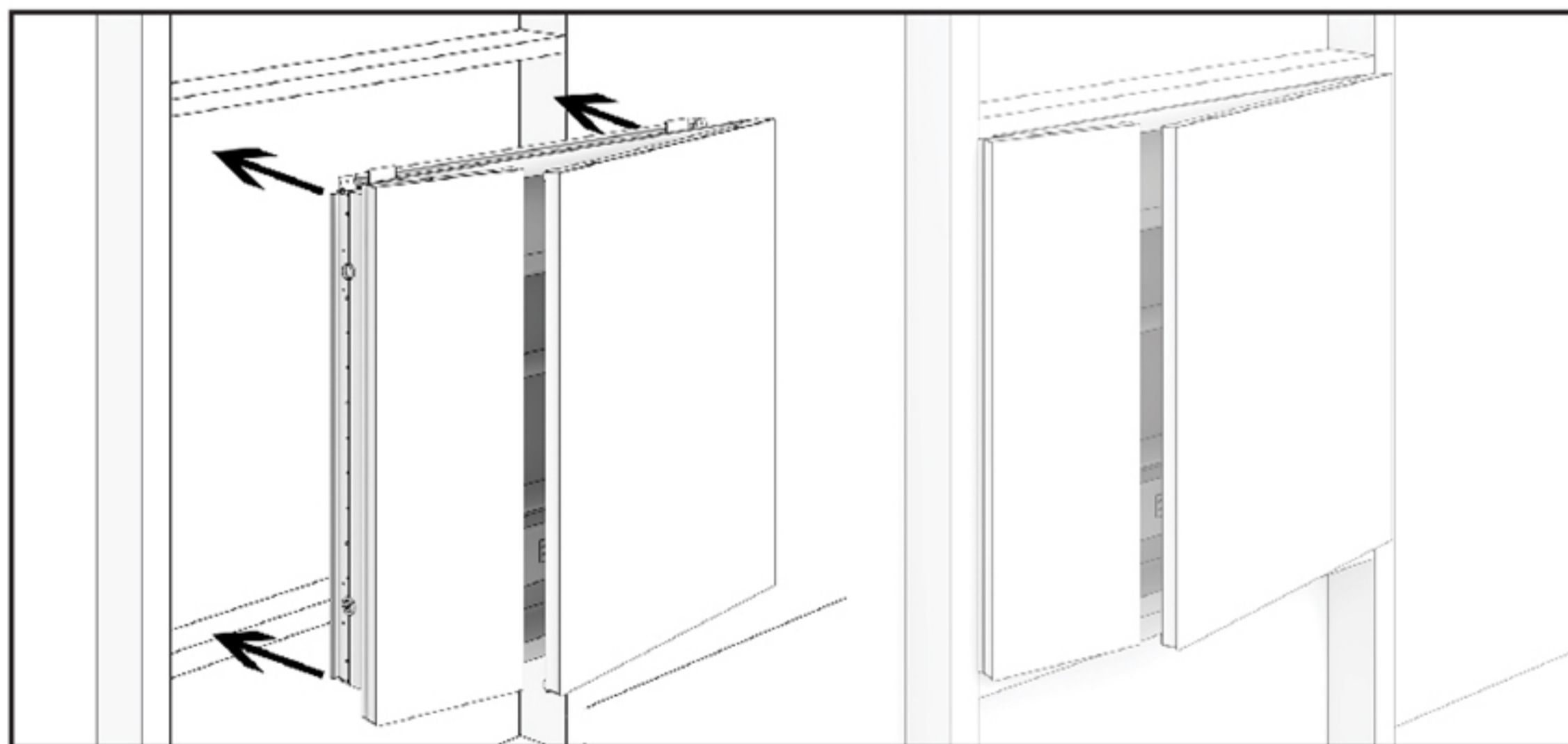
STEP 2

Select the right installation type for your space

Most KOHLER medicine cabinets can be either recessed or surface-mounted. Check your cabinet's installation instructions for complete details.

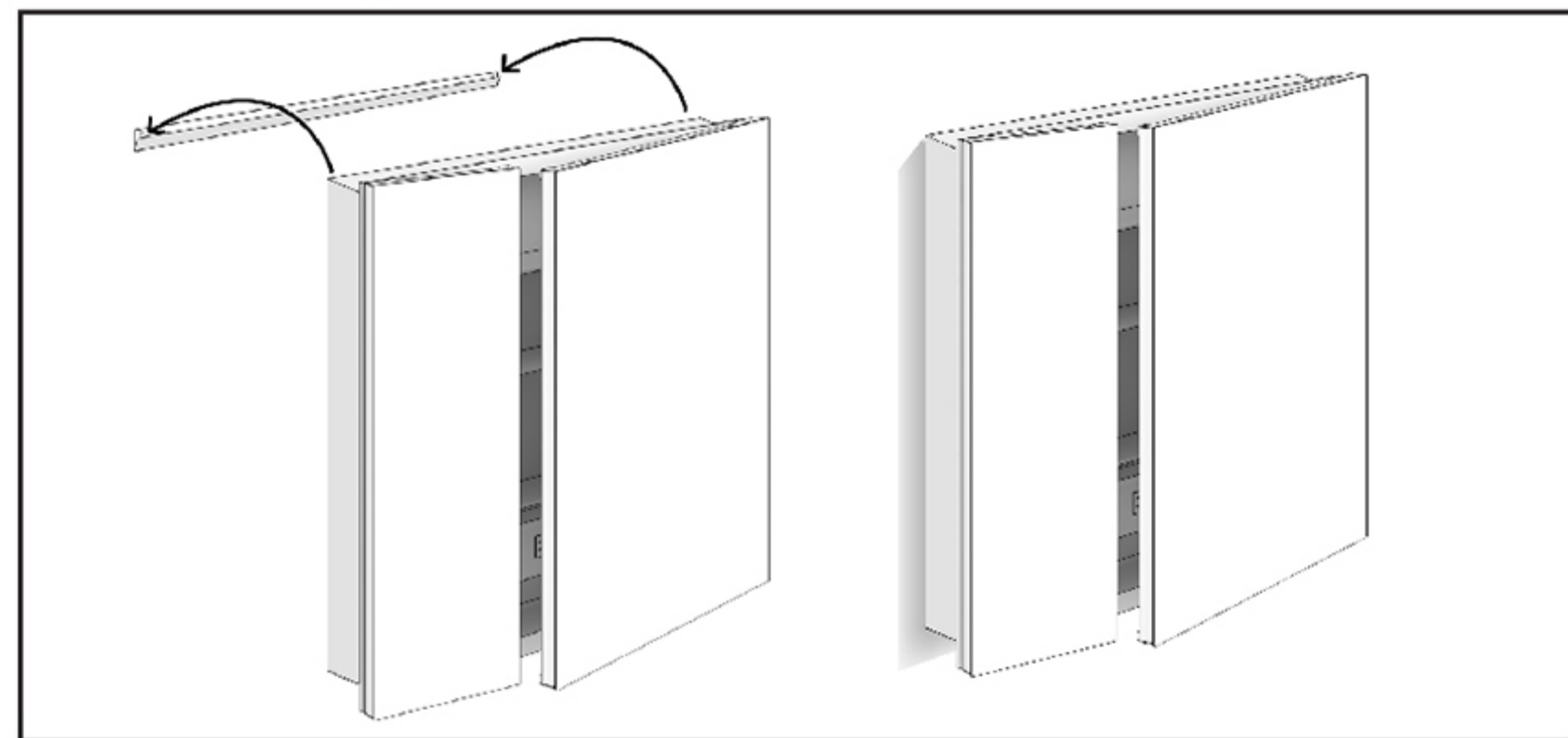
RECESSED

Recessed cabinets sit between the studs **inside** the wall.



SURFACE-MOUNT

Surface-mounted cabinets hang **flush against** the wall, no cutting required.



STEP 3

Consider level of difficulty

RECESSED

Installing a recessed cabinet requires a little higher skill level to cut into the wall and build the framework for the cabinet.

DIFFICULTY:



SURFACE-MOUNT

Surface-mounted cabinets hang on a bracket on the wall for easy installation.

DIFFICULTY:

