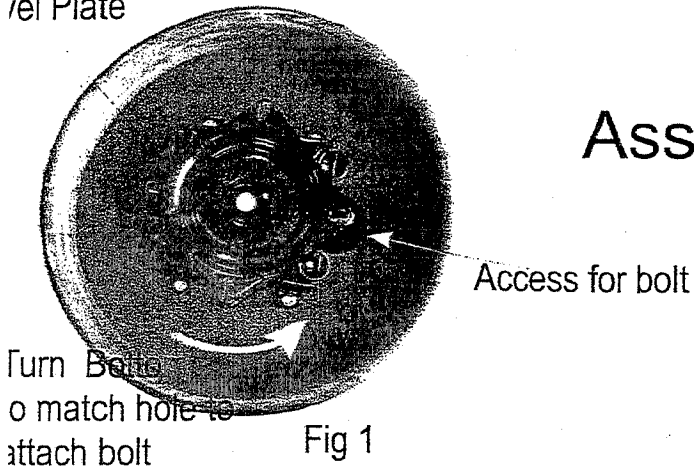


Washers(4) Nut and Bolts(4) (2) Seat

Swivel Plate



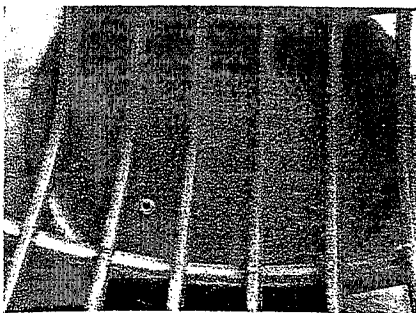
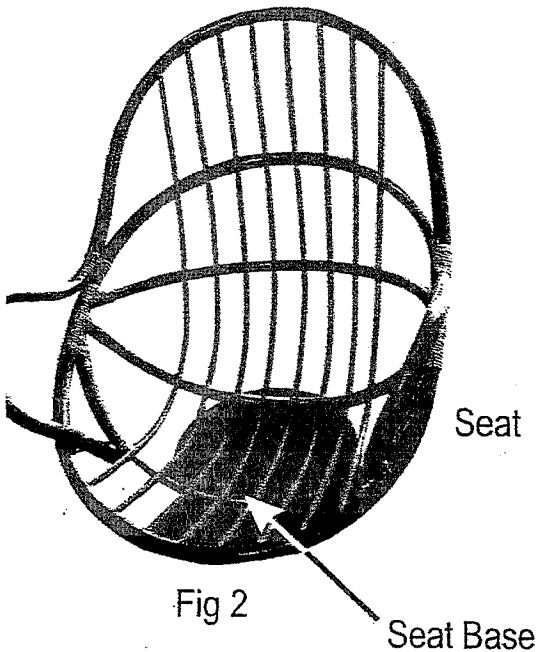
Assembly Instructions for 3310

1. Begin with the Swivel Rocker Base. Prepare the Swivel plate, by moving the plate so that one of four bolt holes are exposed to the access hole in Rocker base. See Fig 1.

2. With a socket set and an extension, place the head of the bolt in the socket. Put this thru the access hole in the base, then thru the swivel plate and hold in place while it is on it's side.

3. Place the Seat on top of the base and turn both on their side to access. Place the washer, then run on one of the pre drilled holes located at bottom of the seat. See Fig 3. Do not tighten until all bolts have been attached between the swivel plate and bottom of seat, so that the other bolts will be easier to attach.

4. Once you have attached one bolt, the others will follow the pattern. Simply turn the bottom plate so that the next bolt is directly over the larger hole. Repeat this until all 4 bolts, washers and nuts are attached. Tighten all the bolts as shown in Figures 1-3. Enjoy.



Bottom of seat with correct washer and nut placement.

Fig 3

Tools Needed: Socket and extension, Crescent wrench or Pliers.