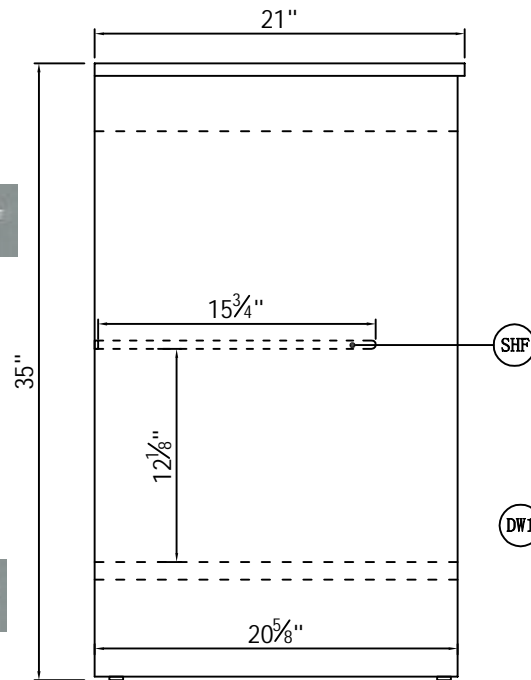
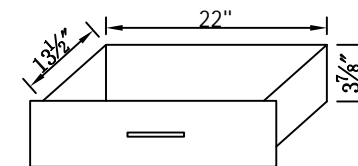


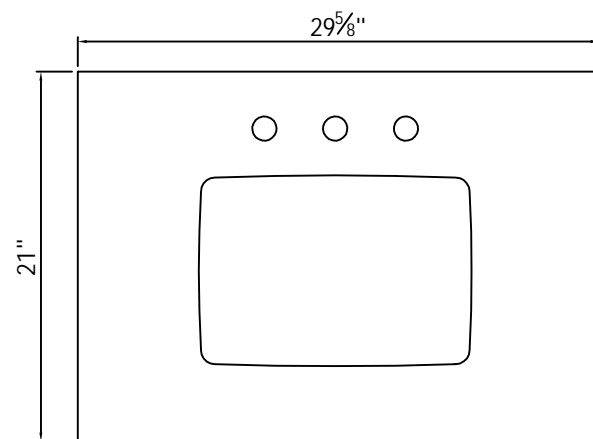
Front view



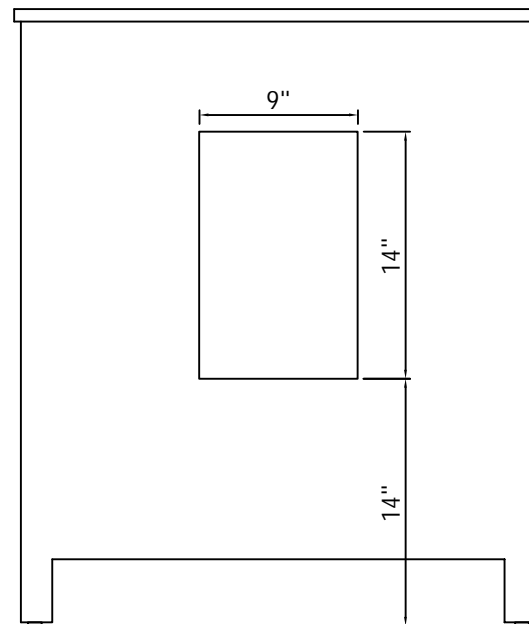
Side view



Drawer Interior Size



Top view



DWG. NO.	
MODEL NO:	
SPEC NO:	
QUANTITY:	
DATE:	
CHECKED BY:	
FOR PROPOSAL ONLY ALL DIMENSIONS TO BE VERIFIED	
PROJECT:	
COLOR:	
FINISH:	
REVISIONS	
1	
2	
3	
4	
5	
6	

Model #		Finish	White	Mirror type	N/A	Beveled glass	N/A	Frame material	Solid wood and MDF
Solid wood construction	Solid wood legs	Drawers Included	Yes	Number of Drawers	1	Joinery Type	SQUARE ENDED BUTT JOINT	Drawer railing	Metal
Drawer Length	24-1/4"	Drawer Width	14"	Drawer Height	6-1/2"	Shelves	Yes	Number of Shelves	1
Doors included	Yes	Number of Doors	2	Finished Back	Yes	Hardware finish	aluminum alloy	Assembly	No
Countertop included	Yes	Countertop material	Marble	Number of Sinks accommodated	1	Sink material	Porcelain	Sink length	15
Sink width	12.00	Sink height	7.00	Sink hole size	1.75	Mounting type	Free-Standing	Backsplash	No
Backsplash length	N/A	Backsplash width	N/A	Backsplash height	N/A	Drain assembly included	No	Faucet included	No
Faucet type	No	Faucet hole size	1.50	Faucet hole spacing	8"3 Holes	Length/Diameter	30.00	Width	21.00
Height	35.00	Package LENGTH (inches)	35.25	Packaged WIDTH (inches)	26.380	Packaged Height(inches)	40.75	Package Weight (lbs)	108.24
Product Weight	89.32	Shipment Type	LTL	table top width	21"	table top finish	Carrara white	glass top tempered	N/A
table top maximum weight	66 LBS	Table: seating capacity	1	upholstery color	N/A	upholstery pattern	N/A	cushion material	N/A
base finish	White	powder coated finish	NO	base material	MDF	top material	Marble	wood species	Rubberwood
tip over restraint strap	NO	shape of top	Rectangle	lift top	NO	shelf material	MDF	adjustable shelves	NO
Drawer Handle designs & Door Knob Model	Bar pulls/KB115 & KB116	safty stop	Yes	felt lined drawers	NO	drawer glide extension	Full extension	drawer glide material	Metal
drawer dividers	NO	Drawer Interior finish	White	Ball Bearing Glides	NO	soft close drawer glides	YES	Number of cabinets	1
shelf height	12-1/8"	shelf width	24-1/2"	shelf depth	15-3/4"	Shelf thickness	1/2"	Any certification?	NO
California Proposition 65 warning required	YES	Drawers Interior Height	3-7/8"	Drawer Interior Width	22"	Drawer Interior Depth	13-1/2"	cabinet interior height	12-1/8"
cabinet interior width	24-1/2"	cabinet interior depth	18-3/8"	leg height	3-3/4"	leg width	1-3/4"	leg depth	1-3/4"
glass finish	N/A	stackable	NO	leg design	Block feet	Armoires: ring slots	N/A	Armoires: hooks	N/A
armoires: mirror dimensions	N/A	door thickness	7/8"	false drawers?	NO	sink type	Undermount	# of faucet holes	3

<b>DWG. NO.</b>	
<b>MODEL NO:</b>	
<b>SPEC NO:</b>	
<b>QUANTITY:</b>	
<b>DATE:</b>	
<b>CHECKED BY:</b>	
<b>FOR PROPOSAL ONLY ALL DIMENSIONS TO BE VERIDIED</b>	
<b>PROJECT:</b>	
<b>COLOR:</b>	
<b>FINISH:</b>	
<b>REVISIONS</b>	
①	
②	
③	
④	
⑤	
⑥	