

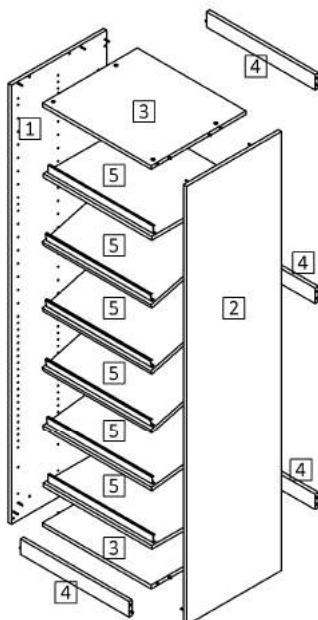
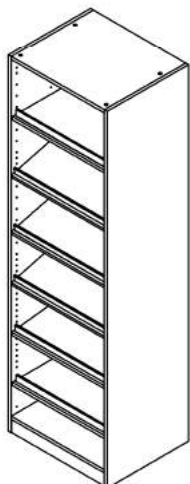
ASSEMBLY INSTRUCTIONS:

- 1- PLEASE READ THESE INSTRUCTIONS COMPLETELY BEFORE STARTING ASSEMBLY;
- 2- THE ASSEMBLY MUST BE EXECUTED ON A FLAT AND CLEAN SURFACE;
- 3- FOR CLEANING PLEASE USE A WATER SEMI WET CLEAN CLOTH FOLLOWING BY A DRY CLEAN CLOTH;
- 4- DO NOT USE ABRASIVES SOLUTIONS;

ASSEMBLY INSTRUCTIONS

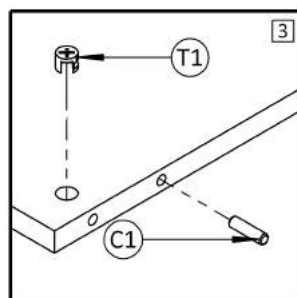
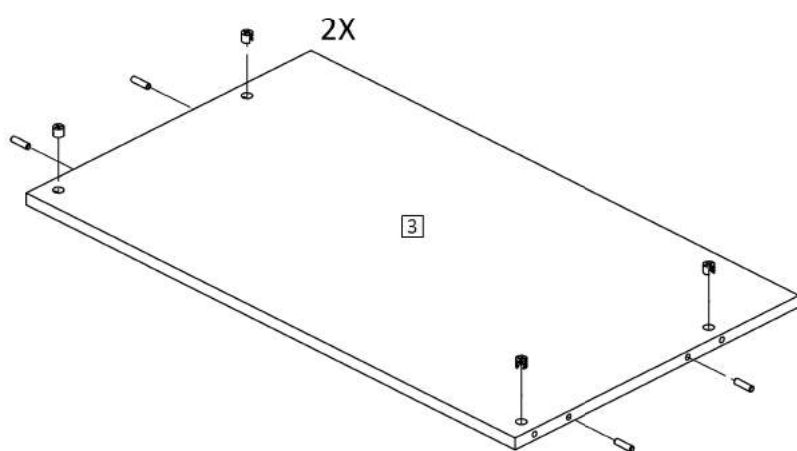
BOX 04

PART LIST		
PART NUMBER	Qty	DESCRIPTION:
1	1	LEFT SIDE PANEL
2	1	RIGHT SIDE PANEL
3	2	BOTTOM/TOP PANEL
4	4	FRAME
5	6	SHOE RACK

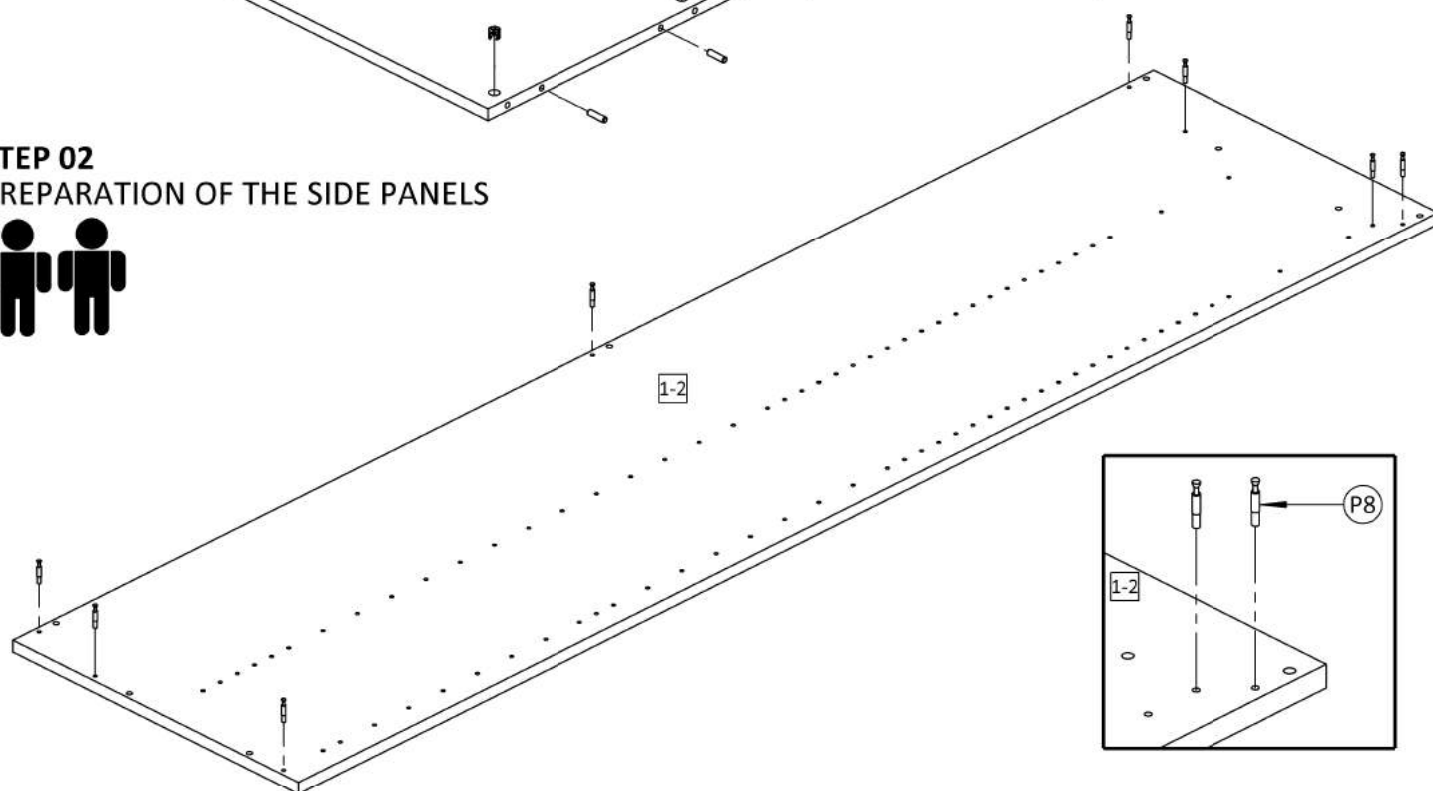


HARDWARE		08	16	16	16	06	06	06	10
		SHELF SUPPORT	CAM LOCK SCREWS	CAM LOCK	DOWEL 5/16 X 1 3/16	SCREW 5/32 X 2 3/4	SCREW 1/4 X 2 3/4	PLASTIC PLUG	SCREW 9/64 X 1 1/4

PREPARATION OF BOTTON/TOP PANELS

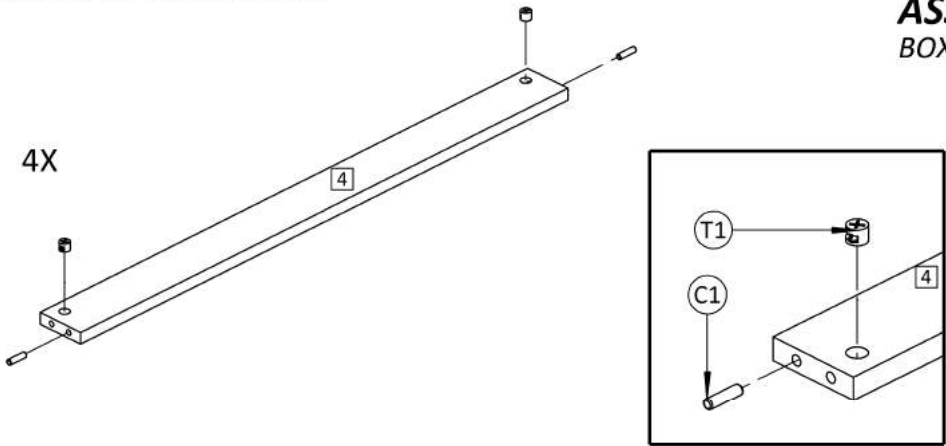


STEP 02 PREPARATION OF THE SIDE PANELS

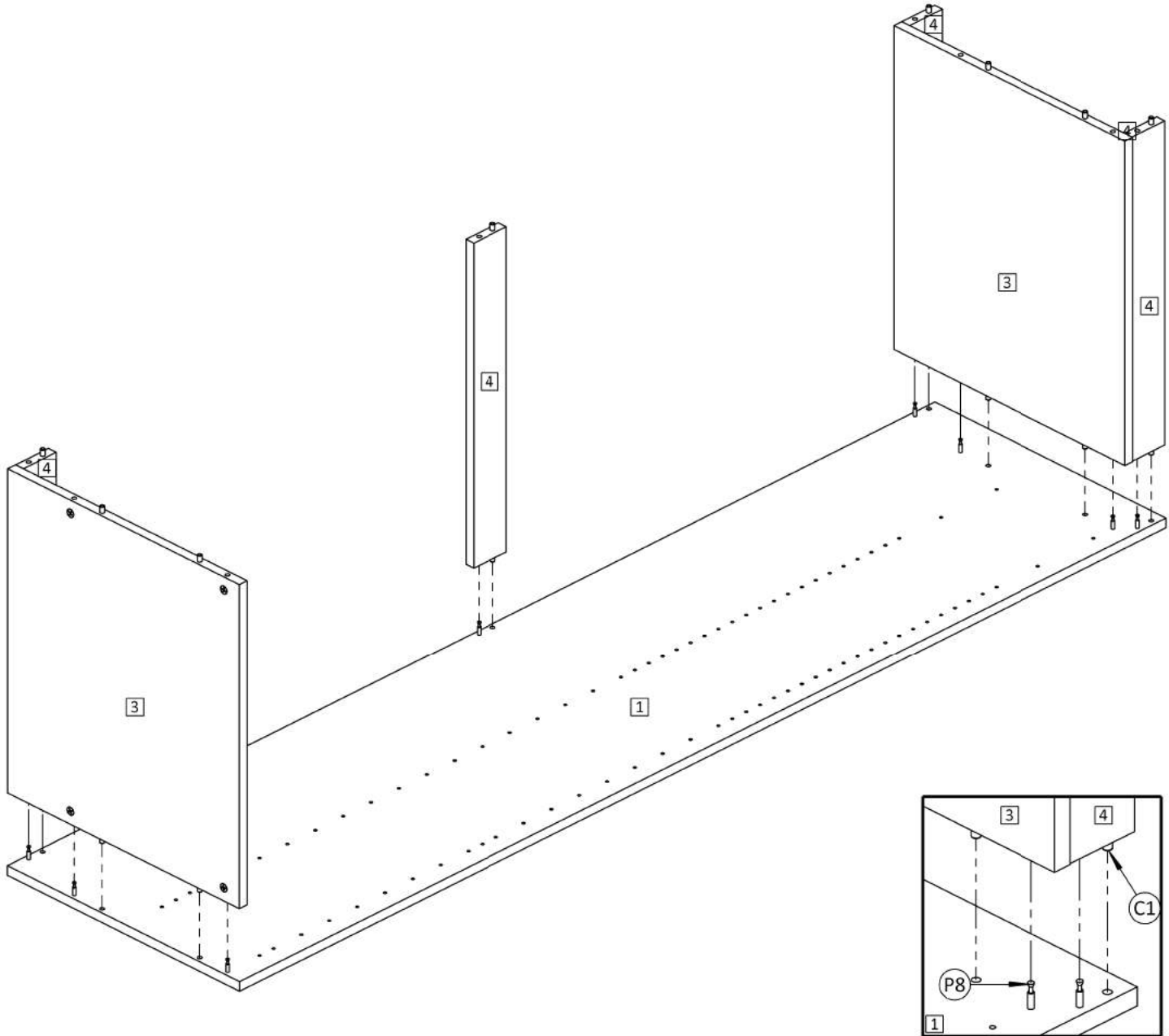


STEP 03
PREPARATION OF THE FRAMES

ASSEMBLY INSTRUCTIONS
BOX 04

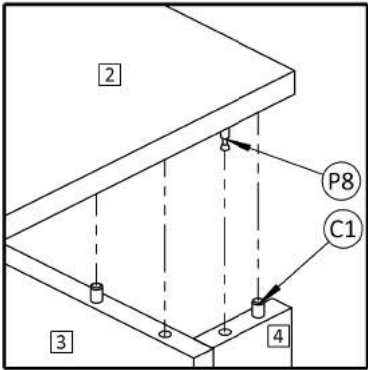
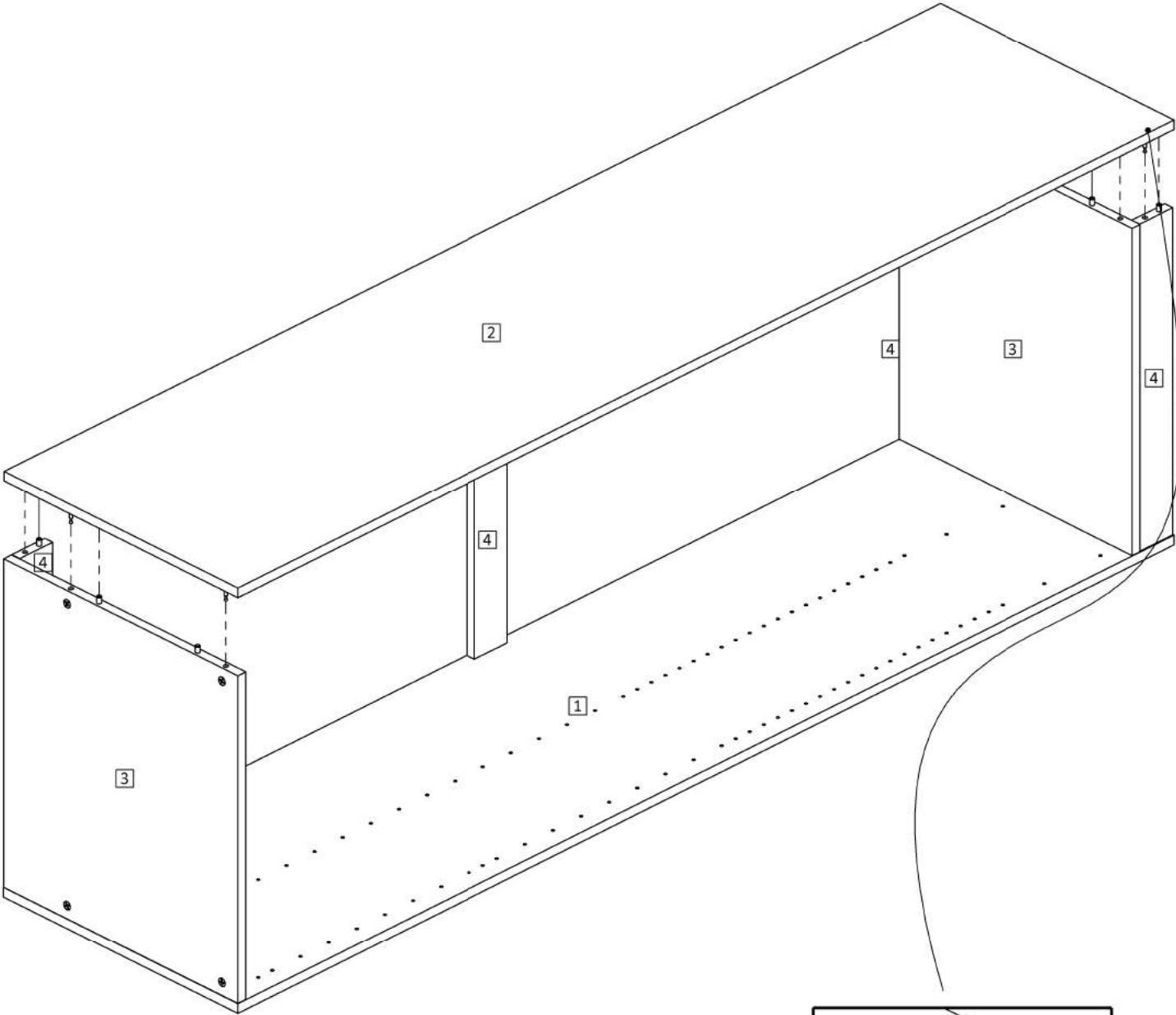


STEP 04
LEFT, TOP, BOTTOM PANELS AND FRAMES ASSEMBLY



STEP 05
RIGHT SIDE PANEL ASSEMBLY

ASSEMBLY INSTRUCTIONS
BOX 04



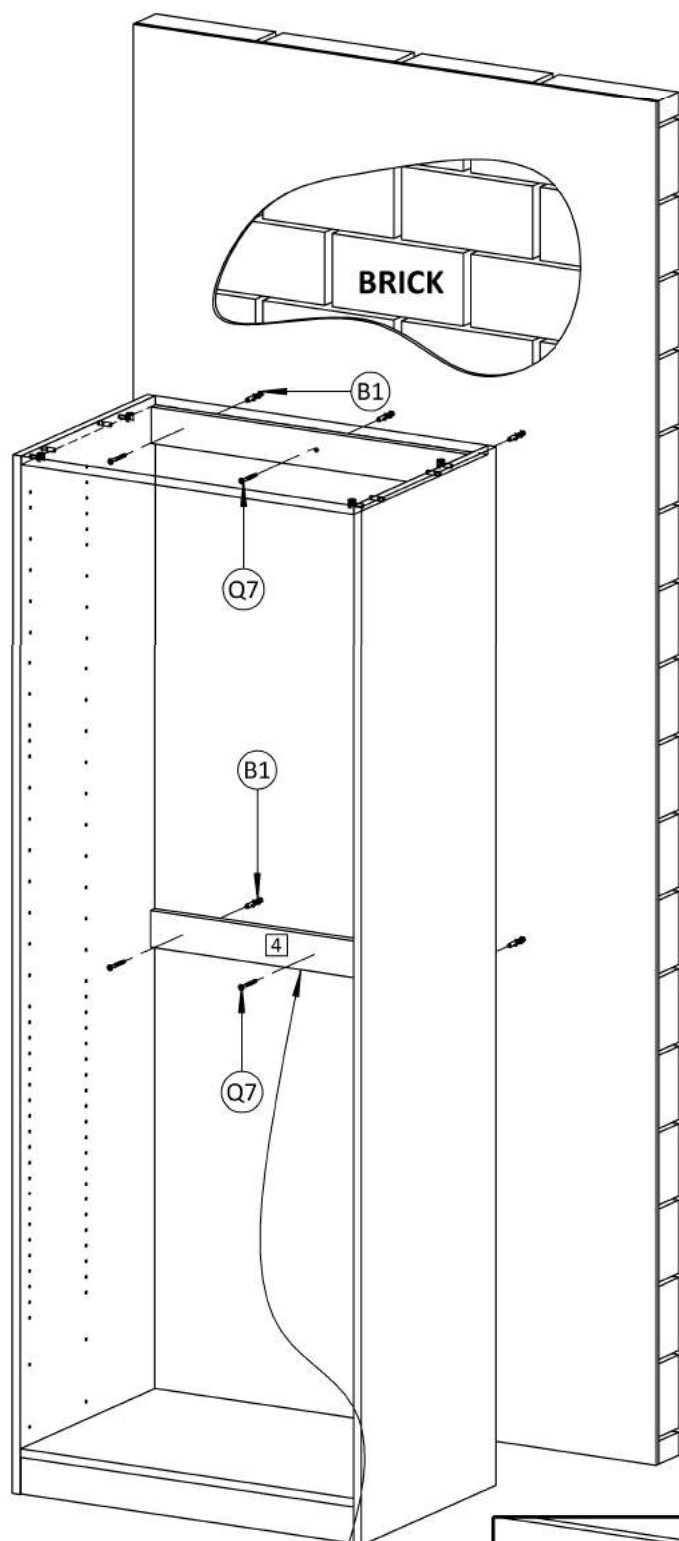
STEP 06
FIXING THE CABINET ON THE WALL



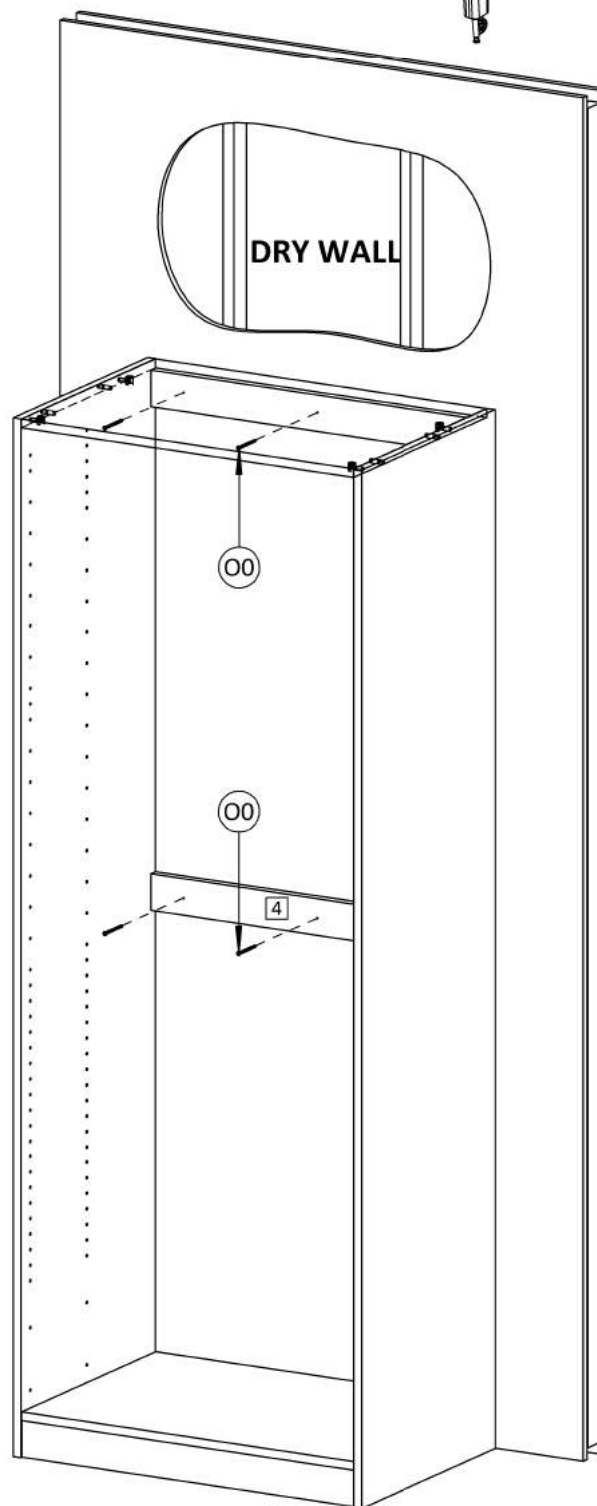
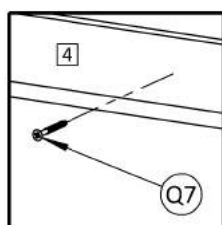
IT IS REQUIRED TO FIX
THE CABINETS ON THE WALL
RISK OF FALL!

ASSEMBLY INSTRUCTIONS
BOX 04

DRILL THE WALL
USING A DRILLER
IN ORDER TO
INSERT THE PLUG



SCREW IN THE CENTER
OF THE FRAME



**THE CABINET MUST ALWAYS BE
SUPPORTED ON THE GROUND**





ASSEMBLY INSTRUCTIONS

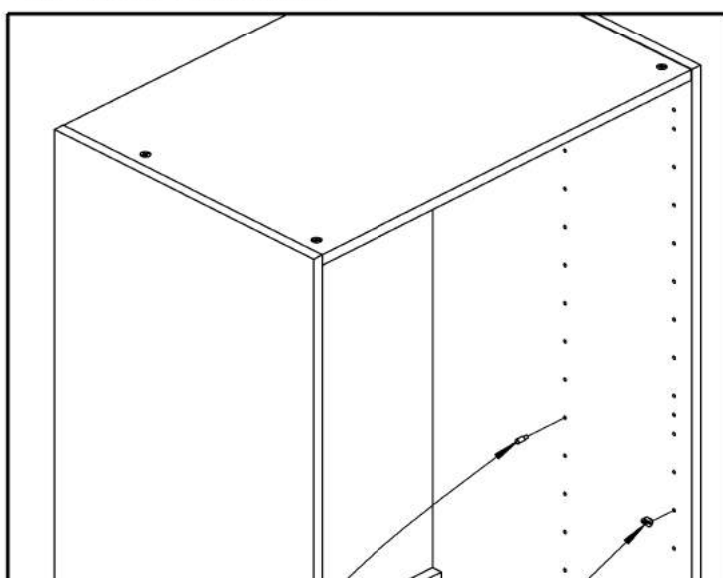
BOX 04

FIXING THE SHOE RACK INSIDE THE CABINET

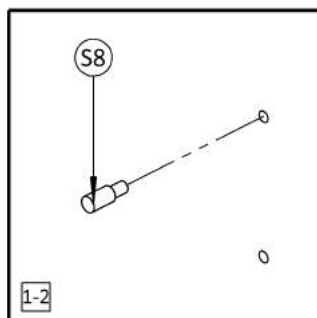
STEP 07

FIX THE SHOE RACK SUPPORTS ON THE SIDE PANNELS

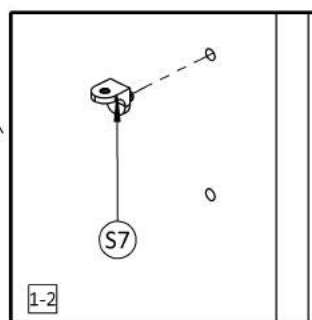
FIXING SHOE RACK HARDWARES	18		12		12		12	
	SCREW 5/32 X 35/64		SHELF SUPPORT		SHOE RACK PIN		SCREW 15/64 X 33/64	



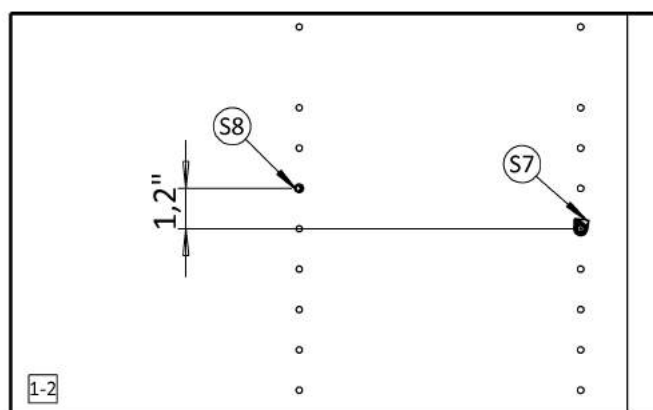
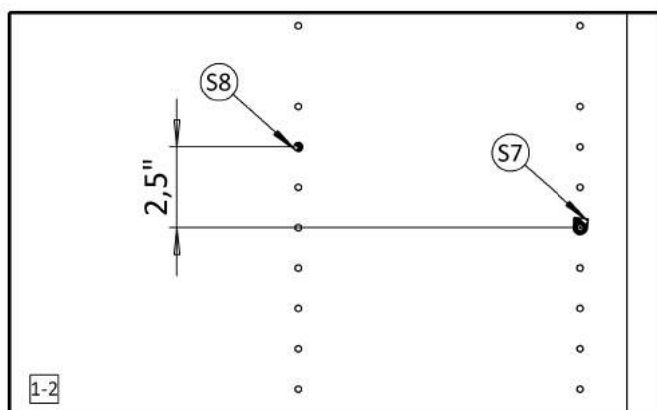
BACK



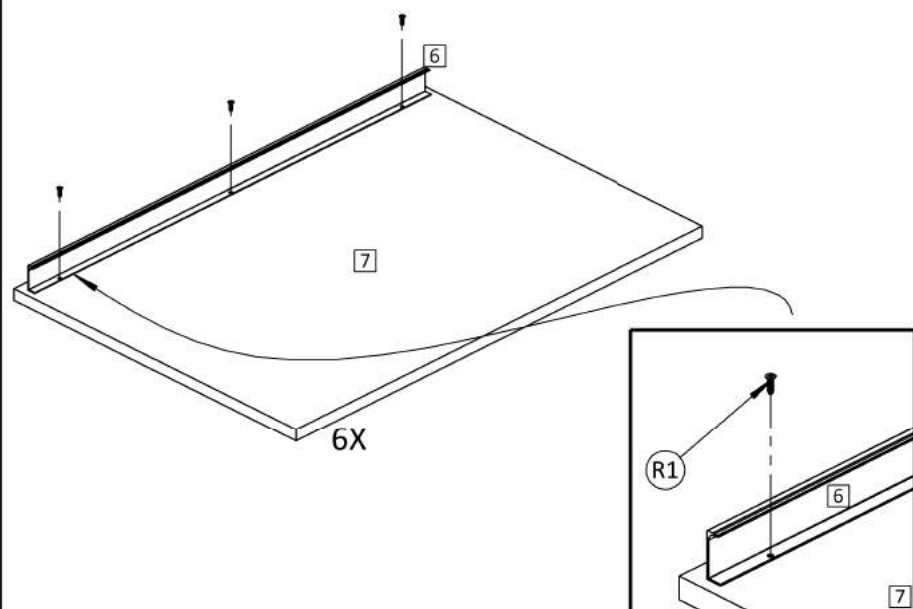
FRONTAL



THE BACK PIN CAN BE FIXED UP 1,2" OR 2,5"
IN RELATION TO THE FRONTAL SUPPORT

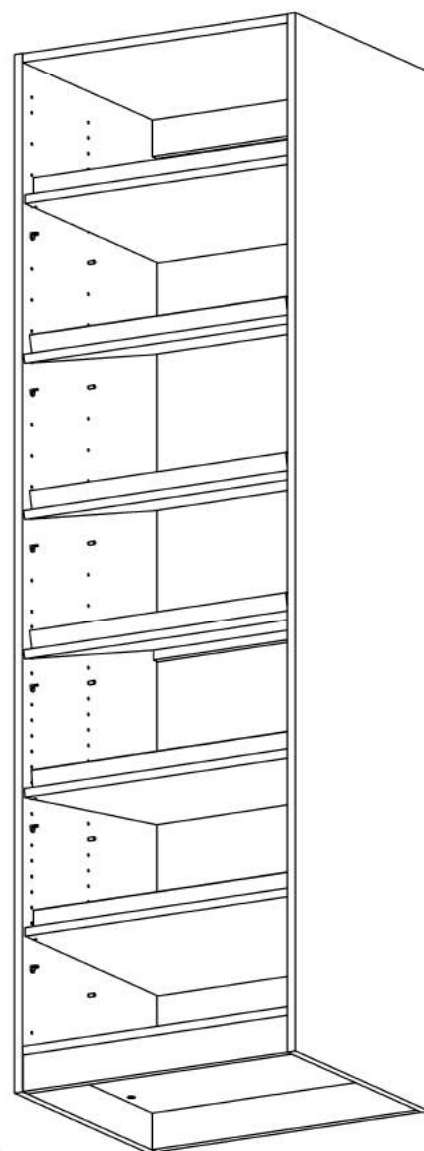
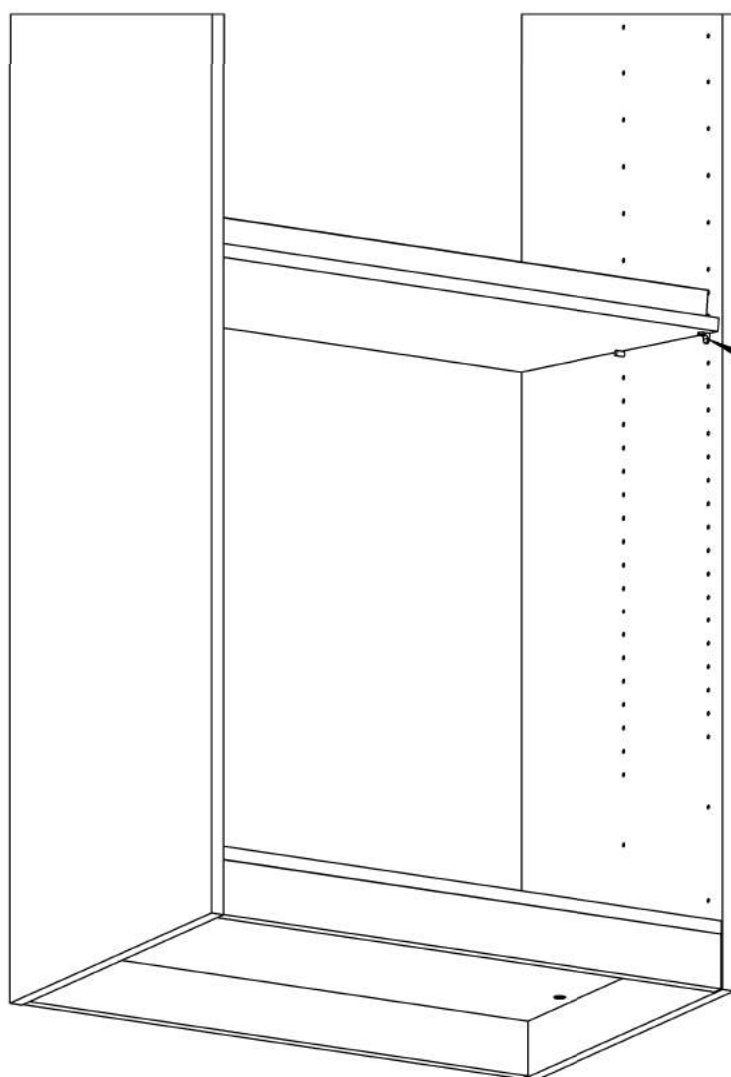


STEP 08
SHOE RACKINSIDE ASSEMBLY

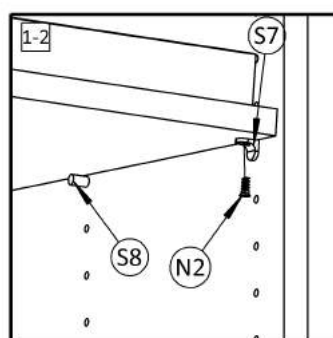


ASSEMBLY INSTRUCTIONS
BOX 04

STEP 08
FIX SHOE RACKINSIDE THE CABINET



FIX THE SHOE RACK SUPPORTS
ON THE SIDE PANNELS



STEP 10
JOIN THE CABINETS

ASSEMBLY INSTRUCTIONS
BOX 04

