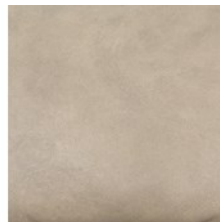


Sling Chair-Umber Natural



OVERVIEW

Super stylish, effortlessly cool. Sling-style seating of light leather sits low and curved for a fresh take on a throwback form. Slim, gunmetal-finished iron framing ups the drama factor of an innately hip design.

Ready for Immediate Shipment: 0

More Arriving Soon: Yes, Late April

PRODUCT DETAILS

Weight: 51.81 lb

Colors: Gunmetal, Umber Natural

Materials: Iron, Top Grain Leather

Volume: 17.66 cu ft

Overall Dimensions: 29.00"w x 36.00"d x 29.00"h

Seat Depth: 20"

Seat Height: 19"

Arm Height from Floor: 20"

Arm Height from Seat: 1"

COLLECTION OVERVIEW

Simple elegance and romance. Each piece is made from hardwoods with handcrafted curves and detailed carving. The collection features upholstery options from velvet and natural linen or cotton to top-grain leathers. Rich color and texture bring sophistication to classic shapes with clean lines and just-right sizing.