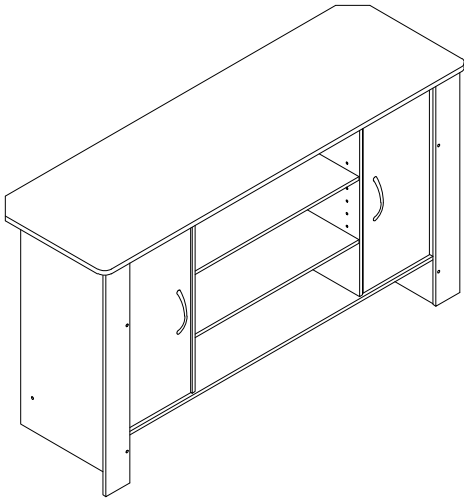


# ASSEMBLY INSTRUCTION

Description: ENTERTAINMENT CONSOLE



## IMPORTANT NOTE:

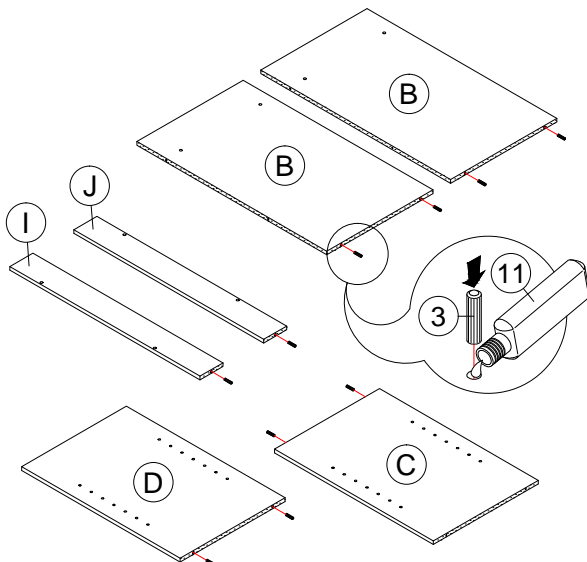
- Place all wooden parts on a clean and smooth surface such as a rug or carpet to avoid the parts from being scratched.
- Check to be sure that you have all parts and hardware.
- Remove all wrapping materials, including staples & packing straps before you start to assemble.
- Do not tighten all screws/bolts until all completely assembled.
- Keep all hardware parts out of reach of children.

### Each Item

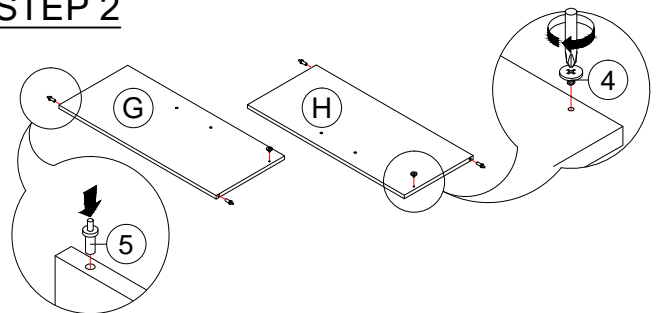
PARTS LIST		
NO	COMPONENT	QTY
A	TOP PANEL	1 PC
B	SIDE PANEL	2 PCS
C	CENTER LEFT PANEL	1 PC
D	CENTER RIGHT PANEL	1 PC
E	SHELF PANEL	2 PCS
F	BOTTOM PANEL	1 PC
G	LEFT DOOR PANEL	1 PC
H	RIGHT DOOR PANEL	1 PC
I	LEFT FRONT PANEL	1 PC
J	RIGHT FRONT PANEL	1 PC
K	LEG PANEL	1 PC
L	BACK PANEL	2 PCS

HARDWARE LIST		
NO	DESCRIPTION	QTY
1	SCREW	14 PCS
2	WOODEN DOWEL	10 PCS
3	MAGNET	2 PCS
4	MAGNET SCREW	2 PCS
5	DOOR SPRING SUPPORT	4 PCS
6	SHELF SUPPORT	8 PCS
7	HANDLE	2 PCS
8	HANDLE SCREW	4 PCS
9	NAIL LEG	7 PCS
10	NAIL	16 PCS
11	GLUE	1 PC

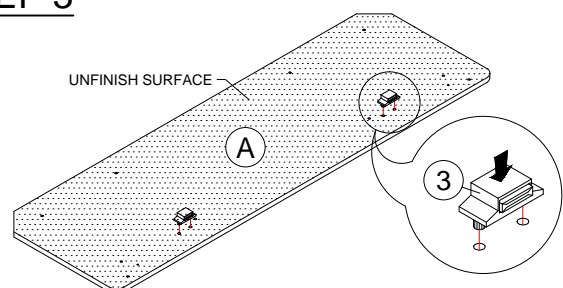
## STEP 1



## STEP 2



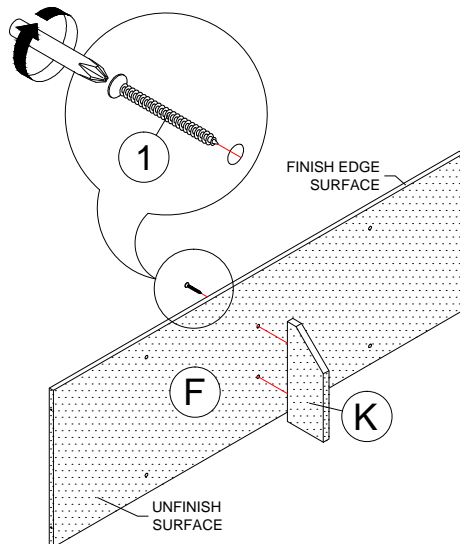
## STEP 3



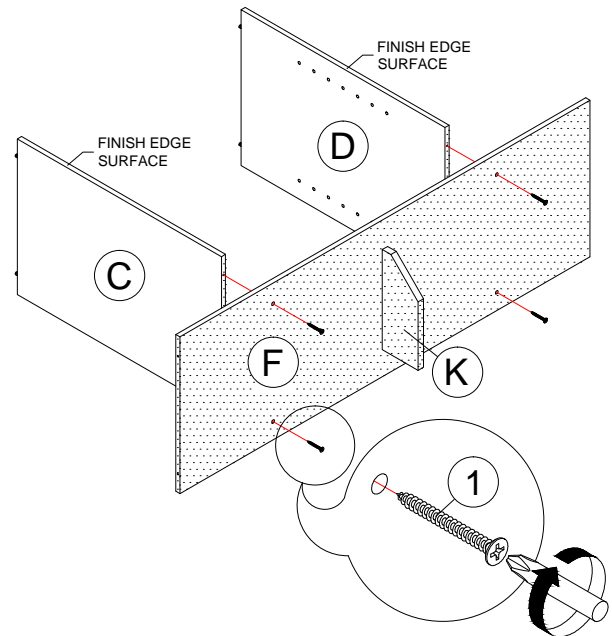
# ASSEMBLY INSTRUCTION

Description: ENTERTAINMENT CONSOLE

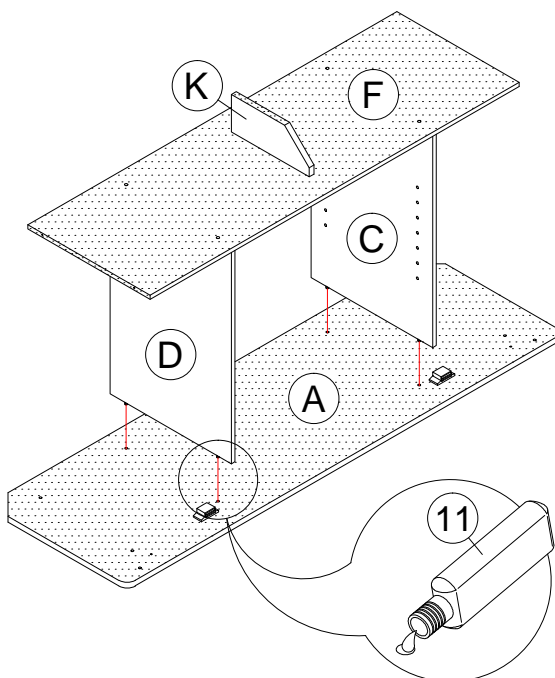
## STEP 4



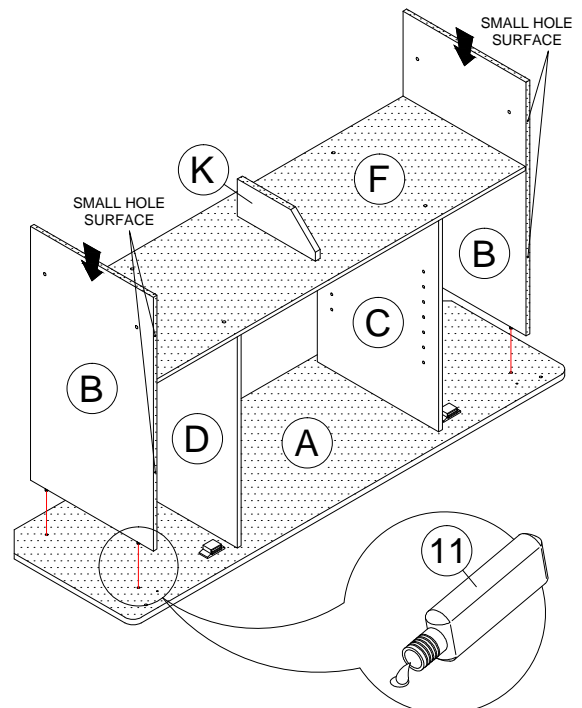
## STEP 5



## STEP 6



## STEP 7



## Description: ENTERTAINMENT CONSOLE

This exploded view diagram illustrates the assembly of the unit. The components are labeled as follows:

- A**: Top panel with a perforated surface.
- B**: Front panel with a perforated surface.
- C**: Middle panel with a perforated surface.
- F**: Side panel with a perforated surface.
- J**: Bottom panel with a perforated surface.
- K**: Small rectangular panel.
- L**: Top panel with a perforated surface.
- 10**: Small rectangular panel, shown being inserted into the bottom panel **J** using a hammer.