



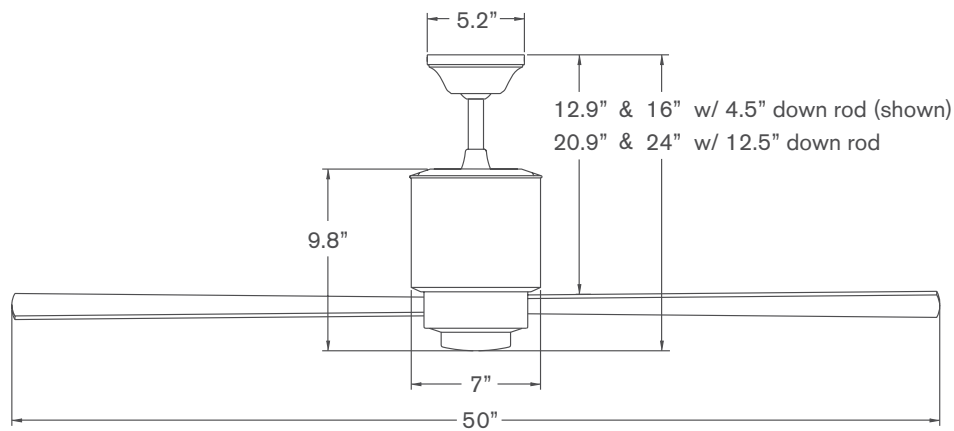
Lapa



Lapa > Configure item number from attributes below.

#LAP	Finish	Blade Span	Blade Color	Light Option	Control Option
-	-	-	-	-	-
	▲	▲	▲	▲	▲
	GW Gloss White	50 50" Span	WH White	NL No Light	001 Fan Speed Only
	BN Bright Nickel		NK Nickel	552 17W LED	002 Fan & Light – 3 Wire
	GV Galvanized		SV Silver		003 Handheld Remote
	DB Dark Bronze		BK Black		004 Fan & Light – 2 Wire
			MP Maple		005 Wall/Remote Combo
			MG Mahogany		

Dimensions



Specifications

- 153mm x 18mm AC motor with reverse switch on fan body
- Stamped and spun steel construction
- 50" span, plywood blades
- Includes 4.5" and 12.5" down rods (longer options also available)
- Optional LED Light: 17W, 90 CRI, 3000K, 1600 lumens (dimmable) behind an opal glass diffuser; adds 3.5" to length of fan
- Slope compatible up to 33°; adapter available for slopes up to 45°
- Designed by Ron Rezek
- ETL listed for dry and damp locations
- Weight: 16 lbs (7.3 kgs)

Performance Data

LOWEST SPEED

RPM: 70
CFM: 1,615
Watts: 10.88
CFM/W: 148

HIGHEST SPEED

RPM: 190
CFM: 4,626
Watts: 60.85
CFM/W: 76

Energy Guide Data

Average Energy Use
38 Watts

Average Airflow
3,215 CFM

Yearly Energy Cost
\$11

Average Efficiency
84 CFM/Watt

Energy Guide Data represents weighted averages of low speed and high speed performance, assuming typical use (excluding light). For more information, visit www.modernfan.com.

Lapa

Gloss White with
Maple Blades
(no light)



Dark Bronze with
Mahogany Blades
(no light)



Galvanized with
Silver Blades and
552 LED Light



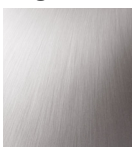
THE
MOD-
ERN
FAN
CO

FAN FINISHES

Gloss White



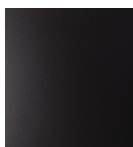
Bright Nickel



Galvanized



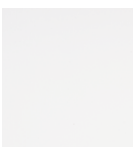
Dark Bronze



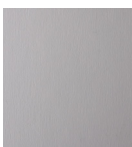
PLYWOOD BLADES

Plywood blades are constructed of furniture grade veneers, painted or stained as shown here. Natural variations may exist in woodgrains and finishes.

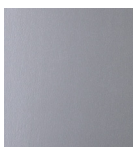
White



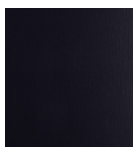
Nickel



Silver



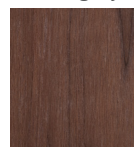
Black



Maple



Mahogany



LAPA FAN CONTROLS

Selection of a control option is made at time of order and incorporated into the fan item number (except #FC-009A and #FC-009B which are sold as accessory items).



#FC-001 Fan Speed Only Control (no light)

For a single AC fan, providing four speeds. Not intended for a fan with light.



#FC-002 Fan & Light Control—3 Wire

For a single AC fan with LED light, providing four speeds and dimming function. Requires three wires from switch location to fan.



#FC-003-LED Handheld Remote RF Control

Includes RF handset and receiver for a single AC fan or AC fan with LED light, providing three speeds and selectable light function (on/off or dimming). Includes universal or dedicated channel selection.



#FC-004-LED RF Fan & Light Control— 2 Wire

Includes RF wall control and receiver for a single AC fan or AC fan with LED light, providing three speeds and selectable light function (on/off or dimming). Includes universal or dedicated channel selection and master power switch.



#FC-005-LED Wall/Remote RF Control

Includes RF handset, RF wall control and receiver for a single AC fan or AC fan with LED light, providing three speeds and selectable light function (on/off or dimming). Includes universal or dedicated channel selection and master power switch.



#FC-009A / #FC-009B Multi-fan Speed Controls for AC Fans

(no lights)

Sold as an accessory item, providing three speeds for multiple fans on a single switch leg.

FC-009A for 2-3 fans
FC-009B for 3-6 fans

Note: Control of fan lights must be accounted for separately with owner provided control on separate switch leg.

DOWN RODS

The Lapa ships standard with 4.5" and 12.5" down rods. Use the following part numbers to order accessory down rods.

Finish		Length	
#DRD	-	-	-
▲		▲	
GW	Gloss White	12	12"
BN	Bright Nickel	24	24"
GV	Galvanized	36	36"
DB	Dark Bronze	48	48"
		60	60"
		72	72"

SLOPE ADAPTER

The Lapa will accommodate ceiling slopes up to 33 degrees. The #045 slope adapter can accommodate slopes exceeding 33 degrees and up to 45 degrees.

Finish	
#045	-
▲	
GW	Gloss White
BN	Bright Nickel
GV	Galvanized
DB	Dark Bronze