



Installation Instructions For Restoration Rosettes and Short Plates

Passage and Privacy

With step-by-step Installation Pictograms & Drilling Template



Applies to:

- Classic and Rope Rosettes
- Cottage and Studio Short Plates

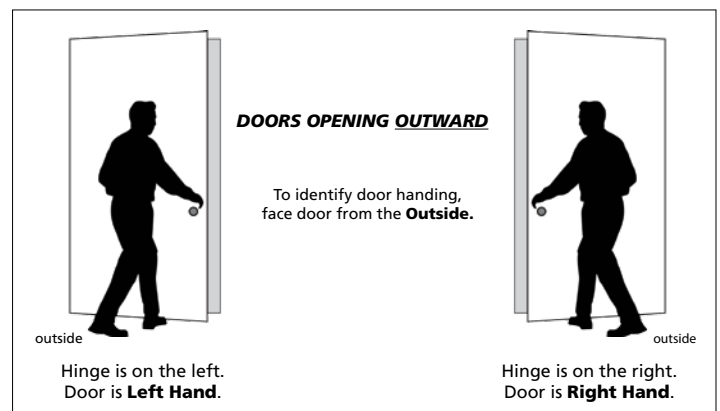
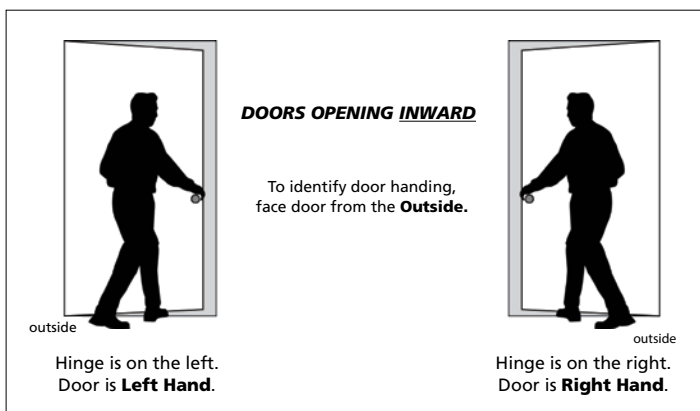
Tools Required: # 2 Phillips Screwdriver (Not power tools)

Door Handing - Rosettes and Short Plates

Door handing is critical for Split-Finish, or Split-Design products. It's also used to determine where the Interior and Exterior halves of the lockset are located on the door. And, it's used to position the latch tongue in relation to the strike plate.

Inside of Door - The **Inside** of a door refers to the side of the door that faces the room. For example, for a bedroom door on a hallway, the **Inside** of the door would face the bedroom.

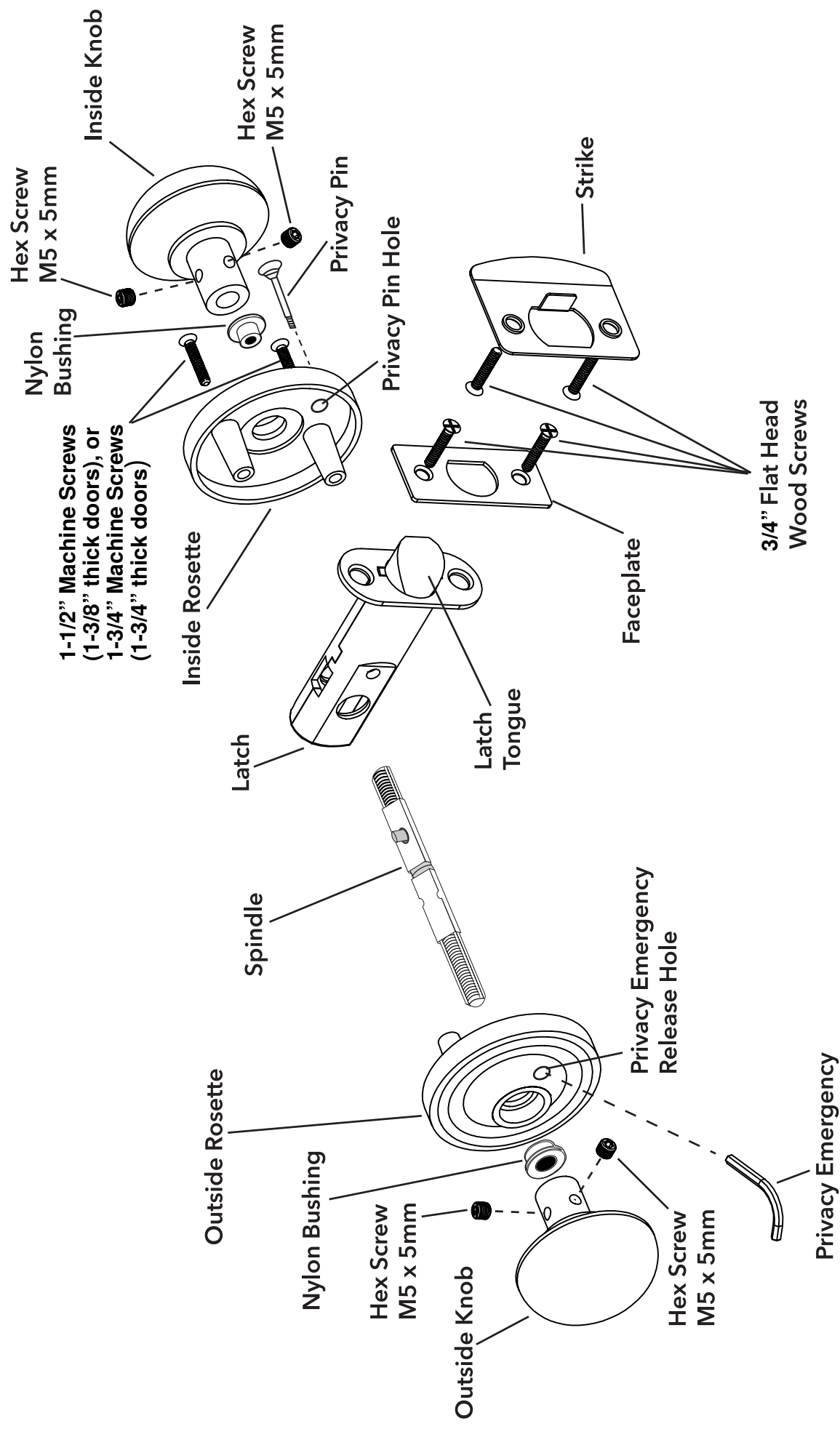
Outside of Door - The **Outside** of a door refers to the side of the door that faces away from the room. The **Outside** of a door is generally more visible to visitors, and therefore a rosette on this side of the door has no visible screws. For example, on a bedroom door, the **Outside** would face the hallway.



INSTALLATION RULES:

- 1) Lockset machine mounting screws are inserted from the inside.
- 2) Privacy pin holes are next to the door side containing the latch.
- 3) Latch tongues have a beveled side, and this side should contact the curved end of the face plate, and curved end of the strike plate.
(See ***Latch Tongue Note** on page 3.)

Exploded Drawing for Restoration Rosette & Short Plate Passage/Privacy



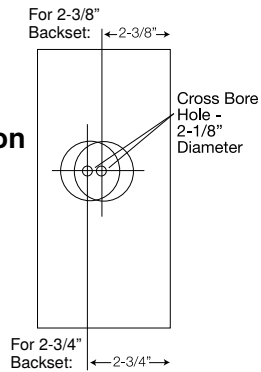
Installation Instructions For Restoration Rosettes and Short Plates

**Fits doors
1-3/8" to 1-3/4" thick**

Passage/Privacy

A

Backset Information

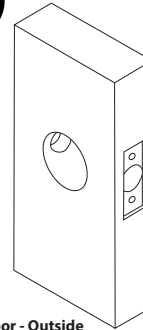


NOTE:

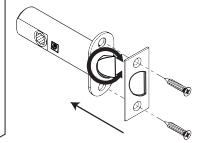
DRILLING
TEMPLATES ON
SEPARATE
INCLUDED
SHEET

B

Install Latch



- 1 Install latch and rotate the latch tongue * to change handing. (See page 1 for handing)
- 2 Install faceplate with 3/4" wood screws.

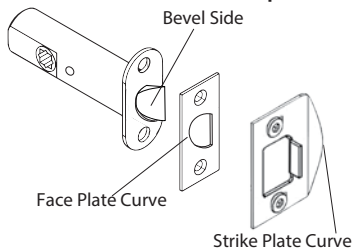


* See Latch Tongue Note in next panel

*

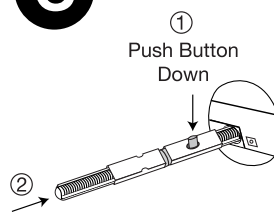
Latch Tongue Note

Bevel side of latch tongue should contact curved end of face plate, and curved end of strike plate.



C

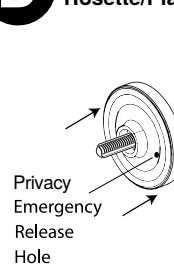
Insert Spindle



Door - outside

D

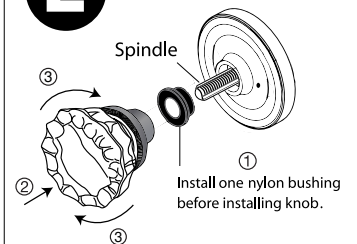
Install Exterior Rosette/Plate



Door - outside

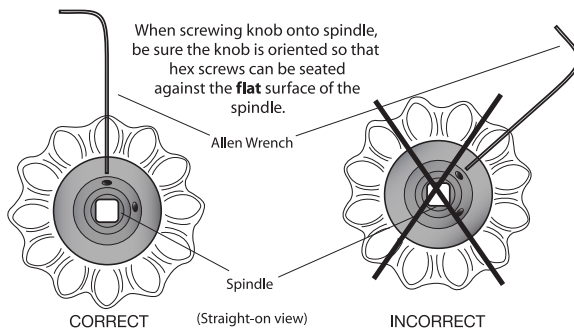
E

Install Bushing & Knob



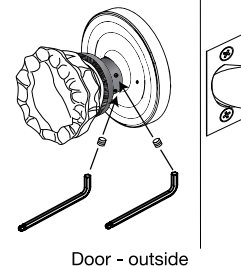
F

Tighten Hex Screws



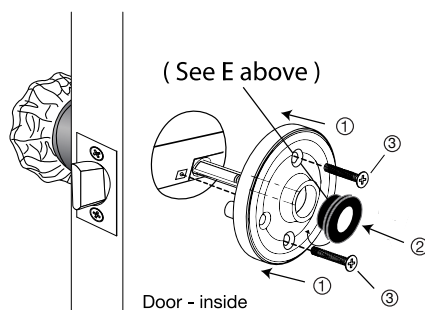
G

Insert both hex screws and tighten



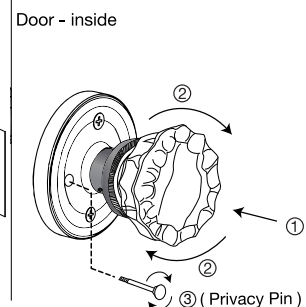
H

Install Interior Rosette/Plate, Bushing and Screws



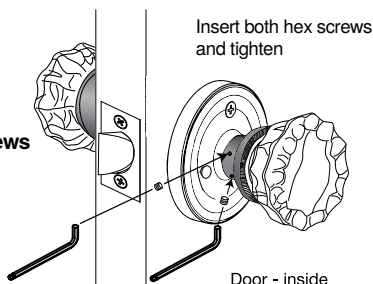
I

Install Knob



J

Tighten Hex Screws



NOTE:

If knobs do not turn freely; loosen one knob and rotate counter clockwise for 1/4 turn, then retighten the hex screws. Repeat if necessary.

Need help? Please Call us at

1-800-522-7336

Monday-Friday

7am-5pm Mountain Time

or visit

www.NostalgicWarehouse.com/support

DUMMY INSTALLATION AND DOOR PREPARATION TEMPLATE

