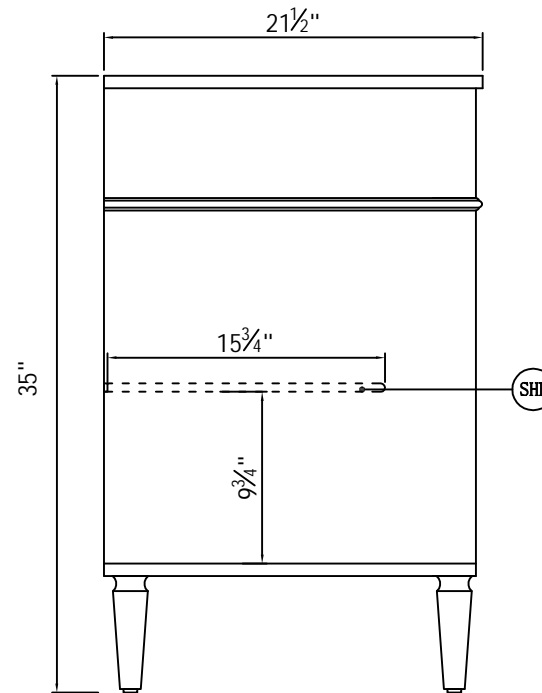
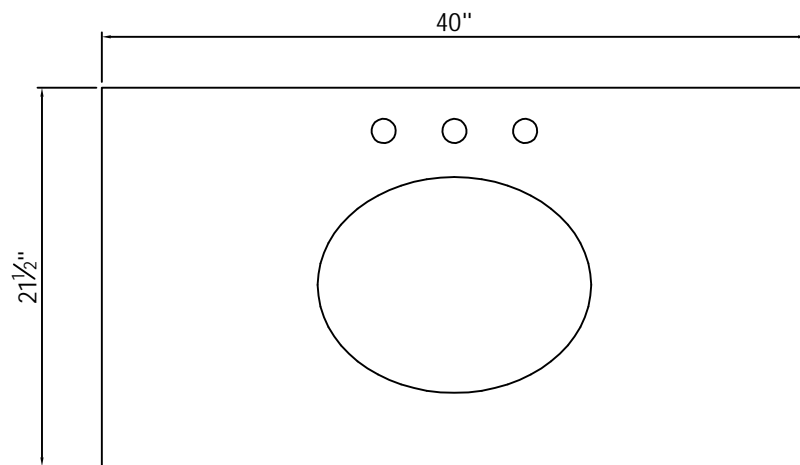


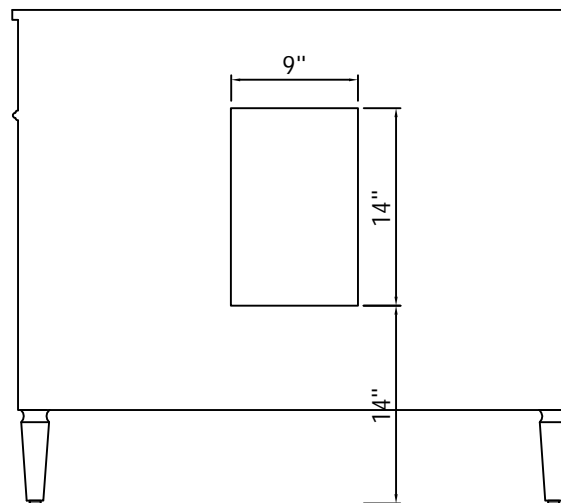
Front view



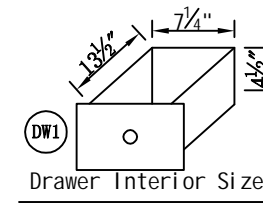
Side view



Top view



Back view



Drawer Interior Size

DWG. NO.

SPEC NO:

QUANTITY:

DATE:

CHECKED BY:

FOR PROPOSAL ONLY ALL
DIMENSIONS TO BE VERIFIED

PROJECT:

COLOR:

FINISH:

REVISIONS

1	
2	
3	
4	
5	
6	

Finish		Grey		Mirror type	N/A	Beveled glass	N/A	Frame material	Solid wood and MDF
Solid wood construction	Solid wood legs	Drawers Included	Yes	Number of Drawers	3	Joinery Type	SQUARE ENDED BUTT JOINT	Drawer railing	Metal
Drawer Length	9-1/2"	Drawer Width	14"	Drawer Height	6-1/2"	Shelves	Yes	Number of Shelves	1
Doors included	Yes	Number of Doors	2	Finished Back	Yes	Hardware finish	Brushed steel finish	Assembly	No
Countertop included	Yes	Countertop material	Marble	Number of Sinks accommodated	1	Sink material	Porcelain	Sink length	15.25
Sink width	12	Sink height	7	Sink hole size	1.75	Mounting type	Free-Standing	Backsplash	No
Backsplash length	N/A	Backsplash width	N/A	Backsplash height	N/A	Drain assembly included	No	Faucet included	No
Faucet type	No	Faucet hole size	1.5	Faucet hole spacing	8"3 Holes	Length/Diameter	40	Width	21.5
Height	35	Package LENGTH (inches)	45.25	Packaged WIDTH (inches)	26.88	Packaged Height (inches)	34.25	Package Weight (lbs)	194.04
Product Weight	154	Shipment Type	LTL	table top width	21.5"	table top finish	Carrara white	glass top tempered	N/A
table top maximum weight	66 LBS	Table: seating capacity	1	upholstery color	N/A	upholstery pattern	N/A	cushion material	N/A
base finish	Grey	powder coated finish	NO	base material	MDF	top material	Marble	wood species	Rubberwood
tip over restraint strap	NO	shape of top	Rectangle	lift top	NO	shelf material	MDF	adjustable shelves	NO
Drawer Handle designs & Door Knob Model	Knobs & KB102	saftey stop	Yes	felt lined drawers	NO	drawer glide extension	Full extension	drawer glide material	Metal
drawer dividers	NO	Drawer Interior finish	Grey	Ball Bearing Glides	NO	soft close drawer glides	YES	Number of cabinets	1
shelf height	9-3/4"	shelf width	23-1/4"	shelf depth	15-3/4"	Shelf thickness	1/2"	Any certification?	NO
California Proposition 65 warning required	YES	Drawers Interior Height	4-1/2"	Drawer Interior Width	7-1/4"	Drawer Interior Depth	13-1/2"	cabinet interior height	19-5/8"
cabinet interior width	23-1/4"	cabinet interior depth	18-7/8"	leg height	6-5/8"	leg width	2-1/8"	leg depth	2-1/8"
glass finish	N/A	stackable	NO	leg design	Straight legs	Armoires: ring slots	N/A	Armoires: hooks	N/A
armoires: mirror dimensions	N/A	door thickness	7/8"	false drawers?	NO	sink type	Undermount	# of faucet holes	3

DWG. NO.

SPEC NO:

QUANTITY:

DATE:

CHECKED BY:

FOR PROPOSAL ONLY ALL DIMENSIONS TO BE VERIFIED

PROJECT:

COLOR:

FINISH:

REVISIONS

1	
2	
3	
4	
5	
6	