

# Pendant fixture

## Installation Instructions

cerno®

### General Product information

This product is suitable for indoor dry locations only.

This product can be dimmed with an electronic low voltage (ELV) dimmer. Please see "Dimmer Compatibility" section of these instructions for more information.

#### CAUTION - RISK OF FIRE

This product requires installation by a qualified electrician. Before installing be sure to read all instructions and **TURN POWER OFF TO THE JUNCTION BOX**

### Adjusting the Fixture Height

- 1 Measure the desired height (H) that you want the fixture to hang below the ceiling.
- 2 Thread the cable through the shade, canopy fastener, canopy, crossbar, and washer. (See Figure 2)
- 3 Tie a knot in the cable at the desired length H

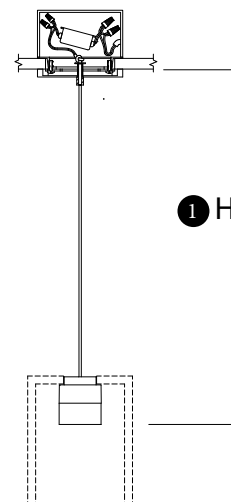


Figure 1

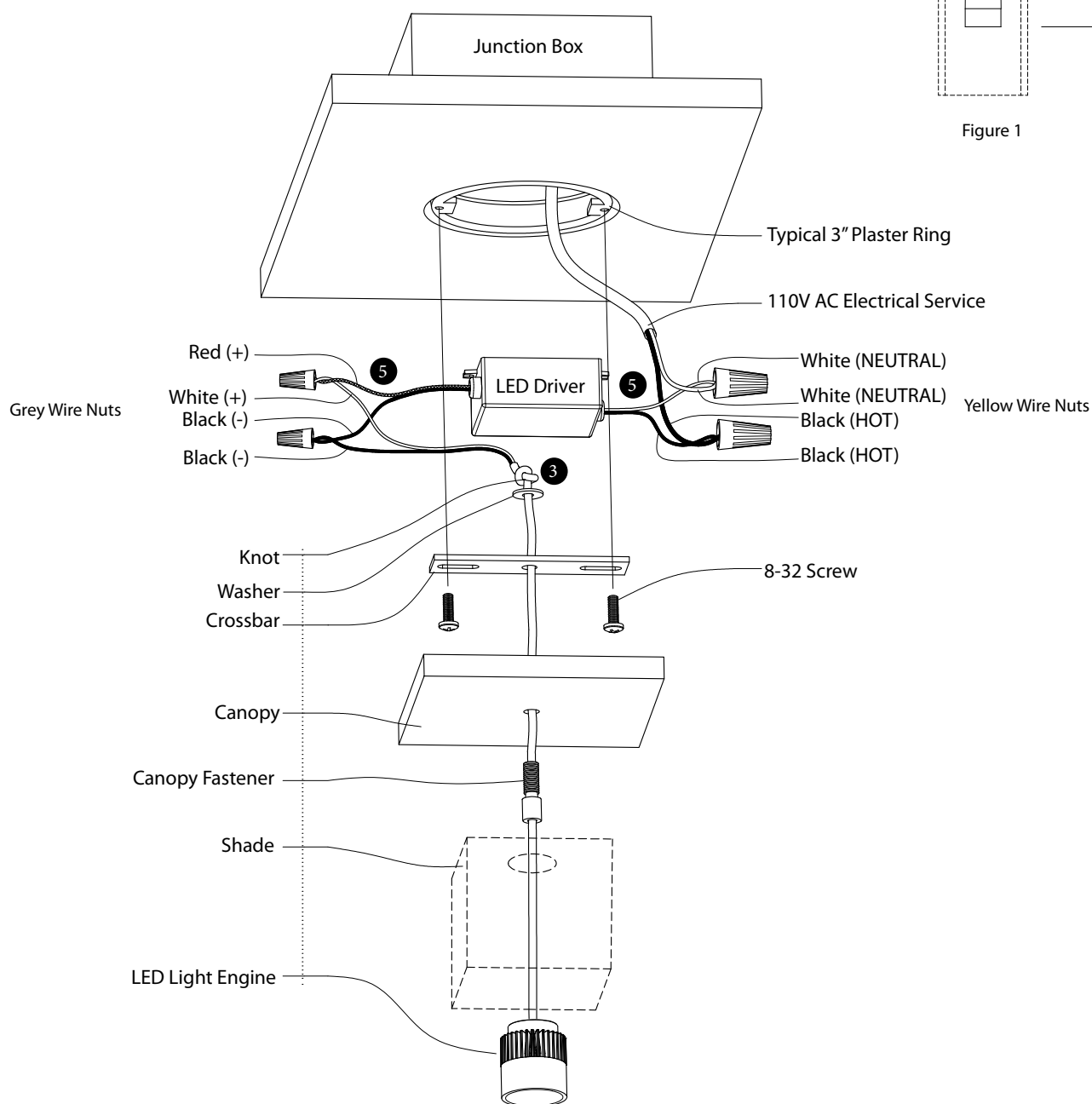


Figure 2

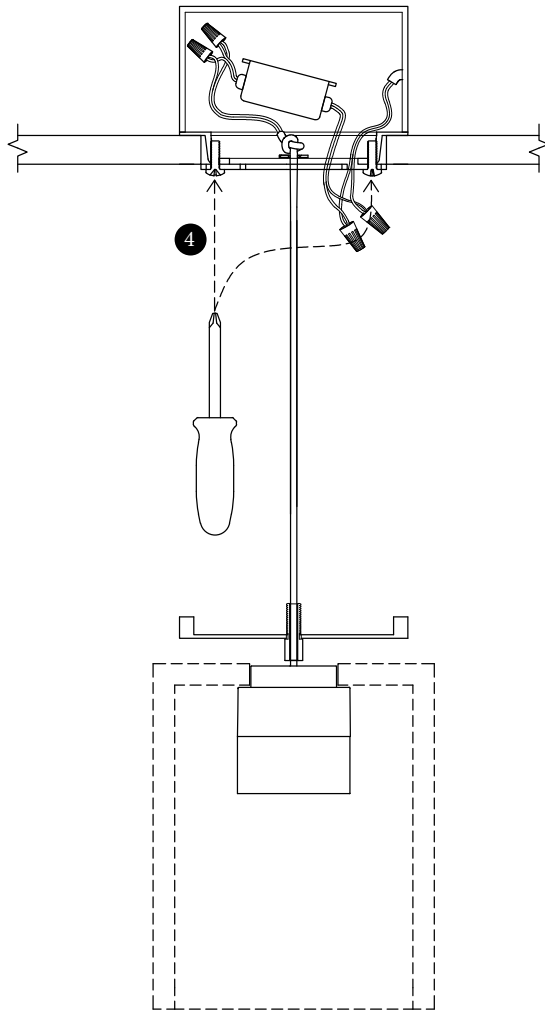


Figure 3

### Securing the Canopy

- ⑥ After electrical connections have been made, place led driver and all of the wires inside of the junction box.
- ⑦ Slide the canopy up the cable and secure it by screwing the canopy fastener into the crossbar.

### Dimmer Compatibility

The following dimmers are compatible with cerno LED pendants:

- Lutron Maestro®: MAELV-600 (or similar)
- Lutron Diva®: DVELV-300P (or similar)
- Lutron Radio-RA® : RAEV-500L

Other electronic low voltage Dimmers may be compatible, but have not been tested to assure quality results.

Do not use Leading Edge (Typically labeled "incandescent") or magnetic or fluorescent Dimmers.

All power ratings and installation instructions from dimmer manufacturers' instruction sheets must be followed.

Dimmer must have same AC input rating as the dimmable power supply driver it connects to.

### Mounting the Fixture

- ④ Attach the crossbar to the junction box using the supplied 8-32 screws.

### Making Electrical Connections

- ⑤ Make electrical connections as shown in figure 2 using the supplied wire nuts.

WARNING - THE LED DRIVER IS A DC DEVICE AND MUST BE ATTACHED TO THE LED LIGHT ENGINE AS SHOWN. CONNECTING THIS DEVICE INCORRECTLY WILL CAUSE SEVERE DAMAGE.

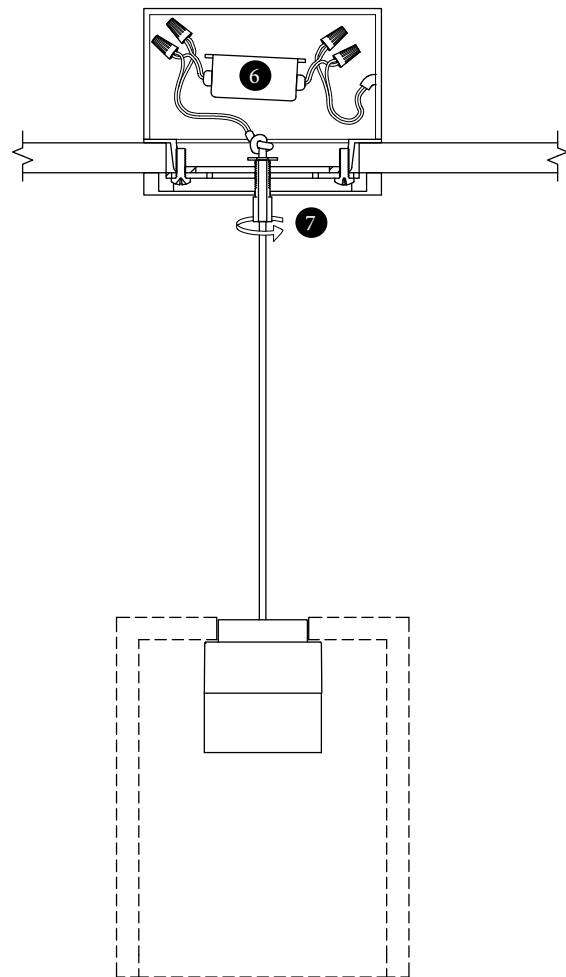


Figure 4