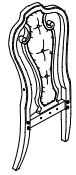



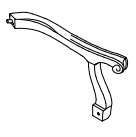


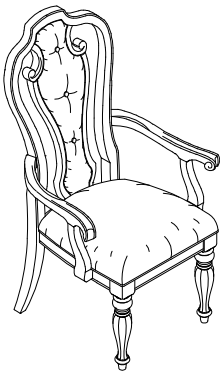
ASSEMBLY INSTRUCTION

DESCRIPTION: SPLAT BACK ARM CHAIR





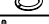

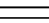
Thank you for purchasing this quality product. Be sure to check all packing material carefully for small parts which may have come loose inside the carton during shipment. Identify and count all parts and compare with the parts List Below:

PART LIST:

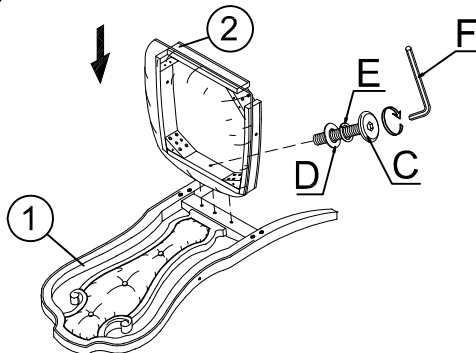
①	②	③	④	⑤
				
BACK FRAME:1PC	SEAT CUSHION+FRAME:1PC	FRONT LEG:2PCS	LEFT ARM CHAIR:1PC	RIGHT ARM CHAIR:1PC



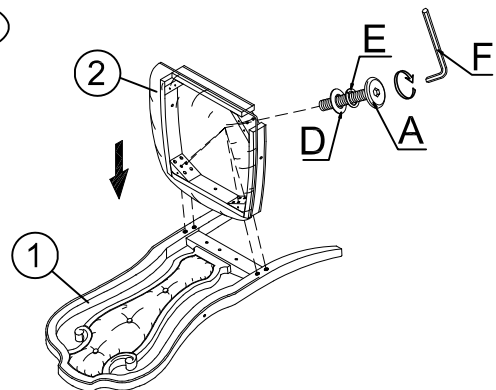
HARDWARE LIST

NO.	Drawing	Description	Q'ty
A		Bolt (Φ5/16"×3-1/4")	4pcs
B		Bolt (Φ5/16"×2-1/2")	4pcs
C		Bolt (Φ5/16"×1-3/4")	3pcs
D		Flat washer (Ø5/16"×19mm)	11pcs
E		Spring washer (Ø5/16")	11pcs
F		Allen wrench (5mm)	1pc
G		Screw (Φ8×1-1/2")	2pcs

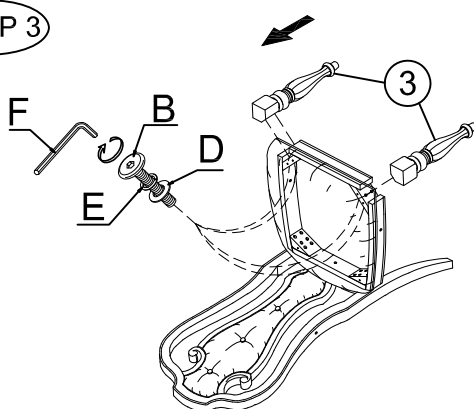
STEP 1



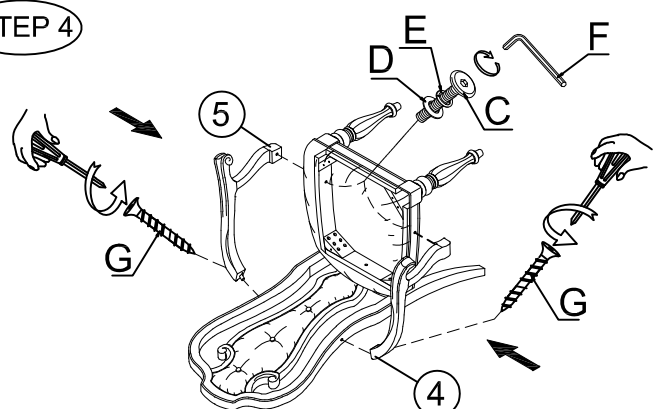
STEP 2



STEP 3



STEP 4



CLEANING INSTRUCTION

Clean the Splat Back Arm Chair surface with a furniture polish and a soft cloth.