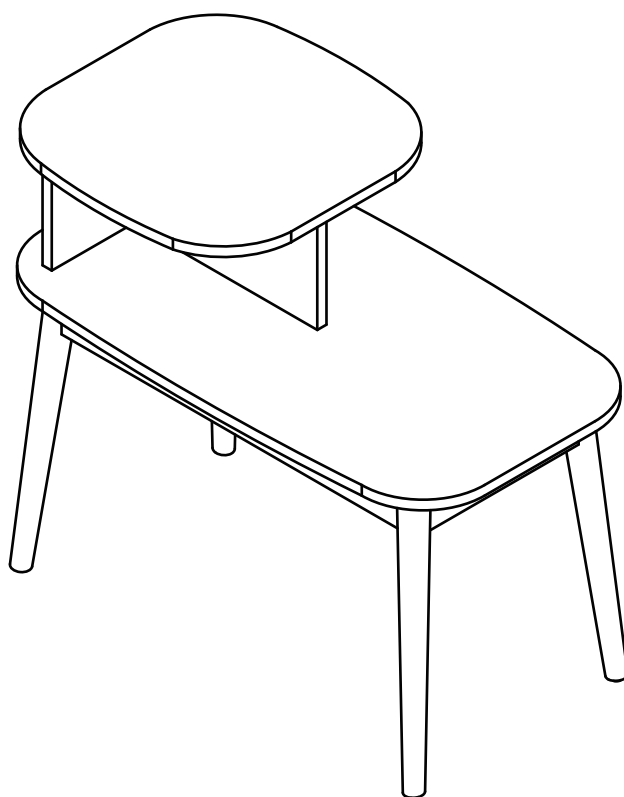


END TABLE







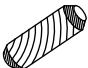
ASSEMBLY INSTRUCTIONS

We have designed our furniture with you , the customer in mind . Our clear , easy to follow , step by step instructions will guide you through the project from start to finish . Feel confident that this will be a fun and rewarding project . The final product will be a quality piece of furniture that will go together smoothly and give years of enjoyment .

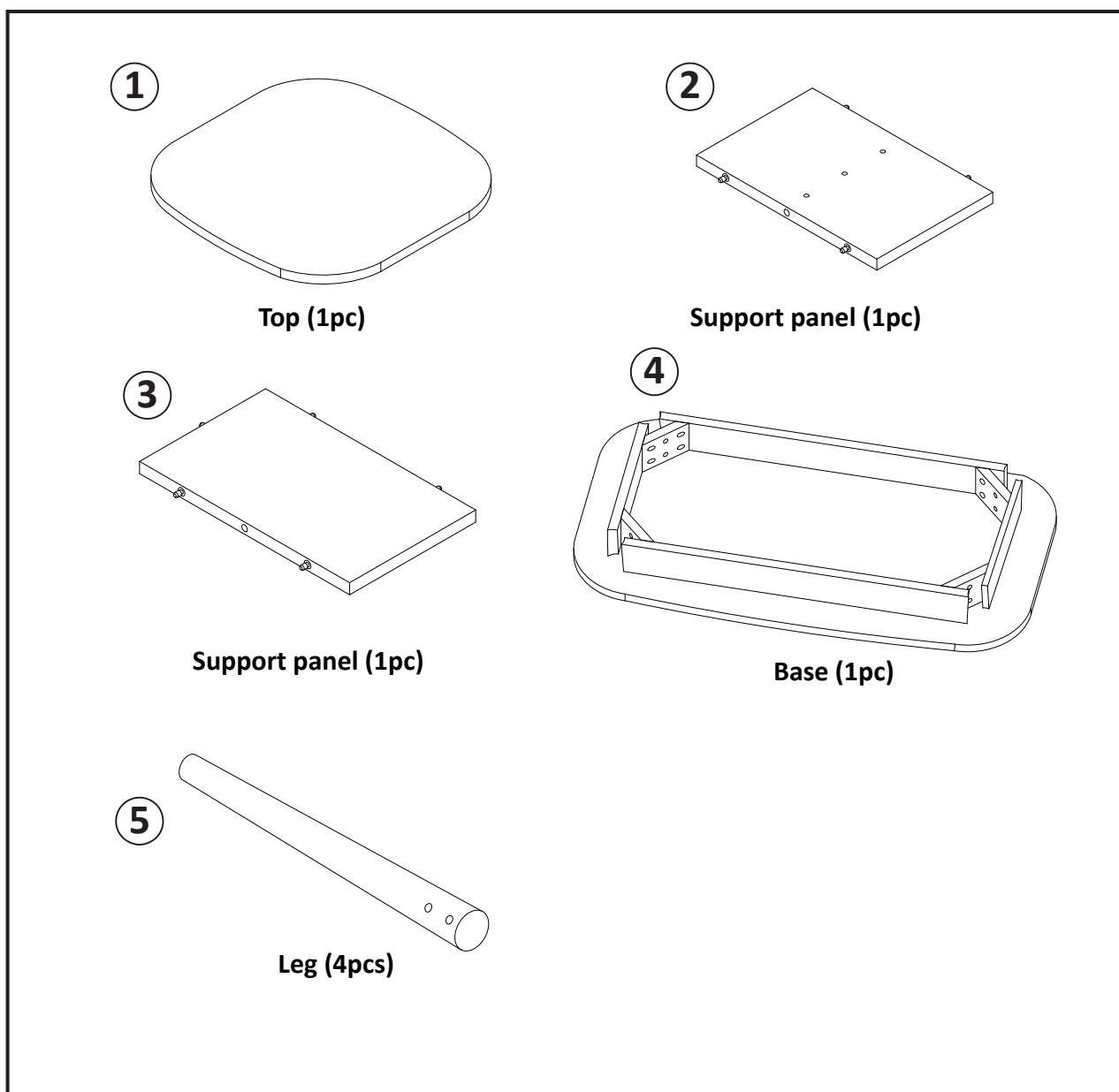


Please do not return to the store
Broken or missing parts?
Need help with assembly?

Hardware List

A 	B 	C 
Bolt (8pcs)	Lock washer (8pcs)	Flat washer (8pcs)
D 	E 	
Allen wrench (1pc)	Wood dowel (8pcs)	

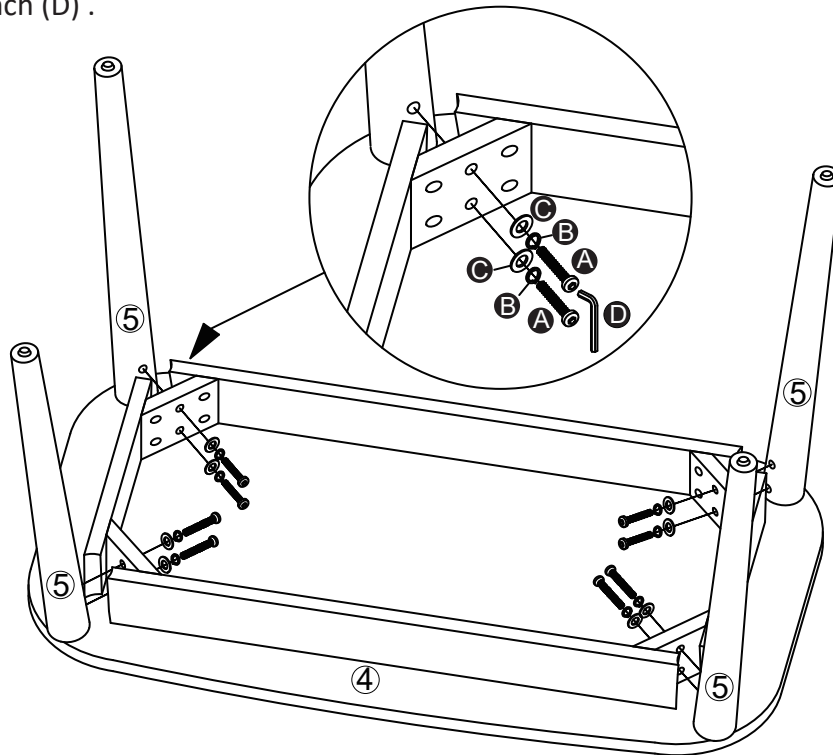
Panel List



Step 1

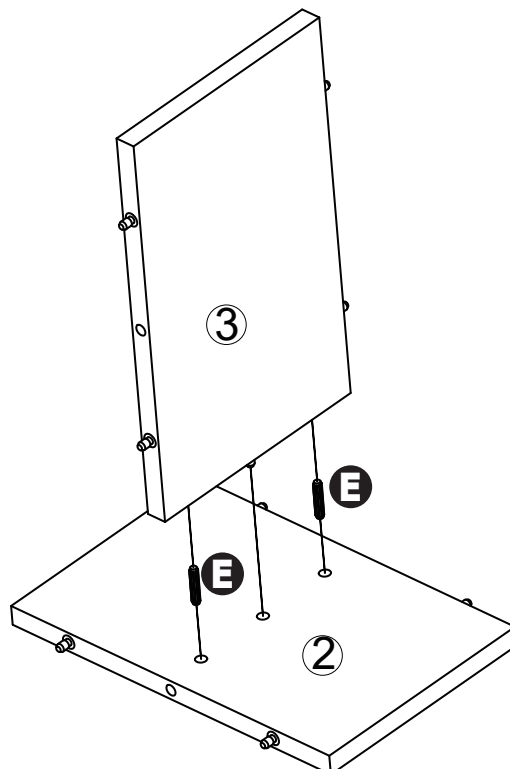
*Place base ① upside down on carpet or other soft surface.

1. Connect legs ⑤ to base ④ as shown using bolts (A) ,lock washers (B),flat washers (C) and allen wrench (D) .



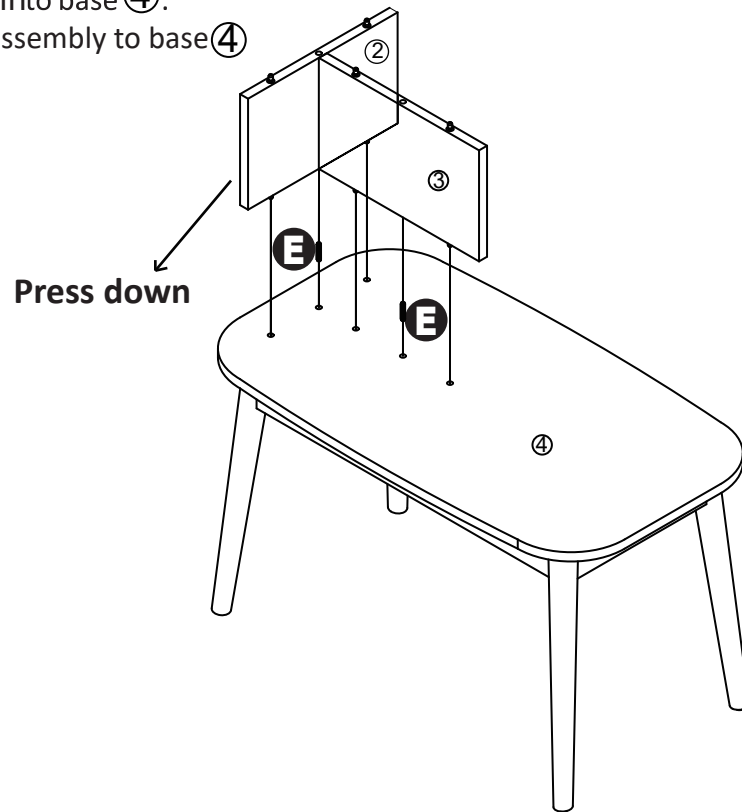
Step 2

1. Insert wood dowels (E) into support panel ② .
2. Connect support panel ③ to support panel ② as shown .



Step 3

1. Insert wood dowels (E) into base ④.
 2. Connect Support Panel assembly to base ④ as shown.
- as shown .



Step 4

1. Insert wood dowels (E) into Support Panel ② and ③.
2. Connect top ① to unit as shown.
3. Enjoy.

