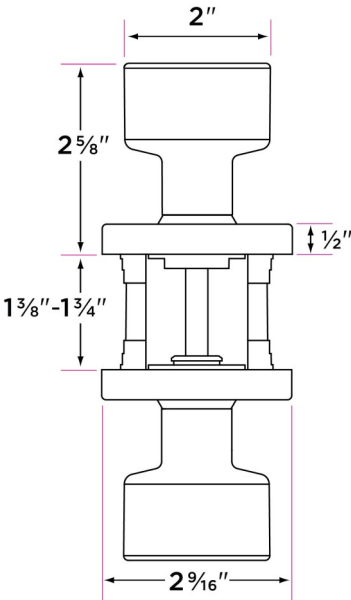


# Knob - Square



DESCRIPTION

CASE

Passage (hall/closet) Both sides always free	24
Privacy (bed/bath) Locked by finger turn. Unlocked by finger turn or coin slot from the outside	24
Entry-Locked/unlocked by inside finger turn or outside key	24
Dummy (closet) Inactive, single-sided, flush mount with two wood screws	24
Handleset Interior Trim	24

## Finishes

- 32D Stainless Steel
- 26 Polished Chrome
- 11P Vintage Bronze
- FBL Flat Black

## Door Handing

Non-handed

## Door Thickness

1 3/8" to 1 3/4"

## Key Cylinder

- 5 Pin KW1
- 5 Pin SC1 option

## Strike Plate

2 1/4" x 1 3/4" full-lip radius corner standard

## Latch

- 2 1/4" x 1" radius corner faceplate
- 4 in 1 latch with collar for drive-in function
- Adjustable 2 3/8" or 2 3/4"
- 1/2" throw bolt

## Door Prep

- Crossbore 2 1/8"
- Edgebore 1"

## Materials

- Formed Brass
- All metal components