

## BENCH OTTOMAN



### ASSEMBLY INSTRUCTIONS

---

We have designed our furniture with you , the customer in mind . Our clear , easy to follow , step by step instructions will guide you through the project from start to finish . Feel confident that this will be a fun and rewarding project . The final product will be a quality piece of furniture that will go together smoothly and give years of enjoyment .

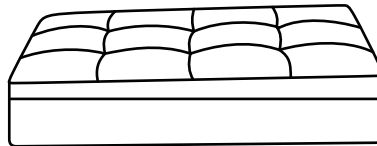
---

### Hardware Identification

For ease of identification all hardware is organized into separate Hardware Packs for each Step in the Instruction Manual.

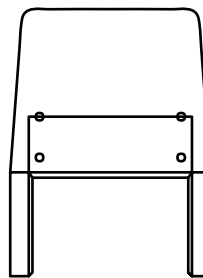
**① x 1**

OTTOMAN  
BENCH



**② x 2**

SIDE  
ASSEMBLY



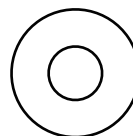
**A x 8**

ALLEN BOLTS



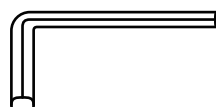
**B x 8**

WASHERS

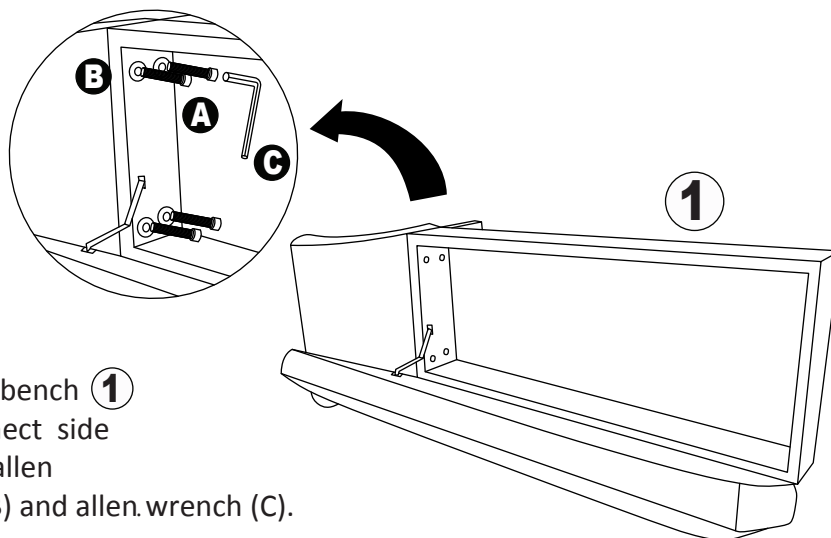


**C x 1**

ALLEN WRENCH

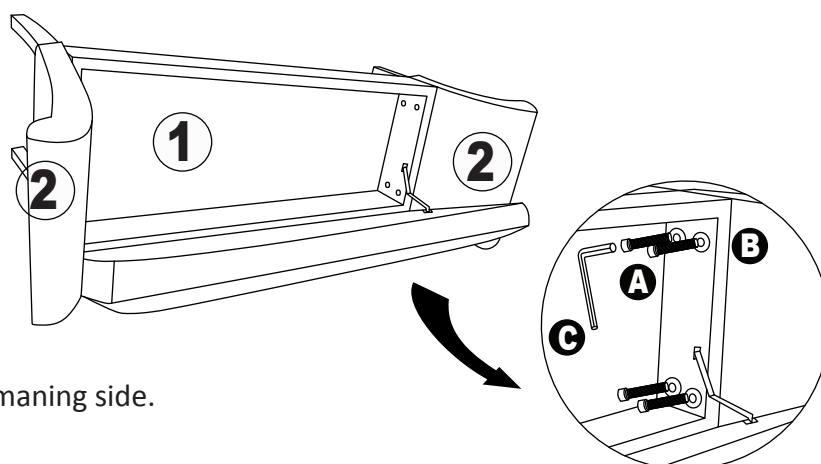


## Step 1



Gently lay ottoman bench ① on its side and connect side assembly ② using allen bolts(A), washers (B) and allen.wrench (C).

## Step 2



Repeat step1 for remaning side.

## Step 3

Enjoy!

