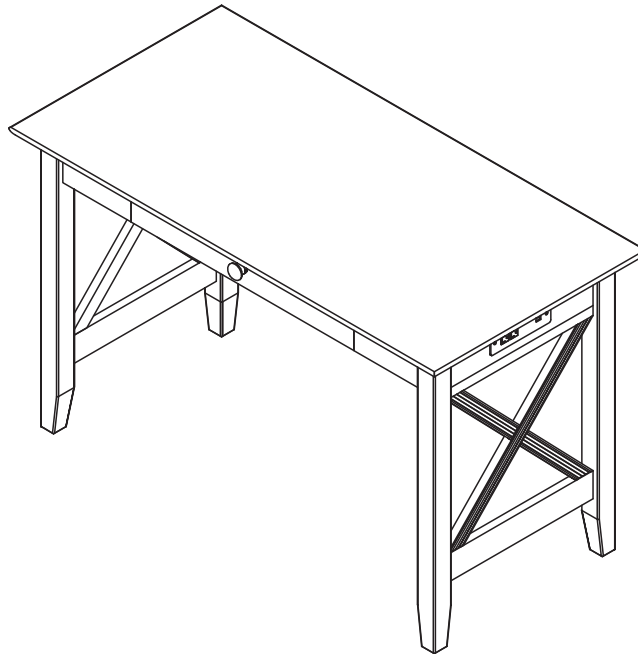
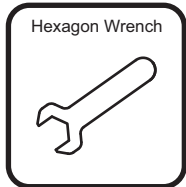


DESK WITH DRAWER CHARGING STATION

ASSEMBLY INSTRUCTIONS

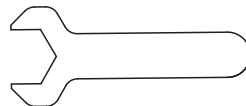
Before assembling your Desk, please read through these instructions carefully and familiarize yourself with the different parts.



NOTE: WE INCLUDE SPARE HARDWARE IN CASE THE HEXAGON NUT, WASHER, WOODEN DOWEL, OR WOOD SCREW ARE DAMAGED DURING ASSEMBLY.

- A** Flat washer - 8 pcs
Spare - 2 pcs

- B** Hexagon nut - 8 pcs
Spare - 2 pcs



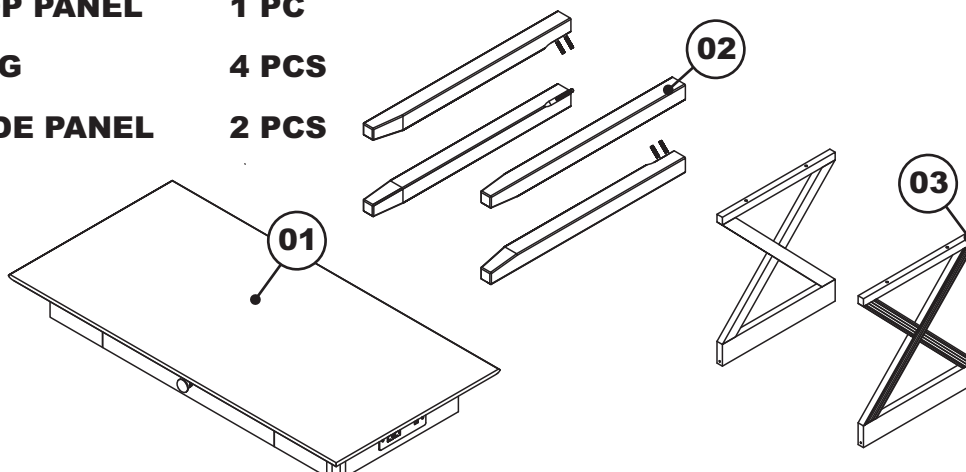
- C** Hexagon wrench - 1 pc

- D** Wooden Dowel - 4 pcs
Spare - 1 pc

- E** Wood Screw - 4 pcs
Spare - 1 pc

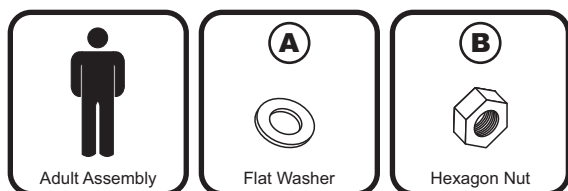
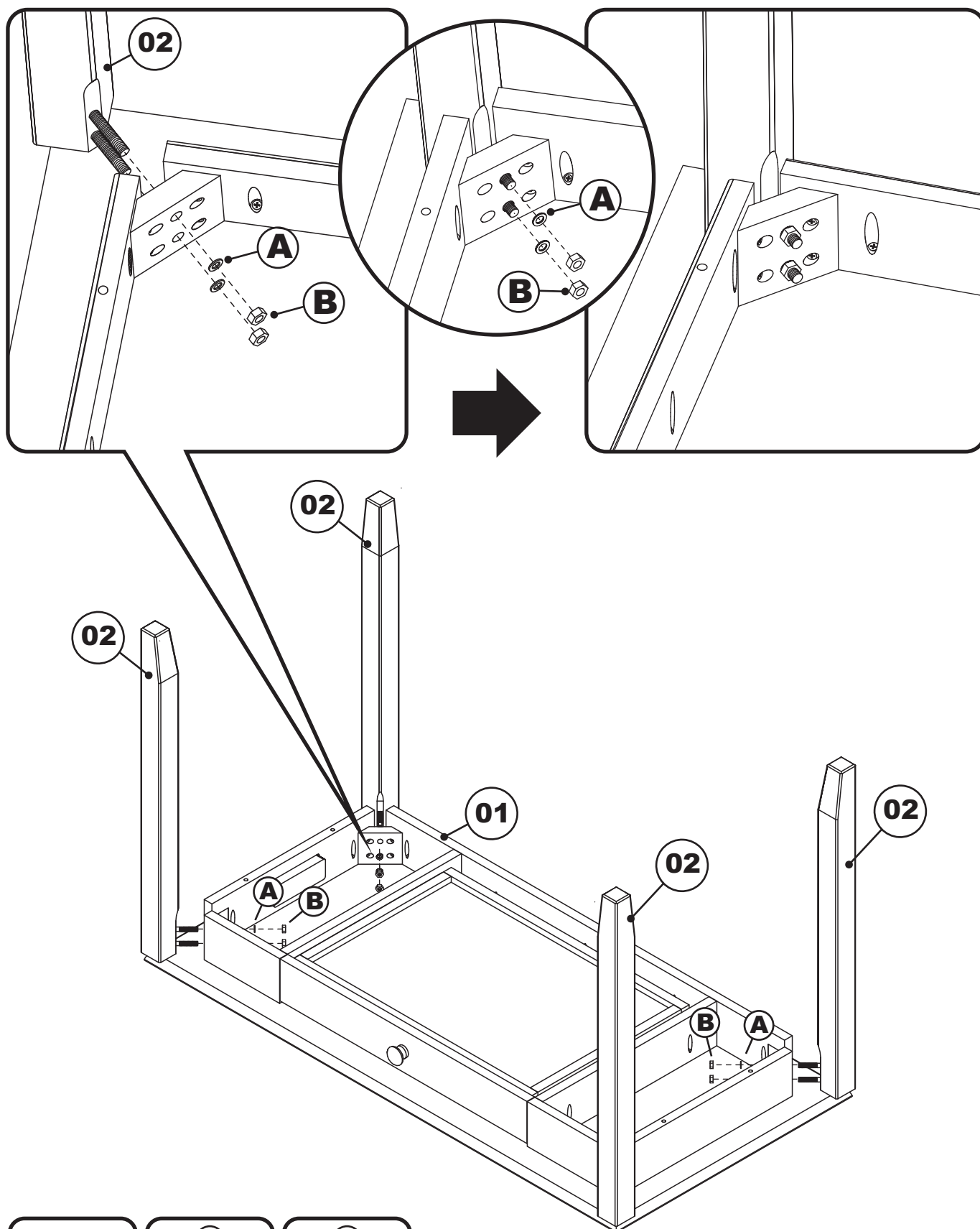
PARTS LIST

- 01** TOP PANEL 1 PC
02 LEG 4 PCS
03 SIDE PANEL 2 PCS



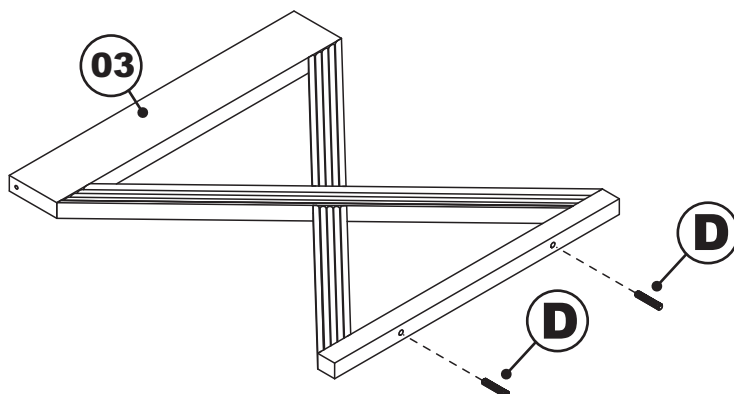
STEP 1

Attach the legs (02) to the top panel (01) using flat washers (A) and hexagon nuts (B), tighten with hexagon wrench (C), as shown below.

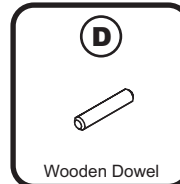


STEP 2

Install wooden dowels (D) into the locator holes on (03) as shown below. Repeat with the other panel.



Adult Assembly



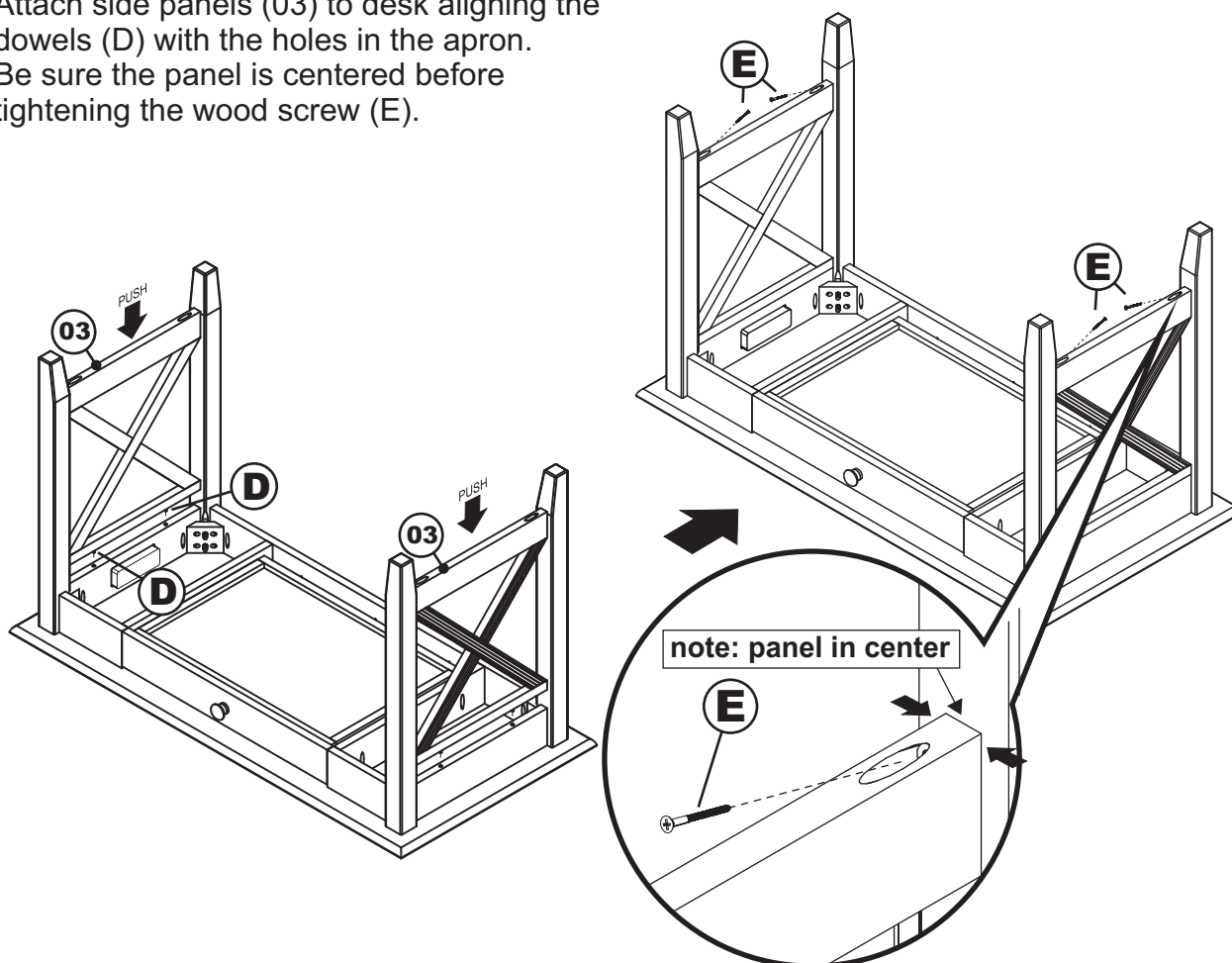
Wooden Dowel



Wood Screw

STEP 3

Attach side panels (03) to desk aligning the dowels (D) with the holes in the apron. Be sure the panel is centered before tightening the wood screw (E).

**Congratulations!**

Your Desk is now ready for use.

To ensure lasting safety, we recommend that you periodically check that all screws are tight and all parts are secure.