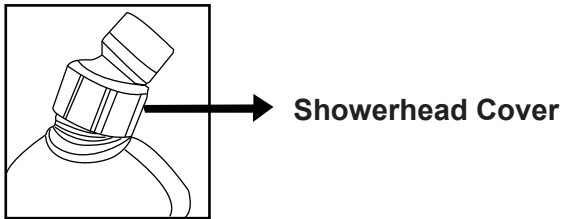


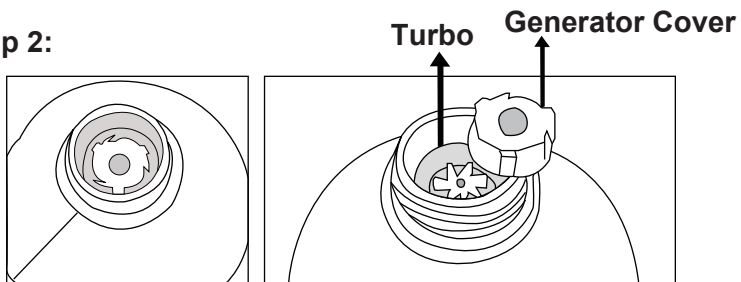
How to self-clean when the LED does not light up well? (For Showerhead)

Step 1:



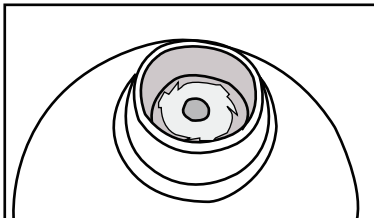
Remove the Showerhead Cover by turning it counter-clockwise.

Step 2:



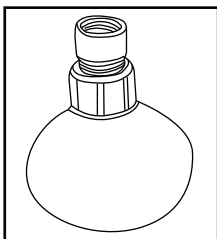
Remove the Generator Cover. Clean the Turbo and turn the Turbo a couple turns.

Step 3:



Put the Generator Cover back.

Step 4:



Put the Showerhead Cover back.