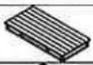





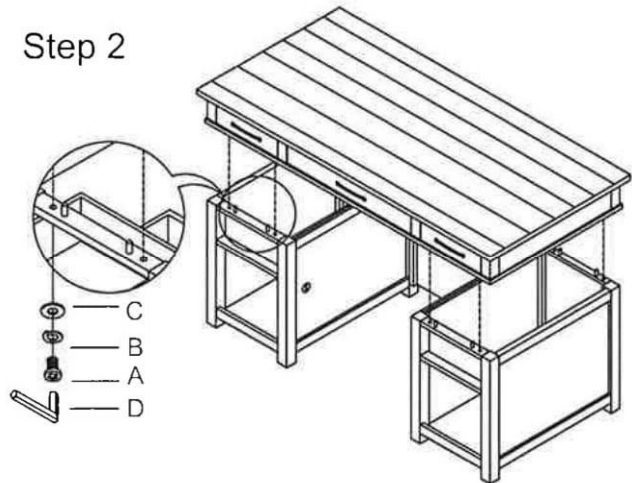
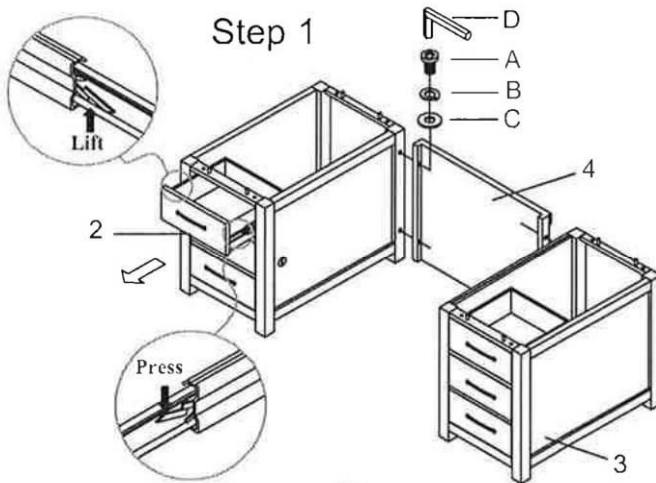
ASSEMBLY INSTRUCTION

DESCRIPTION Desk / Credenza Base and Top

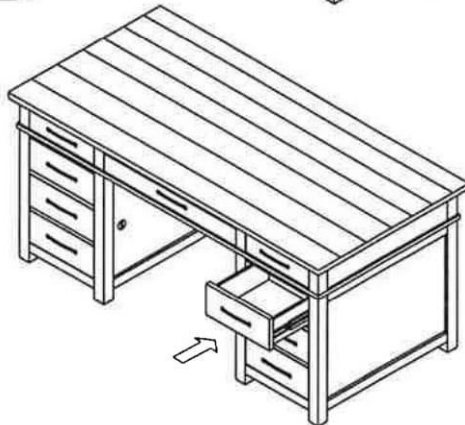
Thank you for purchasing this quality product. Be sure to check all packing material carefully for small parts which may have come loose inside the carton during shipment. Identify and count all parts and compare with the parts list below:

Component List			
NO.	Descriptions		Qty.
1	Credenza Top		1
2	Credenza Base-Left		1
3	Credenza Base-Right		1
4	Center Back Panel		1

5			
Hardware List			
NO.	Descriptions		Qty.
A	Bolt 1/4" x 1-1/2"		12
B	Spring Washer 1/4"		12
C	Flat Washer 1/4" x 16mm		12
D	Allen Key 4mm		1



Step 3



ASSEMBLY TIPS:

1. Remove hardware from box and sort by size.
2. Please check to see that all hardware and parts are present prior start of assembly.
3. Please follow attached instructions in the same sequence as numbered to assure fast and easy assembly.



⚠ WARNING!

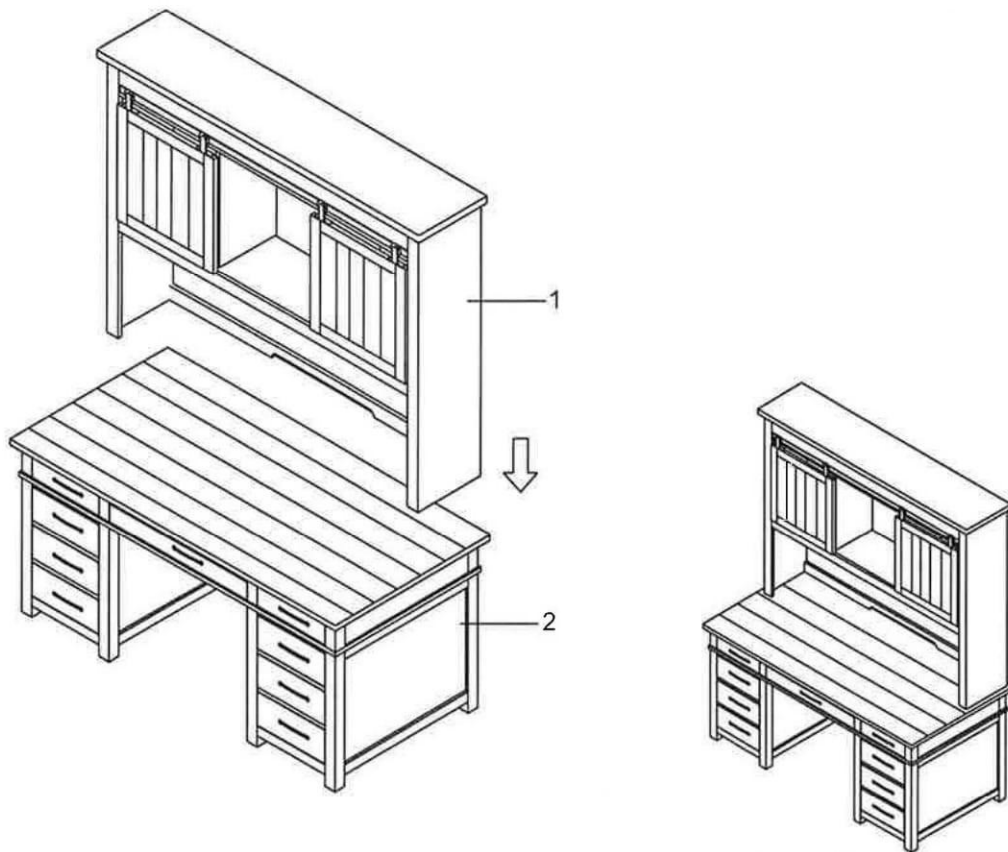
1. Don't attempt to repair or modify parts that are broken or defective. Please contact the store immediately.
2. This product is for home use only and not intended for commercial establishments.

ASSEMBLY INSTRUCTION

DESCRIPTION Credenza Hutch
Desk / Credenza

Thank you for purchasing this quality product. Be sure to check all packing material carefully for small parts which may have come loose inside the carton during shipment. Identify and count all parts and compare with the parts list below:

Component List			
NO.	Descriptions		Qty.
1	credenza hutch		1
2	Desk / Credenza		1



Bench

ASSEMBLY TIPS:

- 1.Remove hardware from box and sort by size.
- 2.Please check to see that all hardware and parts are present prior start of assembly.
- 3.Please follow attached instructions in the same sequence as numbered to assure fast and easy assembly.

⚠ WARNING!

1. Don't attempt to repair or modify parts that are broken or defective. Please contact the store immediately.
2. This product is for home use only and not intended for commercial establishments.