

# Manual and Operating Instruction

## FOR YOUR SAFETY

Read all warnings and operating instructions before use and retain for future reference.



### 2-Burner Outdoor Propane Stove With CART

Model: 95537(FH-AMP7841)

- **58,000 BTU**
- The pot support area is made with Iron that has been finished with a high heat resistant coating. We use an open cruciform shape in order to keep a secure foundation while still allowing the most heat transmission to your cooking surface.
- Temperature controlling knobs
- CSA certified regulator
- For use with stainless steel griddle or similar products
- Comes with drop down side tables to make it more compact



## ✂ Instructions

### ① INSTALL PREPARATION

Step 1: Follow "ASSEMBLY INSTRUCTION" to install burner and assemble unit.

Step 2: Place stove on a level and stable surface.

Step 3: Make sure there is propane in the tank and it is turned **OFF**, connect propane tank and stove with regulator and hose.

Step 4: Make sure air damper can move (Picture 1).

### ② GAS LEAK TESTING

Step 1: Slowly open propane tank valve and check for leaks by applying small amount of liquid soap and look for bubbles. If you smell gas, **TURN OFF** propane valve immediately.

Step 2: Detach and reconnect the regulator on tank and test it again, if leaking continues, please stop using and contact retailer/distributor for help. (Picture2)

Step 3: If no gas is detected, please follow Part Three OPERATION.

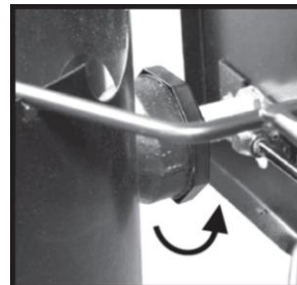
### ③ OPERATION

Step 1: Lock the wheels to prevent it from moving. (Picture 3).

Step 2: Hold a fire lighter near the burner. (Picture 4)

Step 3: Start with the minimum fire and slowly adjust the air damper up and down (Picture 1) until burner has blue flame, some yellow tips on the flame is normal.

Step 4: Place stainless steel plancha/griddle, comal or caso on top of cooking surface to cook meat/tacos, toast tortillas or to heat and cook a wide variety of your favorite foods.,



Picture 1



Picture 2



Picture 3



Picture 4



# WARNING



- Not for use in home or any other enclosed area including a garage. Only for open air/space use.
- Never use a stove of any kind to heat your home.
- Keep any spare propane tanks AWAY from this or any other heat source.
- For use with a 20lb Propane Tank only, not for use with natural gas or other gas source. Any alterations may cause severe injury or even death.
- Check with your local fire safety department if you have any questions on safe usage.
- If you ever smell gas immediately shut off gas to the appliance, put out any flame and re test for gas leak per STEP 2 under Instructions.
- Not for use by children, please watch if children are present as the surfaces can become very hot on all sides. DO NOT TOUCH any hot surfaces or where heat may be present.
- Never attempt to move the grill while it is lit. Turn off and disconnect propane prior to moving grill. Failure to do so may cause a leak in the connections and could easily cause a fire or explosion with future use.
- DISCONTINUE USE IF THERE IS ANY SIGNS OF DAMAGE OR WEARING THAT MAY BE UNSAFE, including but not limited to wearing on the regulator or hose, wearing or damage to plate support, damage or loose wheels/base.
- Inspect and test folding tables on the side to make sure they are locked in place and secure prior to putting weight on them.
- Never put more than 10 pounds on the side table. This is not a seat or resting area, never sit on the side tables.
- NEVER Leave the grill unattended while in use.



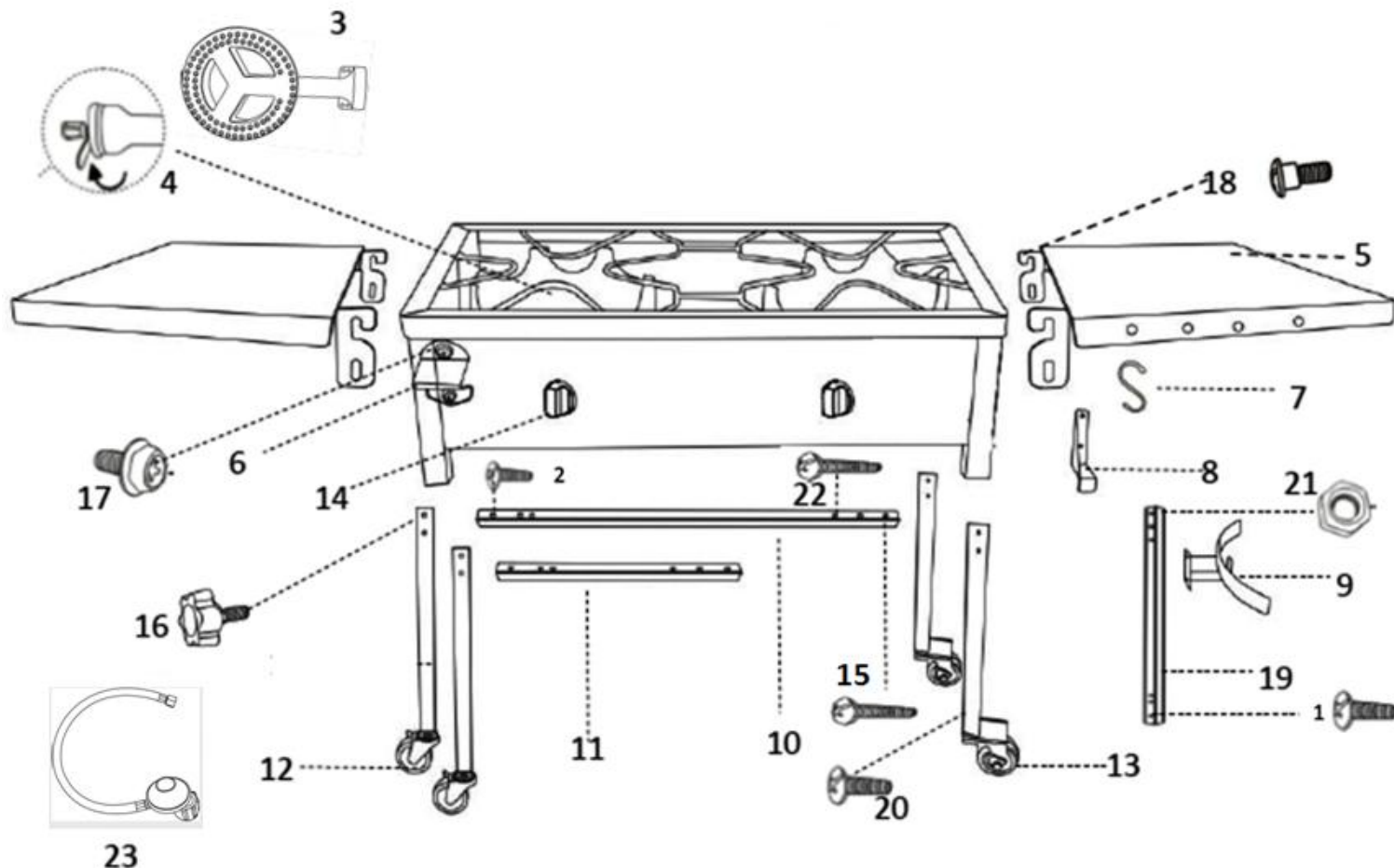
## CARBON MONOXIDE HAZARD



**Never use this product in an enclosed space.**

**This appliance can produce carbon monoxide which has no odor. It may seriously danger you or others, including property.**

# 95537(FH-AMP7841) PARTS LIST



## Tools Needed for Assembly (Not included)

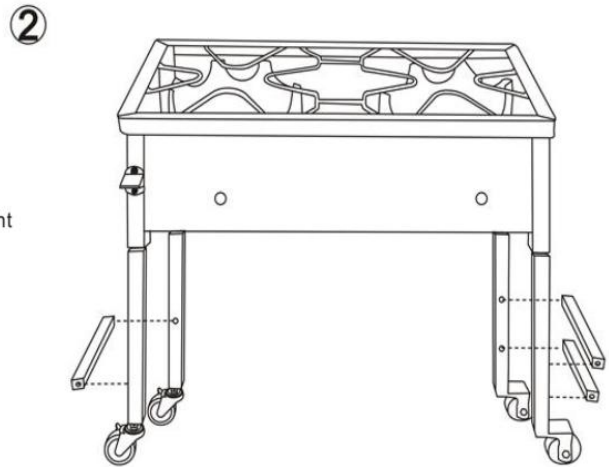
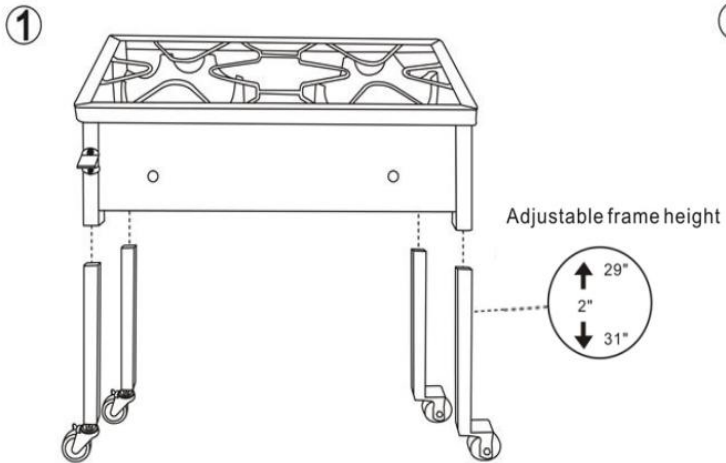
- ✓ Screwdriver
- ✓ Adjustable Wrench (or 10mm wrench)
- ✓ Ignition lighter



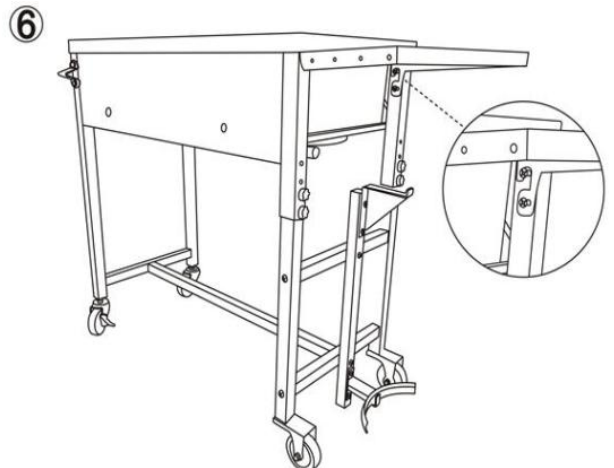
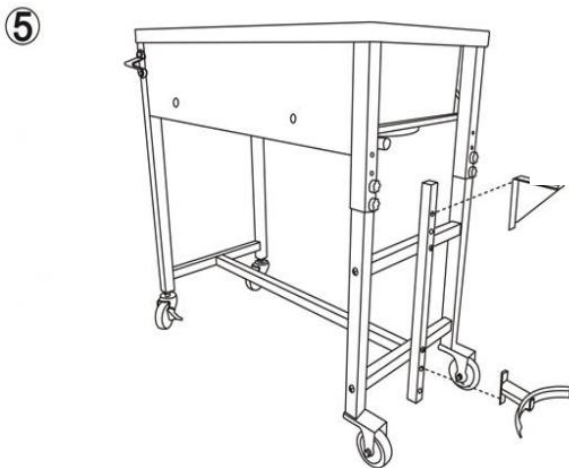
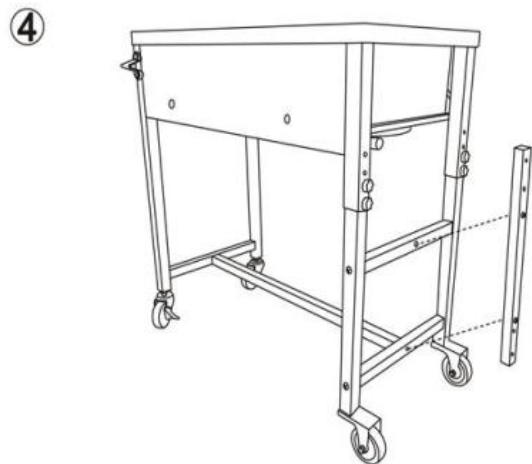
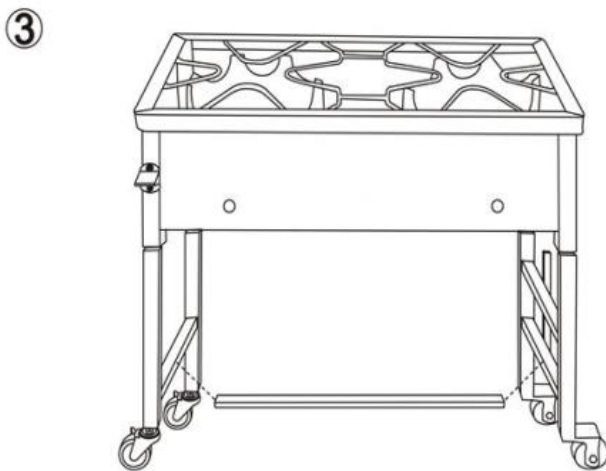
No.	Assembly Name	Product No.	QTY
1	Screw(6*40mm)	S640	4
2	Screw(6*45mm)	S645	1
3	Burner	BA71	2
4	Air damper	W7841	2
5	Foldable table	AC3338	2
6	Bottle opener	D12	1
7	Hook	D13	4
8	Triangle hook for gas tank	D10	1
9	Propane holder	D14	1
10	Leg spacer(71*2.5*2.5cm)	L71	1
11	Leg spacer (32.5*2.5*2.5cm)	L325	3
12	Leg with Wheel with lock	W1	2
13	Leg with Direction wheel	W2	2
14	Range knob	CK01	2
15	Screw(6*70mm)	S70	1

16	Screw(6*12mm)	SP612	8
17	Screw(6*16mm)	S616	2
18	Screw(6*16mm)	S6162	8
19	Gas tank stand(46.5*2.5*2.5cm)	L46	1
20	Screw(6*55mm)	S655A	6
21	Nut	SW1	5
22	Screw(6*60mm)	S660	1
23	0-1PSI regulator& hose	RG8	1

# ASSEMBLY INSTRUCTION



**Side View**



**Finish Assembling**

