

SOFA

ASSEMBLY INSTRUCTION



ASSEMBLY INSTRUCTION

ASSEMBLY TIPS:

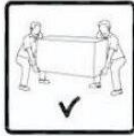
- 1.Remove hardware from box and sort by size.
- 2.Please check to see that all hardware and parts are present prior to start of assembly.
- 3.Please follow attached instructions in the same sequence as numbered to assure fast & easy assembly.



Warning!!

- 1.Don't attempt to repair or modify parts that are broken or defective.Please contact the store immediately.
- 2.This product is for home use only and not intended for commercial establishment.

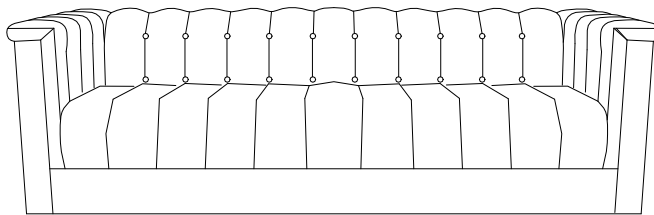
PARTS IDENTIFICATION



ASSEMBLY TIME PER UNIT:

10 MINUTES

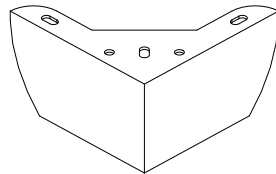
A



SOFA

1PC

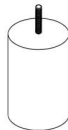
B



LEGS

4PCS

C



MIDDLE LEG

1PC

D



METAL GASKETS

4PCS

E



PLASTIC WASHER

1PC

HARDWARE PACKAGE

1

Allen wrench



1PC

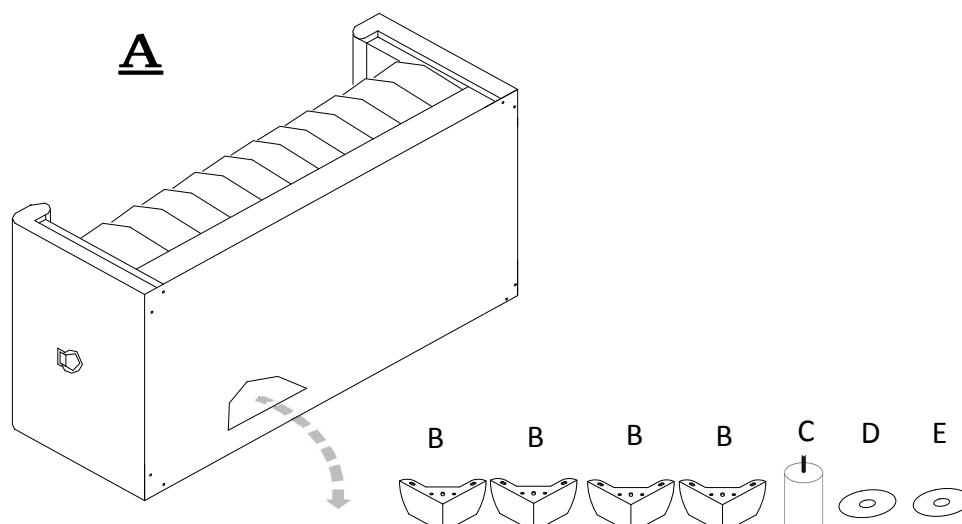
2

Bolt



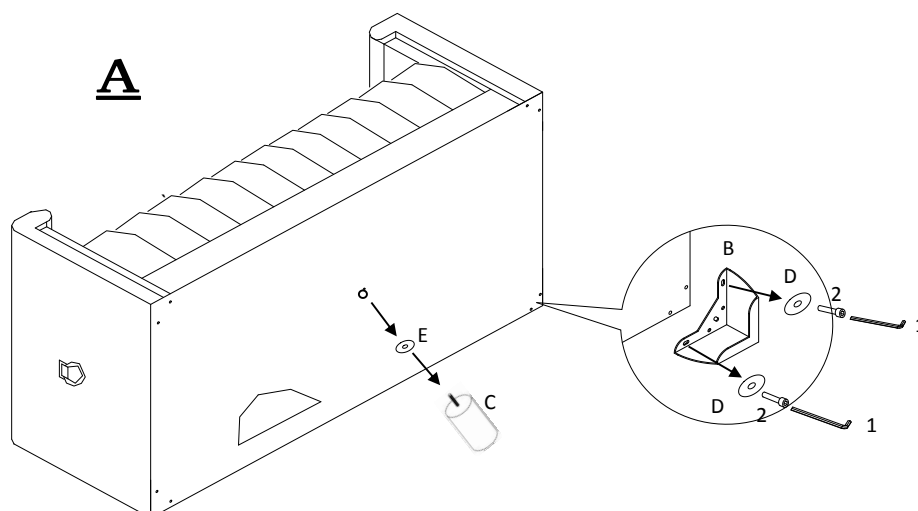
8PCS

STEP 1



Place the sofa on its back, then open the zipper underneath the bottom of the sofa to remove the leg package.

STEP 2



STEP 3

