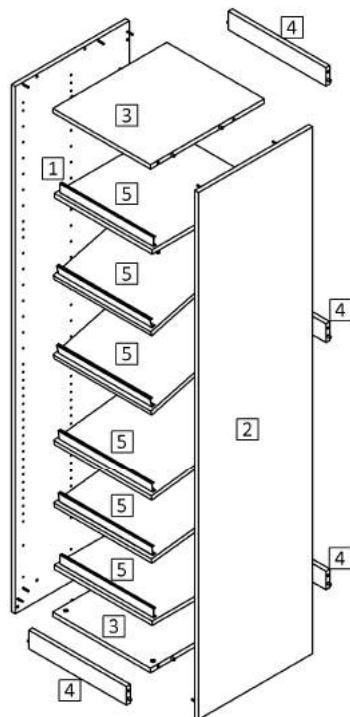
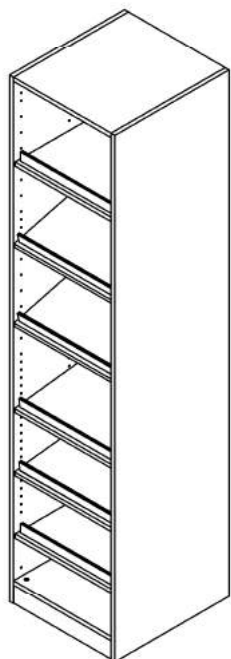


ASSEMBLY INSTRUCTIONS:

- 1- PLEASE READ THESE INSTRUCTIONS COMPLETELY BEFORE STARTING ASSEMBLY;
- 2- THE ASSEMBLY MUST BE EXECUTED ON A FLAT AND CLEAN SURFACE;
- 3- FOR CLEANING PLEASE USE A WATER SEMI WET CLEAN CLOTH FOLLOWING BY A DRY CLEAN CLOTH;
- 4- DO NOT USE ABRASIVES SOLUTIONS;





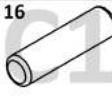
ASSEMBLY INSTRUCTIONS

BOX 09

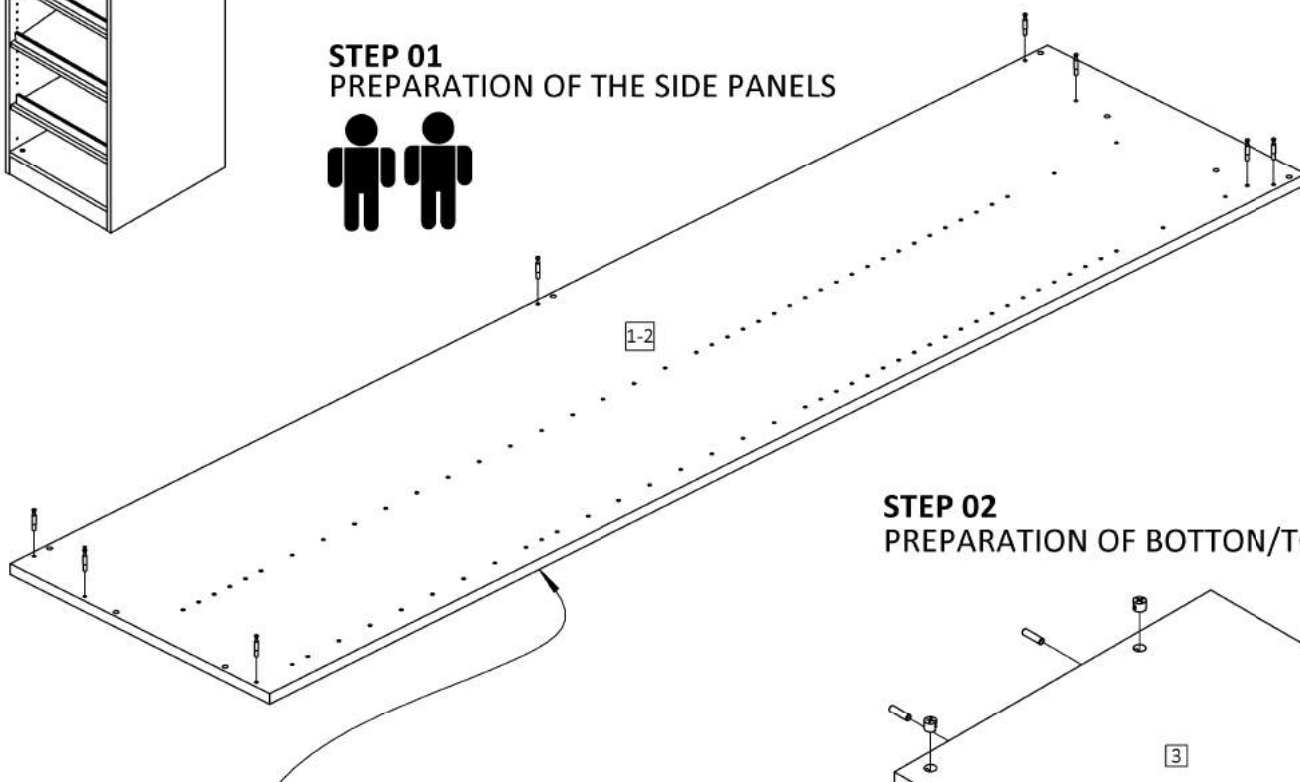
PART LIST		
PART NUMBER	Qty	DESCRIPTION:
1	1	LEFT SIDE PANEL
2	1	RIGHT SIDE PANEL
3	2	BOTTOM/TOP PANEL
4	4	FRAME
5	6	SHOE RACKS



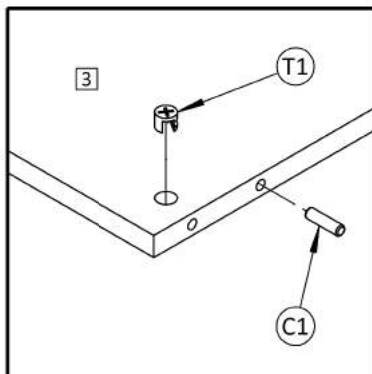
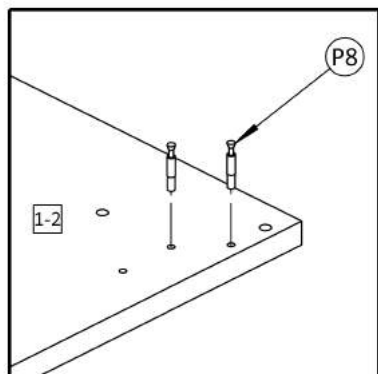
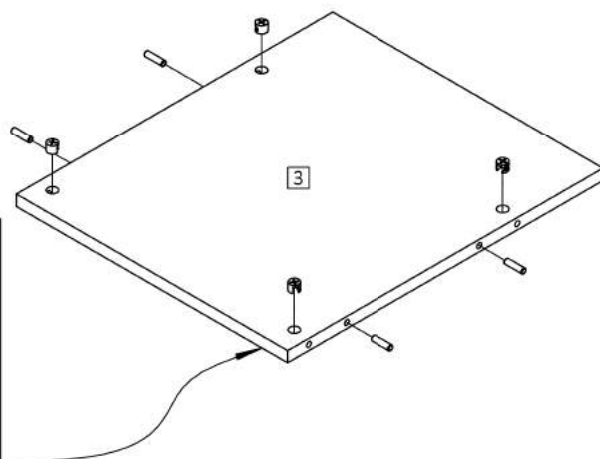
CABINET ASSEMBLY

CABINET HARDWARES	16	16	16
	 CAM LOCK SCREWS	 CAM LOCK	 DOWEL 5/16 X 1 3/16

STEP 01 PREPARATION OF THE SIDE PANELS



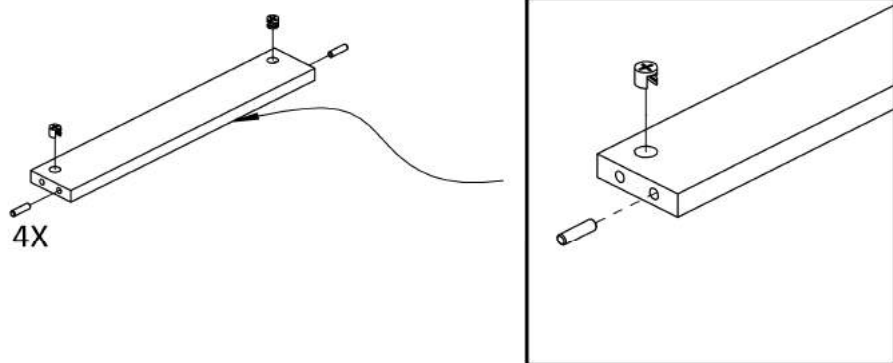
STEP 02 PREPARATION OF BOTTOM/TOP PANELS



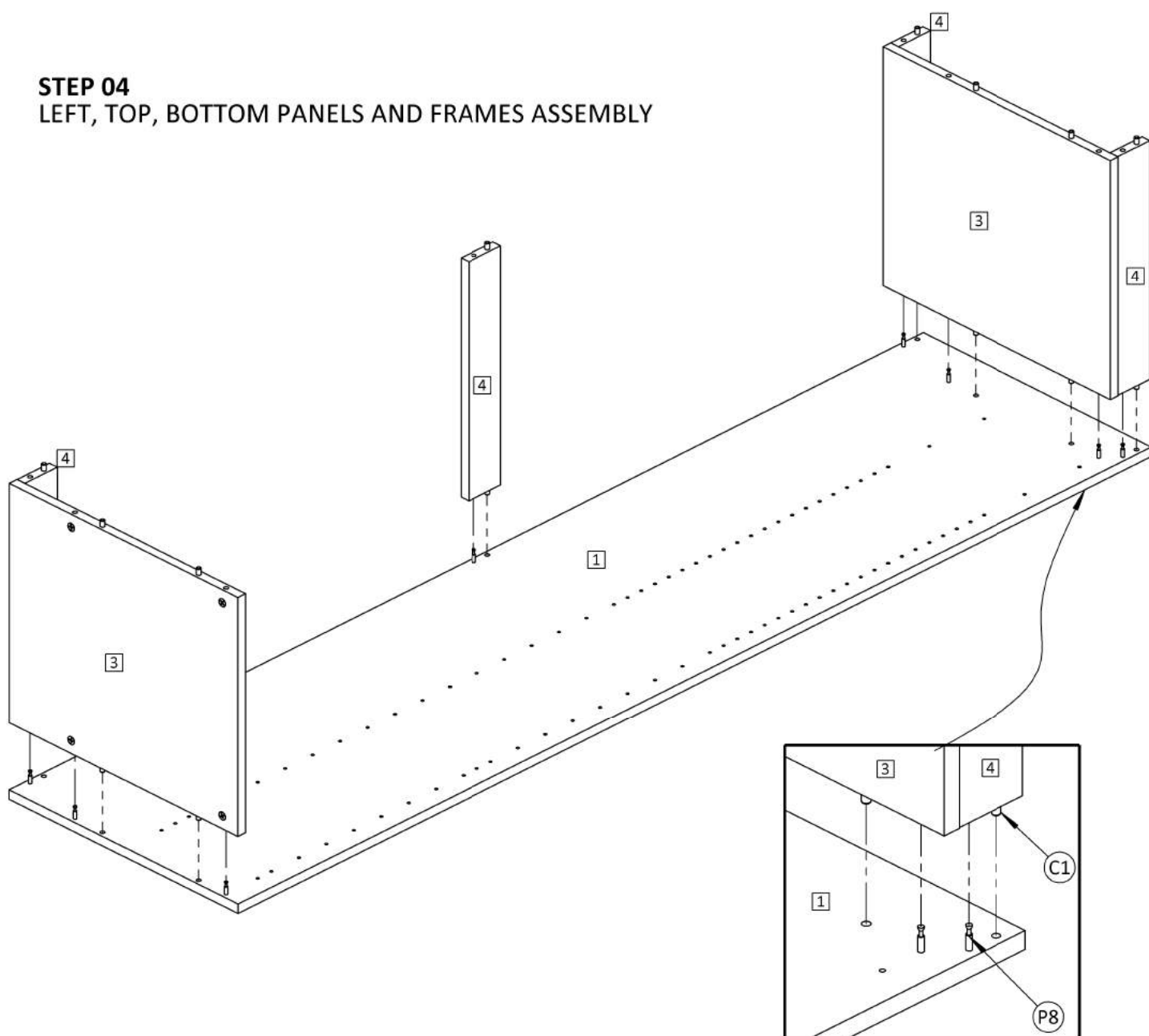
STEP 03
PREPARATION OF THE FRAMES

ASSEMBLY INSTRUCTIONS

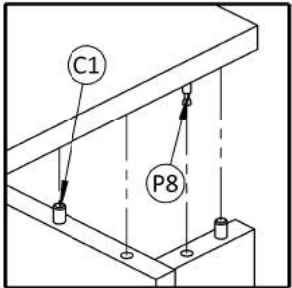
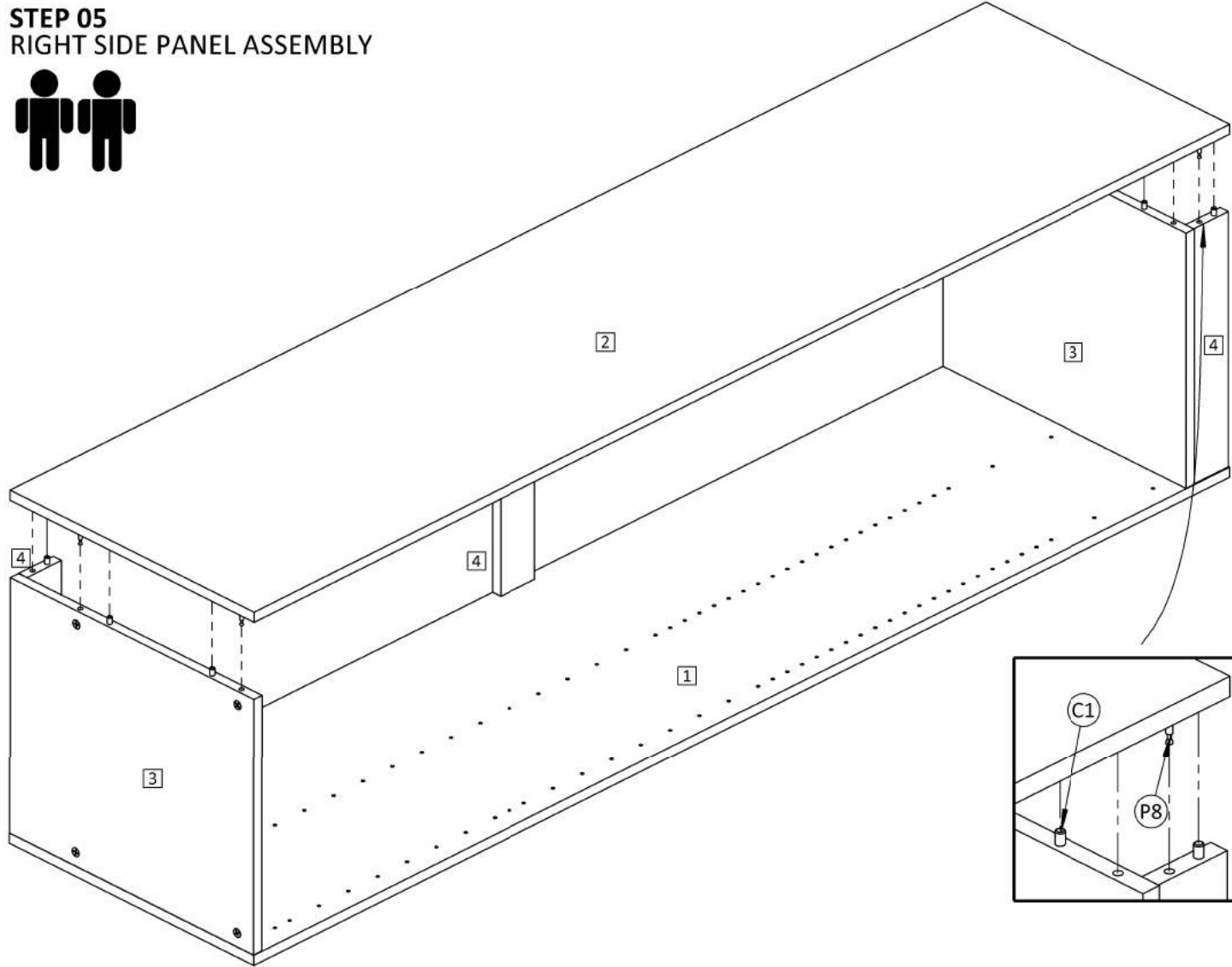
BOX 09



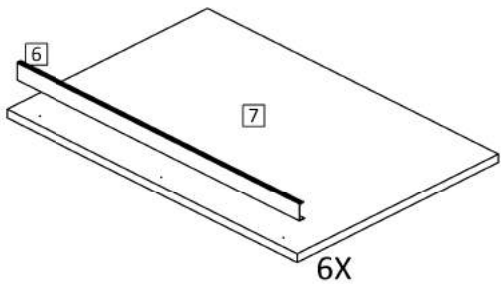
STEP 04
LEFT, TOP, BOTTOM PANELS AND FRAMES ASSEMBLY



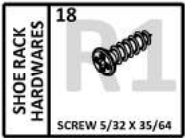
STEP 05
RIGHT SIDE PANEL ASSEMBLY



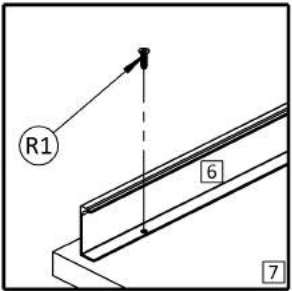
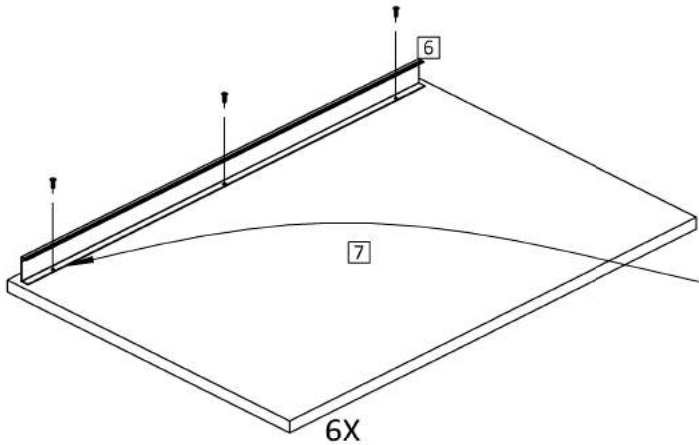
SHOE RACK ASSEMBLY
Item 5 - Shoe Rack



PART LIST		
PART NUMBER	QTY	DESCRIPTION:
6	6	METAL FILLER
7	6	SHOE RACK



STEP 06
SHOE RACK ASSEMBLY



STEP 07

FIXING THE CABINET ON THE WALL



FIXING THE CABINET

DRILL THE WALL
USING A DRILLER
IN ORDER TO
INSERT THE PLUG

ASSEMBLY INSTRUCTIONS

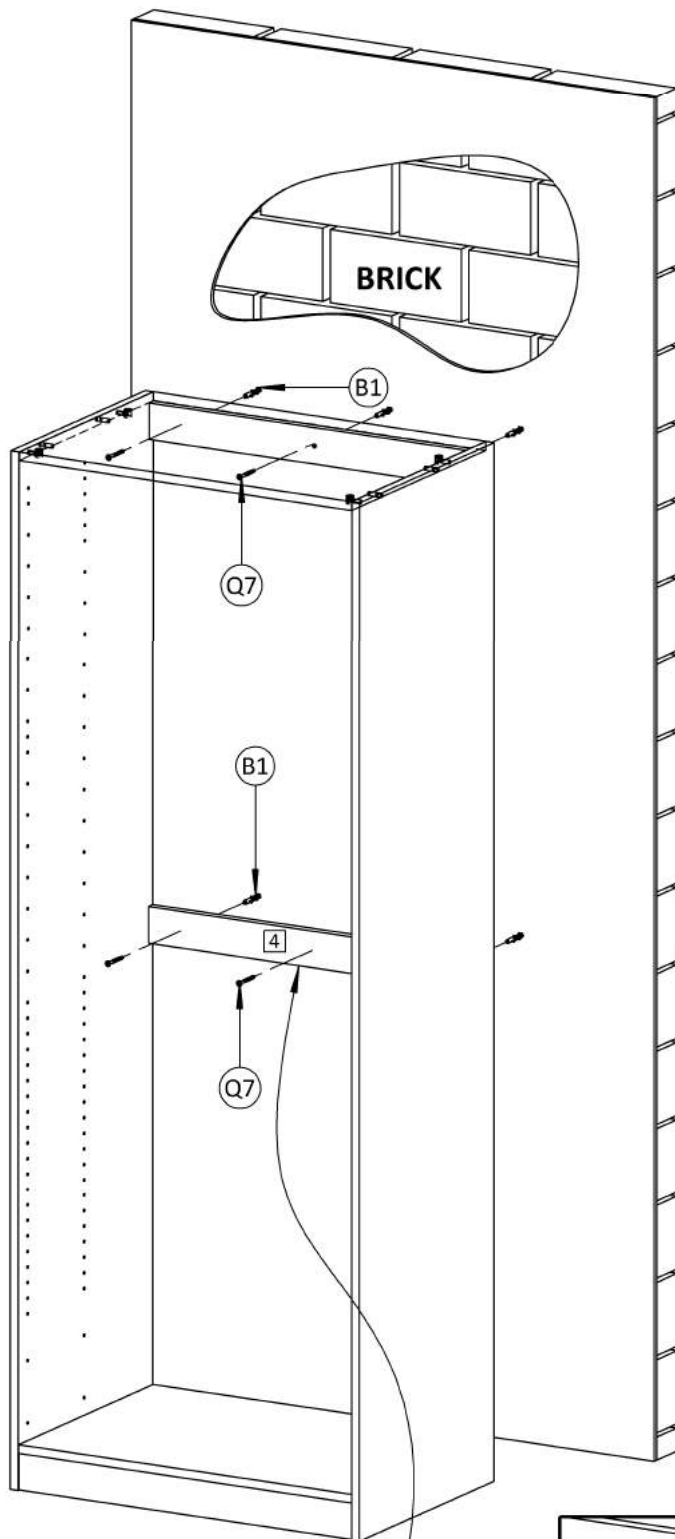
BOX 09



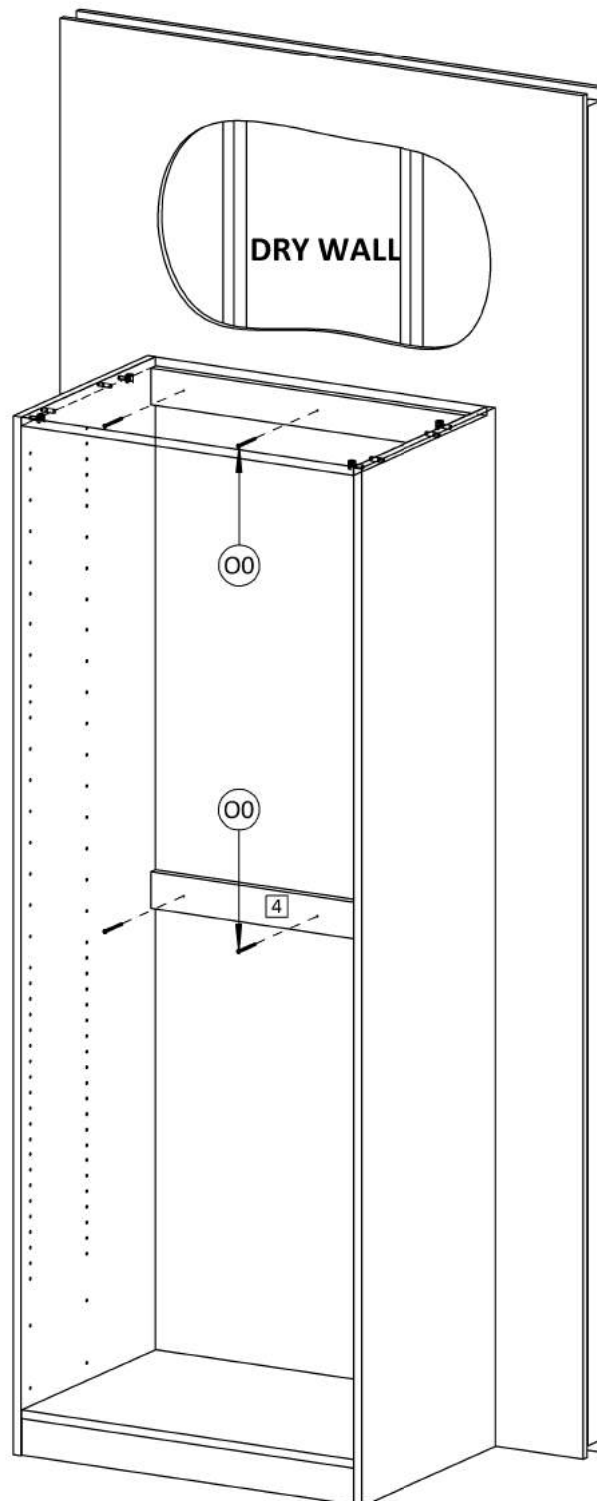
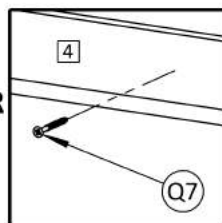
IT IS REQUIRED TO FIX
THE CABINETS ON THE WALL
RISK OF FALL!



FIXING HARDWARES	06	06	06	08
	SCREW 5/32 X 2 3/4	SCREW 1/4 X 2 3/4	PLASTIC PLUG	SCREW 9/64 X 1 1/4



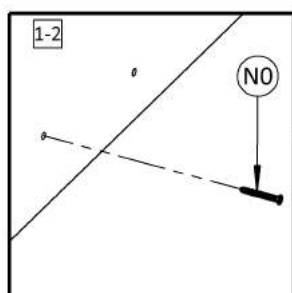
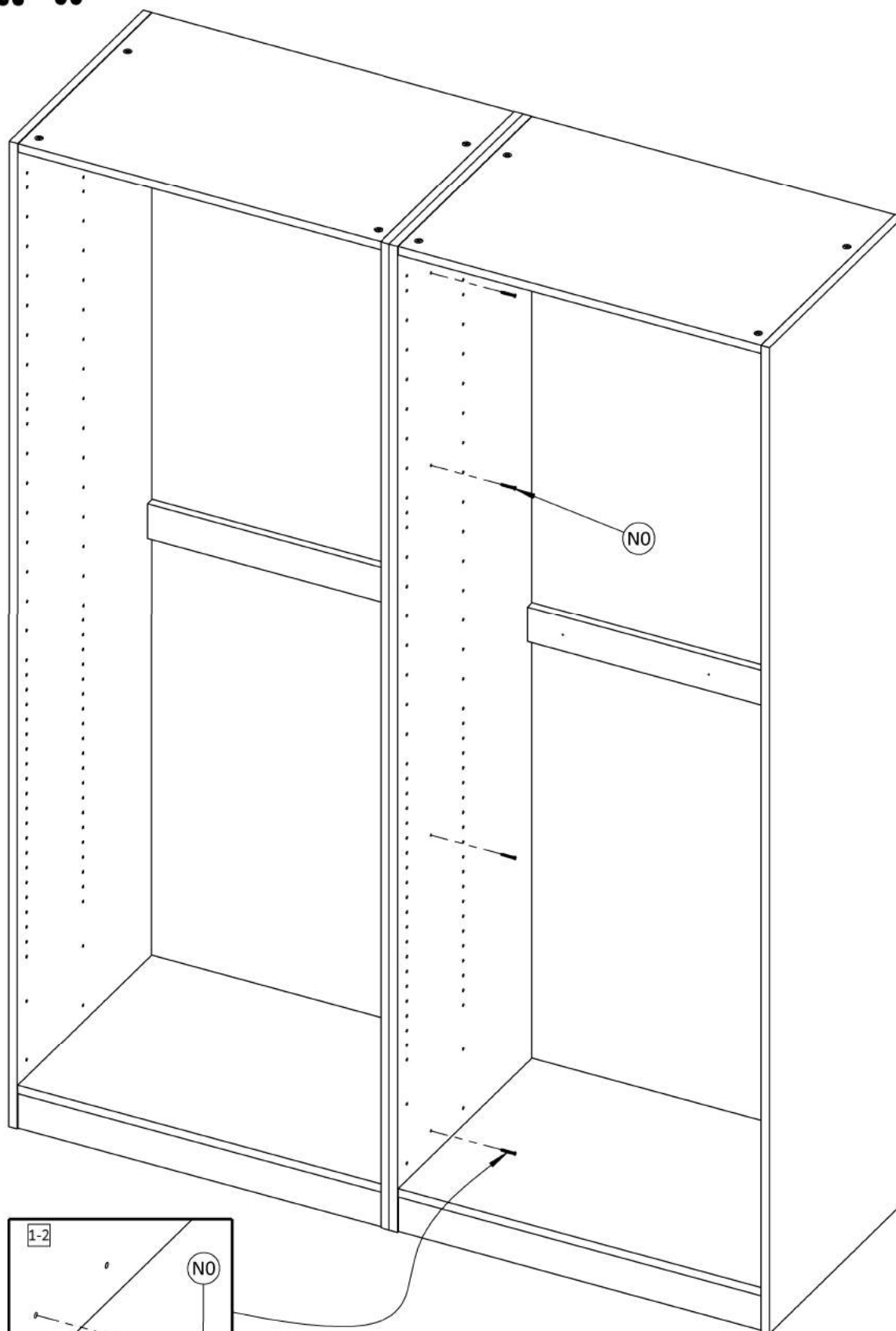
SCREW IN THE CENTER
OF THE FRAME



THE CABINET MUST ALWAYS BE
SUPPORTED ON THE GROUND

STEP 08
JOINING THE CABINETS

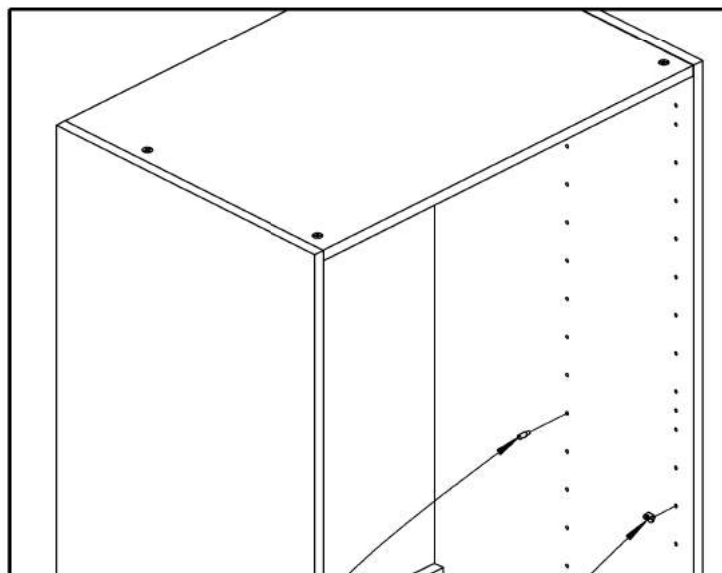
ASSEMBLY INSTRUCTIONS
BOX 09



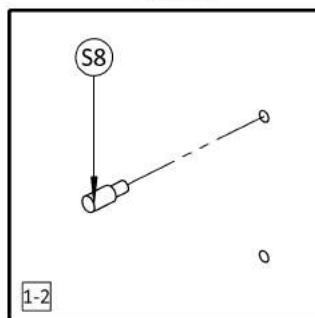
FIXING THE SHOE RACK INSIDE THE CABINET

STEP 09
FIX THE SHOE RACK SUPPORTS
ON THE SIDE PANNELS

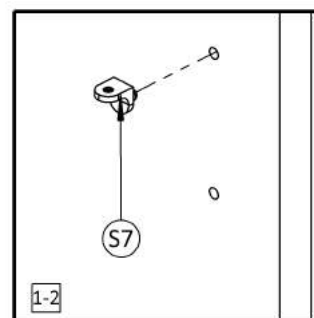
FIXING SHOE RACK HARDWARES	12	12	12
			
	SHELF SUPPORT	SHOE RACK PIN	SCREW 15/64 X 33/64



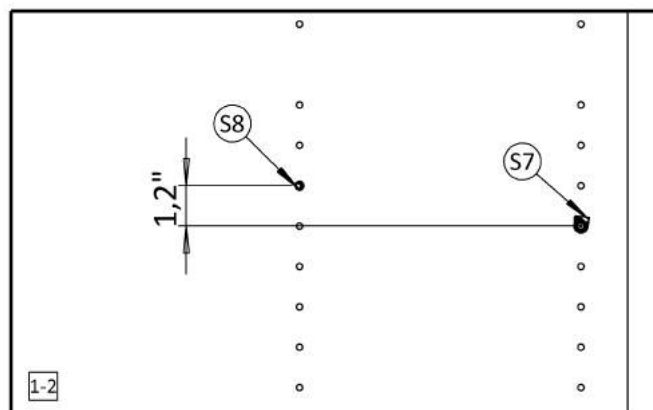
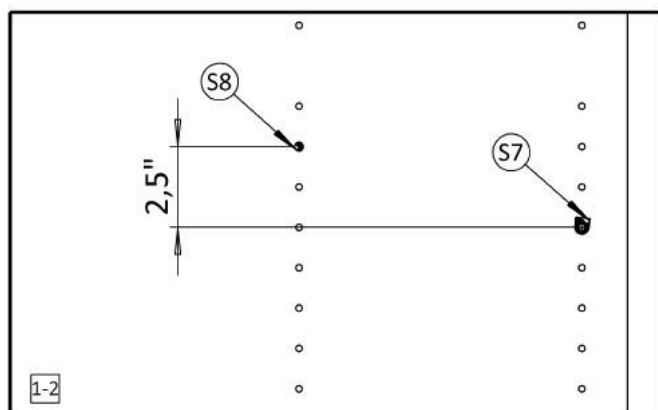
BACK



FRONTAL



THE BACK PIN CAN BE FIXED UP 1,2" OR 2,5"
IN RELATION TO THE FRONTAL SUPPORT

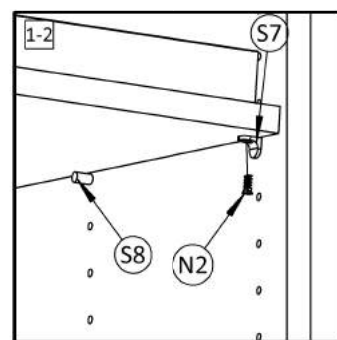
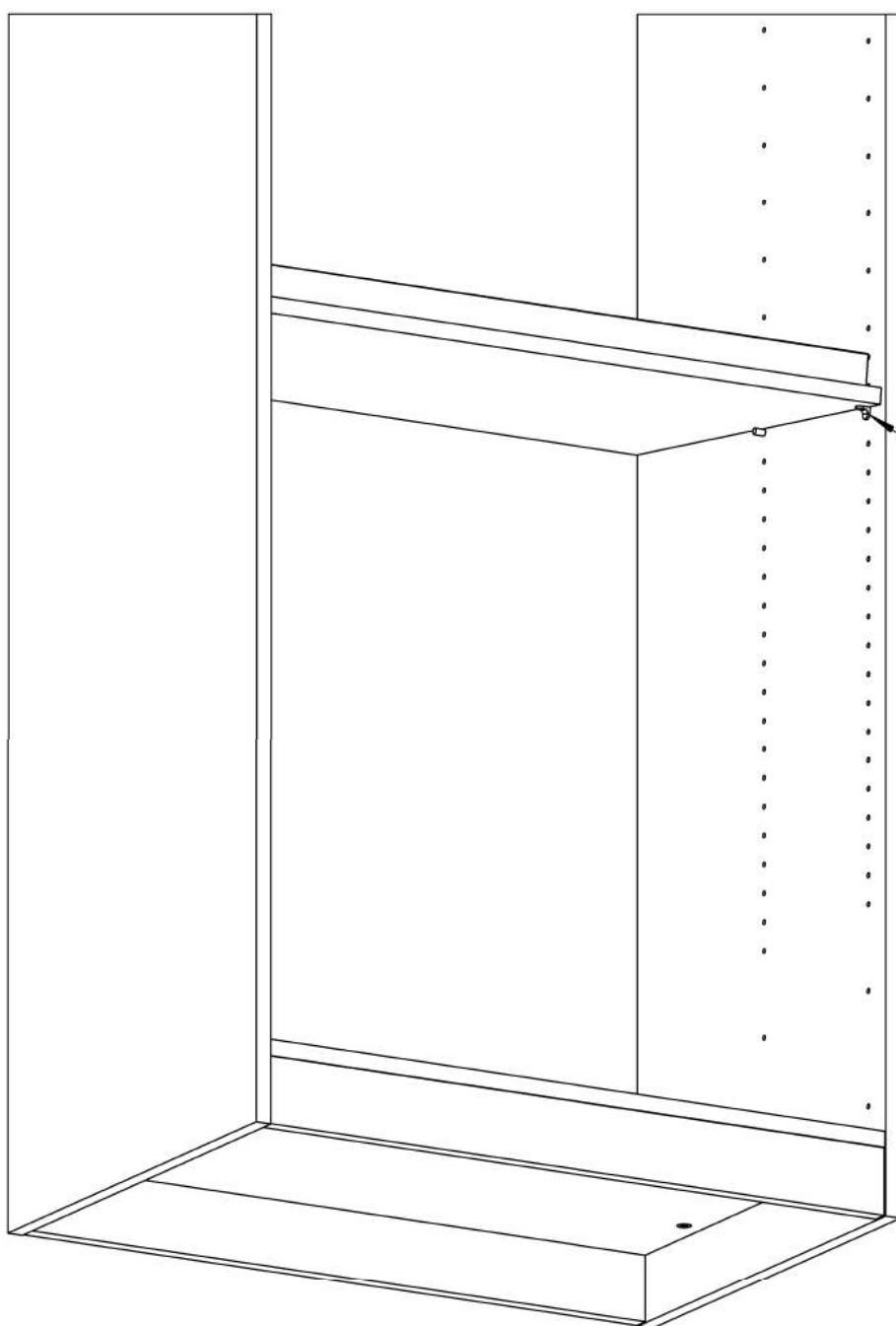


STEP 10

FIX SHOE RACK INSIDE THE CABINET

ASSEMBLY INSTRUCTIONS

BOX 09



FIX THE SHOE RACK SUPPORTS
ON THE SIDE PANNELS