

CAUTION: IMPORTANT SAFETY INSTRUCTIONS

READ AND FOLLOW ALL SAFETY INSTRUCTIONS

- Do not use seasonal products outdoors unless marked suitable for indoor and outdoor use. When products are used in outdoor applications, connect the product to a Ground Fault Circuit Interrupter (GFCI) outlet. If one is not provided, contact a qualified electrician for proper installation.
- This seasonal use product is not intended for permanent installation or use.
- Do not mount or place near gas or electric heaters, fireplaces, candles or other similar sources of heat.
- Do not secure the wiring of the product with staples or nails, or place on sharp hooks or nails.
- Unplug the product when leaving the house, when retiring for the night, or if left unattended.
- Do not let lamps rest on the supply cord or any wire.
- **CAUTION:** This is an electrical product – not a toy! To avoid risk of fire, burns, personal injury and electric shock, it should not be played with or placed where small children can reach it.
- Do not use this product for other than its intended use.
- Do not hang ornaments or other objects from cord, wire or light string.
- Do not close doors or windows on the product or extension cords as this may damage the wire insulation.
- Never operate this product if the power cord or plug is damaged.
- Use only manufacturer specified replacement bulbs.
- Read and follow all instructions that are on the product or provided with the product.

USE AND CARE INSTRUCTIONS

- When storing the product, carefully remove the product from wherever it is placed, avoiding any undue strain or stress on the product conductors, connections, and wires.
- When not in use, store neatly in a cool, dry location protected from sunlight.

IMPORTANT NOTE: Some unassembled section pieces have light string wires strung between them. Be careful not to put unnecessary strain on the wires during assembly procedures.

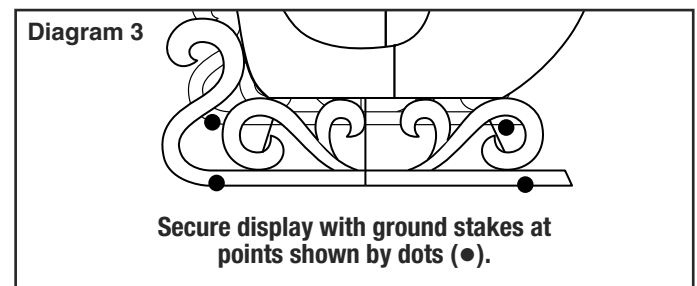
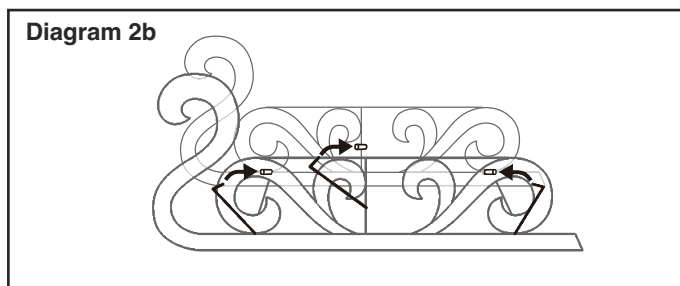
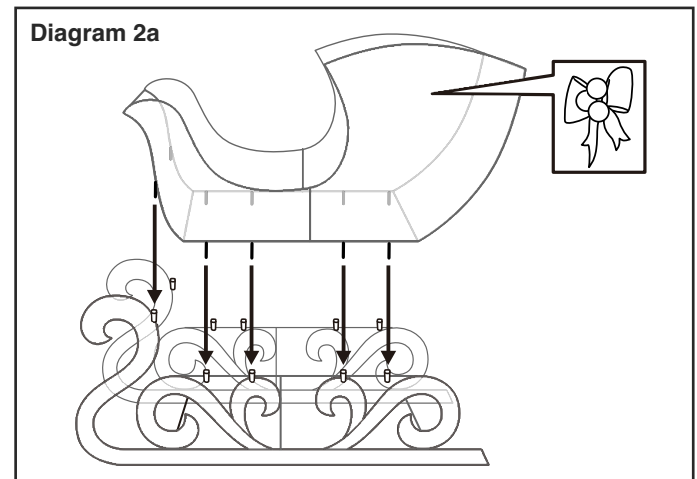
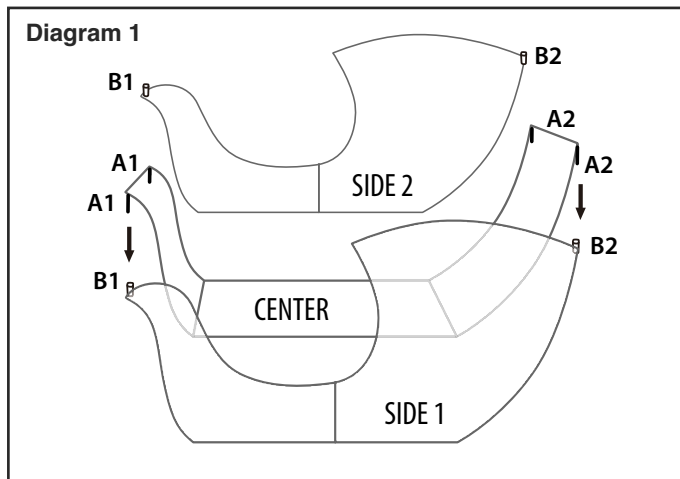
Assembly

1. (Diagram 1) Assemble the upper sleigh by inserting the four rods of the center sleigh section into the loops on the side sections. A1 rods into B1 loops. A2 rods into B2 loops.
2. (Diagram 2a) Insert the five rods located on Slide 1 into the corresponding loops on the lower sleigh section. Repeat this procedure for opposite side.

3. (Diagram 2b) Insert the ends of the three hinged hooks located in the sleigh lower section into the loops on the opposite side.
4. Attach ornament bow as shown in diagram. Position as desired.

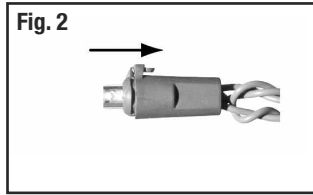
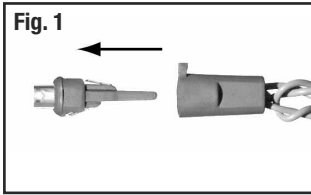
Optional: Tie wraps are included to bind larger sections together for added security. Place where desired.

Secure the assembled piece to the ground using the supplied stakes (Diagram 3). Plug light strings cords into a power supply. Plugs can be "piggy-backed" - - plugged into each other, and then into a receptacle.



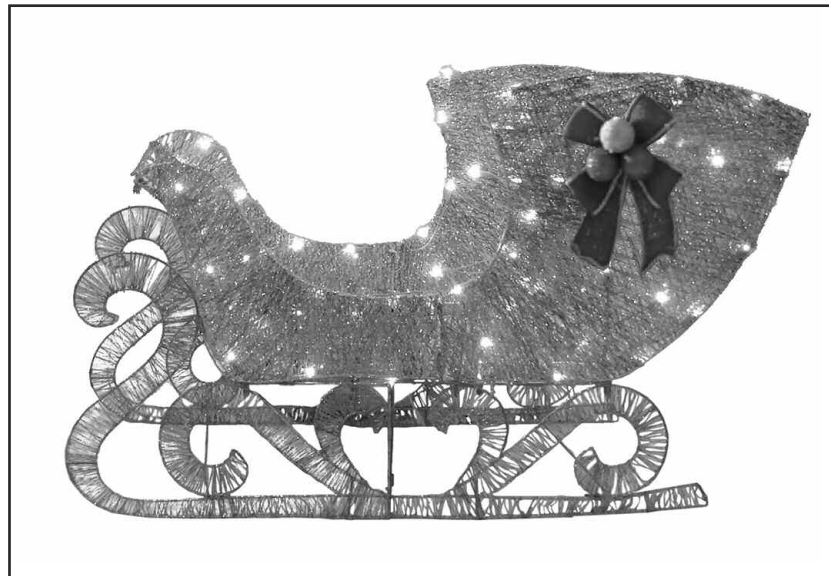
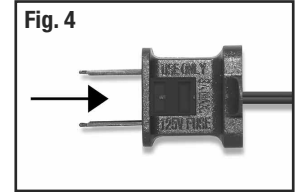
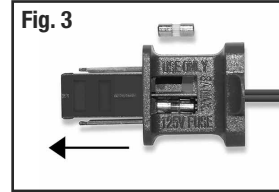
Bulb Replacement

1. Unplug light string from power source.
2. Gently pull the bulb straight out of the socket (Figure 1).
3. Carefully insert new bulb into socket – bulb is keyed and only goes in one way (Figure 2).



Fuse Replacement

1. Unplug light string from power source.
2. Fuses are located in light string plug. Slide the fuse access cover away from cord side (in direction of arrow, Figure 3) exposing fuses.
3. Remove fuses from compartment and examine. Replace burnt out fuse with new one.
4. Close fuse compartment by sliding access cover back in towards cord side of plug (Figure 4).



SAVE THESE INSTRUCTIONS