

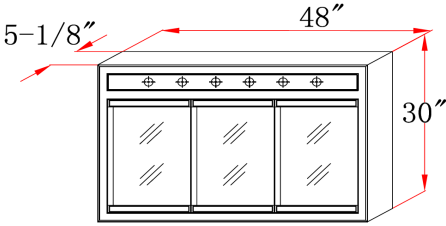
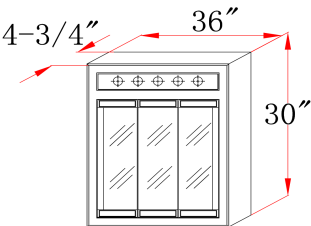
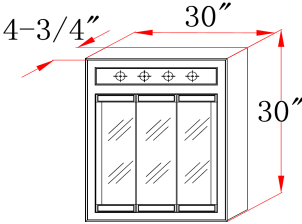
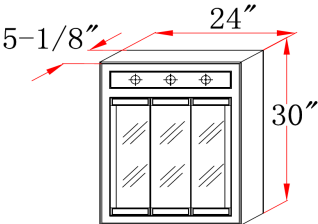
# Tri-View Lighted Medicine Cabinet

## Specifications

- Nutmeg Oak Finish
- Concealed hinges
- Pre-assembled design
- 3 Doors
- 2 Shelves
- Solid Oak Frame
- Durable water resistant finish
- Light bulbs not included



## Dimensions



## Warranty & Compliances

Warranty	Limited 1 year warranty
California 93120	Compliant



## Order Codes & Finishes/Colors

24" w x 5" d x 30" h	Uses three 60-Watt, medium base bulbs
30" w x 5" d x 30" h	Uses four 60-Watt, medium base bulbs
36" w x 5" d x 30" h	Uses five 60-Watt, medium base bulbs
48" w x 5" d x 30" h	Uses six 60-Watt, medium base bulbs

Type:  
Job:  
Order Code:  
Approvals:

We reserve the right to make changes in materials, specifications & models at any time. We also reserve the right to discontinue product without notice or obligation.