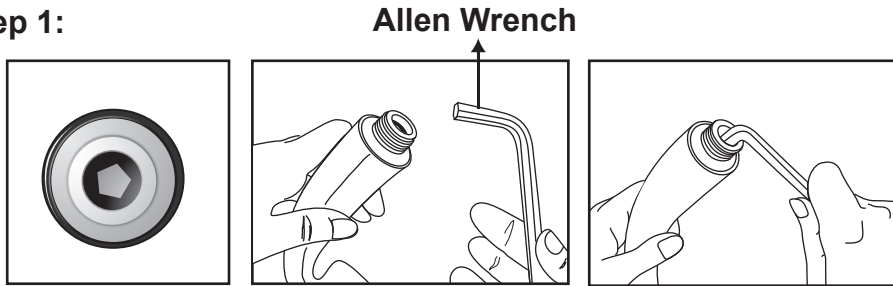


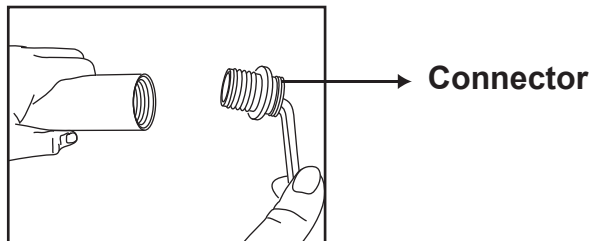
How to self-clean when the LED does not light up well? (For Handheld Shower)

Step 1:



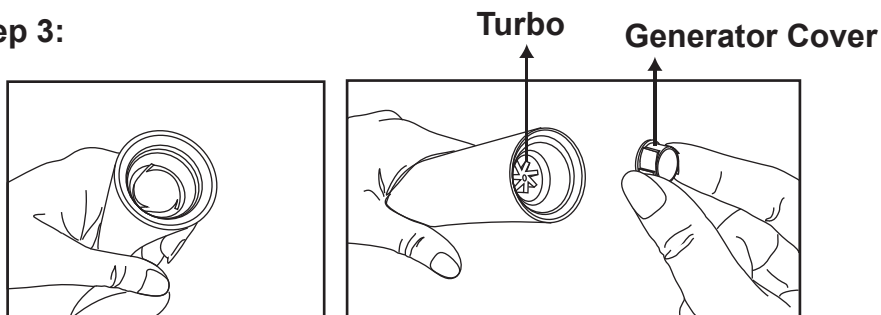
Insert the Allen Wrench Into the bottom of the handheld shower.

Step 2:



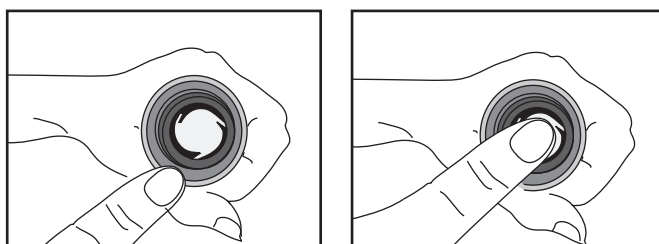
Remove the Connector by turning the Allen Wrench counter-clockwise.

Step 3:



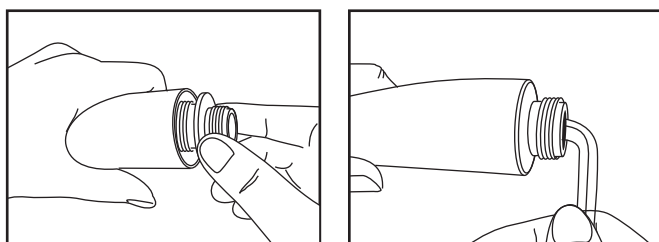
Remove the Generator Cover. Clean the Turbo and turn the Turbo a couple turns.

Step 4:



Put the Generator Cover back.

Step 5:



Screw the Connector back.