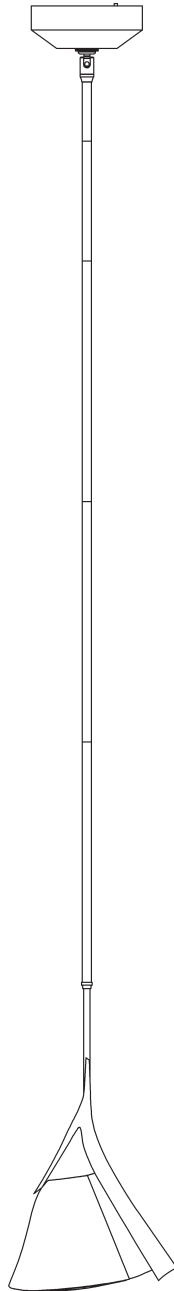


ASSEMBLY & INSTALLATION INSTRUCTIONS

A831

Mobius LED Mini Pendant 139845



Component Parts

A	Fixture
B	Wire Connectors
C	Crossbar
D	Driver
E	Cupped Washer
F	Ground Screw
G	Fixture Bracket
H	# 8 Screw (2)
I	Swivel
J	Canopy
K	Canopy Ring
L	3" Fixture Pipe (1)
M	6" Fixture Pipe (1)
N	12" Fixture Pipe (3)
O	Stem Nipple (4)



ASSEMBLY & INSTALLATION INSTRUCTIONS

A831

Mobius LED Mini Pendant 139845

CAUTION: FAILURE TO INSTALL THIS FIXTURE PROPERLY MAY RESULT IN SERIOUS PERSONAL INJURY OR DEATH AND PROPERTY DAMAGE. We recommend installation by a licensed electrician. This product must be installed in accordance with applicable installation code(s), by a person familiar with the construction and operation of the product and the hazards involved.*

Please Note: After installation extra hardware and accessories are possible; our kits are used on multiple products.

To Install Fixture (Figures 1)

CAUTION: BE SURE POWER IS OFF AT THE MAIN BREAKER BOX PRIOR TO INSTALLATION.

1. Carefully unpack the fixture from the carton. Do not remove plastic or bubble wrap around acrylic. These will keep it protected while installing fixture.
2. Using two machine screws (not provided), fasten the crossbar (C) & driver (D) to the electric box .

Note: A new electric box comes with screws. When replacing a fixture, retain the existing screws for use with the new fixture.

3. Using suitable wire connectors (not provided), connect driver wires (D) to supply wires (white to white supply, black to black supply). Run a pigtail from the crossbar (C) to the junction box using green ground screw (F) and cupped washer (E).

CAUTION: MAKE SURE WIRE CONNECTORS ARE TWISTED ON SECURELY AND NO BARE WIRE IS EXPOSED.

4. Locate fixture pipes (L,M,N), fixture (A), stem nipples (O) . Stem nipples (O) can be found in the kit bag.
5. Provided are multiple fixture pipes in three different lengths. Choose the combination that will achieve the overall height desired. Refer to the table below to determine the pipes required to reach the desired overall height. Once you have determined the components necessary, feed the wires that exit fixture (A) through the individual components and thread pipes and nipples together. Wires will slip easier through loose components than through pipes and nipples that are pre-assembled. Once wires are run, apply thread locking compound to all the connection points and assemble the pipes and nipples.

		Overall Height of Fixture															
		19.2	22.2	25.2	28.2	31.2	34.2	37.2	40.2	43.2	46.2	49.2	52.2	55.2	58.2	61.2	64.2
# of Pipes Required	3" Pipe (L)		1		1		1		1		1		1		1		1
	6" Pipe (M)			1	1			1	1			1	1			1	1
	12" Pipe (N)					1	1	1	1	2	2	2	2	3	3	3	3

NOTE: APPLICATION OF THE THREAD LOCKING COMPOUND IS NECESSARY TO PREVENT THE PIPE FROM LOOSENING DURING REGULAR MAINTENANCE AND CLEANING OF THE FIXTURE. BE CERTAIN TO APPLY THE COMPOUND.

6. Carefully slide canopy ring (K) and canopy (J) over wires and fixture pipes (L,M,N) until they rest on fixture (A).
7. Slip wires from the fixture (A) through assembled swivel (I) and fixture bracket (G)
8. Using #8 screws (H), that are shipped in crossbar (C), fasten fixture bracket (G) to crossbar (C) taking caution not to pinch any wires.
9. Refer to instructions on next page to continue installation.

ASSEMBLY & INSTALLATION INSTRUCTIONS

A831

Mobius LED Mini Pendant 139845

10. Using provided wire connectors (B); attach fixture wires to driver (D) DC output wires (grey to red and black to black).

Note: Wire connectors are shipped attached to driver output wires. Fixture wires must be stripped before inserted into provided wire connector.

11. Hold canopy (J) close to ceiling and connect all ground wires (bare copper or green to bare copper or green). Push wires back into electric box.

CAUTION: MAKE SURE WIRE CONNECTORS ARE TWISTED ON SECURELY AND NO BARE WIRE IS EXPOSED.

12. Slide canopy (J) against ceiling, and secure with canopy ring (K).

CAUTION: BE SURE NO WIRES ARE PINCHED BETWEEN THE CANOPY AND THE CEILING.

13. Remaining packaging materials can now be removed.

14. Restore electricity at the main breaker.

Tips for Cleaning Acrylic:

- **DO NOT** use products that contain ammonia, alcohol, or abrasives such as Windex and other commercial cleaners.
- **DO NOT** use coarse sponges or pads.

RECOMMENDED:

Use a soft cotton cloth with warm water or a polish dedicated especially for acrylic.

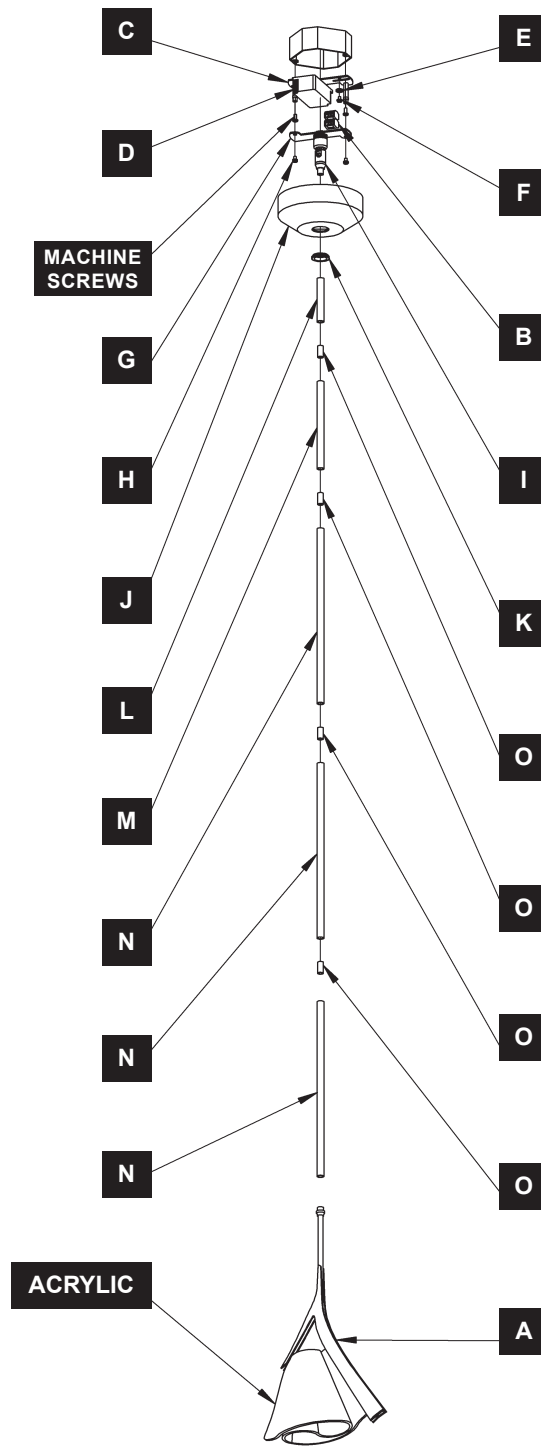


HUBBARDTON FORGE.

ASSEMBLY & INSTALLATION INSTRUCTIONS

A831

Mobius LED Mini Pendant 139845



(Figure 1)

If you need further assistance, or find that you are missing any parts, please contact the dealer from which you purchased this product. We hope you enjoy your fixture!

*** Hubbardton Forge will not be liable for injury or damage caused by improper installation, lamping or use of this fixture.**