

3054 WALK-IN BATHTUB 30" x 54"

Key Attributes

Walk-in Type: Walk-in
Material: Acrylic
Soaker Weight: 120 lbs
Jetted Weight: 155 lbs
Average Fill Capacity*: 50-60 gal
*Estimated with occupant inside. May vary based on occupant's volume.

Required Electrical

Service 110v

Air Bath or Whirlpool..... 1x 15 amp GFCI
Whirlpool w/ Inline Heater..... 1x 20 amp GFCI
Whirlpool & Air Jetted..... 1x 20 amp GFCI
Soaker..... n/a

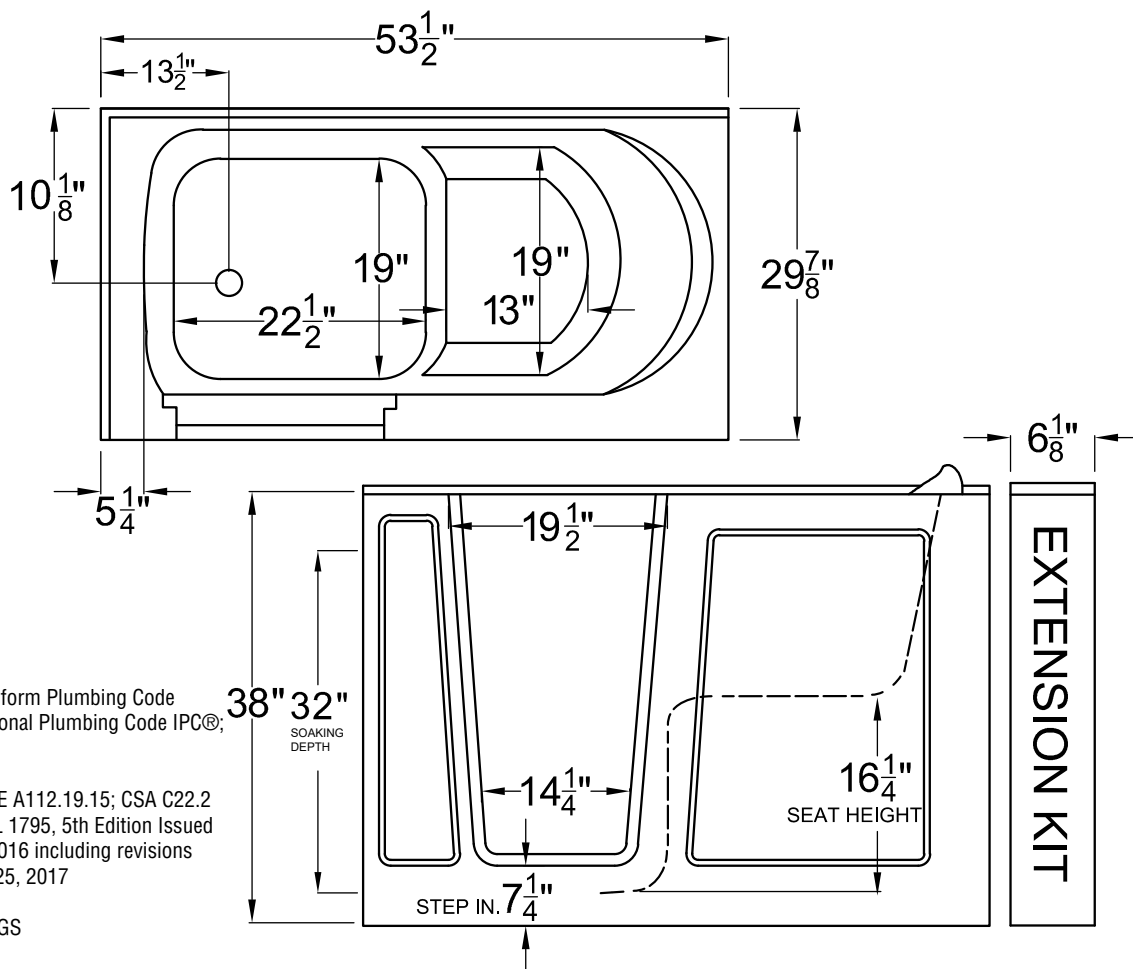
Available Therapy Systems

3054**S Non-Jetted Soaking
3054**H Whirlpool Jetted
3054**A Air Jetted
3054**D Whirlpool & Air Jetted

Key Measurements (inches)

Overall Outer: 53.5 x 29.75 x 38
Interior Width: 22
Standing Area: 22.5 x 19
Seat Width: 19
Seat Height: 16.25
Soaking Depth: 32
Drain to Side Wall: 13.5
Drain to Back Wall: 10.125
Step-in Height: 7.25
Door Clearance: 11.125
Faucet Deck: 4.375
Tile Flange: 1
Extension Kit: 6

It is vital that tub is completely level with all leveling feet touching the floor for the door, seal and drain to work properly.



Compliance: Uniform Plumbing Code
UPC®; International Plumbing Code IPC®;
ADA

Standards: ASME A112.19.15; CSA C22.2
No. 218.2-15; UL 1795, 5th Edition Issued
September 02, 2016 including revisions
through August 25, 2017

Certifeid: UPC, EGS

- **IMPORTANT!** TEST THE TUB'S DRAIN AND JETS (if any) BEFORE PERMANENT INSTALLATION!
- **INSPECT THE TUB WHEN RECEIVED!** Report any damages or missing parts within 5 business days of delivery date.
- Before ordering or installing, please consider future access to equipment.
- **Please measure tub on-site before building tub surrounding!**
- Jet, pump & blower locations are predetermined and cannot be changed.
- Tub door must remain closed when not in use.

- Please note that installer(s) must be certified or warranty will be voided.
- Measurements are subject to a +/- .5" variance and subject to change without notice. Measurements here in supersede all other published specs prior to publication date shown below.
- Inline heater (if included) is designed to maintain water temperature during operation. It will not heat cold water to desired bathing temperature.
- Product must be registered for warranty activation. See user manual or visit SWCORP.com/register for more information.