

INSTALLATION MANUAL

# Farmhouse Stainless Steel Sink

## **Thank you for your purchase**



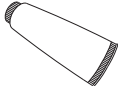



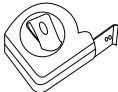
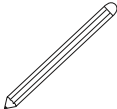
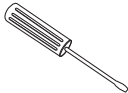
We would like to take this opportunity to thank you for choosing this manufacturer. We hope that you are completely satisfied with your purchase, and enjoy it for years to come. If you have any questions, or require technical assistance, please contact us and one of our representatives will be happy to help.

## **Prior to Installation:**

- Inspect the sink prior to installation to make sure the sink has not been damaged during shipping
- Use the cut-out template provided
- Observe all plumbing and building codes according to your state requirement
- Additional floor and wall preparation may be required to avoid damaging the product
- Make sure to purchase the correct cabinet for your farmhouse sink. Farmhouse base cabinets should be 3" larger than the actual size of the sink
- Not recommended to be installed with laminate countertop

## Tools you will need:

---

|   |   |   |   |   |
|---|---|---|---|---|
|  |  |  |  |  |
| Safety Goggles  | Drill   | Silicone Adhesive   | Jig Saw   | Acetone   |
|  |  |  |  |   |
| Phillips Screwdriver  | Tape Measure  | Pencil  | Screwdriver   |   |

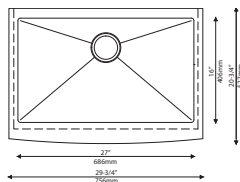
**NOTE:** Specialized tools may be necessary to install this Stainless Steel Undermount sinks with countertop materials other than wood, marble, or granite

## Parts List

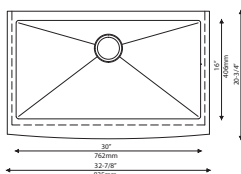
---

- Cut-Out Template
- Bottom Grids
- 1 Drain for Single Bowl
- 2 Drains for Double Bowls

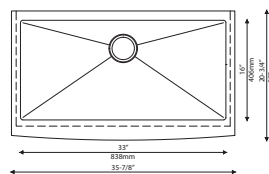
# Dimensions



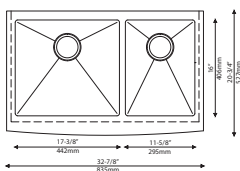
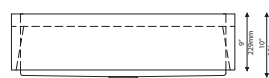
29 3/4" x 20 3/4" x 10"  
Min Cabinet Size: 33"



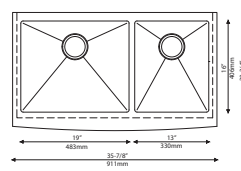
32 7/8" x 20 3/4" x 10"  
Min Cabinet Size: 36"



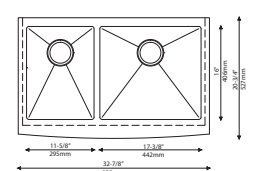
35 7/8" x 20 3/4" x 10"  
Min Cabinet Size: 39"



32 7/8" x 20 3/4" x 10"  
Min Cabinet Size: 36"



35 7/8" x 20 3/4" x 10"  
Min Cabinet Size: 39"



32 7/8" x 20 3/4" x 10"  
Min Cabinet Size: 36"

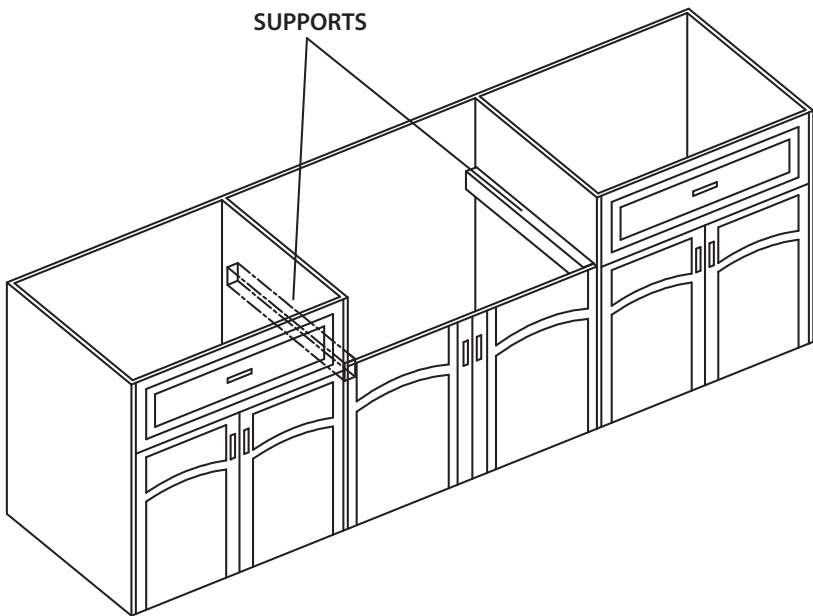
## 1. Measure & Build Supports

---

- Measure the actual height of apron
- Build supports on inside of cabinet based on sink measurements

**Installer Tip:** Support Options

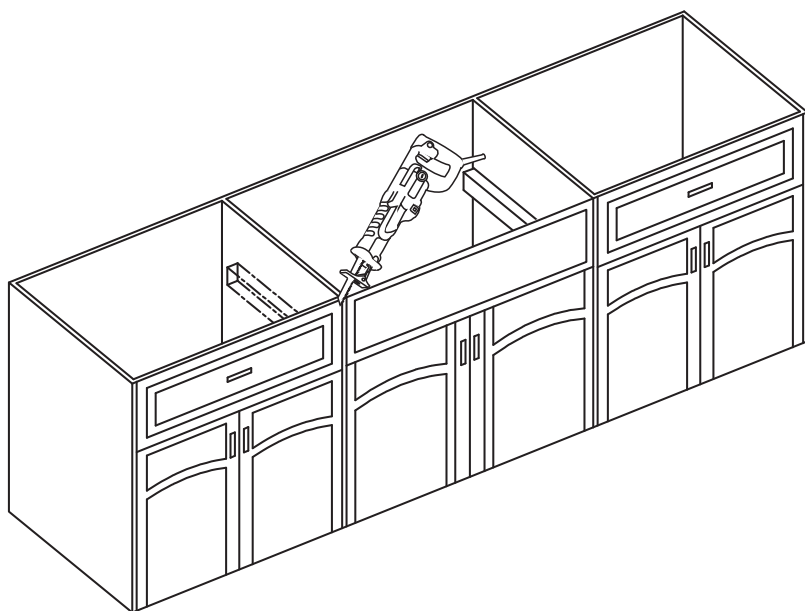
- 1 ¼" Angle Irons
- (2) 2"x 4'
- ¾" Plywood



## 2. Cut Cabinet Front

---

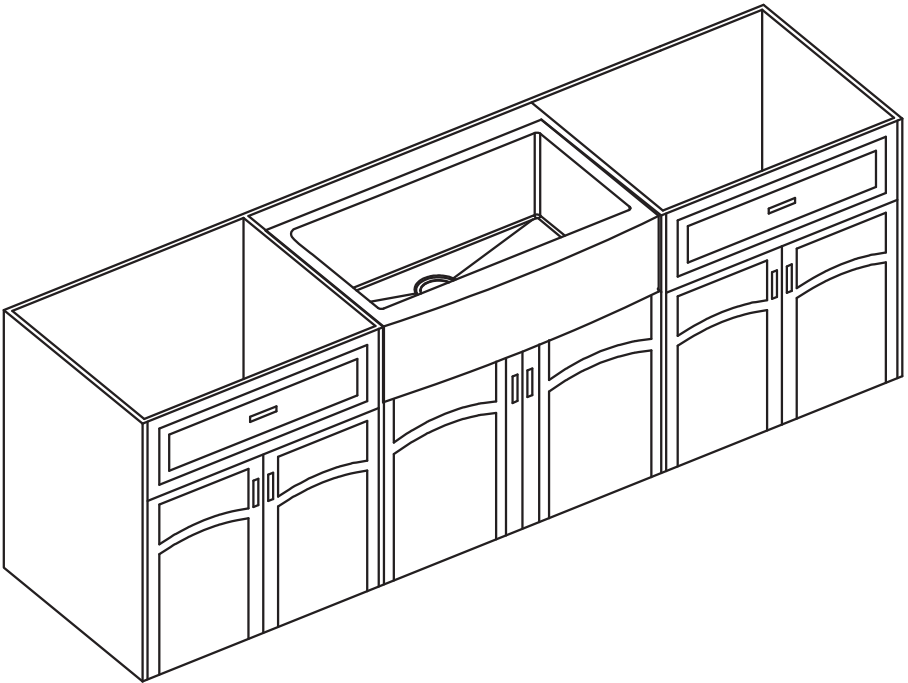
- Measure height of apron front. Add  $1/16''$  to the dimension when you mark base cabinet front cutout. Use jigsaw to cut



### 3. Install Sink

---

- Place sink in opening. The weight of sink should be sustained by the built supports
- Make sure sink is leveled from front to back and side to side
- Uses silicone to fill in gaps where necessary



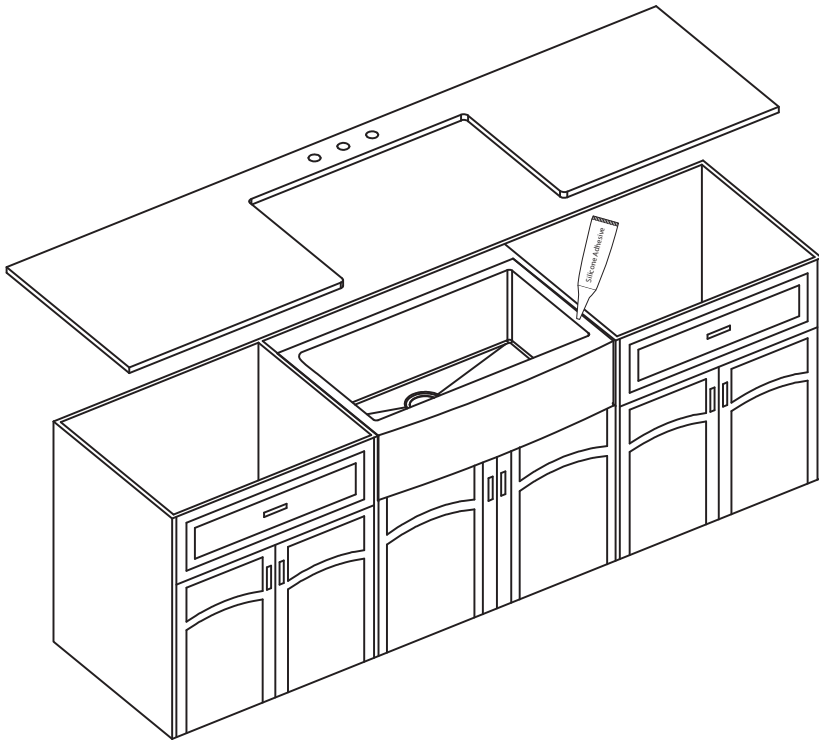


## 4. Cut Countertop

---

- Use a bead of silicone (or preferred adhesive) around the rim of the sink. Check the alignment of the sink to the cutout in the countertop. Place countertop cutout hole over sink and press firmly

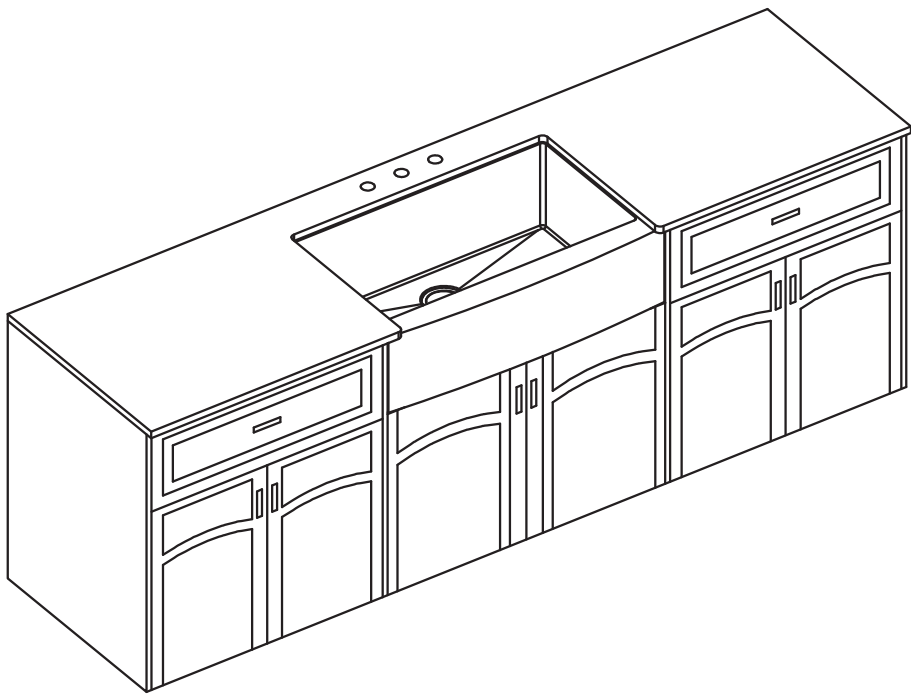
**Installer Tip:** Use acetone or rubbing alcohol to remove any excess sealant



## 5. Installing Plumbing Fixtures

---

- Connect drain, trap to drain and water supply connections to the faucet according to manufacturer's instruction.
- Run water into sink and check for leaks



**Codes/Standards Applicable:**



**HELP LINE**

---

REGISTER YOUR PRODUCT TODAY

**Receive** Proof of Ownership

**Access** Customer Care & Installation Help

**Get** Exclusive Offers & Promotions

We're always looking for ways to improve.

