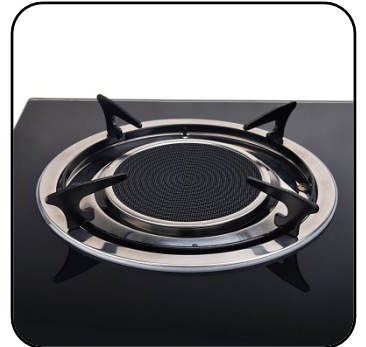




GLASS TOP TWO-STOVE INFRARED BURNER

ITEM: 95543

Please check if you are having two Racks before Using.



OWNER'S MANUAL AND SAFETY INSTRUCTIONS

SAVE THIS MANUAL: KEEP THIS MANUAL FOR SAFETY WARNINGS, PRECAUTIONS, ASSEMBLY, OPERATING, INSPECTION, MAINTENANCE AND CLEANING PROCEDURES. WRITE THE PRODUCT'S SERIAL NUMBER ON THE BACK OF THE MANUAL NEAR THE ASSEMBLY DIAGRAM (OR MONTH AND YEAR OF PURCHASE IF PRODUCT HAS NO NUMBER)

FOR QUESTIONS PLEASE CALL OUR CUSTOMER SUPPORT: 909.628.0880 MON-FRI 9AM TO 3PM PST

IMPORTANT SAFETY INFORMATION



GENERAL SAFETY WARNINGS

Read all these instructions for use carefully. Familiarize yourself with the appliance before connecting it to a gas cylinder. Keep these instructions for future reference. This instruction manual contains important information necessary for the proper assembly and safe use of the appliance. Follow all warnings and instruction when using the appliance. If you have questions about assembly, operation, servicing or repair of this product, please call Customer Service at 909.628.0880.

FOR YOUR SAFETY

If you Smell gas:

1. Do not attempt to light appliance.
2. Extinguish any open flame.
3. Disconnect from the fuel supply.

FOR YOUR SAFETY

Do not store or use gasoline or other liquid with flammable vapors in the vicinity of this or any other appliance.

FOR YOUR SAFETY

Never cook food over 30kgs!!!

CARBON MONOXIDE HAZARD

- This appliance can produce carbon monoxide which has no odor.
- **USE EXTREME CAUTION:** Using it in an enclosed space can kill you.
- **NEVER** use this appliance in an enclosed space such as a camper, tent, car or home.
- This stove is a combustion appliance. All combustion appliances produce carbon monoxide (CO) during the combustion process. This product is designed to produce extremely minute, non-hazardous amounts of Co if used and maintained in accordance with all warnings and instructions. **DO NOT** block air flow into or out of the stove.
- Carbon Monoxide (CO) poisoning produces flu-like symptoms, watery eyes, headaches, dizziness, fatigue and possibly death, You can't see it and you can't smell it. It's an invisible killer. If these symptoms are present during operation of this product get fresh air immediately.
- For outdoor use only.

EXPLOSION FIRE HAZARD

- Never store propane near high heat, open flames, pilot lights, direct sunlight, other ignition sources or where temperatures exceed 120 degrees F(49°C).
- Propane is heavier than air and can accumulate in low places. If you smell gas, leave the area immediately.
- **NEVER** install or remove propane tank while outdoor stove is lighted, near flame, pilot lights, other ignition sources or while outdoor stove is hot to touch.
- During operation, this product can be a source of ignition. Never use the stove in spaces that contain or may contain volatile or airborne combustibles, or products such as gasoline, solvents, paint thinner, dust particles or unknown chemicals. Minimum clearances from combustible materials: 12 inches from the sides & 48inches from the top.
- Provide adequate clearance around air openings into the combustion chamber.
- **NEVER** use inside house, camper, tent, vehicle or other unventilated or enclosed areas. This stove consumes air (oxygen). **DO NOT** use in unventilated or enclosed areas to avoid endangering your life.

IMPORTANT SAFETY INFORMATION

- This product is fueled by propane gas. Propane gas is invisible, odorless, and flammable. An odorant is normally added to help detect leaks and can be described as a “rotten egg” smell. The odorant can fade over time so leaking gas is not always detectable by smell along.
- Propane gas is heavier than air and leaking propane will sink to the lowest level possible. It can ignite by ignition sources including matches, lighters, sparks or open flames of any kind many feet away from the original leak. **Use only Propane gas set up for vapor withdrawal.**
- Propane gas should be stored or used in compliance with local ordinances and codes or with ANSI/NFPA 58. **Turn off propane when not in use.**
- **CALIFORNIA PROPOSITION 65: WARNING:** This fuel, and by products of combustion of this fuel, contain chemicals known to the state of California to cause cancer, birth defects, or other reproductive harm.
- Keep all connections and fittings clean. Inspect propane cylinder and stove propane connections for damage before attaching.
- During set up, check all connections and fittings for leaks using soapy water. Never use a flame. Bubbles indicate a leak. Check that the connection is not cross-threaded and that it is tight. Perform another leak check. **If there is still a leak, remove the cylinder and contact Stark Tools for service or repairs.**
- Use as a cooking appliance only. **NEVER** alter in any way or use with any device or part not specifically designed and sold for this product.
- Clean stove frequently to avoid grease accumulation and possible grease fires.
- **NEVER** leave stove unattended when hot or in use.
- **Keep out of reach of children.**
- Propane stoves and appliances are for outdoor use only. They should be placed on a flat, level surface that is sturdy and never near a wall or other obstruction.
- Never store propane near high heat, open flames, pilot lights, direct sunlight, other ignition sources. Minimum clearances from combustible materials: 12 inches from the sides and 48 inches from the top.
- When cooking with oils, fires can happen easily. Use extreme caution when using this stove and never leave it unattended while in use.
- Be sure to provide adequate clearances around air openings into the combustion chamber.

WARNING: Not for home or recreational vehicle use. We cannot foresee every use which may be made of our products. Check with your local fire safety authority if you have questions about use. Other standards govern the use of fuel gases and heat producing products for specific uses. Your local authorities can advise you about these.

- Never refill disposable cylinders.
- Use the preset regulator that came with the stove. Do not attempt to adjust.

During stove set-up, check all fittings for leaks using soapy water. Never use a flame.



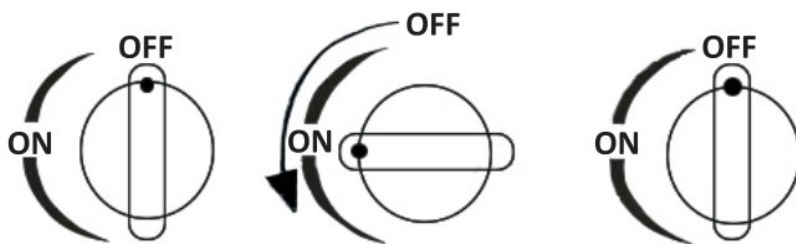
SAVE THESE WARNINGS

OPERATION



OPERATION

1. Slowly open propane tank valve.
2. Press the knob and turn it counterclockwise to the 90 degree **ON** position. When you hear a click, observe the fire. If it is already lit, continue to press the **Range Knob** for 3-4 seconds before letting hands out. Please repeat the above ignition method.



3. When the knob is turned to the 90 degree position, the firepower is the maximum. You can continue to adjust the firepower counterclockwise or clockwise.
4. Turn the **Range Knob** to **OFF** position and you can extinguish the fire.

NOTES:

CONNECTING NEW GAS SOURCE OR STOVE HAS NOT BEEN USED FOR A LONG TIME, THERE MAY BE AIR INSIDE THE HOSE. YOU MAY NOT IGNITE THE STOVE AT THE FIRST TIME. AT THIS TIME, THE OPERATION CAN BE REPEATED TILL AIR INSIDIE THE HOLE IS EXHAUSTED. NEVER PUT THE HEAD CLOSE TO THE BURNER WHEN IGNITION TO AVOID ACCIDENTS.

TROUBLESHOOTING

PROBLEM	POSSIBLE CAUSE	SUGGESTED ACTION
IGNITION ISSUES	Gas tank valve is closed	Open the Gas tank valve
	Hose is blocked or out of shape	Clean or change the hose
	Air inside the hose	Repeat ignition until air is pushed out of the hose
	No gas inside the gas tank	Change with a new gas tank
GAS LEAK	Hose isn't connecting or is broken.	Reconnect or change out the hose
	Range Knob is not in the OFF position	Put the Range Knob into the OFF position

OF NOTE

PLEASE READ THE FOLLOWING CAREFULLY

THE MANUFACTURER AND/OR DISTRIBUTOR HAS PROVIDED THE PARTS LIST AND ASSEMBLY DIAGRAM IN THIS MANUAL AS A REFERENCE TOOL ONLY. NEITHER THE MANUFACTURER OR DISTRIBUTOR MAKES ANY REPRESENTATION OR WARRANTY OF ANY KIND TO THE BUYER THAT HE OR SHE IS QUALIFIED TO MAKE ANY REPAIRS TO THE PRODUCT, OR THAT HE OR SHE IS QUALIFIED TO REPLACE ANY PARTS OF THE PRODUCT. IN FACT, THE MANUFACTURER AND/OR DISTRIBUTOR EXPRESSLY STATES THAT ALL REPAIRS AND PARTS REPLACEMENTS SHOULD BE UNDERTAKEN BY CERTIFIED AND LICENSED TECHNICIANS, AND NOT BY THE BUYER. THE BUYER ASSUMES ALL RISK AND LIABILITY ARISING OUT OF HIS OR HER REPAIRS TO THE ORIGINAL PRODUCT OR REPLACEMENT PARTS THERETO, OR ARISING OUT OF HIS OR HER INSTALLATION OF REPLACEMENT PARTS THERETO.

Record Product's Serial Number Here: _____

Note: If product has no serial number, record month and year of purchase instead.

Note: Some parts are listed and shown for illustration purposes only and are not available individually as replacement parts.



SAVE THESE INSTRUCTIONS



Questions, problems, missing parts?

Before returning to your retailer, our exceptional customer service is here to help.

Call Us: 909.628.0880

Email Us: customer@bartonliving.com

Hours of Operation: 9am - 4pm (Monday - Friday)

PRODUCT MADE IN CHINA