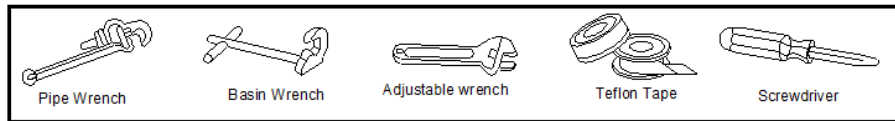


## TOOLS AND MATERIALS



## TUB FAUCET INSTALLATION GUIDE

### BEFORE YOU BEGIN

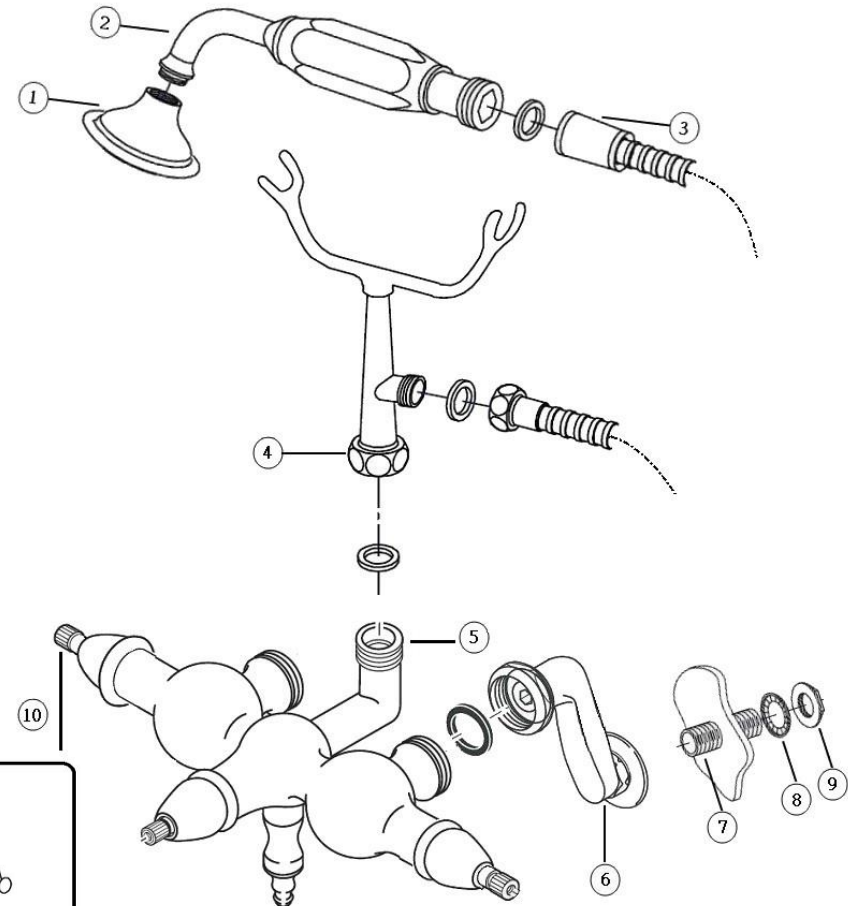
- 1) Shut off water supply.
- 2) Carefully inspect waste and supply tubing for signs of damage.
- 3) Replace waste or supply tubing if necessary

### INSTRUCTIONS

- 1) Apply tape or putty to both ends of hot and cold supply nipples (7). Thread the nipples into risers (6).
- 2) Attach the rubber washer into riser nut (6), connect it with faucet body.
- 3) Attach the rubber washer into cradle nut (4), connect it with faucet body elbow (5).
- 4) Set the faucet onto tub and nipples go through the tub wall holes.
- 6) Slid the metal washer (8) and install the lock nut (9) then tighten with wrench.
- 7) Set the handles (10) on faucet body with screws.
- 8) Assemble the hand shower (1) (2) and hose (3) with rubber washer, then to connect with cradle.
- 9) Connect the water supply lines to riser nipples.
- 10) Turn on main water supply and check all connections for leaking.

### COMPLETE INSTALLATION

Note: All nuts connections, hand tighten first then quarter turn tighten by wrench. Don't over tighten the nut.



Metal Lever



Porcelain Lever

