

Project:

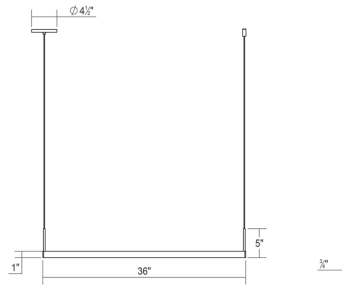
Thin-Line LED Pendant Spec Sheet

SKU: 2816.25-3 Learn more at:
<https://sonnemanlight.com/thin-line-led-pendant>

Description:

A system of minimally scaled LED linear pendants, [uplight/downlight wall bars](#), and [indirect light wall bars](#), Thin-Line is offered in a variety of lengths, finishes, and lighting configurations. Thin-Line pendants are available in single- and double-sided configurations; the single-sided configurations can be installed as a downlight or up-light, providing direct or indirect illumination. Our [Optional Mini Box Canopy](#) is also available for the Thin-Line LED Pendant.

Type #:



Dimensions

Height:	5"
Width:	36"
Length:	0.75"
Canopy/Backplate/Base:	4.5"
Hanging Details:	6' Adjustable Cord
Size:	3' One-Sided
Canopy/Backplate/Base Height:	0.5"

Electrical Specs

Bulb(s) Included?:	Yes
Bulb 1 Type:	Integral LED
Bulb Quantity:	1
Input Voltage:	120VAC
Wattage:	19
Initial Lumens:	1110
Delivered Lumens:	670
Color Temperature:	3000K
CRI:	90
Power Supply Type:	Driver
Power Supply Quantity:	1
Power Supply Location:	Remote
Dimming Type:	TRIAC/ELV
Bulb Max Wattage:	19

Installation

Installation:	Licensed electrician required
Sloped Ceiling Compatible?:	Compatible
Minimum Hanging Height:	5.75"
Maximum Hanging Height:	73.75"

Shipping

Carton 1 L x W x H:	39" X 7" X 4"
Carton 1 Gross Weight:	4 LBS

Shade

Shade 1 Material:	Aluminum w/Optical Acrylic
-------------------	----------------------------

Available Finishes

Available Finishes: Bright Satin Aluminum (.16), Satin Black (.25), Satin White (.03)

General Listings

Features:	Damp Rated
Certification:	C-ETL-US
Color/Finish:	Satin Black (.25)
Dark Sky Friendly:	N