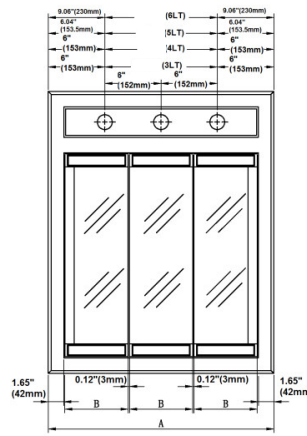


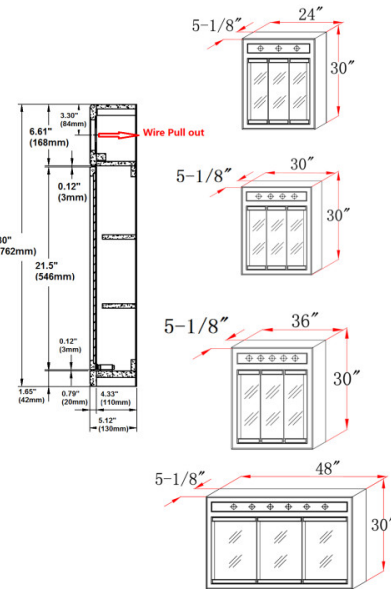
# 4-Light Tri-View Wall Cabinet 30"

## MISC CABINETS

Nutmeg Oak



A	B	LT
24"	6.71"	3
30"	8.74"	4
36"	10.75"	5
48"	14.78"	6



## SPECIFICATIONS

MATERIAL CONSTRUCTION:	Wood	FACE FRAME MATERIAL:	Oak
ASSEMBLY REQUIRED:	No	SIDES MATERIAL:	MDF
TOOLS NEEDED FOR INSTALLATION:	Electric Drill, Screwdriver	BOTTOM MATERIAL:	Particle Board
ASSEMBLED DIMENSIONS:	30" H x 30" L x 5" D	BACK PANEL MATERIAL:	MDF
WEIGHT:	39 lbs.	BACK BRACE MATERIAL:	MDF
NUMBER OF DOORS:	3	GLASS STYLE:	Beveled Edges
DOOR MATERIAL:	Mirror	LIGHTED:	Yes
NUMBER OF SHELVES:	2	QTY OF LAMPS:	4
ADJUSTABLE SHELVES:	No	POWER SOURCE:	AC/DC
SHELF MAX WEIGHT CAPACITY:	10 lbs.	MOUNTING HARDWARE INCLUDED:	No
SHELF WIDTH:	28.7"	MOUTING TYPE:	Surface
SHELF THICKNESS:	0.47"		
SHELF MATERIAL:	Particle Board		

WARRANTY: 1-Year limited warranty  
CARB COMPLIANT: CARB Phase 2  
TSCA TITLE IV COMPLIANT: Yes

