

# CONVENIENCE CONCEPTS

## AMERICAN HERITAGE 3 TIER END TABLE

7107159BL

7107159ES

7107159CH

7107159W



### Assembly Instructions

We have designed our furniture with you, the customer in mind. Our clear, easy to follow, step by step instructions will guide you through the project from start to finish. Feel confident that this will be a fun and rewarding project. The final product will be a quality piece of furniture that will go together smoothly and give years of enjoyment.







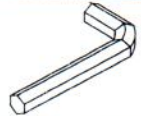


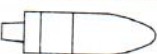

Please do not return to the store

Broken or Missing Hardware?

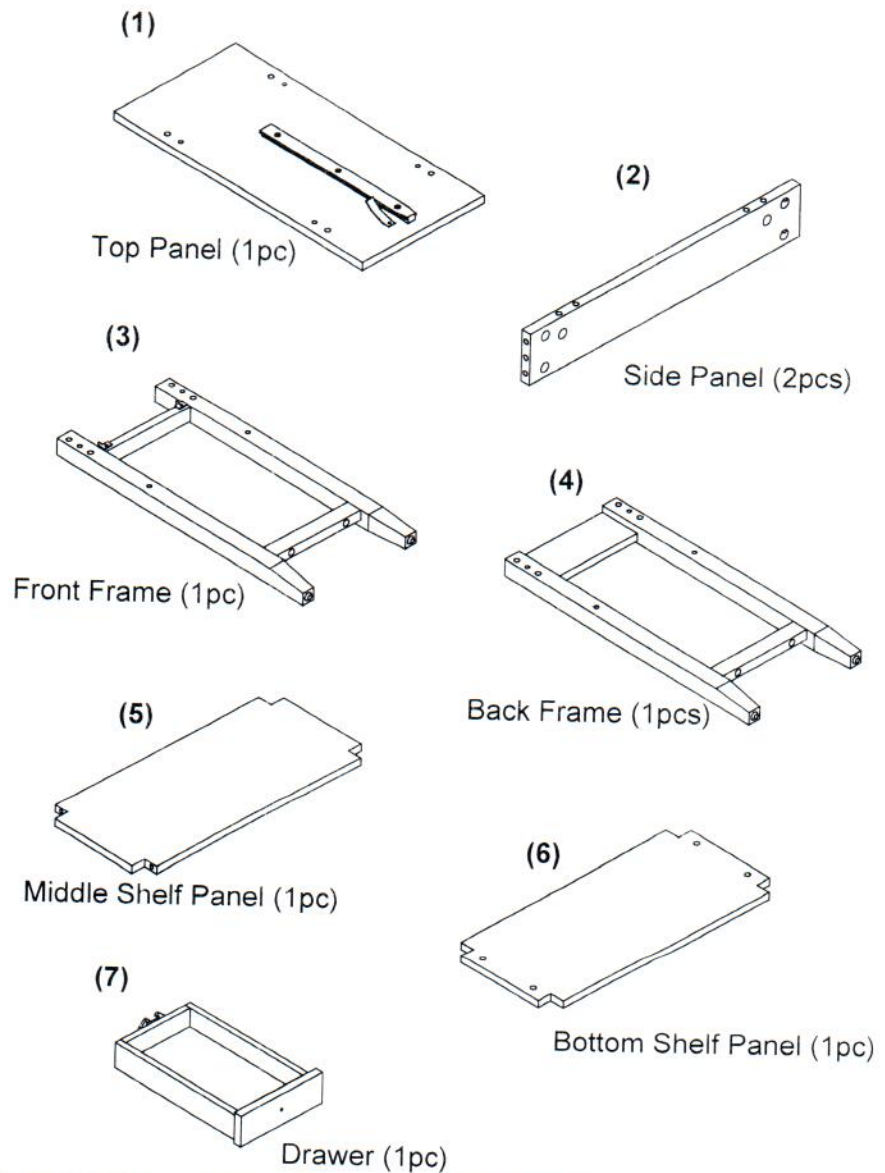
Need help with Assembly?

If you have any questions just call 1-800-468-6447 or email us at  
[parts@convenience-concepts.com](mailto:parts@convenience-concepts.com)

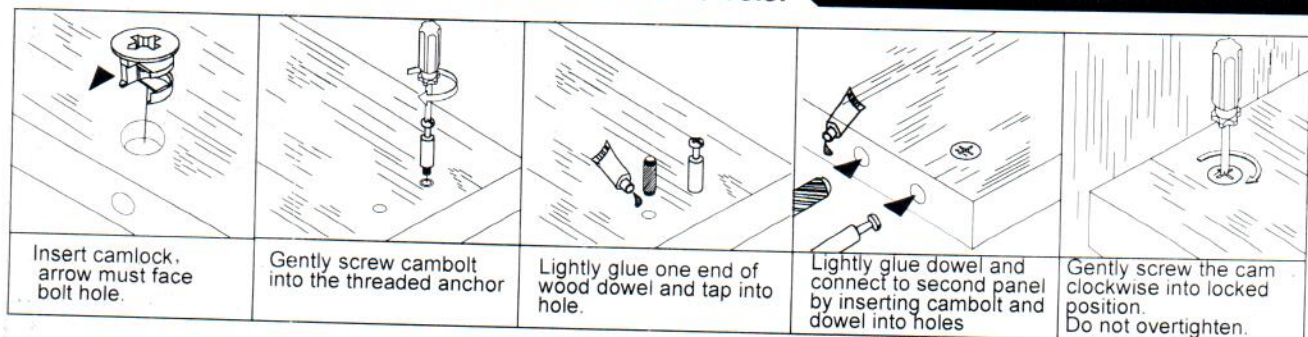
## Hardware List

<b>A</b>	
Camlock (12pcs)	
<b>B</b>	
Cambolt (12pcs)	
<b>C</b>	
Wood dowel (12pcs)	
<b>D</b>	
Allen screw (4pcs)	
<b>E</b>	
Allen wrench (1pc)	
<b>F</b>	
Knob(1pc)	
<b>G</b>	
Screw(1pc)	
<b>H</b>	
Wood glue(1pc)	
<b>I</b>	
Color sitick (1pc)	

## Part List



## Assembling the unit with camlocks and wood dowels.



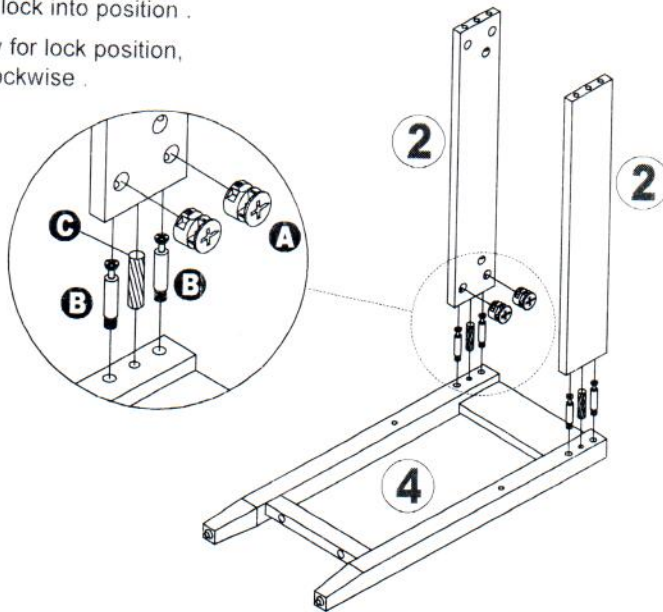
## step1

1. Insert Cambolts (B) and Wood Dowels (C) into Back Frame (4) and place Camlocks (A) into Side Panel (2).  
 \*\*Arrow on Camlock Faces outward Opening\*\*

2. Attach Side Panel (2) to back Frame (4)  
 Assembly as shown and lock into position.

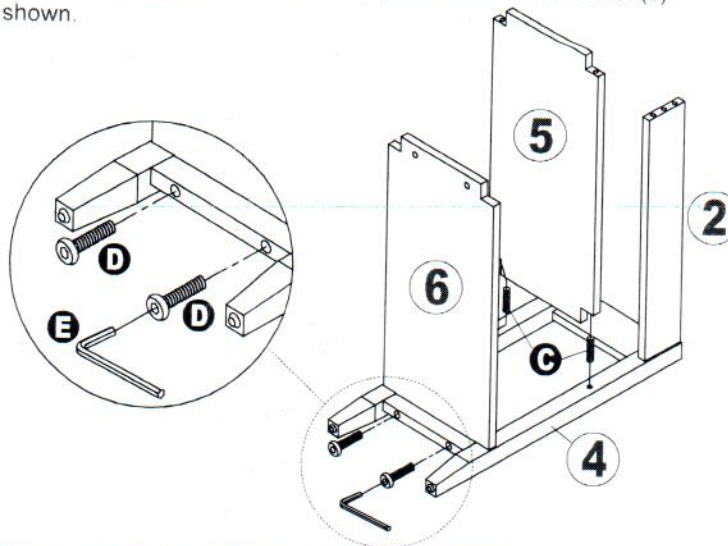
\*\*Turn only 1/4 of the way for lock position, turning Camlock (A) Clockwise.

\*\* Do Not Overtighten.



## step2

1. Insert Wood Dowels (C) into Back Frame (4).  
 2. Attach Middle Shelf Panel (5) and Bottom Shelf Panel (6) to Back Frame (4)  
 Assembly Using care, not to bend.  
 3. Using Allen Wrench (E) fasten Allen Screws (D) to Bottom Shelf Panel (6)  
 Assembly as shown.





### step3

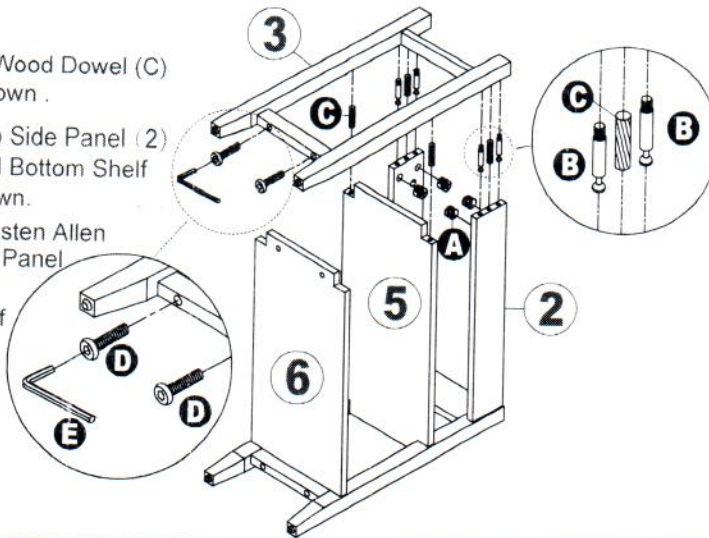
1. Insert cambolts (B) and Wood Dowel (C) into Front Frame (3) as shown.

2. Attach Front Frame (3) to Side Panel (2) Middle Shelf Panel (5) and Bottom Shelf Panel (6) Assembly as shown.

3. Using Allen Wrench (E) fasten Allen Screws (D) to Bottom Shelf Panel (6) Assembly as shown.

\*\*Turn only 1/4 of the way of for lock position, turning Camlocks (A) Clockwise.

\*\*Do Not Overtighten



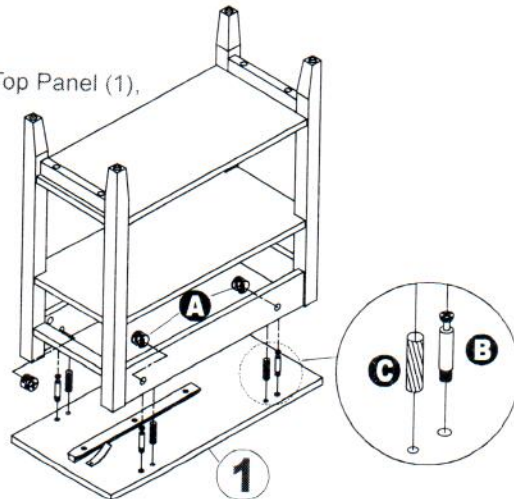
### step4

1. Insert wood Dowels (C) ,Cambolts (B) intoTop Panel (1), and insert Camlock (A) to Side Panel (2).

2. Attach Top Panel (1) to Frame Assembly.

\*\*Turn only 1/4 of the way for lock position, turning Camlocks (A) Clockwise.

\*\* Do Not Overtighten .



### step5

1. Screw Knob (F) into drawer front panel.

2. Insert Drawer (7) into groove of Side Panel (2) as shown.

