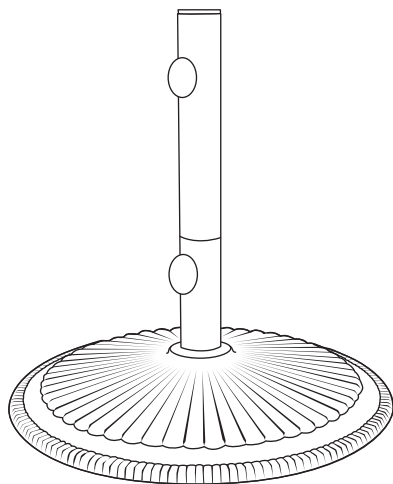


50 lbs. Cast Iron Base



Instruction Manual

Thank you for your purchase of Cast Iron Base.

Please remove all contents from the package, inspect and review checklist.

CORAL BASE CHECKLIST

A - Upper Stem 11 in.

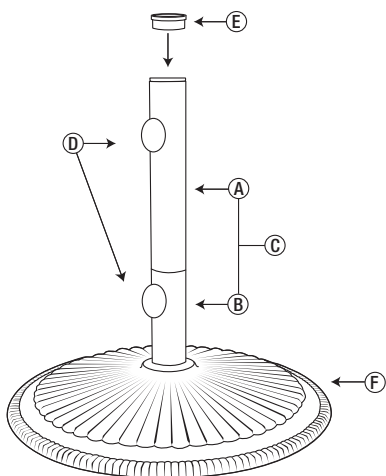
D - Knobs (2)

B - Reduced Stem 6.5 in.

E - Reducer

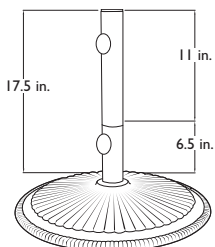
C - Full Stem 17.5 in.

F - Base



Set Up

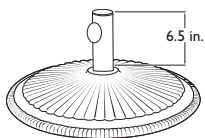
Turn base stem clockwise  until fully tightened.



Recommended for free-standing



Free-standing application



Reduce stem for
under the table use

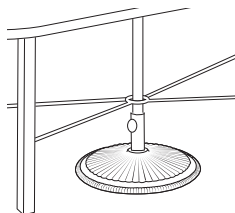
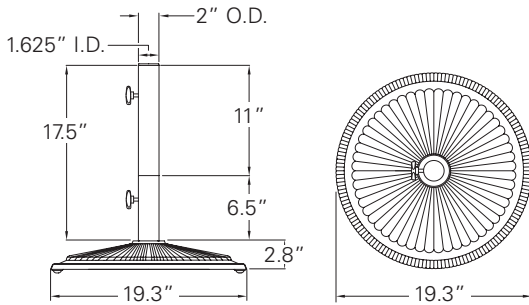


Table application

Dimensions



WARRANTY:

CAUTION: HANDLE WITH CARE

- To reduce personal injury and damage, read and follow this Assembly and Operation information.
- Close the umbrella in windy conditions or when a storm approaches. Never allow the umbrella to flap in the wind; this could damage the canopy.
- Do not leave open umbrella unattended.
- Do not allow children to play on or with the base.