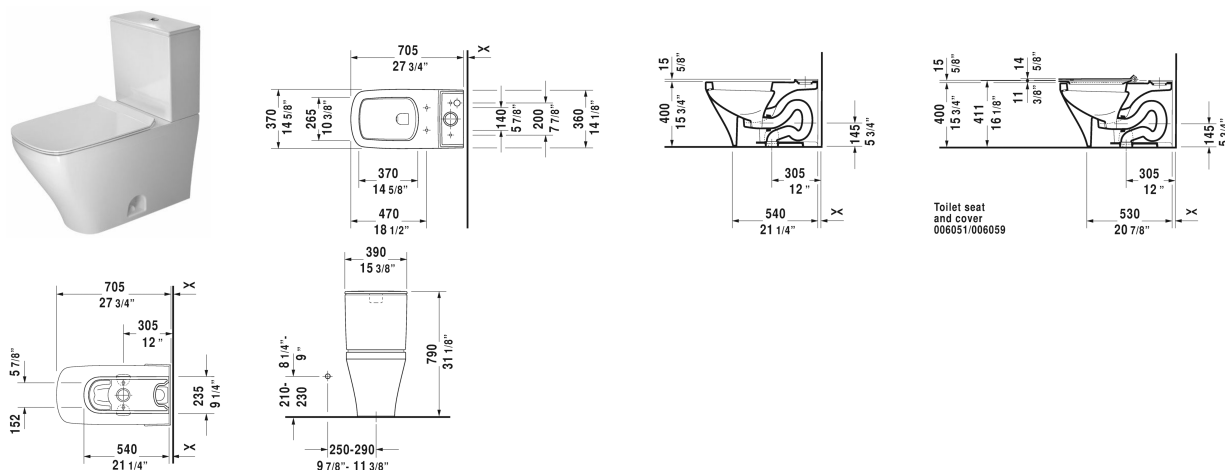


## DuraStyle Two-Piece toilet # 216001..00 / 216001..85 / 216001..85

| < 14 1/8" Inch > |



Two-Piece toilet	Dimension	Weight	Order number
(without tank), syphonic, 12" rough-in, vertical outlet, cUPC® listed*			
<b>Colors</b>			
00 White 20 HygieneGlaze (an antibacterial ceramic glaze that provides almost indefinite effectiveness)			
<b>Variant</b>			
◆ 1.32/0.92 gpf	14 1/8" x 27 1/2" Inch	92 lb	216001..00
◆ 1.28 gpf	14 1/8" x 27 1/2" Inch	92 lb	216001..85
◆ 1.28 gpf	14 1/8" x 27 1/2" Inch	92 lb	216001..85
<b>Infobox</b>			
* Complies with following standards: ASME A112.19.2/CSA B45.1			
Sanitary ceramics with the special WonderGliss surface finish will remain clean and attractive-looking for a long time to come. When ordering WonderGliss please add a "1" as eleventh digit to the model number.			
Mounting set for One-Piece and Two-Piece toilets, outlet 3/8" - male thread, wall connection 1/2" - female thread, 1/2", North American version	17 3/4" Inch	1.1 lb	001417
<b>Suitable products</b>			
Toilet seat and cover removable, elongated, hinges stainless steel, without slow close,			006051

**DuraStyle Two-Piece toilet # 216001..00 / 216001..85 / 216001..85**

|< 14 1/8" Inch >|

Toilet seat and cover removable, elongated, hinges stainless steel, with slow close,		006059
Tank for bottom left supply, cUPC® listed*, 15 3/8" x 6 3/4" Inch	15 3/8" x 6 3/4" Inch	093520

*All drawings contain the necessary measurements which are subject to standard tolerances. They are stated in inch & mm and are non-binding. Exact measurements, in particular for customized installation scenarios, can only be taken from the finished ceramic piece.*