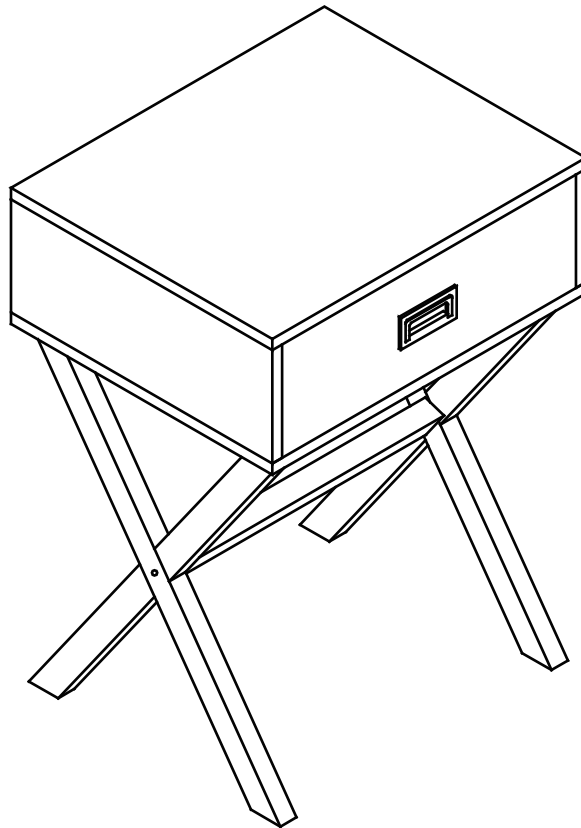


End Table



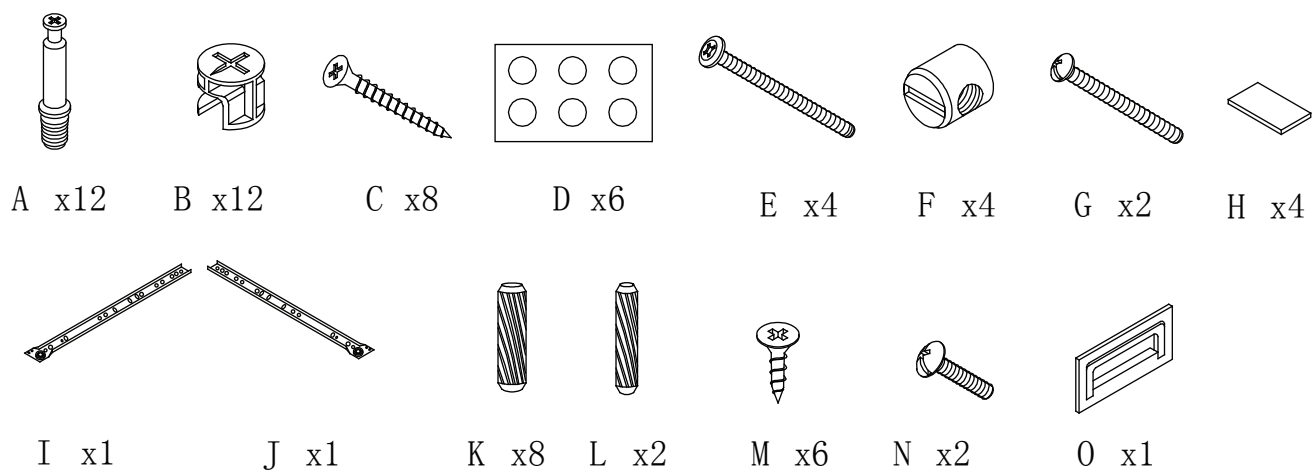
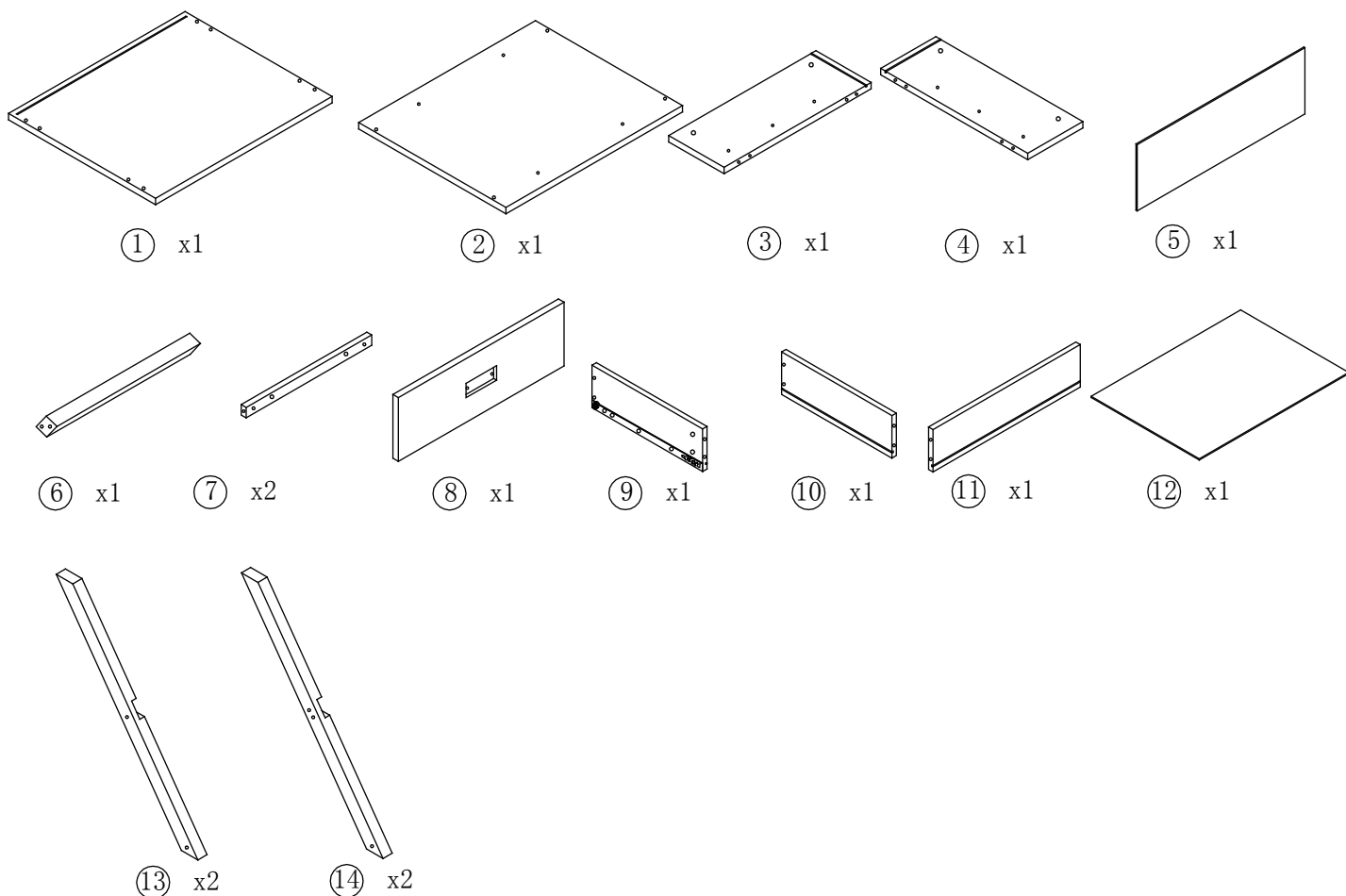
Assembly instructions

We have designed our furniture with you, the customer in mind. Our clear, easy to follow step by step instructions will guide you through the project from start to finish.

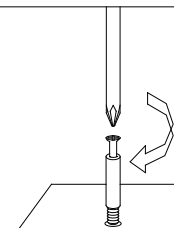
Feel confident that this will be a fun and rewarding project. The final product will be a quality piece of furniture that will go together smoothly and give years of enjoyment.



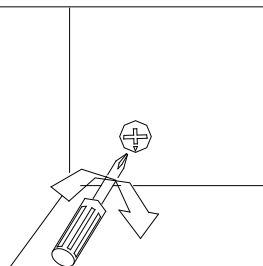
Please do not return to the store
Broken or missing Hardware?
Need help with Assembly?
If you have any questions just call or email us



Assembling the unit with cams and wood dowels.



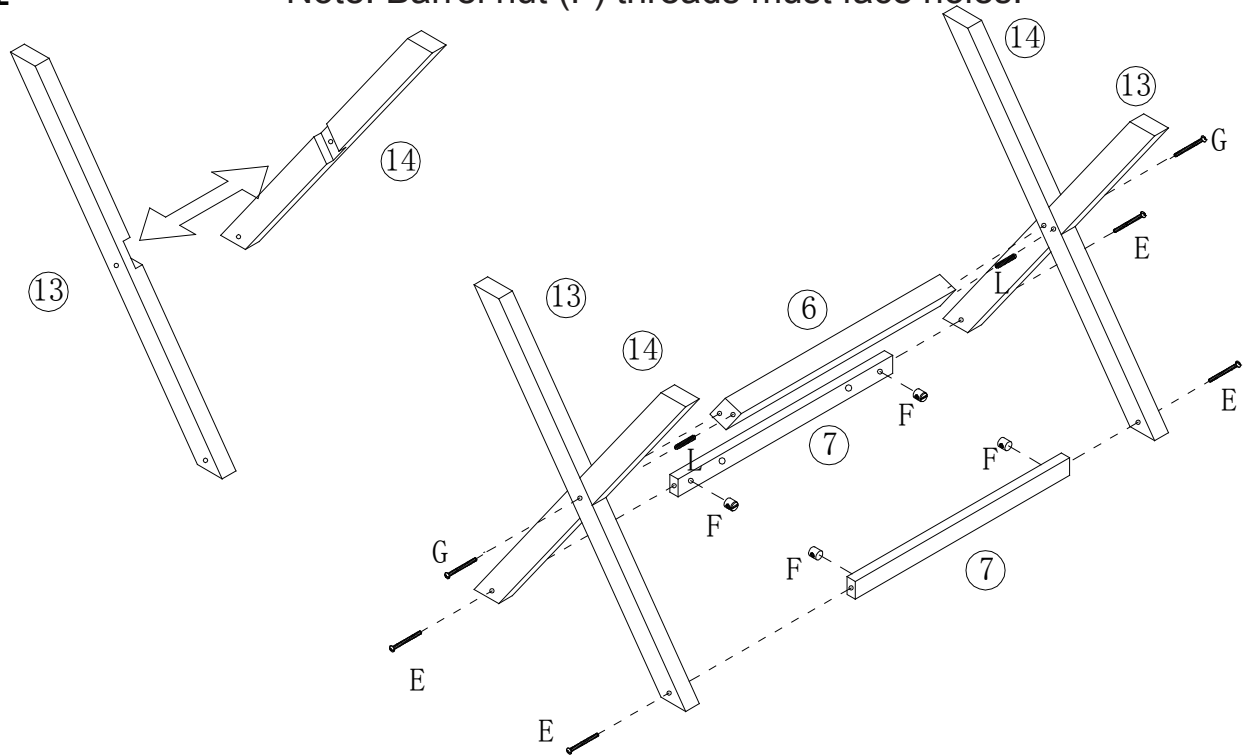
Gently screw cam bolt into the threaded anchor.



Insert cam lock with arrow pointing Toward hole
Screw the cam lock gently into locked position.

Step 1

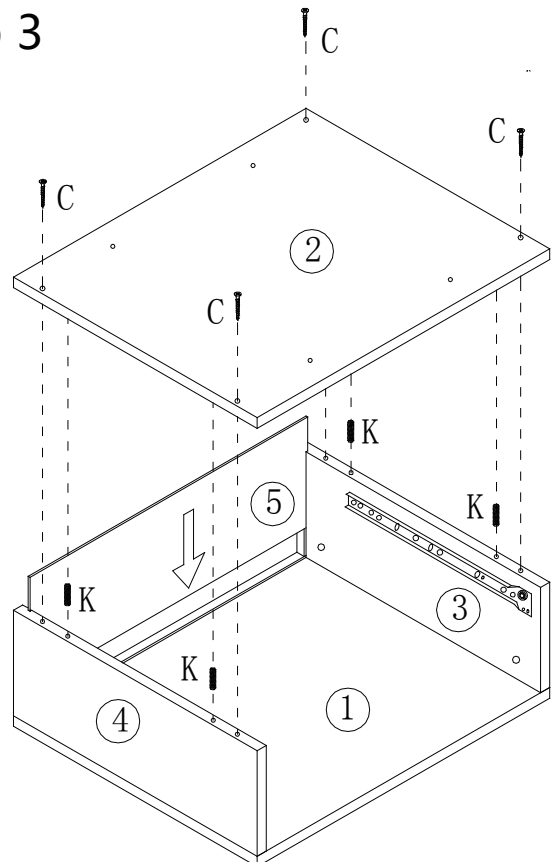
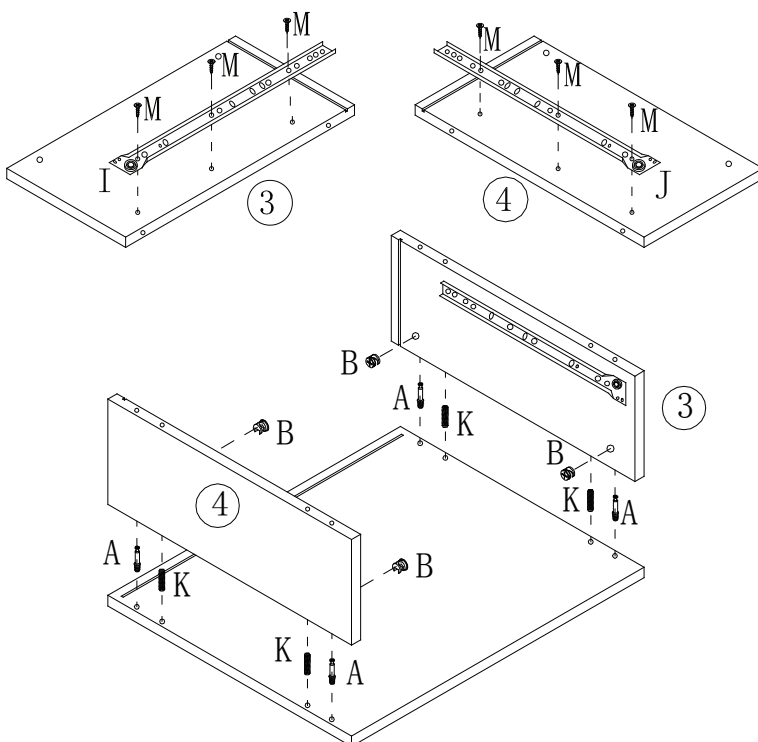
Note: Barrel nut (F) threads must face holes.



- 1 Loosely connect legs (13) to (14)
- 2 Attach leg assemblies to support bar (6) using dowels (L) and screws (G).
3. Attach support bars (7) to assembly using bolts (E) and Barrel nuts (F).

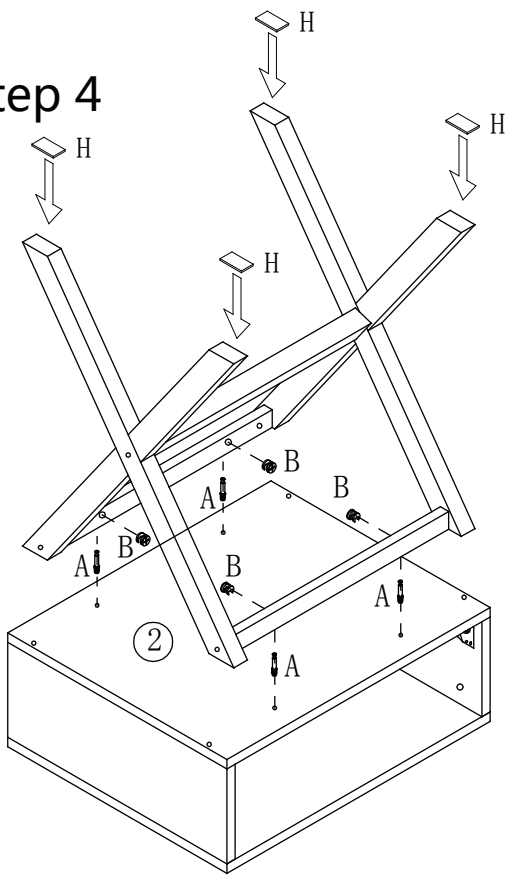
Step 2

Step 3



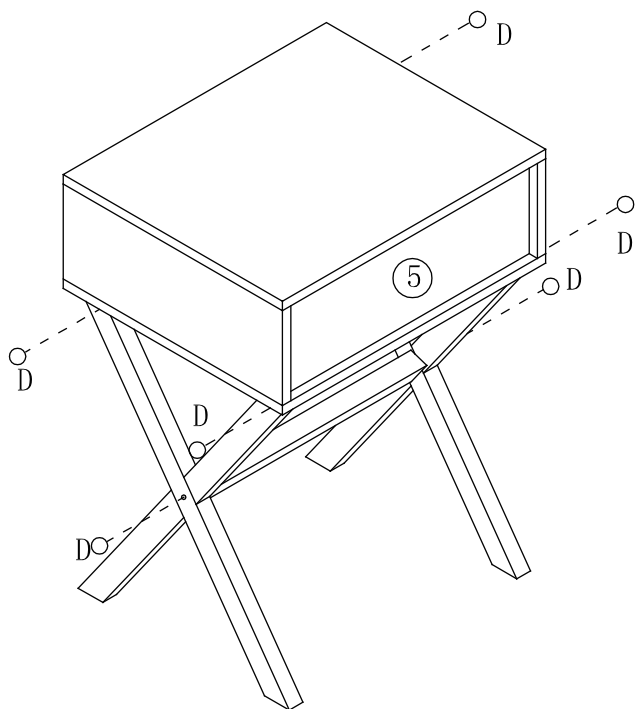
1. Attach side rails (I) and (J) to panels (3) and (4), respectively, using screws (M) with rollers on opposite end of slots.
2. Attach panels (3) and (4) to panel (1) using Dowels (K), cam locks (B) and cam bolts (A), as shown.
3. Slide back panel (5) into slots of panel (1), (3) and (4).
4. Attach panel (2) to assembly, making sure panel (5) slides into slot of panel (2), using dowels (K) and screws (C).

Step 4



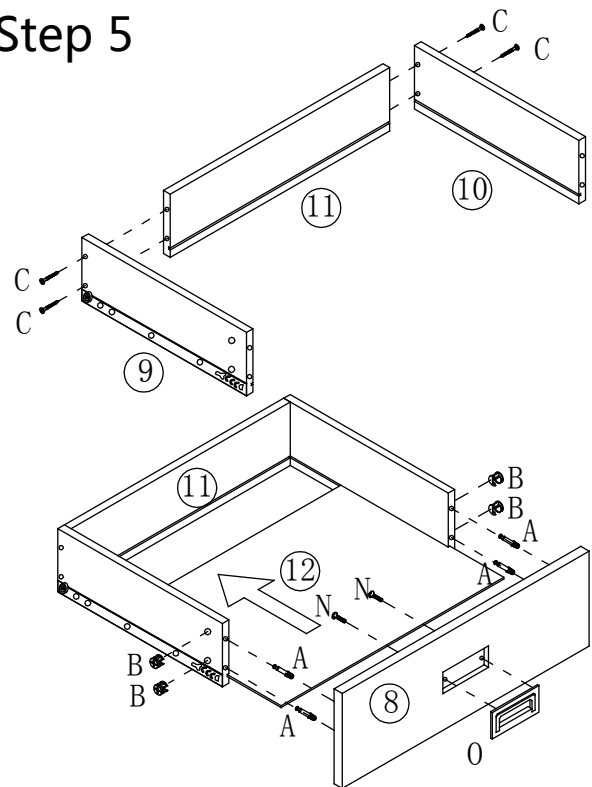
1. Attach leg assembly to panel ② using Cam bolts (A) and Cam locks (B), as shown.
2. Attach pads (H) to bottom of legs ⑬ and ⑭

Step 6



1. Place stickers (D) over bolt holes as shown.
2. Carefully slide drawer into unit
3. Enjoy

Step 5



1. Attach panels ⑨ and ⑩ to panel ⑪ with screws (C) as shown.
2. Slide bottom panel ⑫ into slots of panels ⑨, ⑩ and ⑪
3. Attach handle (O) to drawer front ⑧ using small bolts (N). Make sure that slot on back side of ⑧ is at bottom before attaching handle (O).
4. Attach drawer front to drawer assembly using cam bolts (A) and Cam Locks (B), as shown.

