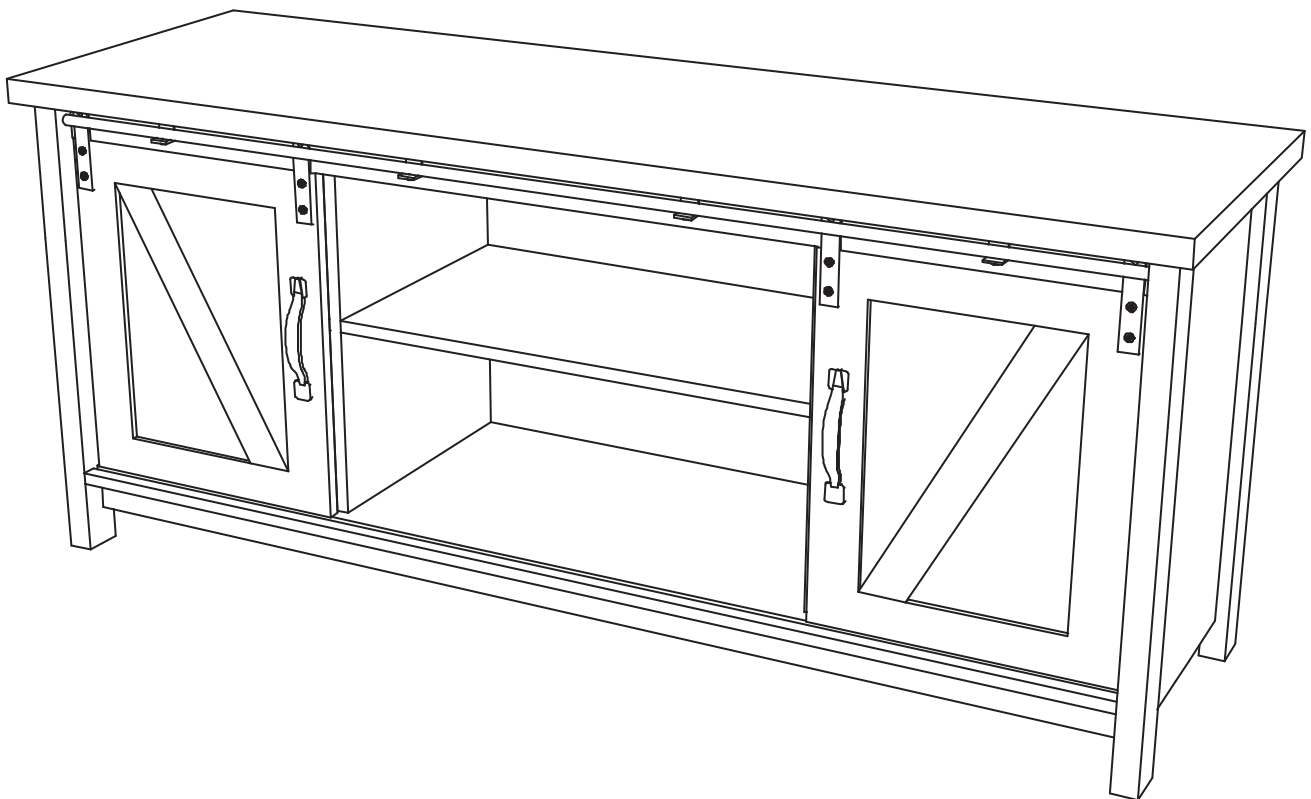


BARN DOOR TV STAND



ASSEMBLY INSTRUCTIONS

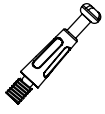

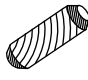


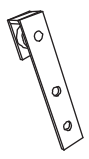
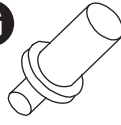
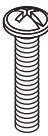


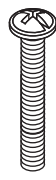
We have designed our furniture with you , the customer in mind . Our clear , easy to follow , step by step instructions will guide you through the project from start to finish . Feel confident that this will be a fun and rewarding project . The final product will be a quality piece of furniture that will go together smoothly and give years of enjoyment .



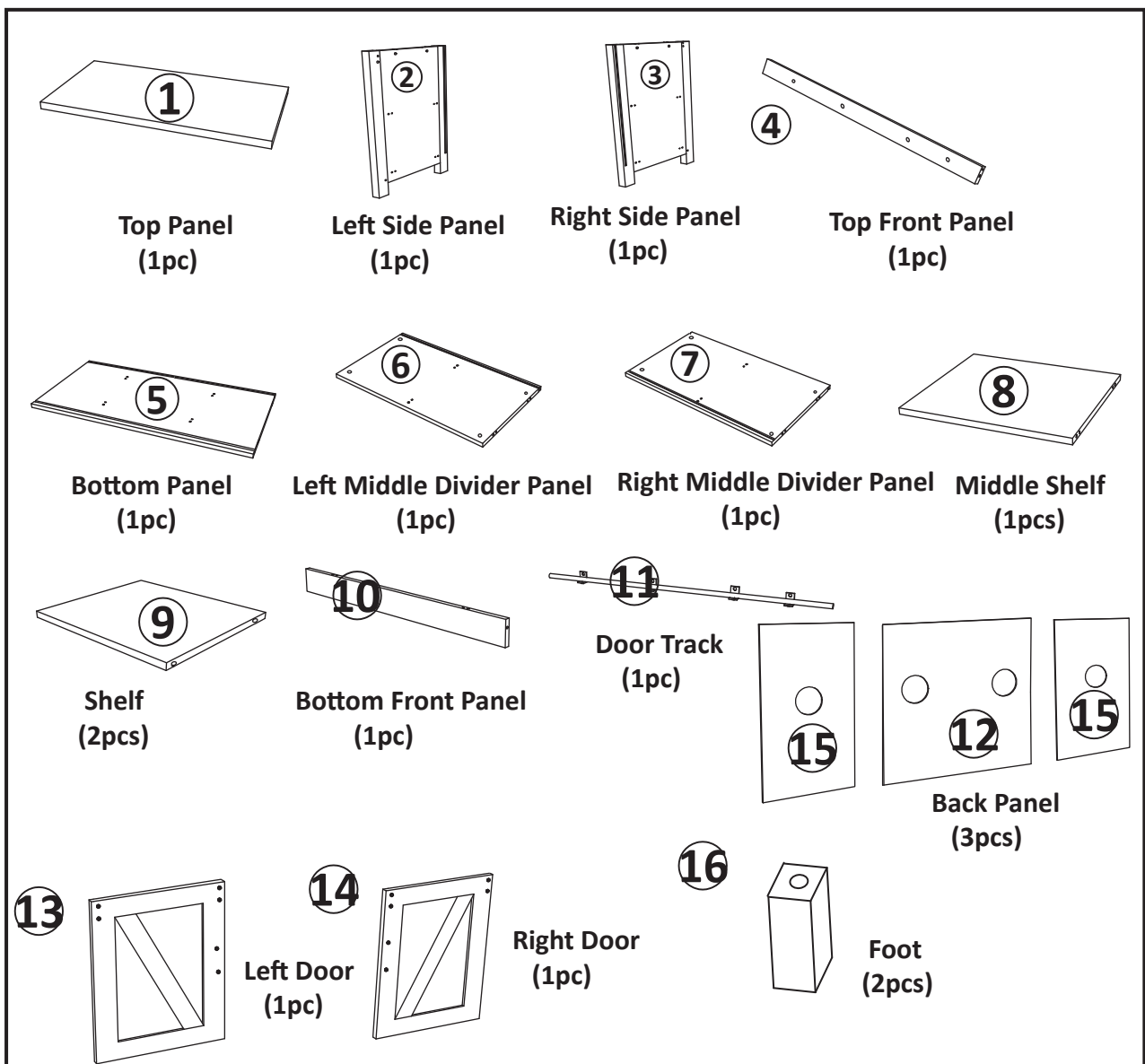
Please do not return to the store
Broken or missing parts?
Need help with assembly?

Our Illinois based customer service team is ready to help with any problems or questions you may have. Please give us a call (Toll Free), or email us.
This product's warranty is only valid through authorized dealers.

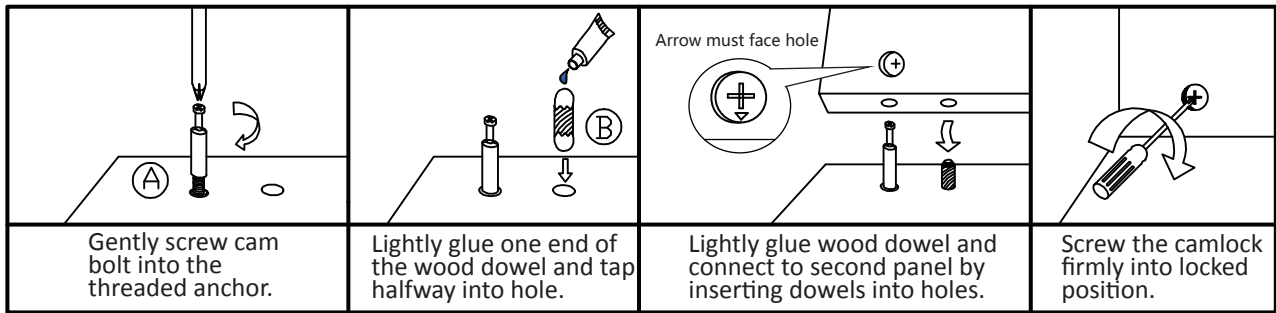
Hardware List

A 	B 	C 	D 	E 	F 
Cambolt (35pcs)	Camlock (35pcs)	Wood dowel (30pcs)	Self-Tapping Screw (12pcs)	Handel (2pc)	Pulley (4pcs)
G 	H 	I 	J 	K 	
Door pin (2pcs)	Handel Screw (4pcs)	Mounting screw (4pcs)	Glue (1pc)	Long screw (2pcs)	

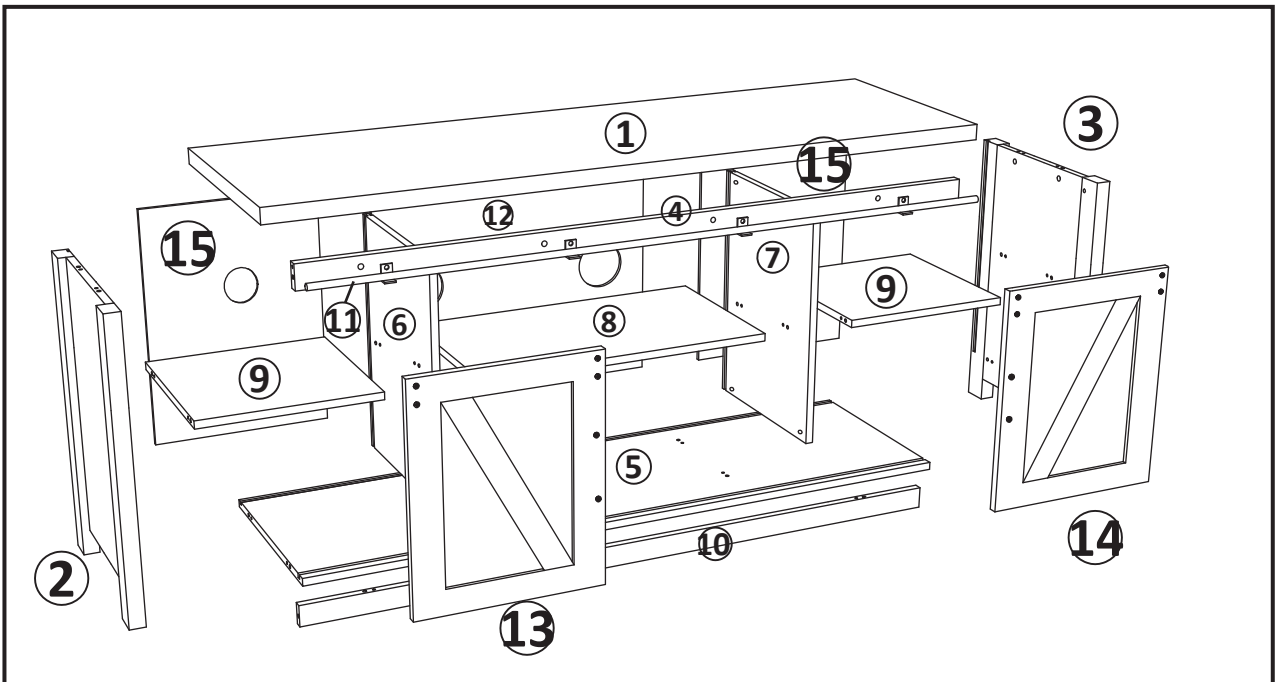
Panel List



Assembling the unit with camlocks and wood dowels.

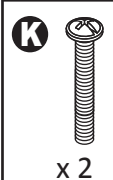
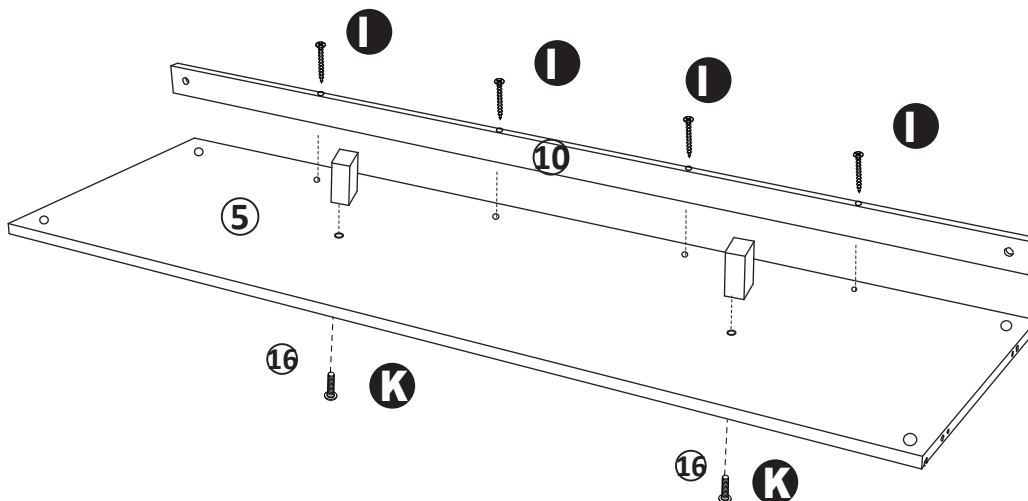


Exploded Views



Step 1

1. Connect bottom front panel **10** to bottom panel **5** with mounting screws (**I**) as shown.
2. Connect feet **16** to bottom panel **5** with long screws (**K**) as shown.

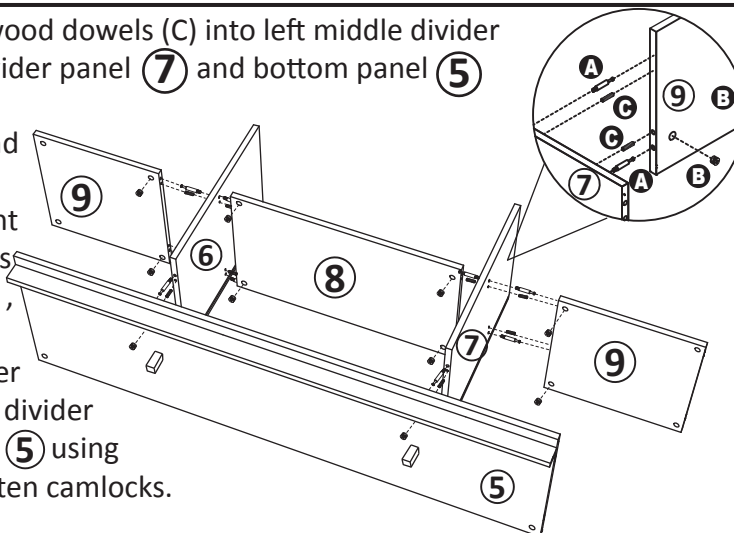


Step 2

1. Screw cambolts (A) and wood dowels (C) into left middle divider panel (6) right middle divider panel (7) and bottom panel (5) as shown .

2. Attach middle shelf (8) and shelves (9) to left middle divider panel (6) and right middle divider panel (7) as shown using camlocks (B) , gently tighten camlocks.

3. Connect left middle divider panel (6) and right middle divider panel (7) to bottom panel (5) using camlocks (B) , gently tighten camlocks.



A
x 12

B
x 12

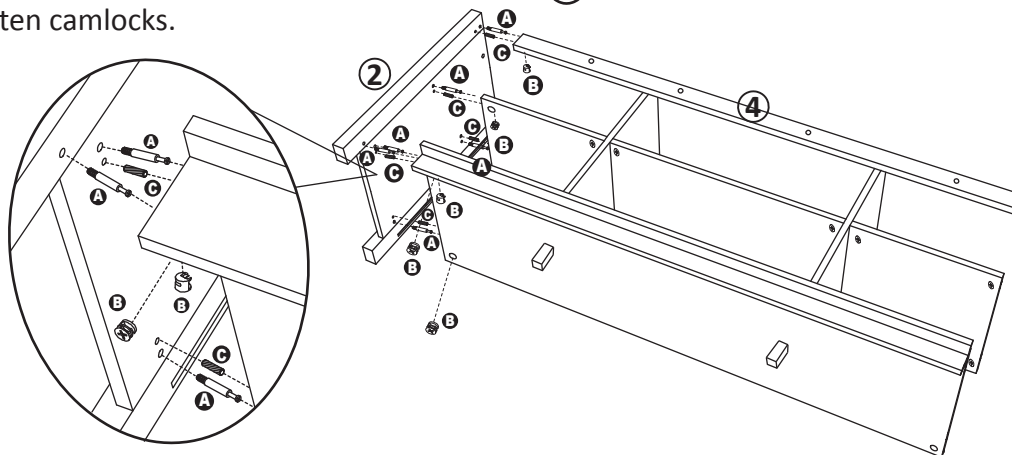
C
x 12

Step 3

1. Screw cambolts (A) and wood dowels (C) into left side panel (2) as shown .

2. Attach left side panel (2) to assembly as shown using camlocks (B) , gently tighten camlocks.

3. Connect top front panel (4) to left side panel (2) using camlocks (B) , gently tighten camlocks.



A
x 6

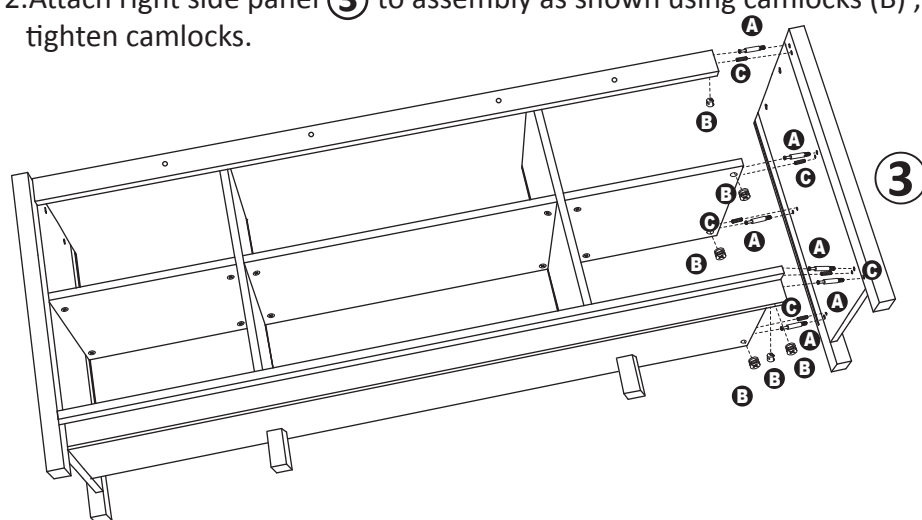
B
x 6

C
x 5

Step 4

1. Screw cambolts (A) and wood dowels (C) into right side panel (3) as shown .

2. Attach right side panel (3) to assembly as shown using camlocks (B) , gently tighten camlocks.



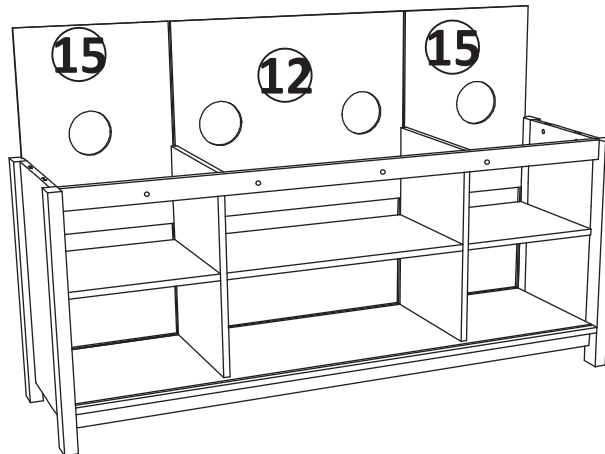
A
x 6

B
x 6

C
x 5

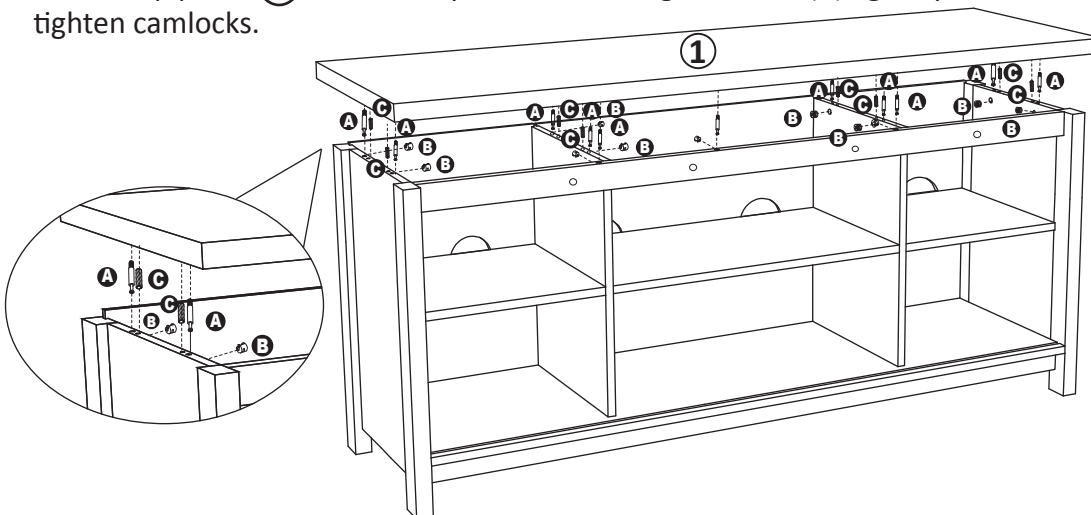
Step 5

1. Stand unit upright .
2. Slide back panel **12** and back panels **15** into assembly as shown.



Step 6

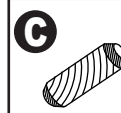
1. Screw cambolts (A) and wood dowels (C) into top panel **1** as shown .
2. Attach top panel **1** to assembly as shown using camlocks (B) , gently tighten camlocks.



x 11



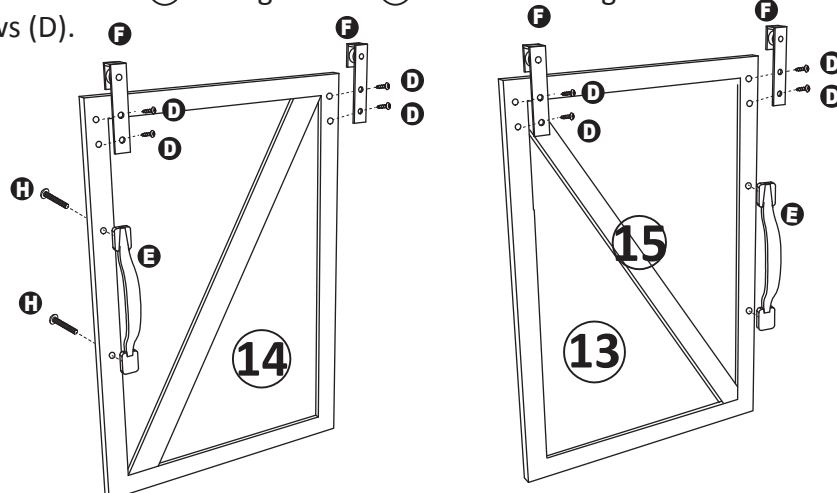
x 11



x 8

Step 7

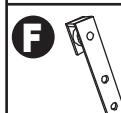
1. Attach handel (E) to left door **13** and right door **14** as shown using handel screws (H).
2. Attach pulley (F) to left door **13** and right door **14** as shown using self-tapping screws (D).



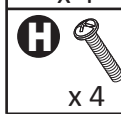
x 8



x 2



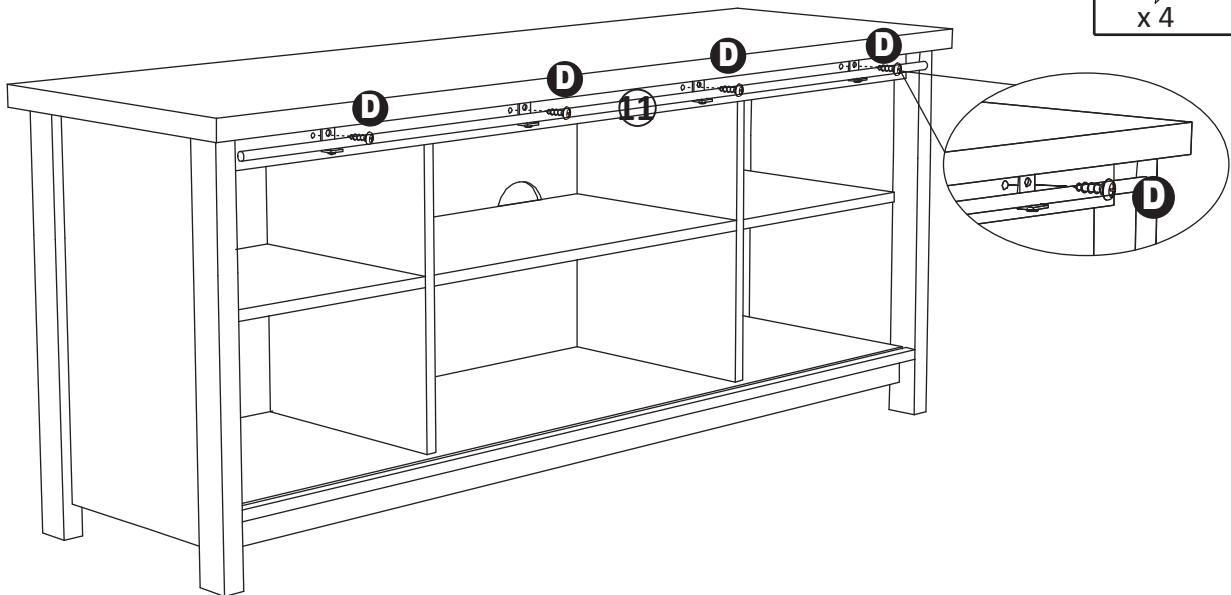
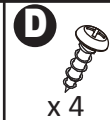
x 4



x 4

Step 8

1. Attach door track **11** to assembly as shown using self-tapping screws (D).



Step 9

1. First Insert door pins (G) into left door **13** and right door **14** as shown.

2. Using a slight angle, carefully place door into unit as shown.

