

**User Manual**

---

4 Gallon Slim Sensor Trash Can (Left or Right Opening)  
(SG04SSL / SG04SSR)



**SG04SSL**  
**Left Opening**



**SG04SSR**  
**Right Opening**

This appliance is not intended for use by persons (including children) with reduced physical, sensory or mental capabilities, or lack of experience and knowledge, unless they have been given supervision or instruction concerning use of the appliance by a person responsible for their safety. Children should be supervised to ensure that they do not play with the appliance.

## About your iTouchless® Trash Can

### **Congratulations! Your new iTouchless trash can is your new best friend at home or the office.**

Our patented touchless sensor technology is safe to use and helps you keep a healthy environment by preventing exposure to the illness-causing bacteria that live on trash can surfaces. We've also added lots of other incredible features, including:

- AbsorbX® Odor Control System keeps your home smelling fresh and clean – your first filter is included!
- VisioSense™ provides a visual cue that the lid is about to close
- Reflex™ technology prevents the lids from closing on your hand
- Trash bag retainer ring prevent a full bag from falling in
- 4 new "C" size Alkaline batteries (not included) can power the lid up to three years
- Air vents at the base ease removal of a full bag

## About the Company

### **iTouchless is the "touch less, do more" company.**

Our technologically advanced waste receptacles and housewares are with you throughout your day – at home and at work – making daily chores quicker, easier, and more hygienic, so you can focus on the things that matter most. Our products are designed by industry professionals who have been inventing innovative smart housewares for decades. Everything we make is rigorously tested to ensure you're getting a high quality product that will work perfectly for years of use.

We also design our products to be as attractive as they are dependable, so you can get the perfect look to match any décor.

#TouchLessDoMore

## Contents of the Box

- Sensor Trash Can Lid
- Brushed Stainless Steel Can Body
- Trash Bag Retainer Ring
- AbsorbX® Odor Filter Compartment
- One (1) AbsorbX Odor Filter (inside the odor filter compartment)\*
- User Manual

*\*See "How to Install or Replace the AbsorbX® Odor Filter" section*

## We're here to help!

If you have any questions or concerns about this product, please contact iTouchless Customer Support for immediate assistance. You can reach us at **1-844-660-7978** or **support@itouchless.com**.

Your 100% satisfaction is our #1 goal!

Go to **itouchless.com/register** to register your product for simple warranty service and to receive product updates and special offers.

**Product Model # SG04SSL / SG04SSR**

**Register  
your  
Product**

Follow us on Facebook® and Instagram® to get news about new product releases, special discounts, and contests.



[www.facebook.com/iTouchless](http://www.facebook.com/iTouchless)



[www.instagram.com/itouchless](http://www.instagram.com/itouchless)

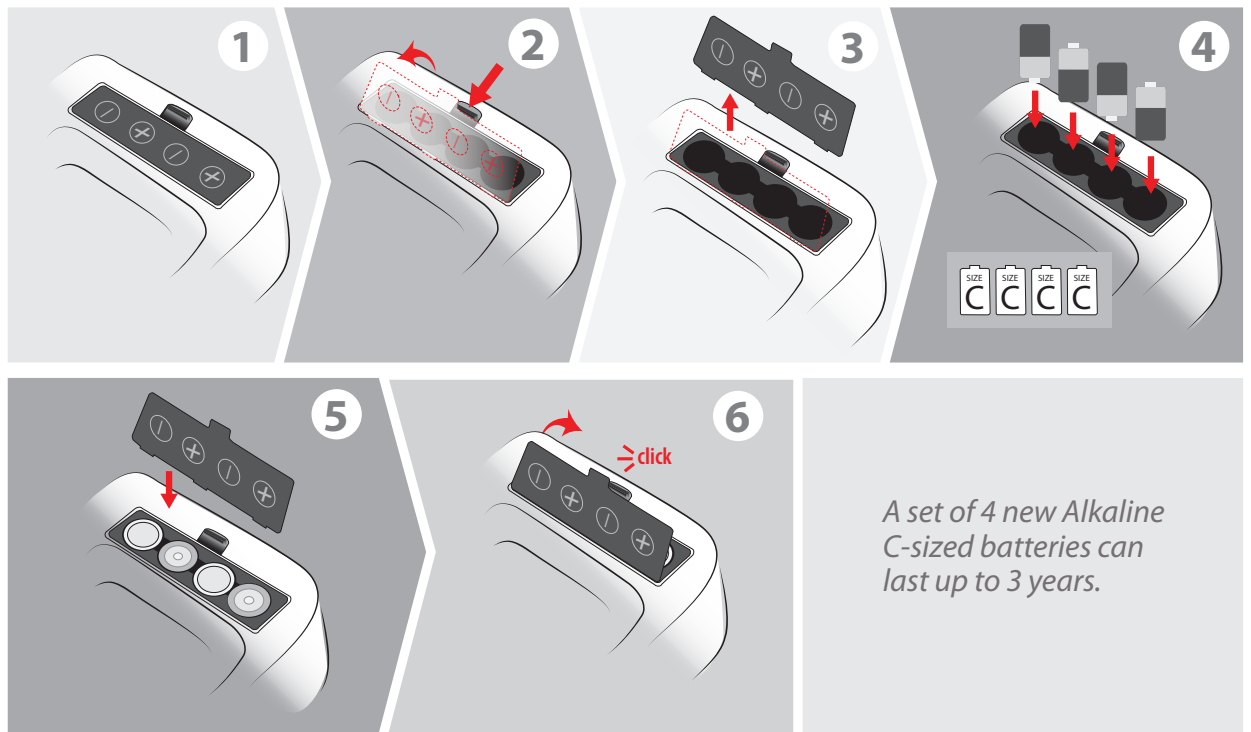
**Get  
Discounts  
and Win  
Prizes**

1. This product is not intended for use by children 12 years of age or younger. Adult supervision is required.
2. Do not submerge the lid in water as it houses the electronic control. You may clean it with a lightly dampened cloth.
3. Clean the trash can body only with products safe for use on stainless steel.
4. Do not press or force the Lid Cover to close. Lid will close automatically after your hand is removed from the sensor zone.
5. Replace batteries immediately when the indication light turns to yellow/amber. This will ensure the lid continues to operate properly.
6. Avoid direct sunlight on the infrared sensor.
7. Ensure there is enough room to operate the trash can without blocking the opening and closing of the lid.
8. Do not overfill the trash bag. It could inhibit lid operation.
9. Automatic parts may not be suitable for small children or pets.

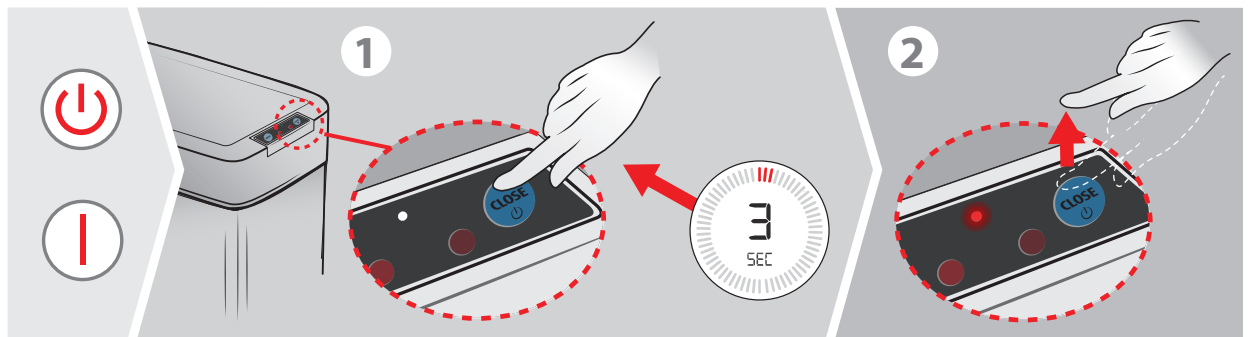
**Attention**

## Insert 4 "C" Size Batteries\*

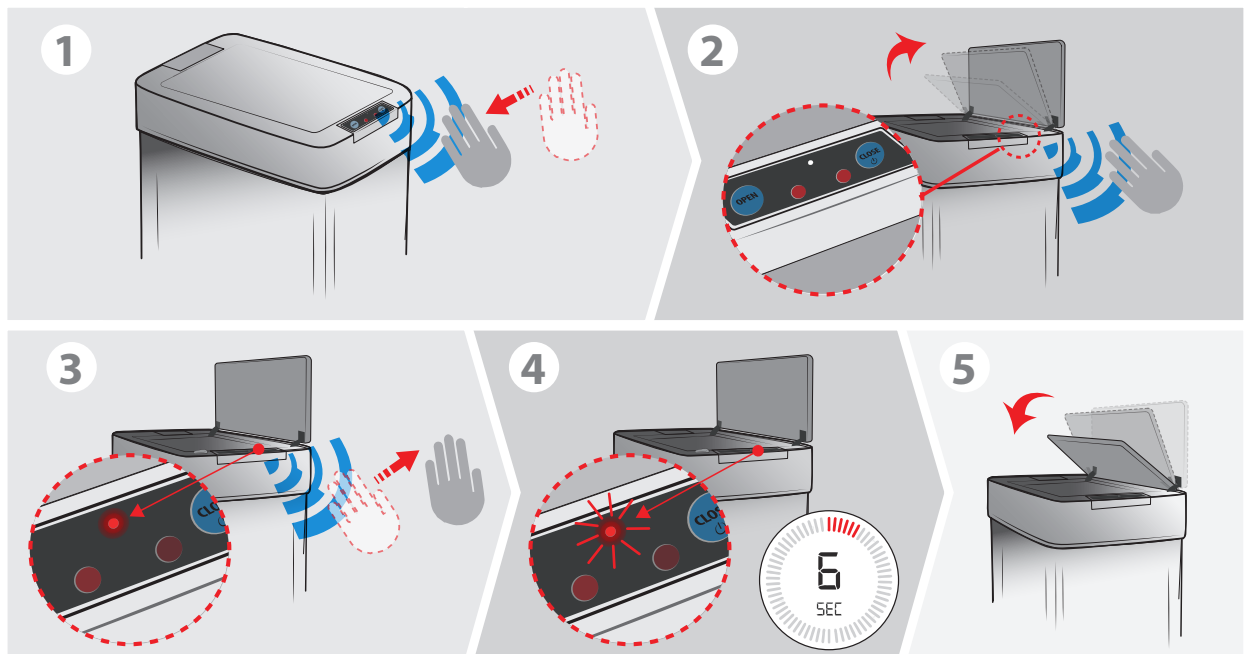
\*not included

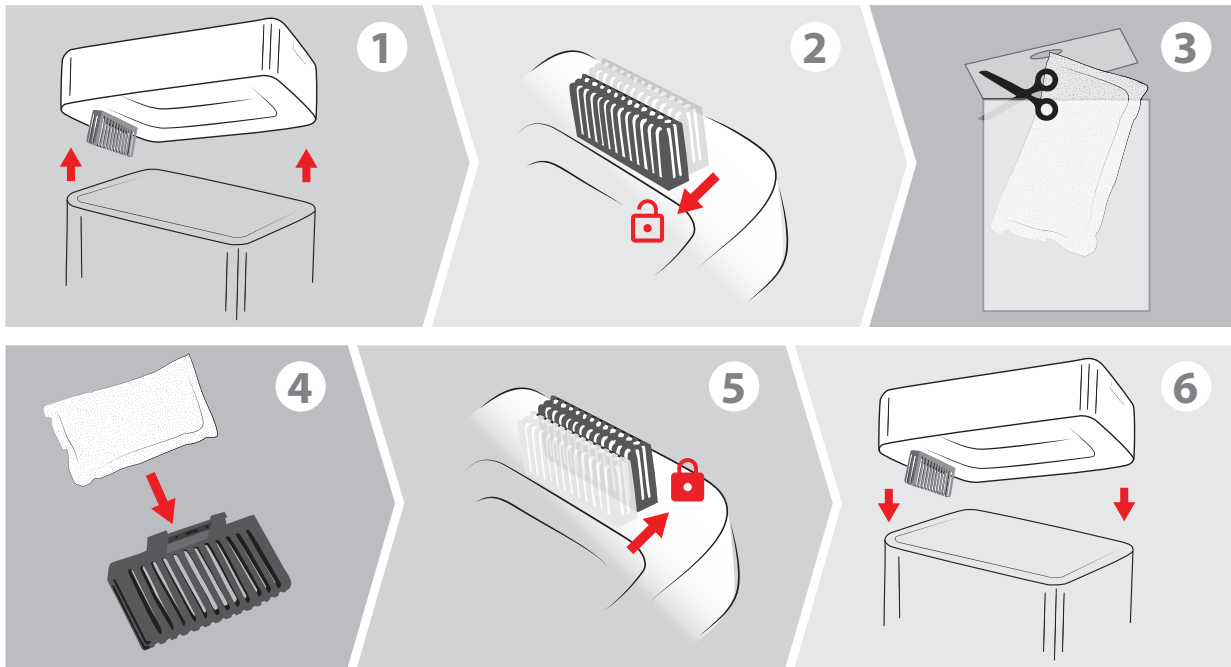


## How to Power On and Off



## Operating the Lid / VisioSense™ Technology





## How to Install or Replace the AbsorbX® Odor Filter\*

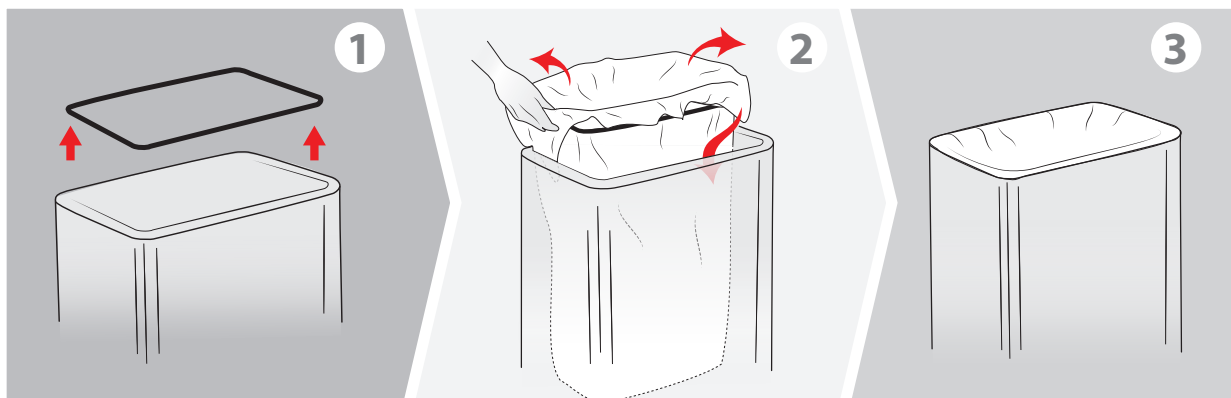
*\*First filter is included*

AbsorbX odor filters utilize all-natural activated carbon technology to absorb and neutralize trash odors, leaving your kitchen smelling fresh and clean. Illness-causing Volatile Organic Compounds (VOCs) are also trapped in the filter, making the air you breathe cleaner and healthier. We recommend replacing the AbsorbX filter every three months, or as needed.



## About AbsorbX® Technology

\*Order replacement AbsorbX filters at [www.itouchless.com/absorbx](http://www.itouchless.com/absorbx)



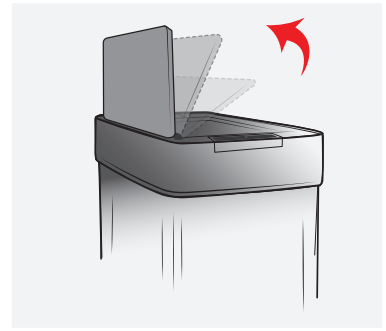
## How To Use The Trash Bag Retainer Ring

# How to Move the Sensor Control Panel for Left (A) or Right (B) Side Lid Opening\*



Use slotted (flat-head) screwdriver

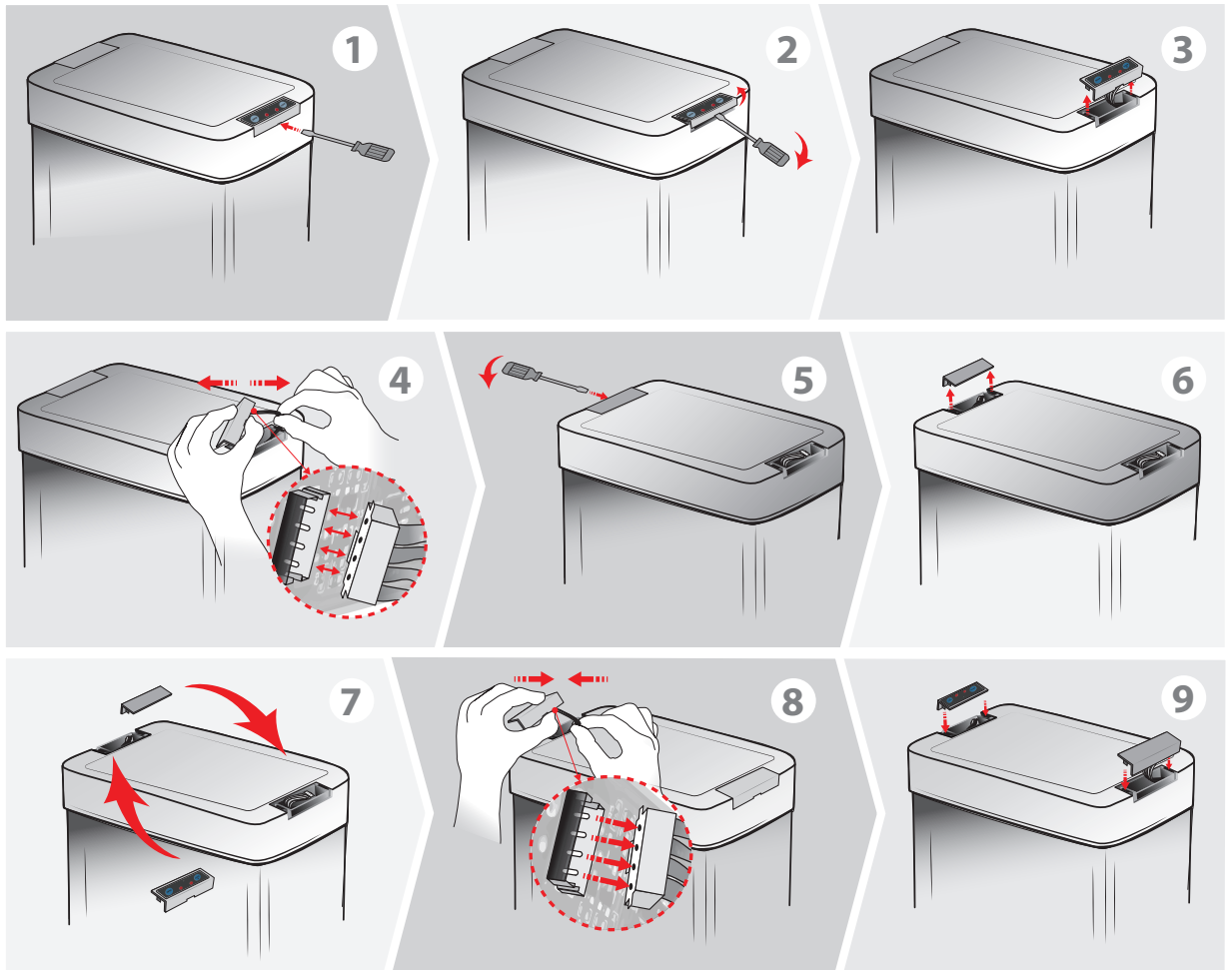
## A Left Opening



## B Right Opening



\*Your lid open orientation may be changed from left to right or right to left. See video instruction at [www.itouchless.com/sgsensor](http://www.itouchless.com/sgsensor)





- Replace AbsorbX® Odor Filter every 3 months or when odor becomes too strong.
- If the carbon filter mount is too tight, unscrew to loosen it. **WARNING:** Be sure to properly fasten both the carbon filter compartment and mount.
- Order replacement AbsorbX filters at [www.itouchless.com/absorbx](http://www.itouchless.com/absorbx)
- Filter Compartment can be washed if it gets dirty
- Used AbsorbX® Odor Filter pouch should be disposed of in a trash can

General Troubleshooting Steps

1. Power lid off and remove batteries, then rub and wipe clean the sensor area with a soft, damp cloth and dry it immediately with a soft, dry cloth. Re-insert batteries.
2. Place trash can in an open area where nothing is blocking or within 10 inches of the sensor eye. Make sure no sunlight or spotlight shines on the sensor. Turn on the power and try opening lid again.
3. If trash can is still not working correctly, remove the batteries. Let trash can sit for at least 2 hours to reset. Try opening lid after reset.

If your trash can is still not working after trying these troubleshooting steps, contact iTouchless Customer Support at 1-844-660-7978 or [support@itouchless.com](mailto:support@itouchless.com).

Troubleshooting

| Problem  | Solution   |
|--|--|
| 1. The trash can is brand new, and only works occasionally       | Peel off the thin, transparent protector/sticker on top of the sensor eye. If the lid still doesn't work regularly, try a new set of batteries. Then follow the <b>General Troubleshooting Steps</b> .   |
| 2. The lid stays open or lid opens and closes continuously       | The sensor eye may be affected by dirt, stain, dust, moisture or reflection. Move the trash can to a different location or turn the trash can slightly so that the sensor faces another direction, and follow the <b>General Troubleshooting Steps</b> .                     |
| 3. Grinding noise when the lid opens/closes                      | This can be caused by broken gears or lid hinge. <ul style="list-style-type: none"> <li>• Check for damage on the hinges that connect to the lid</li> <li>• Follow the General Troubleshooting Steps</li> <li>• Contact us at 1-844-660-7978 for warranty service</li> </ul> |
| 4. The lid does not open/close                                   | If you are using Batteries: <ul style="list-style-type: none"> <li>• Ensure batteries are inserted correctly and close the battery cover firmly</li> <li>• Attempt to power lid on to see if the indication light is visible</li> </ul>                                      |
| 5. I wave my hand over the sensor eye, but the lid does not open | It is not a motion sensor. Hold your hand or object steadily (do not wave your hand) within 4-6 inches over sensor eye for it to detect and open.  |
| 6. Why is the indicator light flashing in yellow/amber color?    | The battery power is low. Replace all batteries with a new set of alkaline batteries. Do not use rechargeable batteries or old batteries.  |

## Parts & Accessories

Order at [itouchless.com/parts](http://itouchless.com/parts)



Lid Cover



Trash Bag Retainer Ring



Base with Base Ring



Open/Close Sticker



Sensor Control Panel



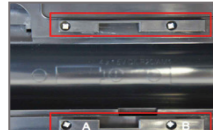
iTouchless Logo



AbsorbX® Odor Filter Compartment



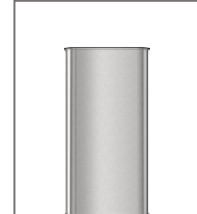
AbsorbX® Odor Filter



Tracks and Screws for AbsorbX® Odor Filter Compartment



Battery Cover



Can Body

## One (1) Year Limited Warranty

4 Gallon Slim Sensor Trash Can is distributed by iTouchless Housewares & Products, Inc. (iTouchless) with the highest quality components and most advanced technologies available. The trash can is warranted to be free from defects in material and workmanship, given normal use and care, for 365 days from the date of the original purchase with proof of purchase within the United States and Canada. iTouchless will only honor warranty requests from orders placed with our authorized dealers. Items sold as used, floor sample or refinished are sold solely under the terms and conditions of the selling party; iTouchless will not warrant such purchase. iTouchless will repair or replace a working condition Lid Cover thereof which fails as the result of such a defect during the warranty period.

The warranty is the customers' exclusive remedy for product defect and does not apply to:

- User modification
- Attachments to product by user that causes damage
- Any product, on which the seals and/or serial numbers have been broken, removed, tampered with, defaced or altered in any manner
- Damage caused by abuse, misuse, accident, water or theft

Except as stated above, iTouchless makes no express or implied warranties as to any product, in particular, makes no warranty of merchantability or of fitness for any particular purpose. iTouchless shall not be liable for consequential or incidental damages arising from any product defect. Our Liability is limited to the replacement of any defective product. iTouchless expressly disclaims all warranties not satisfied in this limited warranty. Any implied warranties that may be imposed by law are limited to the terms of this limited warranty. The Can Body, AbsorbX® Odor Filter, Retainer Ring, Filter Compartment, and Battery Cover are not covered by this warranty.

If Trash Can should fail during the warranty period, contact us through <http://www.itouchless.com/contacts/> to submit a request for warranty service. For additional details, please refer to the warranty email that iTouchless will provide. The required warranty fee is subject to location. Fee references are as following: for Contiguous 48 U.S. States \$9.95 and up, for Canada \$19.95 and up, for Alaska and Hawaii \$29.95 and up.

Subject to the above conditions, we will ship a working unit to you after payment has been provided for the warranty service fee. This warranty gives you specific legal rights. However, you may also have other rights that vary from state to state and province.