

ASSEMBLY INSTRUCTIONS

ASSEMBLY TIPS :

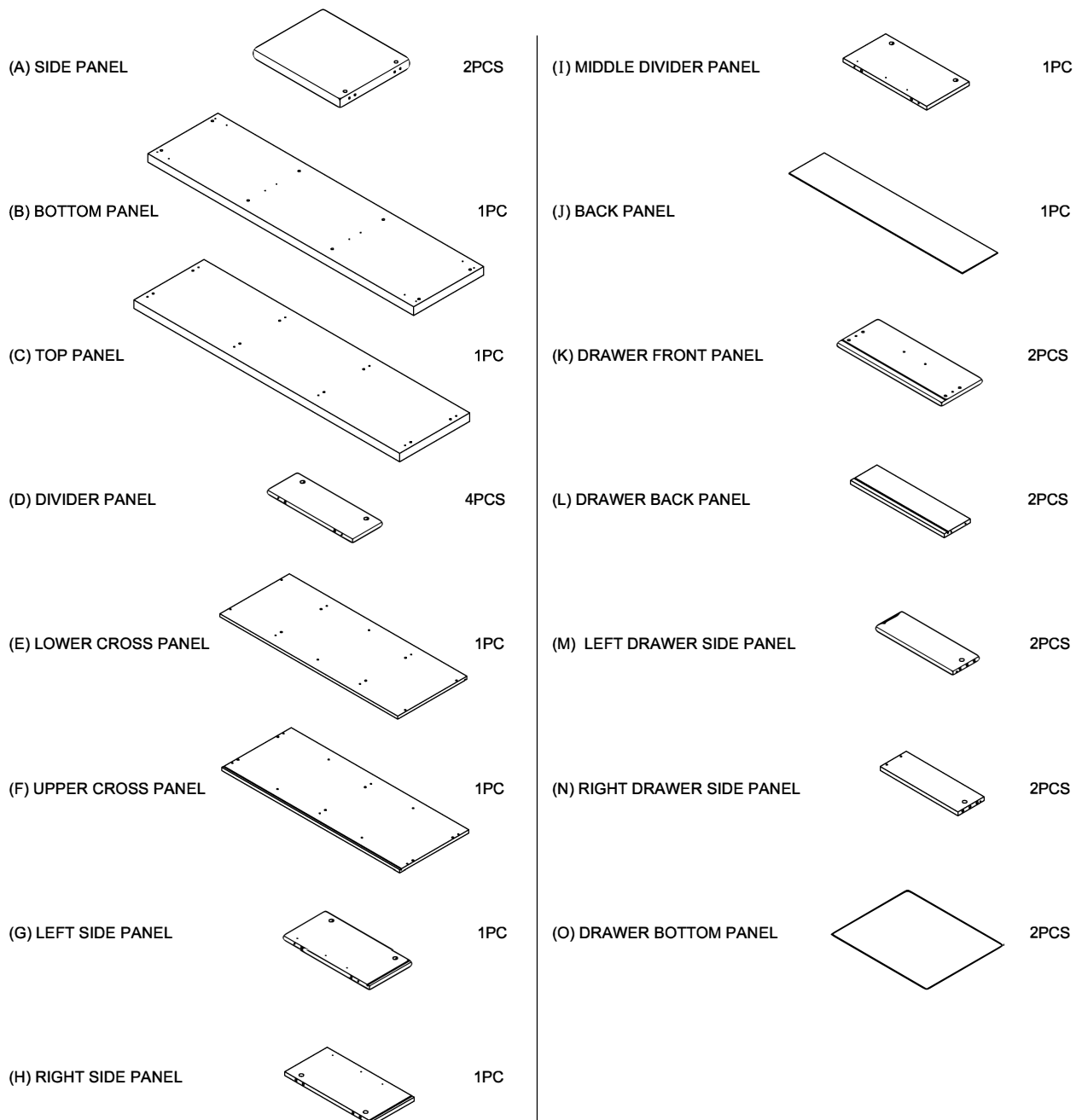
- 1.Remove hardware from box and sort by size.
- 2.Please check to see that all hardware and parts are present prior to start of assembly.
- 3.Please follow attached instructions in the same sequence as numbered to assure fast & easy assembly.

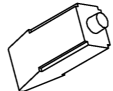

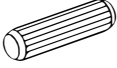


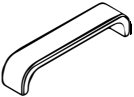







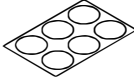


Warning !

- 1.Don't attempt to repair or modify parts that are broken or defective.Please contact the store immediately.
- 2.This product is for home use only and not intended for commercial establishment.

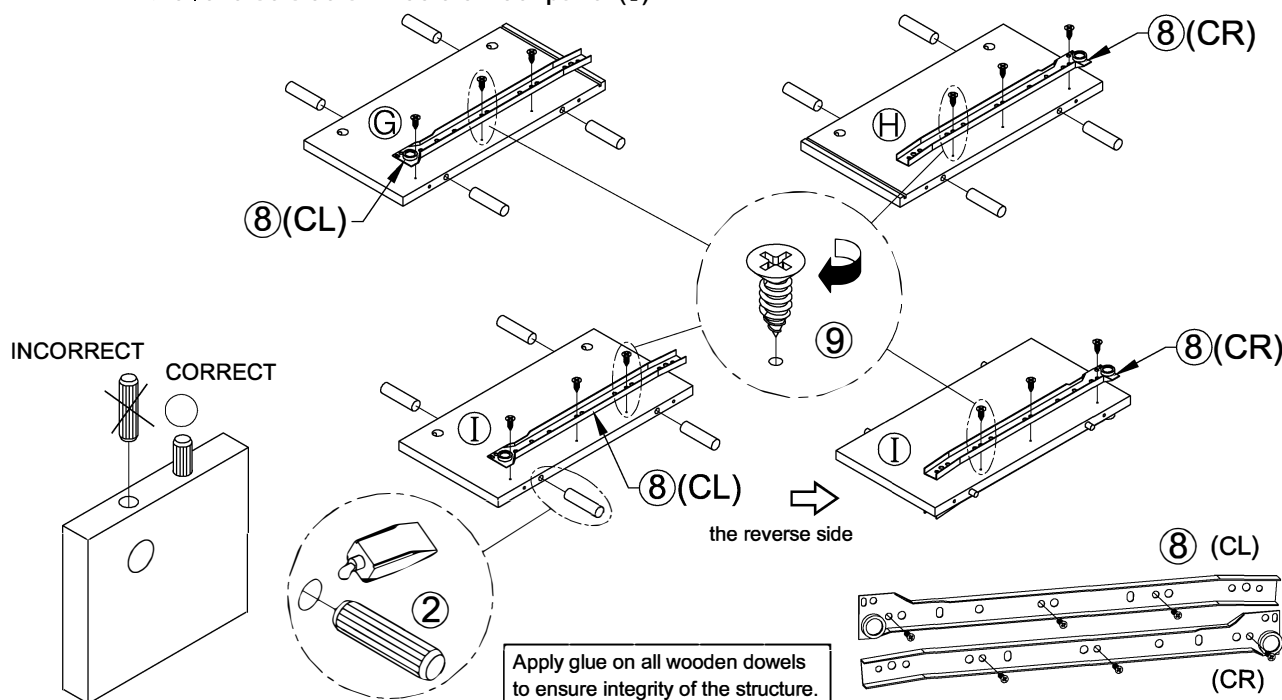
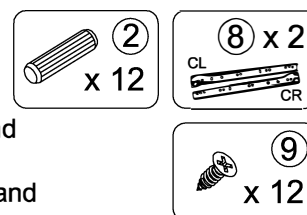
PARTS IDENTIFICATION:



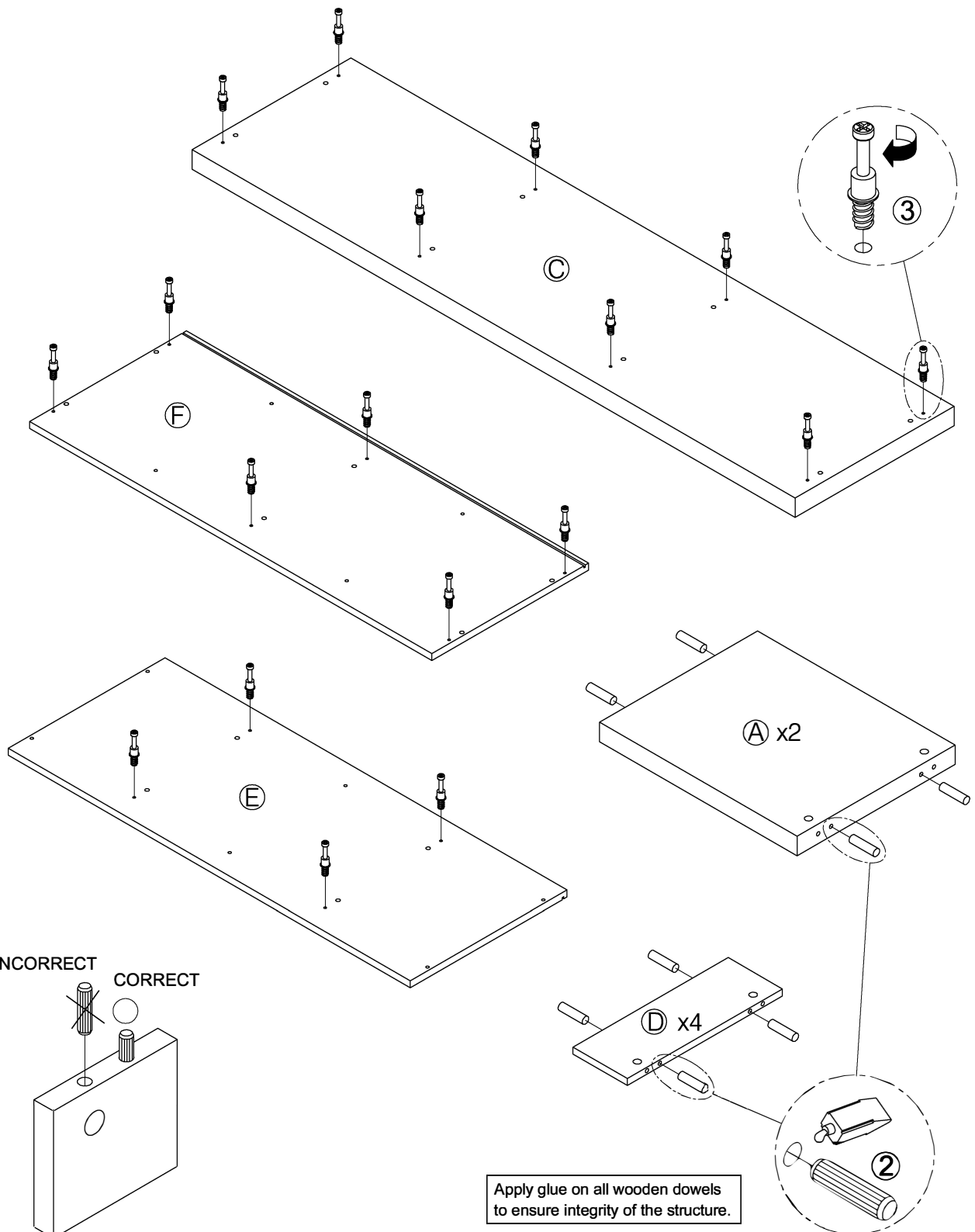
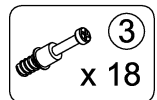
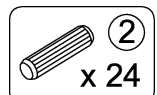
Z	HARDWARE PACKAGE						
NO	DESCRIPTION	FIGURE	Q'TY	NO	DESCRIPTION	FIGURE	Q'TY
1	GLUE 40g		1PC	8	GLIDES L = 350mm		2SET
2	WOODEN DOWEL § 8x30mm		44PCS	9	SHORT SCREW ø3.5x10mm		24PCS
3	CAM BOLT § 7x35.5mm		22PCS	10	HANDLE L=120mm		2PCS
4	CAM LOCK § 15x12mm		22PCS	11	HANDLE BOLT § 4x25mm		4PCS
5	LONG BOLT ø9.5x55mm		8PCS	12	FOOT 100x50x25mm		6PCS
6	LONG SCREW § 4.5x42mm		10PCS	13	FOOT SCREW § 5x22.5mm		12PCS
7	SCREW ø4.3x35mm		8PCS	14	STICKER § 20mm		4PCS

It needs two persons and takes about sixty minutes to assemble the item.

STEP 1 : Insert Wooden dowel (2) into the holes on the two sides of Left side panel (G), Right side panel (H) and Middle divider panel (I).
Using Short screw (9) to attach Glides (8-CL) on Left side panel (G) and Middle divider panel (I).
Using Short screw (9) to attach Glides (8-CR) on Right side panel (H) and the reverse side of Middle divider panel (I).

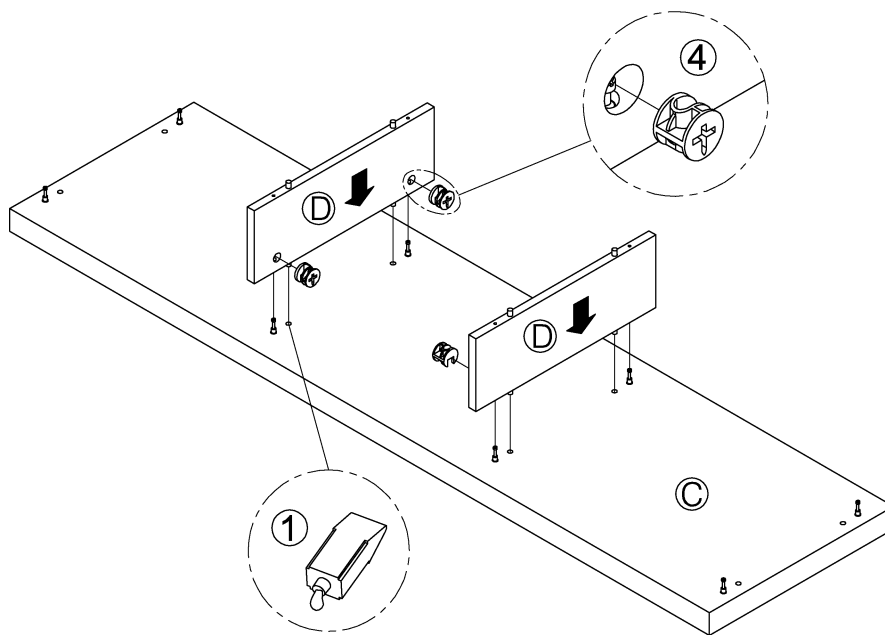
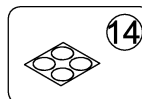
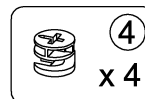


STEP 2 : Insert and screw Cam bolts (3) into the holes of Top panel (C), Upper cross panel (F) and Lower cross panel (E).
Insert Wooden dowel (2) into the holes of two sides of Side panel (A) and Divider panel (D).

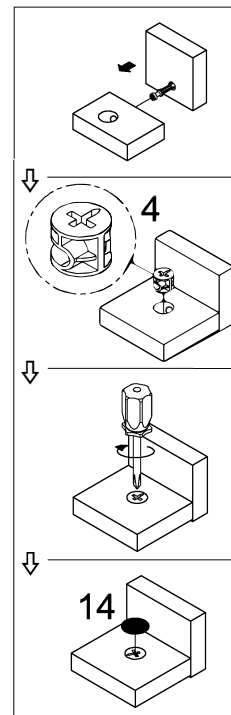


STEP 3 : Connect Divider panel (D) with Top panel (C).

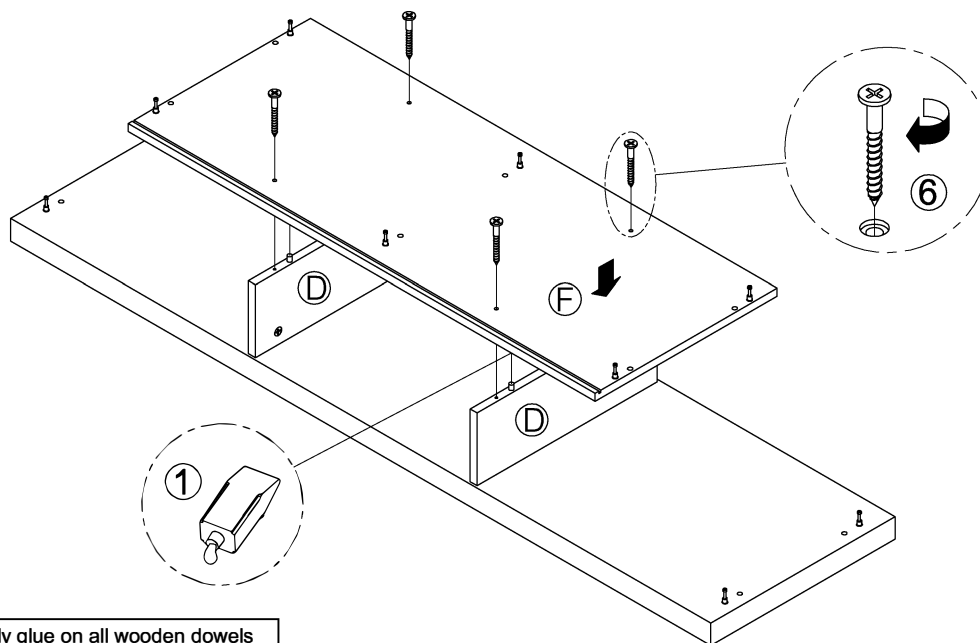
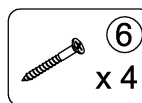
Insert Cam lock (4) and tighten with screw driver(NOT INCLUDED).
Cover Cam locks (4) with colored stickers (14).



Apply glue on all wooden dowels
to ensure integrity of the structure.

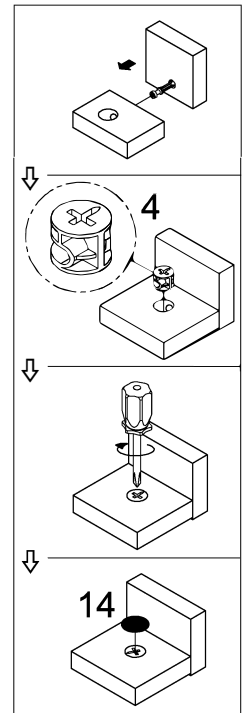
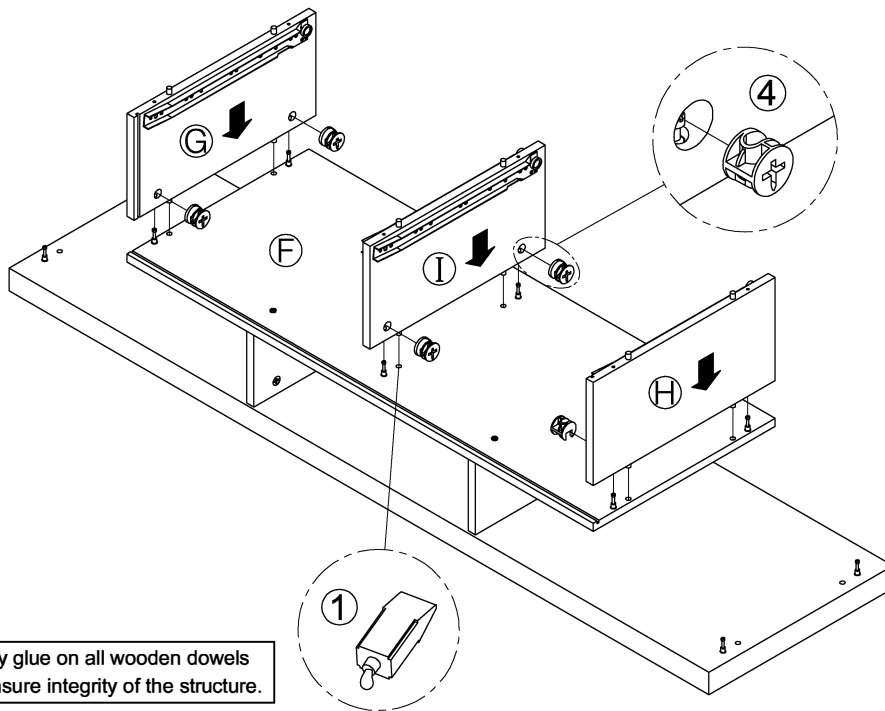
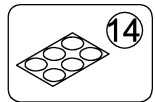
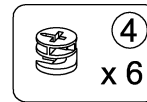


STEP 4 : Connect Upper cross panel (F) to the assembled piece from (STEP 3), using the Long screw (6), tighten with screw driver (NOT INCLUDED).

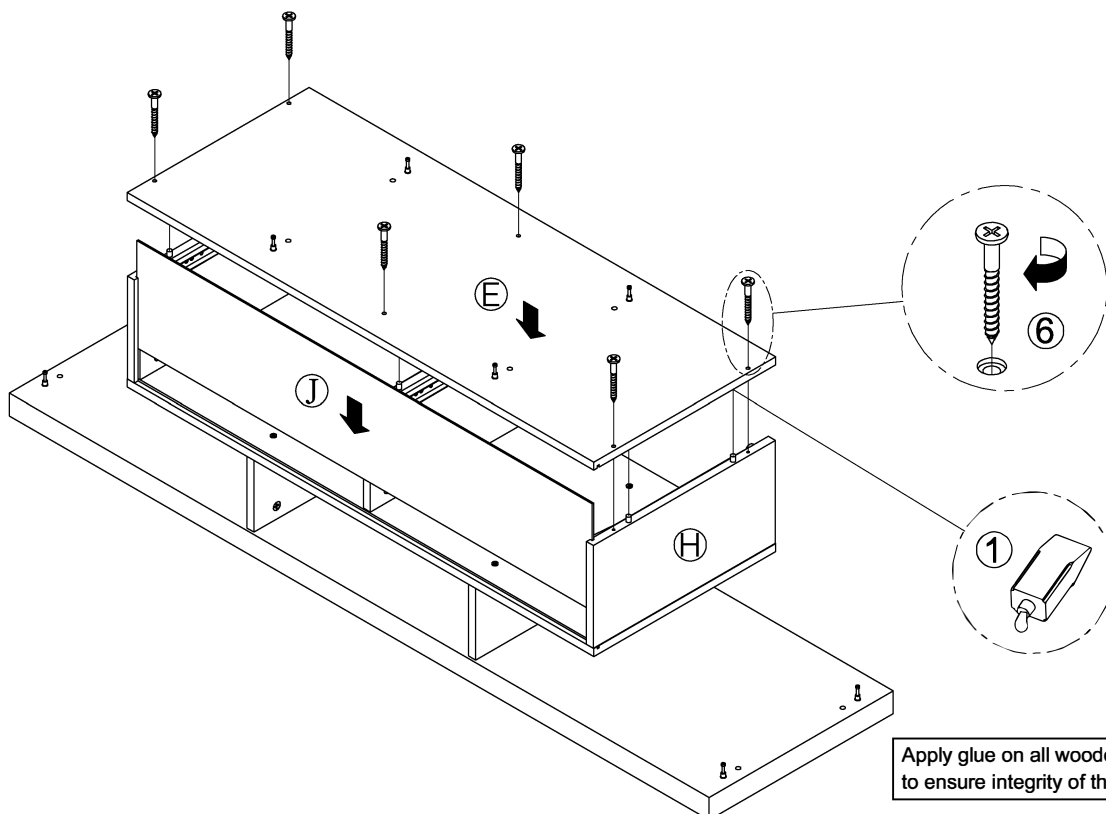
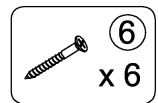


Apply glue on all wooden dowels
to ensure integrity of the structure.

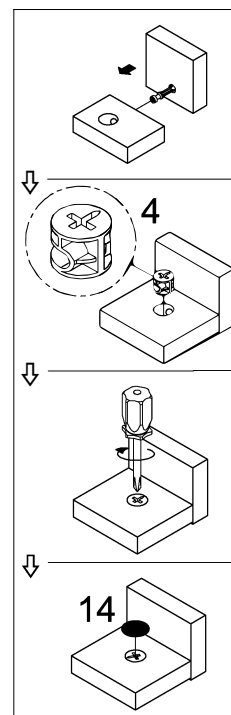
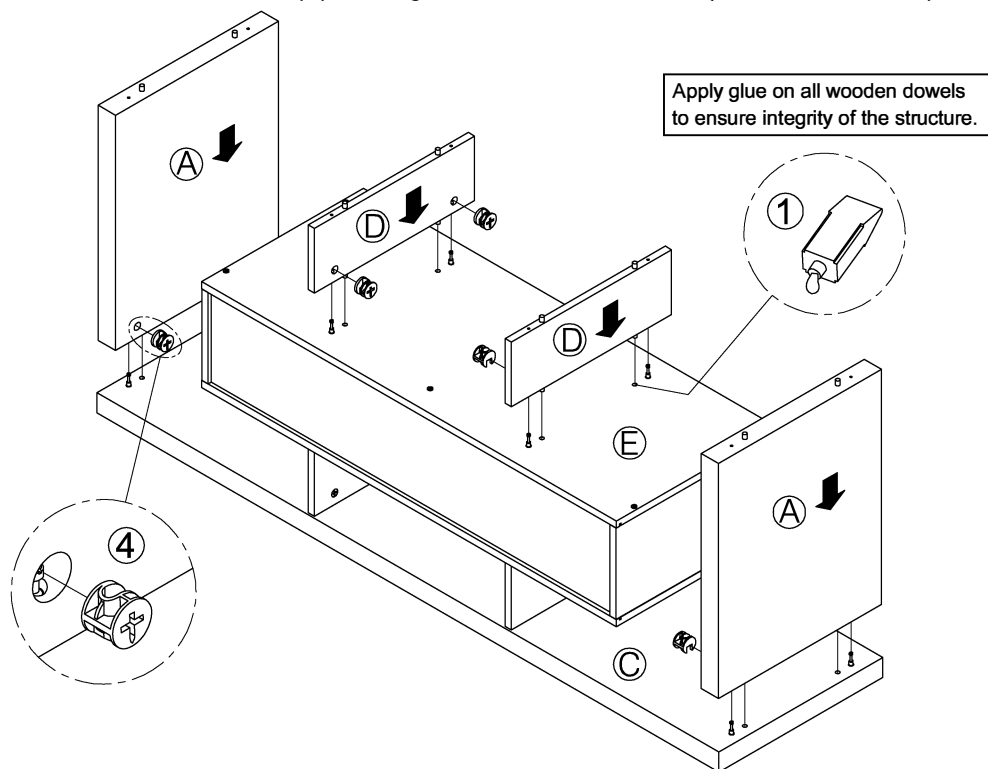
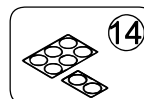
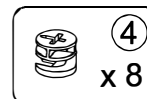
STEP 5 : Insert and screw cam locks (4) to the Left side panel (G), Middle divider panel (I) and Right side panel (H) and tighten with screw driver (not included).
Cover cam locks (4) with colored stickers (14).



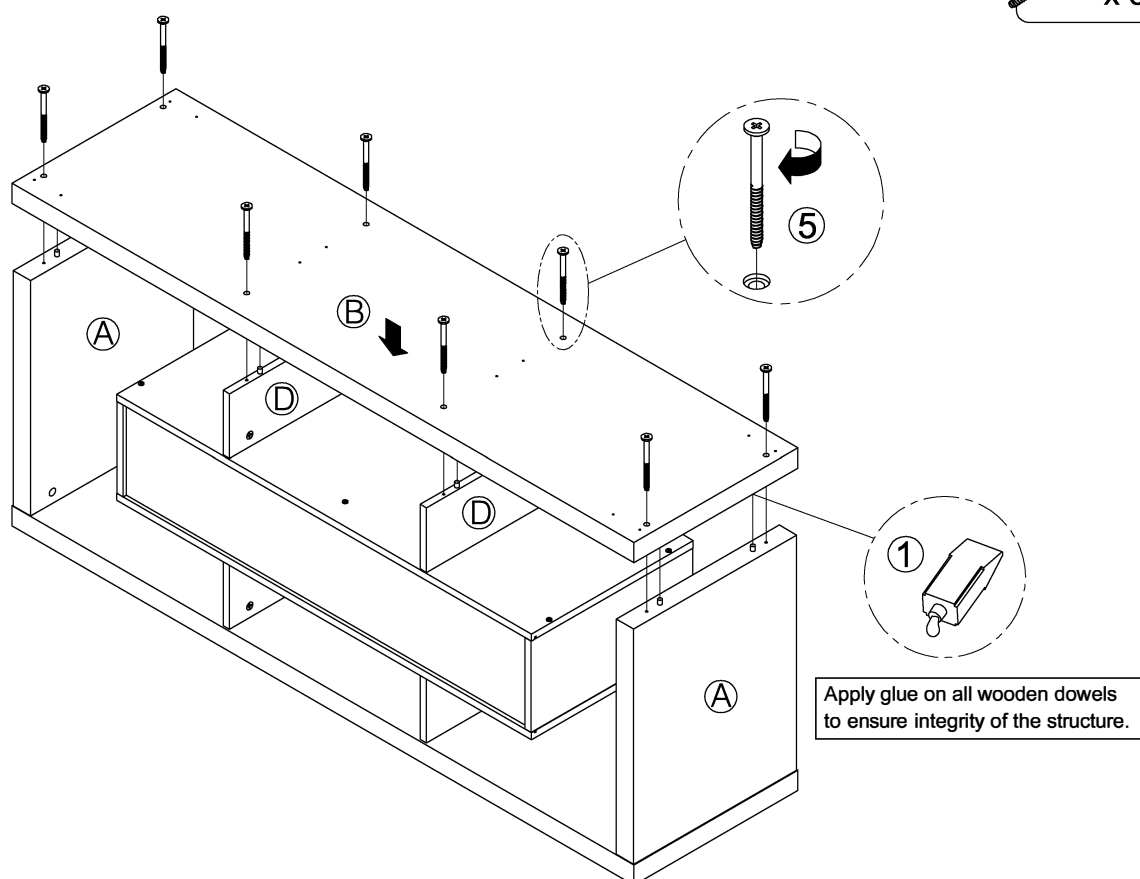
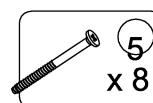
STEP 6 : Insert Back panel (J) along the slots of Upper cross panel (F), Left side panel (G) and Right side panel (H).
Attach the Lower cross panel (E) to the assembled piece from step (5), using long screw (6) tighten with screw driver (not included).



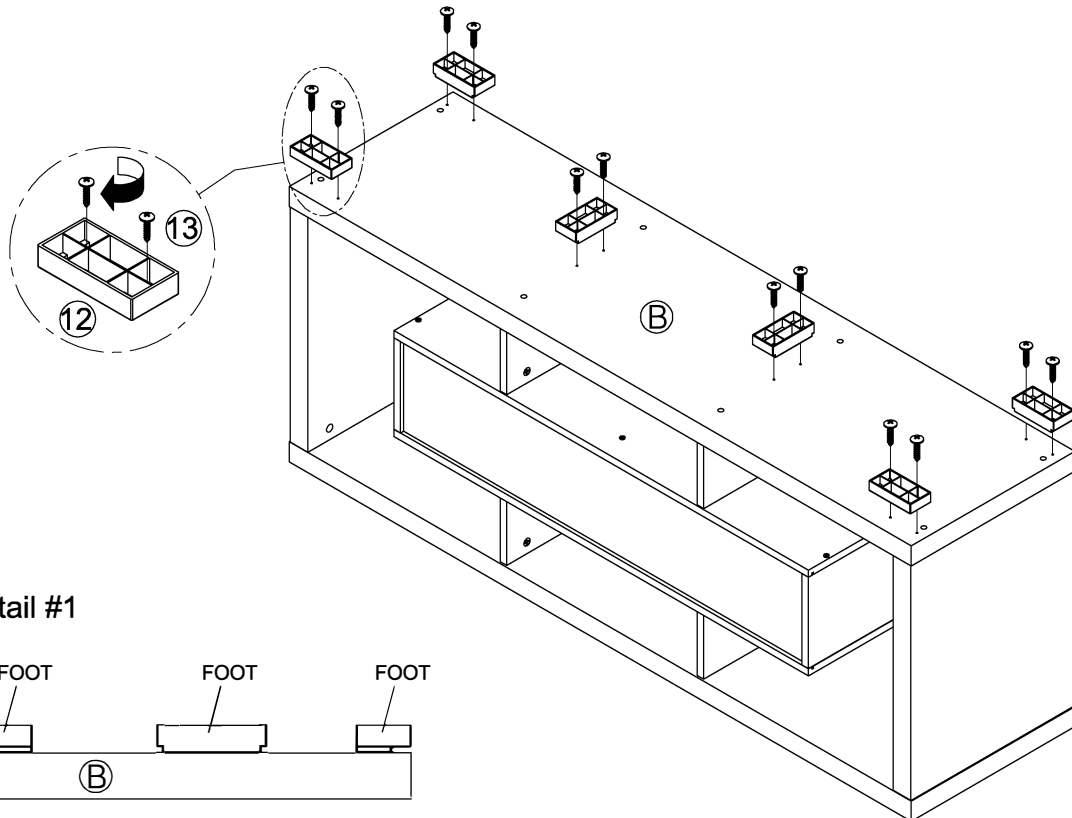
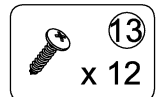
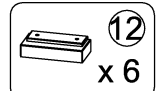
STEP 7 : Connect Side panel (A) to the Top panel (C), insert Cam lock (4) and tighten with screw driver (NOT INCLUDED).
Connect Divider panel (D) to Lower cross panel (C), insert Cam lock (4) and tighten with screw driver (NOT INCLUDED).



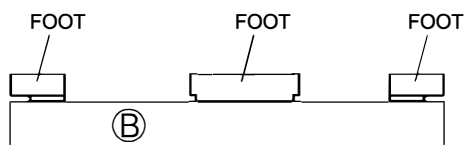
STEP 8 : Connect Bottom panel (B) to the assembled piece from (STEP 7), using the Long screw, tighten with screw driver (NOT INCLUDED).



STEP 9 : Fasten Feet (12) on Bottom panel (B) with Foot screws (13).



Detail #1



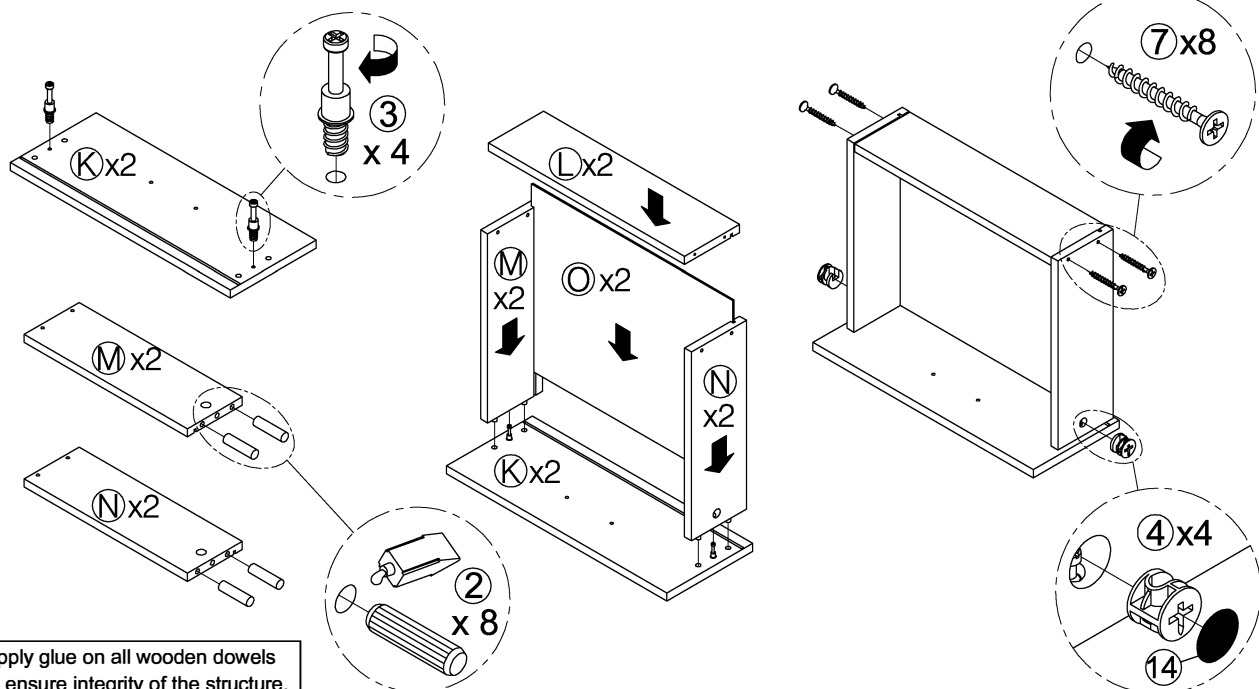
STEP 10 : Insert Wooden dowels (2) into the holes on the one sides of Left drawer side panel (M) and Right drawer side panel (N).

Insert and screws Cam bolts (3) into the holes of Drawer front panel (K).

Connect Left drawer side panel (M) and Right drawer side panel (N) with Drawer front panel (K), insert Cam lock (4) and tighten with screw driver (NOT INCLUDED).

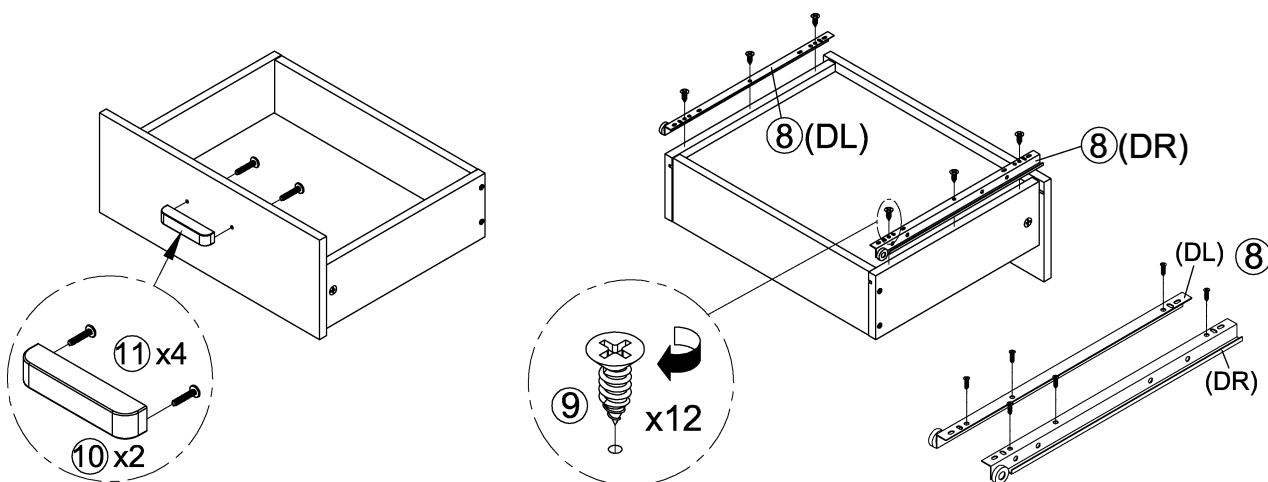
Insert Drawer bottom panel (O) along the slots of Drawer front panel (K), Left drawer side panel (M) and Right drawer side panel (N).

Connect Drawer back panel (L) to the Left drawer side panel (M) and Right drawer side panel (N) with Screw (7).

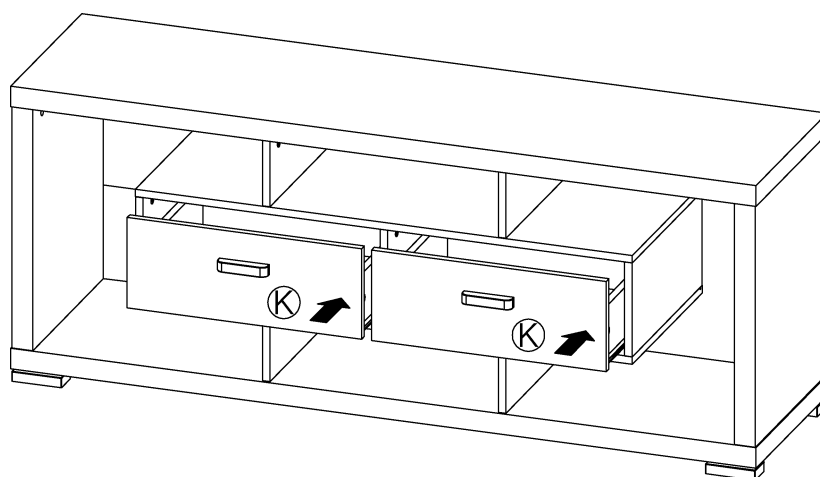


Apply glue on all wooden dowels to ensure integrity of the structure.

STEP 11 : Fasten Handle (10) on the Drawer front panel (K) with Handle bolt (11).
Attach Glides (8-DL) at Left drawer side panel (M), Glides (8-DR) at
Right drawer side panel (N) with Screw (9).



STEP 12 : Place drawers into the desk.



FINISH

