

10 YEAR MANUFACTURER'S LIMITED WARRANTY

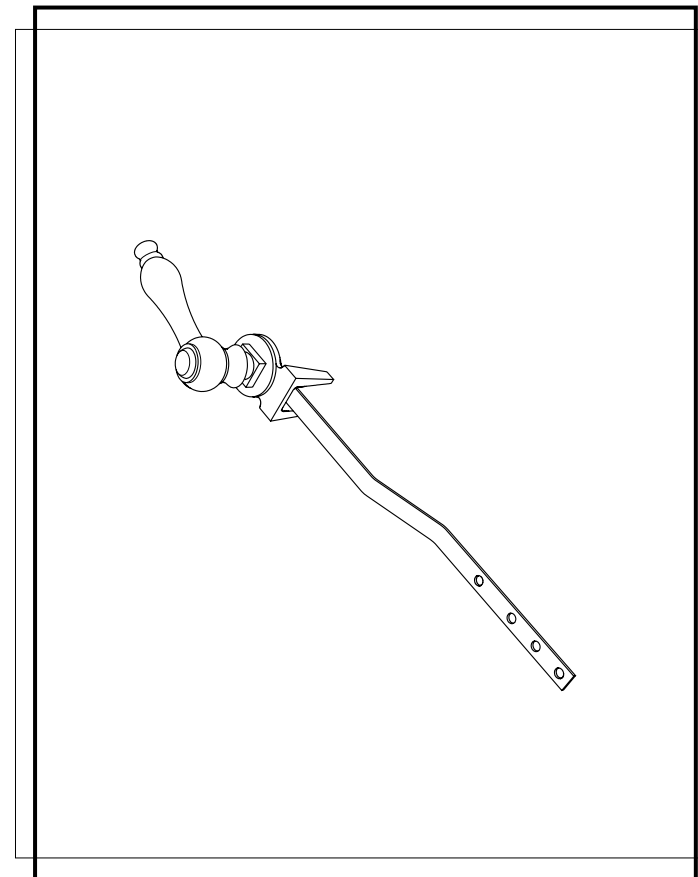
All parts of this Elements Of Design faucet are warranted to the original retail purchaser to be free from defects in material and workmanship for a period of ten(10) years from the date of purchase as shown on the purchaser's receipt. This warranty is limited to defective parts only, labor charges and/or damage resulting from improper installation, repair or replacements, as well as incidental and consequential damages connected therewith are excluded.

Any damage to this faucet as a result of misuse, abuse, neglect, accident for improper installation or any use not consistent with the instructions furnished by Elements of Design, will void this warranty. Replacement parts can be obtained from your local dealer.

CAUTION!!!

1. Water lines must be completely flushed before use, to avoid bris & clogs in your water system leading to mal-function and reduction of water flow.
2. Warranty to be void if water lines are not flushed before use of new faucet.
3. Use of abrasives of any strength may damage the finish of your faucet and void this warranty.

CODE APPROVAL: LA#M-000018



T 909.465.6687 F 909.548.6843 1877.FAUCET.1
www.eodfaucet.com
email: support@eodfaucet.com

INSTALLATION SHEET

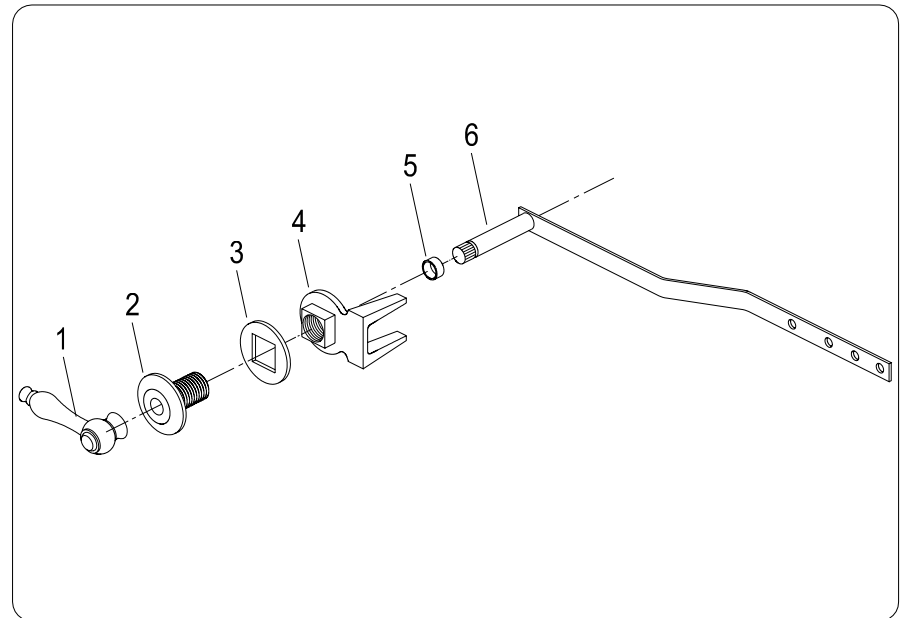
Disassemble tank lever :

Removing brass cotter pin from handle assembly end and slide pieces off.

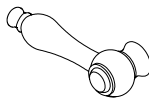
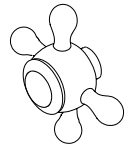
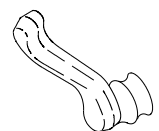
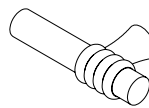
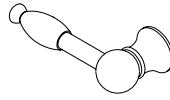
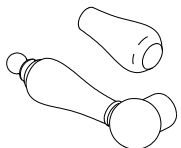
Install tank lever :

- 1.Place red fiber washer on flange. Place flange through opening in tank front.
- 2.Place black rubber washer on back of flange(in tank) and thread (reverse thread) brass support on back of flange, positioning support nut assembly legs away from side wall of tank.
- 3.Insert handle assembly through flange & support nut, positioning handle to the right or left depending on preference.
- 4.Place plastic sleeve on handle end.
- 5.Place arm on end of handle assembly between support nut legs, put cotter pin through hole on handle end.
- 6.Arm may be bent to fit individual applications.

Parts list



Handle list :

KTAL1,KTAL2,KTAL5,KTAL8	KTBX1,KTBX2,KTBX5,KTBX8	KTFL1,KTFL2,KTFL5,KTFL8
		
American Lever	Buckingham Cross	French Lever
KTML1,KTML2,KTML5,KTML8	KTKL1,KTKL2,KTKL5,KTKL8	KTPL1,KTPL2,KTPL5,KTPL8
		
Milano Lever	Knight Lever	Porcelain Lever