

Clutch (Chain) Operated Roller Shades Installation Guide



Getting Started

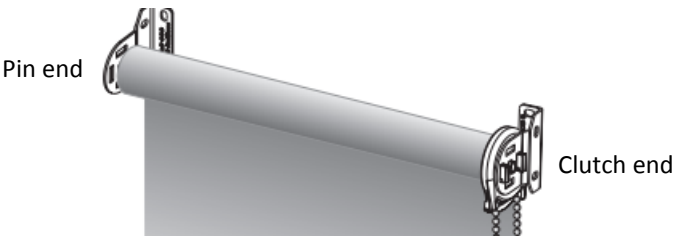
Parts Included: Unpack your shade and identify the following parts required for installation.



*Note: Screws provided are for installation into wooden frame or studs only. For other surfaces such as wallboard, plaster, metal, or concrete, please purchase the appropriate screws and hardware.

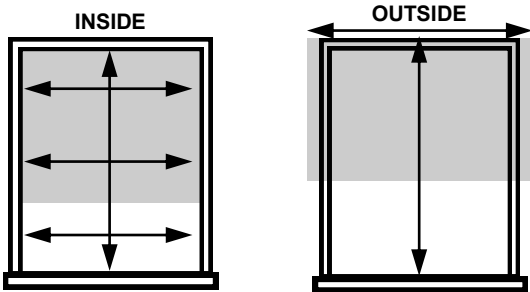
*Tools Needed: Flat head screwdriver, Phillips screwdriver, Drill (optional), Pencil, Tape Measure

The clutch (chain) end of the shade is positioned on the right side. The pin end is positioned on the left side.

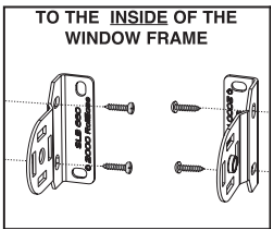


Step 1-Mount the Brackets

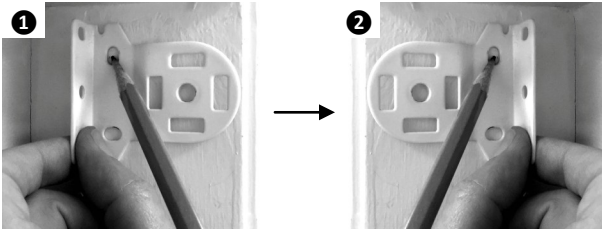
The shade can be mounted either inside the window frame or outside the window frame or wall. The brackets are universal—there are no “right” or “left” brackets.



INSIDE MOUNT



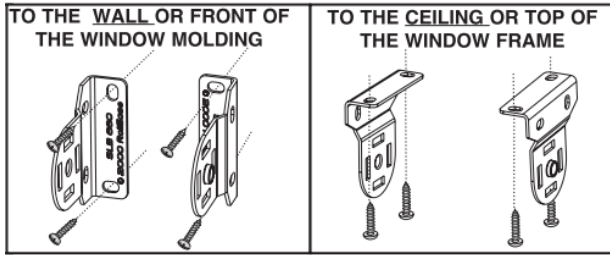
- 1 On inside of window frame, mark the right side bracket location with a pencil and mount the brackets using two screws.
- 2 Repeat for the bracket on the other side.



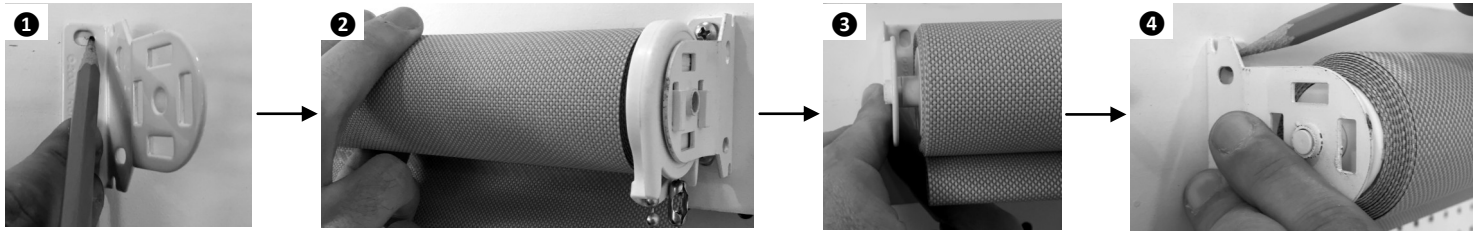
Clutch (Chain) Operated Roller Shades Installation Guide

HARBOR
SHADES

OUTSIDE MOUNT

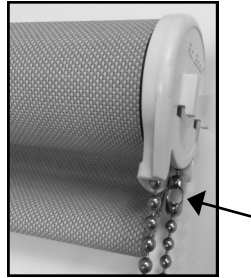


- 1 Mark the location for the clutch side (right side) bracket with a pencil and mount the bracket using two screws.
- 2 Insert the shade into the mounted bracket by sliding the hooks into the slots.
- 3 Fit the pin-end bracket onto the round spring pin-end plug (left side) while making sure shade is level. Press the bracket in at least 1/8" for necessary pressure on the pin.
- 4 Mark the bracket location and remove shade. Mount the bracket using two screws.

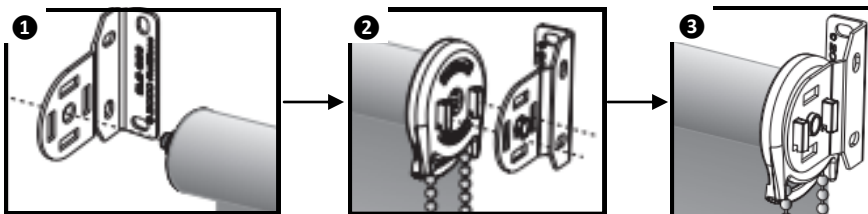


Step 2-Install the Shade

Important: Before placing the shade into the brackets, make sure the fabric is rolled up evenly and the chain connector is positioned on the rear-side chain and resting against the clutch.



- 1 Place the pin end (left side) of the shade into the round hole of the bracket.
- 2 Keeping the pin end secure in its bracket, position the clutch into the bracket so the hooks fit securely into the slots.
- 3 Once the hooks are through the slots, gently pull down on the clutch until the hooks have locked securely in place.



Clutch (Chain) Operated Roller Shades Installation Guide

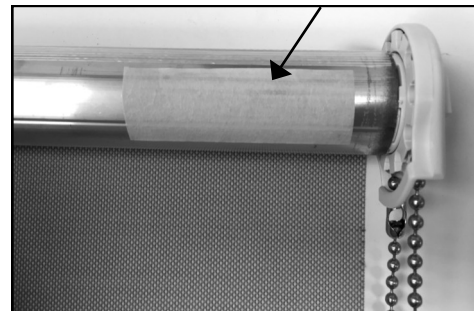


Test the Shade

Roll the shade up and down several times. If the fabric shifts on the roller noticeably to either side, you can correct the problem as follows:

Fabric shifts toward the left: Lower the shade fully until the aluminum roller tube is exposed. Place a small piece of tape (masking tape works well) approximately 1 1/2" long near the right edge of the roller (see illustration). Test the shade and add additional layers of tape as needed.

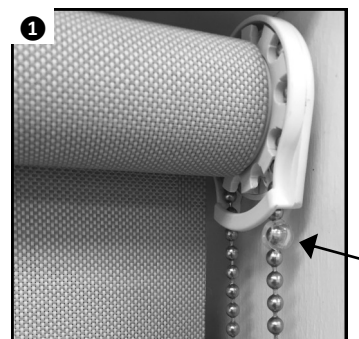
Fabric shifts toward the right: Lower the shade fully until the aluminum roller tube is exposed. Place a small piece of tape (masking tape works well) approximately 1 1/2" long near the left edge of the roller (see illustration). Test the shade and add additional layers of tape as needed.



The chain connector on the back of the chain will prevent the roller shade from being raised past its limit. In order to prevent the shade from being lowered past the ordered length, we have provided plastic stop balls that are easily snapped onto the chain. (Note: Additional material has been added to the ordered length to prevent exposure of the roller tube).

Roll the shade down to window sill or desired down limit.

❶ Attach a plastic stop ball to the highest point of the chain at the front of the clutch. This will prevent the shade from being lowered past the down limit.



Step 3-Install the Safety Tension Device

The chain tension device is required to be installed to comply with child safety standards. It is essential to use this device to reduce the hazards of entanglement and strangulation by limiting access to the control chain.

Lower the shade and position the safety tension device on the window frame or wall, so that the tension device does not interfere with the shade operation. The tension device should be positioned at the bottom of the chain loop and the chain should be taut on both sides.

Attach the tension device using the screws provided. The chain should pass through the tension device smoothly.



Maintenance & Care

The shade can be cleaned using water or a mild soap solution. Brush lightly with a soft cloth. Do not use any solutions containing chemicals. Let the shade dry before rolling it up.