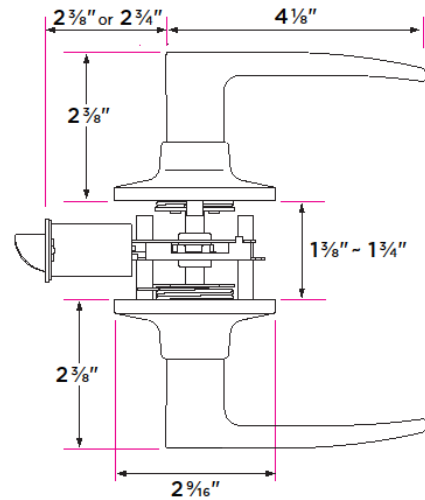
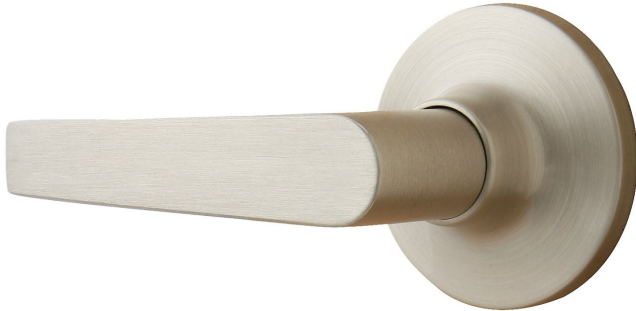


Lever



DESCRIPTION

CASE

Passage (hall/closet) Both sides always free	24
Privacy (bed/bath) Locked by finger turn. Unlocked by finger turn or coin slot from the outside	24
Entry- Locked/unlocked by inside finger turn or outside key	12
Entry and Deadbolt Combo	12
Dummy (closet) Inactive, single-sided, flush mount with two wood screws	24
Handleset Interior Trim	24
Push Button Privacy (bed/bath) Locked by push button. Unlocked by inside lever or coin slot from the outside. Inside lever is always free. Meets ADA requirements.	12
Storeroom- Inside lever is always free. Outside lever is always locked and a key is required to open.	12
Push Button Entry- Outside lever locked by inside push button. Unlocked by key or inside lever. Inside lever is always free. Meets ADA requirements.	12

Only available in Satin Nickel

Only available in Satin Nickel

Only available in Satin Nickel

Finishes

Polished Brass
Satin Nickel
Polished Chrome
Vintage Bronze

Door Handing

Reversible Handing

Door Thickness

1 3/8" to 1 3/4"

Key Cylinder

5 Pin KW1
5 Pin SC1 option

Latch

Adjustable 2 3/8" - 2 3/4" backset
1/2" throw bolt
2 1/4" x 1" radius corner faceplate or 4 way drive-in latch

Strike Plate

2 1/4" x 1 3/4" full lip radius corner standard

Door Prep

Crossbore 2 1/8"
Edgebore 1"

Materials

Zinc
All metal parts