

ASSEMBLY INSTRUCTION



- Model 6011
- Kitchen Accessory Series

For easy installation of your soap/lotion dispenser please:

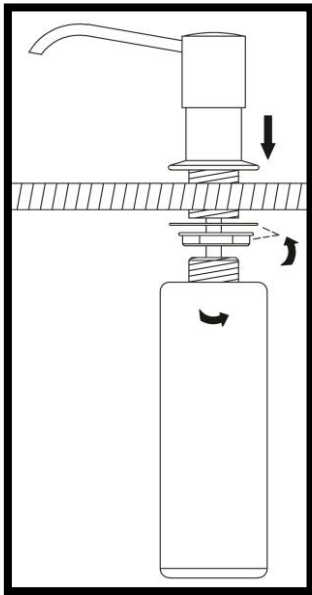
- **READ ALL** the instructions, warnings, care and maintenance information before beginning

1. Before Proceeding

We recommend calling a professional if you are uncertain about installing this product! This product should be installed in accordance with all local and state plumbing and building code requirements.

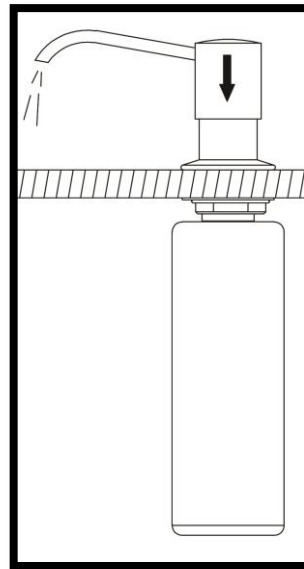
2. Install Soap/Lotion Dispenser

Install the dispenser as shown. Tighten the lock nut to secure the dispenser on the sink.



3. Operate Soap/Lotion Dispenser

Lift the pump head to fill the soap/lotion. Press down the pump to dispense the soap/lotion.



Attention:

Our soap/lotion dispenser comes with 30mm (1.2 inch) brass nipple (the threaded part), which can be installed on stainless steel kitchen sink and/or standard thickness (approx. 1 and 1/4 inch) granite counter-top with ease. When installing on an extra thick counter-top, a longer nipple may be needed. We carry 50mm (2.0 inch) nipple as spare parts. To request the parts, send us an email: customerservice@foremostimport.com. Please include date and place of purchase, along with original purchase order number.

CLEANING AND CARE

Care should be given to the cleaning of this product. Although the finish is extremely durable, it can be damaged by harsh abrasives or polish. To clean, simply wipe gently with a damp cloth and blot dry with a soft towel.

WARNING: SCRUBBING BUBBLES® BATHROOM CLEANER, LYSOL® BASIN TUB AND TILE CLEANER, and all other chemical cleaners must not be used on the dispenser body and nozzle. Use of these cleaners can crack and/or severely damage the dispenser. If overspray of these cleaners gets onto the dispenser, immediately dry with a soft cotton cloth.

LIMITED LIFETIME WARRANTY

Foremost Import LLC warrants to the original purchaser that its products will be free from defects in workmanship and materials. We recommend using a professional plumber for all installation and repairs. This warranty DOES NOT COVER LABOR CHARGES AND/OR DAMAGE INCURRED IN INSTALLATION, REPAIR, OR REPLACEMENT AS WELL AS ANY OTHER KIND OF LOSS OR DAMAGES. Any damage to this faucet as a result of misuse, abuse, or neglect, WILL VOID THE WARRANTY. This warranty applies only for faucets installed in the United States of America.

Replacement parts may be obtained by writing to customerservice@foremostimport.com

Proof of purchase from the original purchaser must be made available to Foremost Import LLC for all warranty claims. This exclusive written warranty is not transferable.