

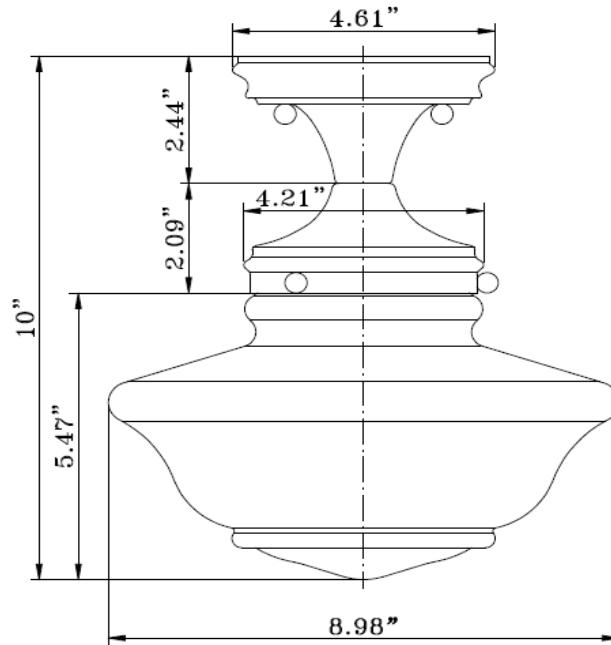
School House 1LT Ceiling Mount

Specifications

| | |
|---------------------------------|---|
| Material Construction: | Formed Steel |
| Lens: | Opal white glass |
| Lens Dimensions: | 5.47" H x 8.98" Dia |
| Lamp Type & Wattage: | One 60W, medium base incandescent lamps |
| Mounting: | Ceiling mounted |
| Finish: | Satin Nickel (US15) |
| Voltage: | 120V |
| Weight: | 1.64 lbs |
| Companion Fixtures: | Ceiling mounts |



Dimensions



Warranty & Compliances

| | |
|-------------------|---|
| Warranty | 10 Year Limited Warranty |
| UL | ETL/cETL listed, suitable for dry locations |
| ADA | N/A |
| EnergyStar | N/A |



Companion Fixtures

School House 1LT Ceiling Mount Satin Nickel

School House 1LT Ceiling Mount Oil Rubbed Bronze