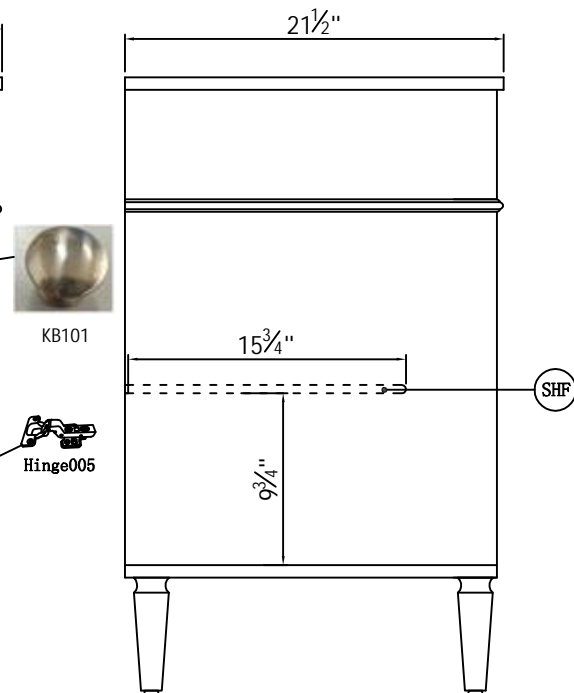
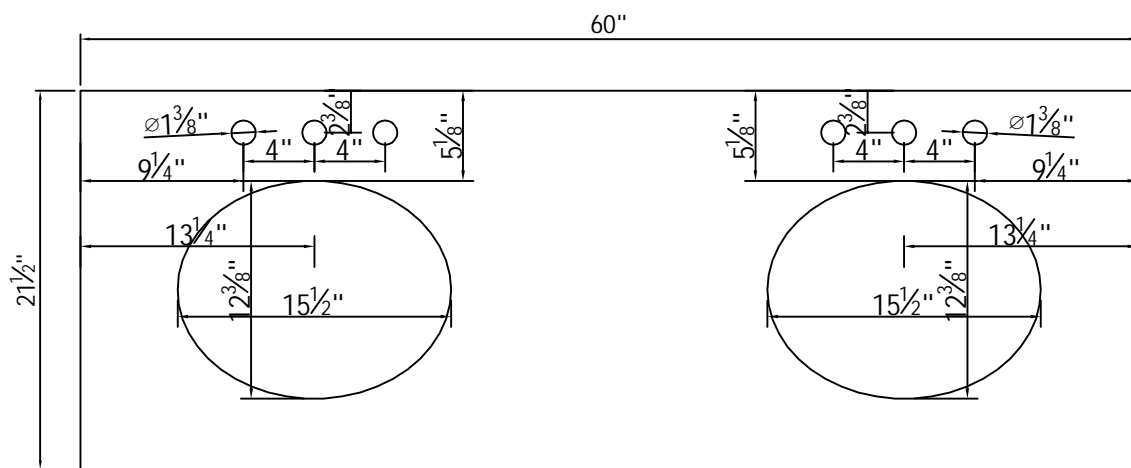


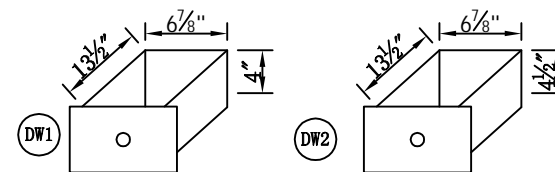
Front view



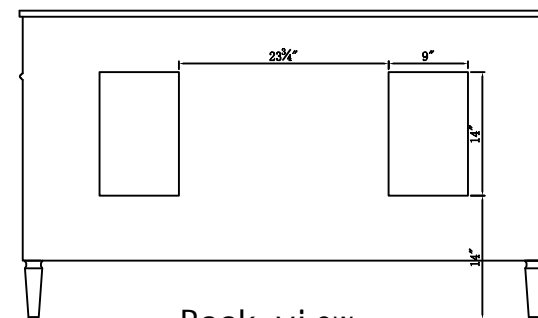
Side view



Top view



Drawer Interior Size



Back view

	Finish	Distressed finish (yes or no)	gloss finish	Mirror type	Beveled glass	Frame material	Solid wood construction	wood species	Vanity: base material
	blue	NO	NO	N/A	N/A	Solid wood & MDF	Solid wood legs	Rubberwood	MDF
Vanity: base finish	powder coated finish	Finished Back	Hardware finish	top material	Vanity: Countertop included	Vanity: Countertop material	Vanity: Countertop finish	Vanity countertop length (in)	Vanity countertop width (in)
blue	NO	Yes	Brush gold finish	Marble	Yes	Marble	Cararra white	60	21.5
Vanity countertop height(in)	Vanity countertop weight (lb)	Vanity countertop edge style	Number of Sinks accommodated	Sink material	Sink Width	Sink Depth	Sink Height	Sink Drain hole size	Sink mounting type
0.7	68	Flat	2	Porcelain	15.5"	12-3/8"	7	1.75	Undermount
Vanity Mounting type	Backsplash	Backsplash Width	Backsplash Depth	Backsplash Height	Drain assembly included	Faucet included	Faucet type	Faucet hole size (in)	Faucet hole spacing (in)
Free-Standing	No	N/A	N/A	N/A	No	No	N/A	1.5	8"3 Holes
# of faucet holes	Drawers Included	Number of Drawers	Joinery Type	Drawer railing	Drawer Width (in)	Drawer Depth (in)	Drawer Height (in)	Drawer Handle designs	felt lined drawers
6	YES	4	SQUARE ENDED BUTT JOINT	Metal	DW1: 10-5/8" & DW2: 10-5/8"	DW1: 14" & DW2: 14"	DW1: 5-5/8" & DW2: 6-1/2"	Knob	NO
drawer glide extension	drawer glide material	drawer dividers	Drawer Interior finish	Ball Bearing Glides	soft close drawer glides	Drawer Interior Width (in)	Drawer Interior Depth (in)	Drawers Interior Height (in)	false drawers?
Full extension	Metal	NO	blue	NO	Yes	DW1: 6-7/8" DW2: 6-7/8"	DW1: 13-1/2" DW2: 13-1/2"	DW1: 4" DW2: 4-1/2"	Yes
safety stop	Shelves?	Number of Shelves	Shelf is removable?	shelf material	adjustable shelves	shelf width (in)	shelf depth (in)	shelf height (in)	Shelf thickness (in)
Yes	Yes	2	Yes	MDF	Yes	20-1/2"	15-3/4"	9-3/4"	1/2"
Doors included	Number of Doors	door thickness	Number of cabinets	cabinet interior width	cabinet interior depth	cabinet interior height	Table/Desk: top width	Table/Desk: top finish	Table/Desk: glass top tempered
Yes	4	7/8"	2	20-1/2"	15-3/4"	19-5/8"	21.5"	Cararra white	No
Table/Desk: top maximum weight	Table: seating capacity	Seating: upholstery color	Seating: upholstery pattern	Seating: cushion material	shape of top	lift top	leg width	leg depth	leg height
66LBS	2	N/A	N/A	N/A	Rectangle	No	2-1/8"	2-1/8"	6-5/8"
leg design	Armoires: ring slots	Armoires: hooks	armoires: mirror dimensions	stackable	tip over restraint strap	"Any certification ? (CARB/TSCA VI)"	"Furniture/Vanity: California Proposition 65 warning required"	"Furniture/Vanity: prop 65 chemical name"	Assembly Required
straight legs	N/A	N/A	N/A	No	No	Yes	Yes	Cadmium	No
Shipment Type	Product Width	Product Depth	Product Height	Product Weight	Package LENGTH	Packaged WIDTH	Packaged Height	Package Weight	
LTL	60	21.5	35	198	65	26	40.125	222.2	