

NIGHT STAND

ASSEMBLY INSTRUCTIONS



ASSEMBLY INSTRUCTIONS

ASSEMBLY TIPS:

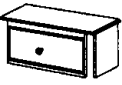


1. Remove Hardware from box and sort by size.
2. Please check to see that all hardware and parts are present prior to start of assembly.
3. Please follow attached instructions in the same sequence as numbered to assure fast & easy assembly.







Warning !

1. Don't attempt to repair or modify parts that are broken or defective. please contact the store immediately.
2. This product is for home use only and not intended for commercial establishment

PARTS IDENTIFICATION

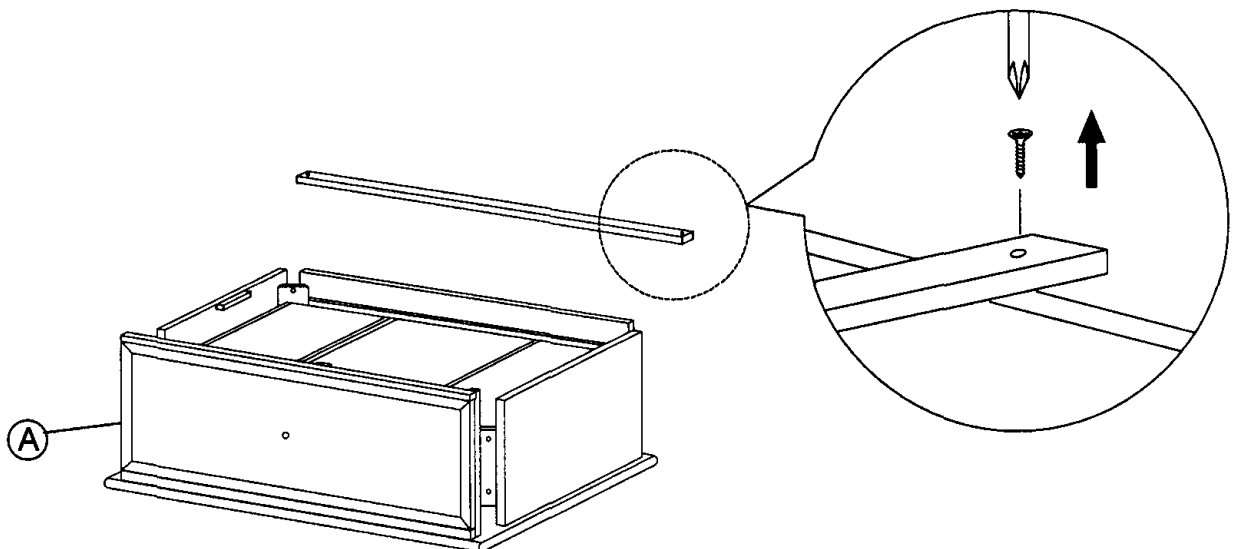
A		NIGHT STAND	1 PC
B		FRONT LEG	2 PCS
C		BACK LEG	2 PCS

HARDWARE IDENTIFICATION

1		ALLEN WRENCH	1 PC
2		BOLT	8 PCS
3		LOCK WASHER	8 PCS
4		FLAT WASHER	8 PCS

STEP 1

Place night stand upside down on soft surface. Unscrew the wood strip from the bottom of night stand (as per diagram shown) and discard.



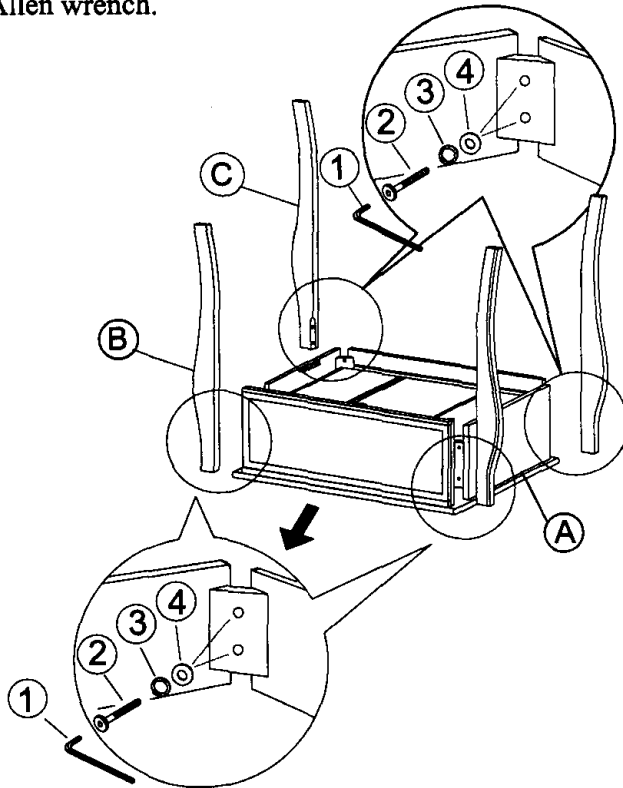
ASSEMBLY INSTRUCTIONS

STEP 2

Remove the drawer.

Align and fasten front leg and back leg to night stand using bolt, lock washer and flat washer.

Tighten with Allen wrench.



STEP 3

Unscrew the pull from the back of drawer front using screw driver (NOT INCLUDED).

Align and fasten the pull to drawer front using screw and tighten with screw driver (NOT INCLUDED).

Restore the drawer to night stand.

