

ASSEMBLY INSTRUCTION

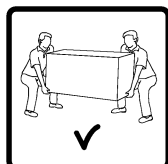
ASSEMBLY TIPS:

1. Remove hardware from box and sort by size.
2. Please check to see that all hardware and parts are present prior to start of assembly.
3. Please follow attached instructions in the same sequence as numbered to assure fast & easy assembly.



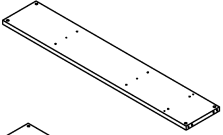
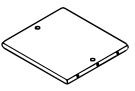
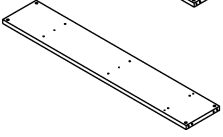
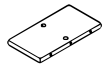
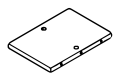
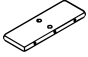
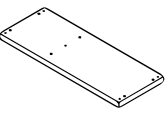
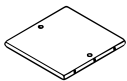
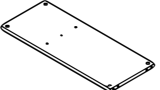
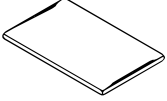
Warning !


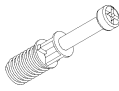
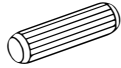
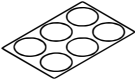

1. Don't attempt to repair or modify parts that are broken or defective. Please contact the store immediately.
2. This product is for home use only and not intended for commercial establishment.

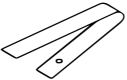





ASSEMBLY TIME PER UNIT: 40 MINUTES

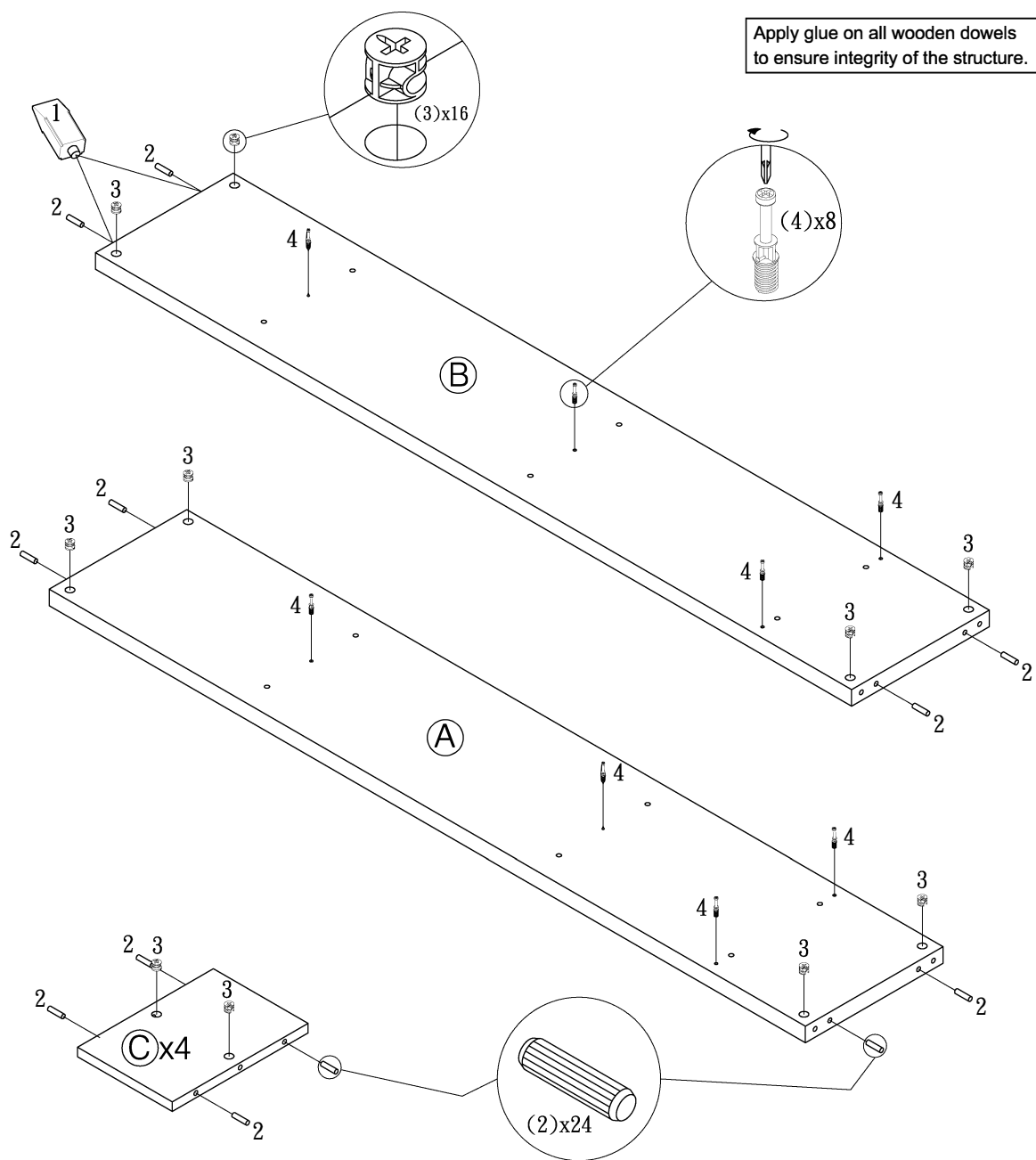
PARTS IDENTIFICATION:

(A) LEFT SIDE PANEL		1PC	(F) LARGE SHELF		1PC
(B) RIGHT SIDE PANEL		1PC	(G) MIDDLE SHELF		1PC
(C) SMALL DIVIDER PANEL		4PCS	(H) SMALL SHELF		2PCS
(D) TOP PANEL		2PCS	(I) MIDDLE DIVIDER PANEL		4PCS
(E) LOWER SHELF		1PC	(J) LARGE DIVIDER PANEL		4PCS

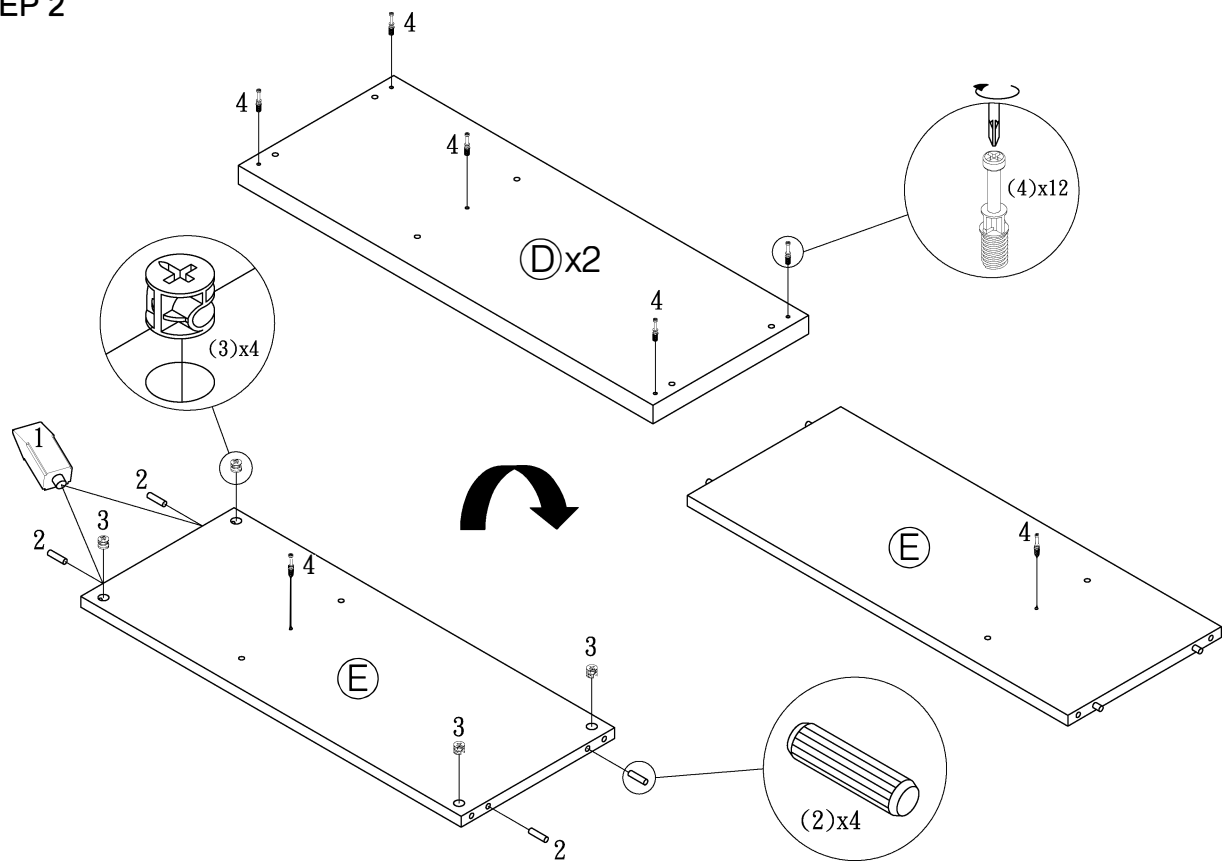
Z HARDWARE PACKAGE							
NO	DESCRIPTION	FIGURE	Q'TY	NO	DESCRIPTION	FIGURE	Q'TY
1	GLUE 40g		1PC	4	CAM BOLT $\phi 7 \times 35.5 \text{mm}$		36PCS
2	WOODEN DOWEL $\phi 8 \times 30 \text{mm}$		60PCS	5	STICKER $\phi 20 \text{mm}$		6PCS
3	CAM LOCK $\phi 15 \times 12 \text{mm}$		36PCS				

Z	HARDWARE PACKAGE						
NO	DESCRIPTION	FIGURE	Q'TY	NO	DESCRIPTION	FIGURE	Q'TY
6	ANTI-TIP STRAP 170x15mm		2PCS	8	WALL SCREW ø4x25mm		2PCS
7	WALL PLUG 6x30mm		2PCS	9	SCREW ø4x16mm		2PCS

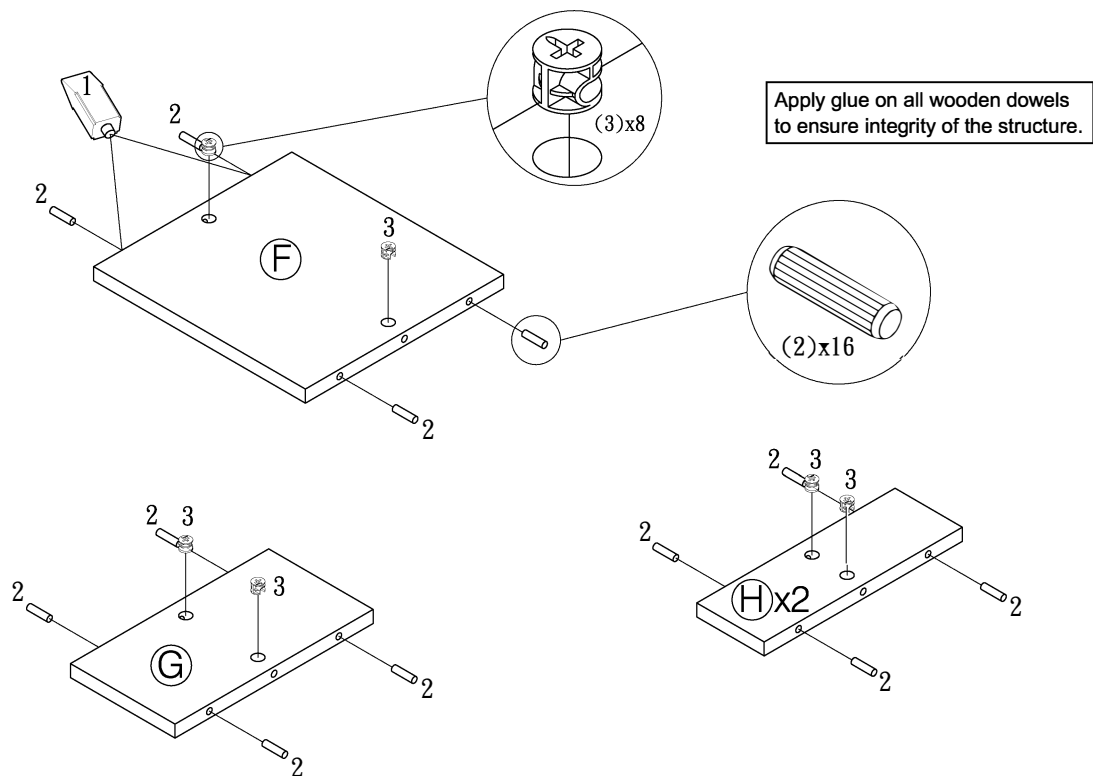
STEP 1



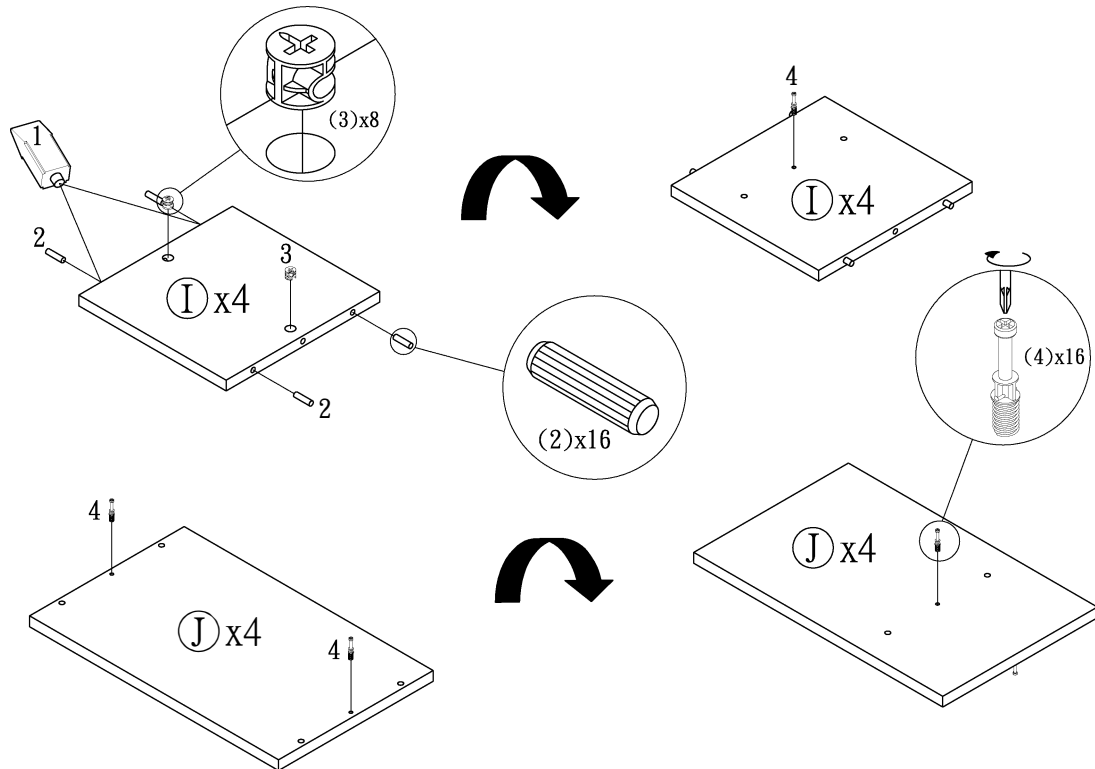
STEP 2



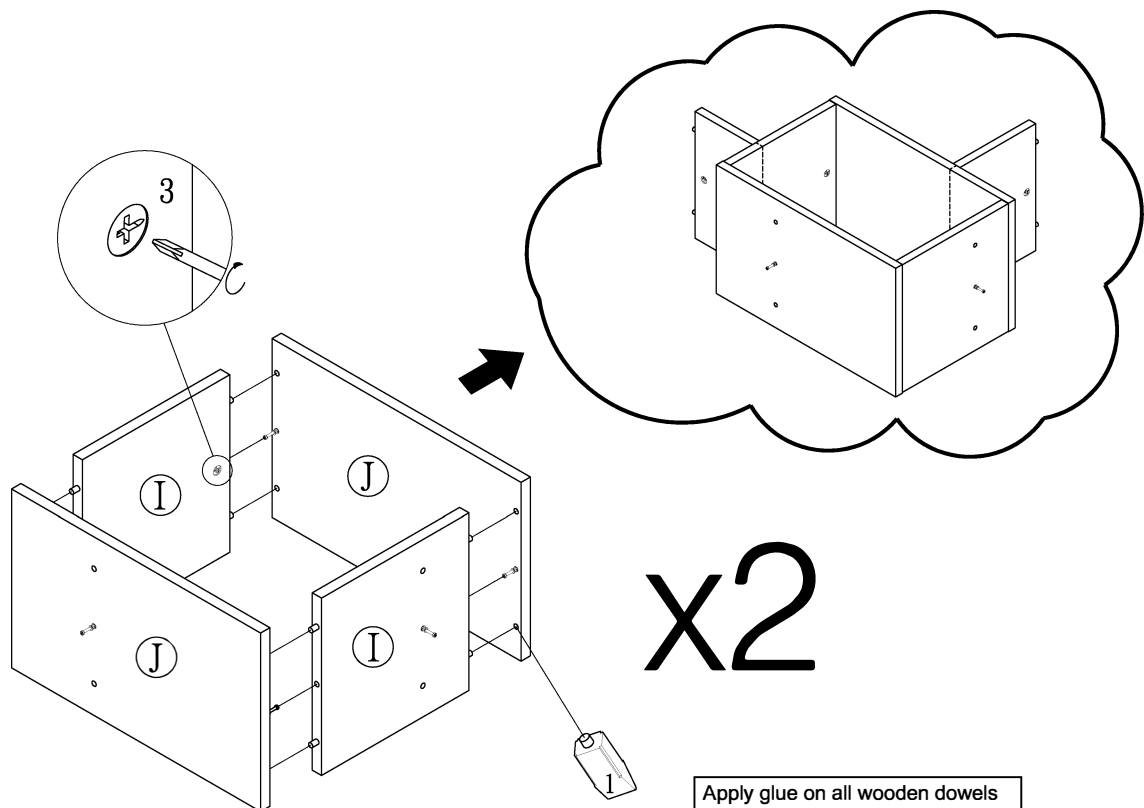
STEP 3



STEP 4

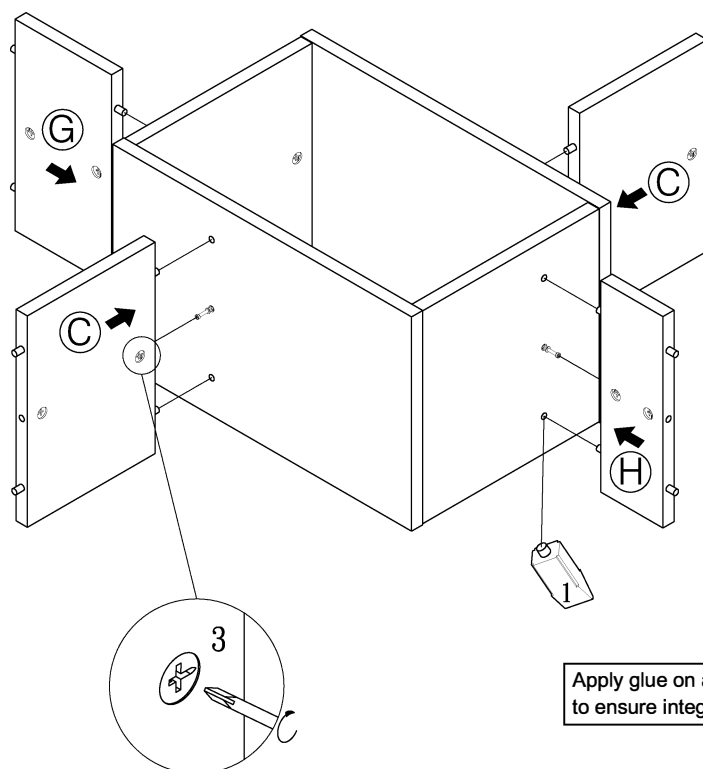


STEP 5



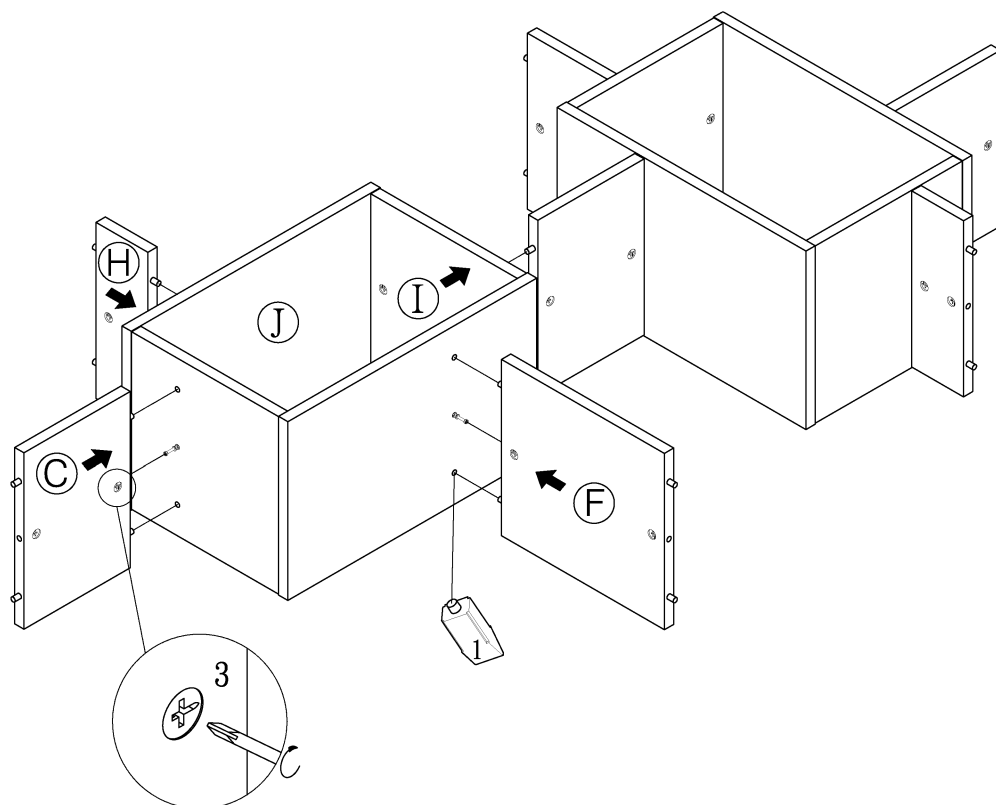
Apply glue on all wooden dowels to ensure integrity of the structure.

STEP 6

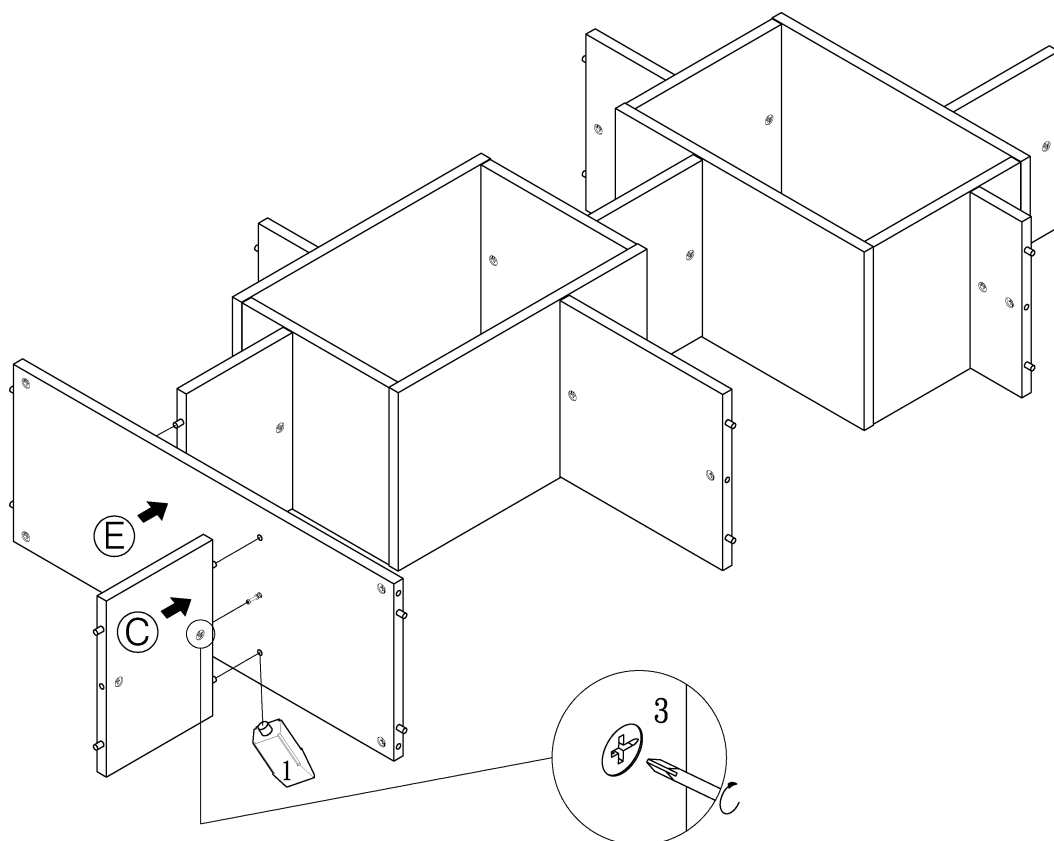


Apply glue on all wooden dowels to ensure integrity of the structure.

STEP 7

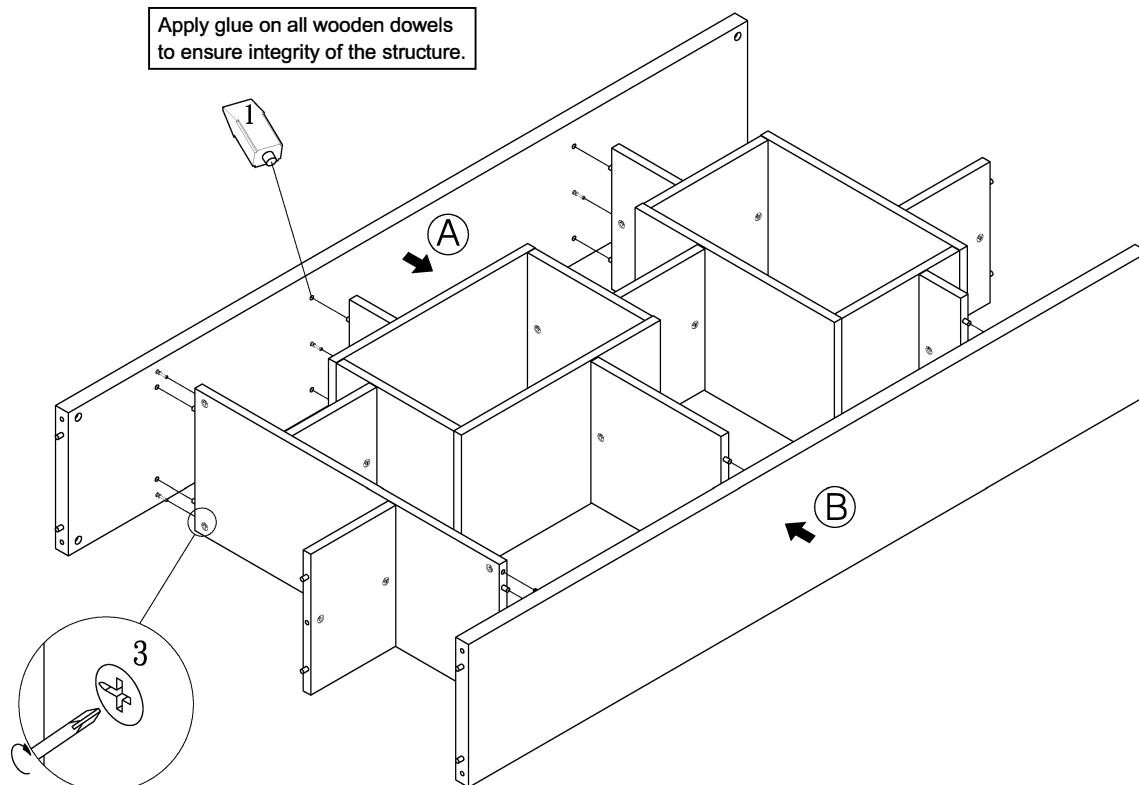


STEP 8



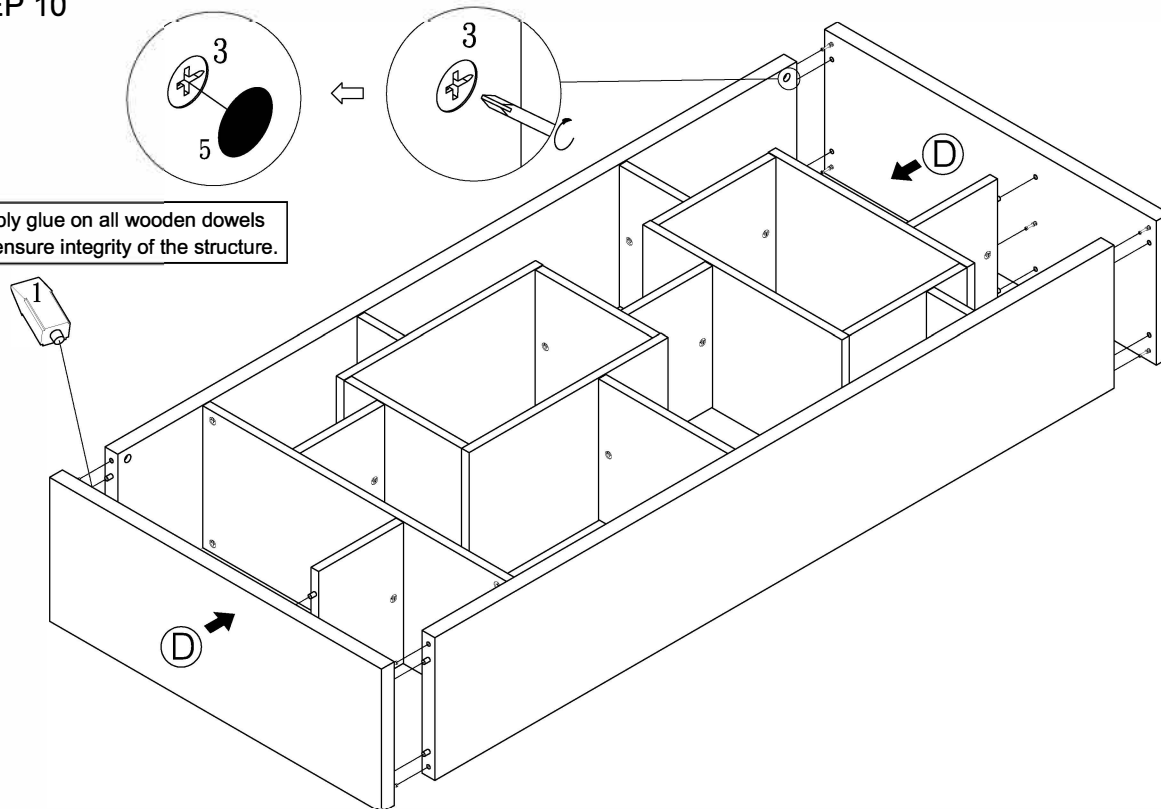
STEP 9

Apply glue on all wooden dowels to ensure integrity of the structure.



STEP 10

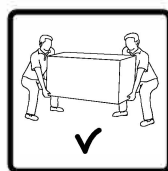
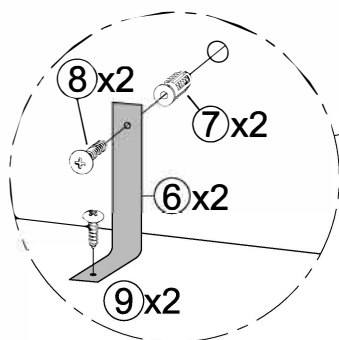
Apply glue on all wooden dowels to ensure integrity of the structure.



STEP 11

ATTENTION: ANTI TIPPING SAFEGUARD

Please install the anti-tipping hardware as shown in the drawing. This can help to prevent any tipping issues.



WARNING

Injury may result from tipping furniture

This restraint is not a substitute for proper adult supervision. This restraint may provide protection against tipping furniture.

Do not allow children to climb on furniture.

Failure to detach this restraint before moving furniture may result in injury and damage

