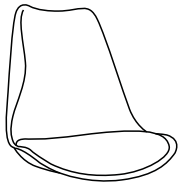


ASSEMBLY INSTRUCTION

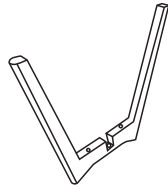
DINING CHAIR

A Chair Seat



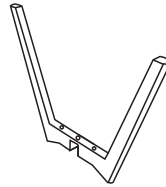
1pc

B Upper Leg Frame



1pc

C Lower Leg Frame



1pc

D Bolt

M6×50mm



4pcs

E Bolt

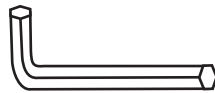
M6×35mm



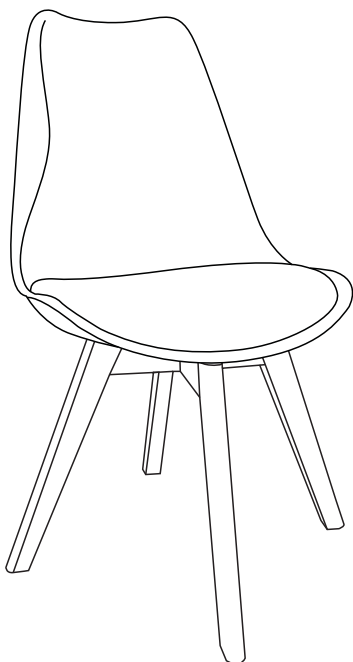
1pc

F Allen Key

M5

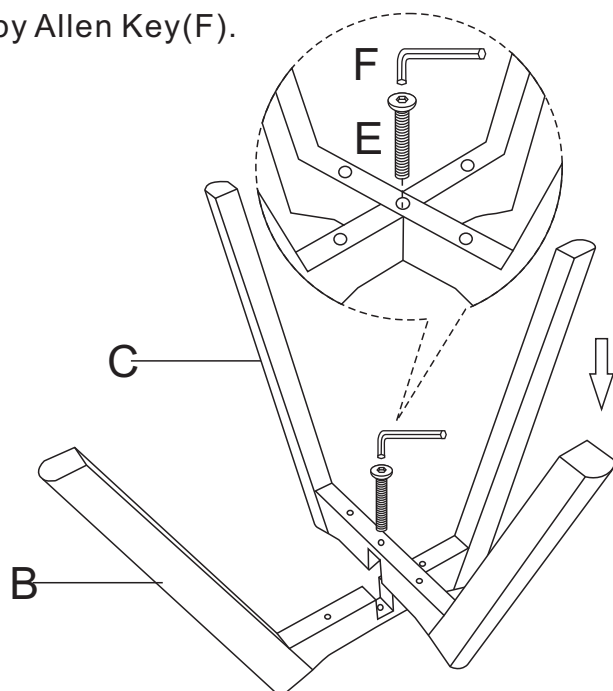


1pc



This page lists all the contents included in the box. Please take the time to identify the hardware as well as the individual components to this product. As you unpack and prepare for assembly, place the contents on a carpeted or padded area to protect them from damage.

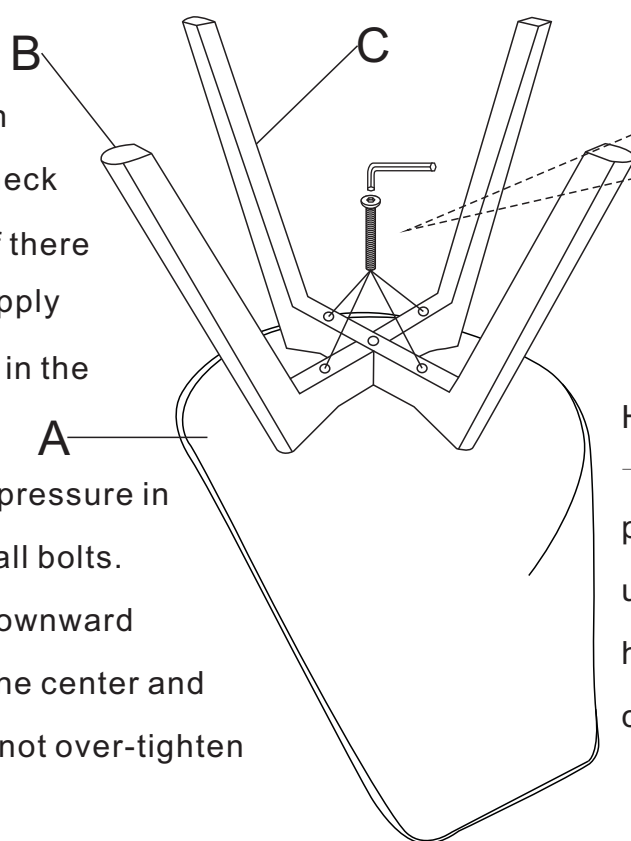
- 1** Assembly the Lower Leg Frame(C) and the Upper Leg Frame(B), using the Bolt(E) by Allen Key(F).



Take the Allen Key ,
and turn the bolts until
the legs are secure.
Do not tighten completely.
Stop when you feel you are adding
force to tighten the bolt.

- 2** Assembly the Chair Seat(A) on the Upper Leg Frame(B) and the Lower Leg Frame(C), using the Bolt(D) by Allen Key(F).

Stand chair up on an
even surface and check
that it is balanced. If there
is a slight wobble, apply
downward pressure in the
corner where a leg **A**
is uneven. Keeping pressure in
that corner, tighten all bolts.
If balanced, apply downward
pressure evenly in the center and
tighten all bolts. Do not over-tighten
beyond hole depth.



Helpful Tip:
-Instead of applying downward
pressure while reaching
under to tighten bolts,
have someone sit in the
chair while you tighten the bolts.

Cleaning & Care:

Treat surface with care. Surface is resistant to scratches but is not scratch resistant. Clean surfaces with a dry soft cloth. Do not use abrasive cleaners. Hardware may loosen over time. Periodically check that all connections are tight.