

ACCENT CHAIR



ASSEMBLY INSTRUCTION

ASSEMBLY TIPS:

- 1: Remove legs from box and sort by size.
- 2: Please check to see that all hardware and parts are present prior to start of assembly.
- 3: Please follow attached instructions in the same sequence as numbered to assure fast & easy assembly.



warning

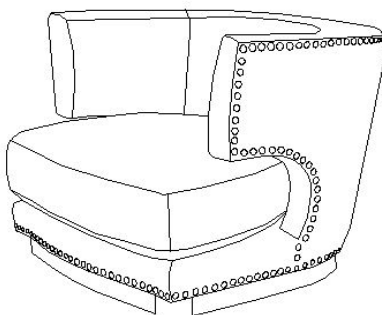
- 1: Don't attempt to repair or modify parts that are broken or defective please contact the store immediately.
- 2: This product is for home use only and not intended for commercial establishment.



ASSEMBLY TIME PER UNIT: 20 MINUTES

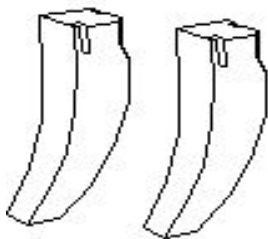
PARTS IDENTIFICATION:

(A) SEAT



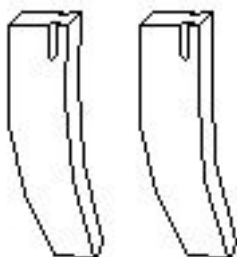
1 PC

(B) FRONT LEG



2 PCS

(C) REAR LEG

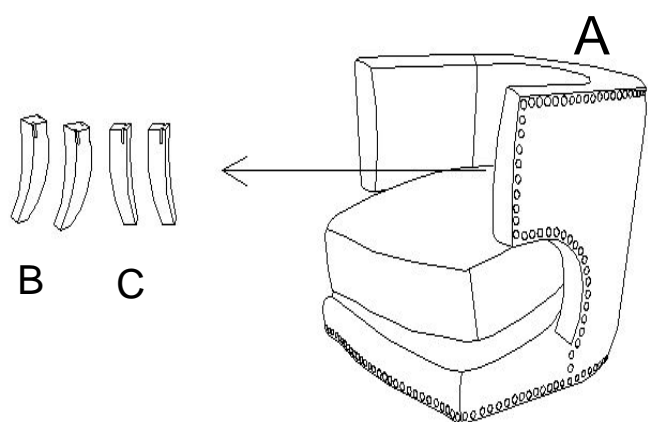


2 PCS

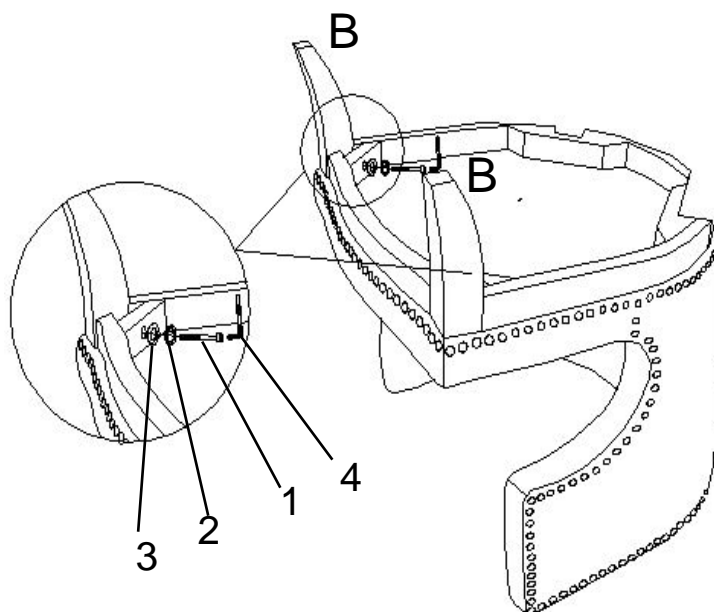
Z. HARDWARE PACKAGE:

NO	DESCRIPTION	FIGURE	Q'TY
1	SHORT BOLT M8*60MM		4PCS
2	BENT WASHER 8MM		4 PCS
3	WASHER (Φ8*Φ22)*2MM		4 PCS
4	ALLEN WRENCH M6		1 PC

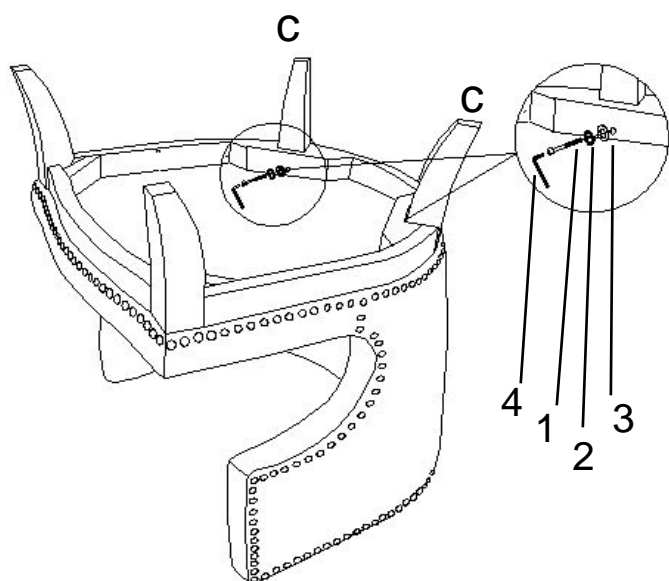
STEP 1:



STEP 2:



STEP 3:



STEP 4:

