

# **SOFA**

---

## **ASSEMBLY INSTRUCTIONS**



# ASSEMBLY INSTRUCTION

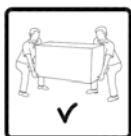
## ASSEMBLY TIPS:

1. Remove hardware from box and sort by size
2. Please check to see that all hardware and parts are present prior to start of assembly.
3. Please follow attached instruction in the same sequence as numbered to assure fast & easy assembly.



Warning!

1. Don't attempt to repair or modify parts that are broken or defective. Please contact the store immediately.



<b>ASSEMBLY TIME</b>	<b>5 MINUTES</b>
----------------------	------------------

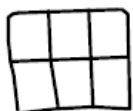
## PARTS IDENTIFICATION: Z HARDWARE PACKAGE

**A**



**SOFA 1PC**

**B**



**BACK CUSHION 3PCS**

**C**



**LEG 4PCS**

**D**

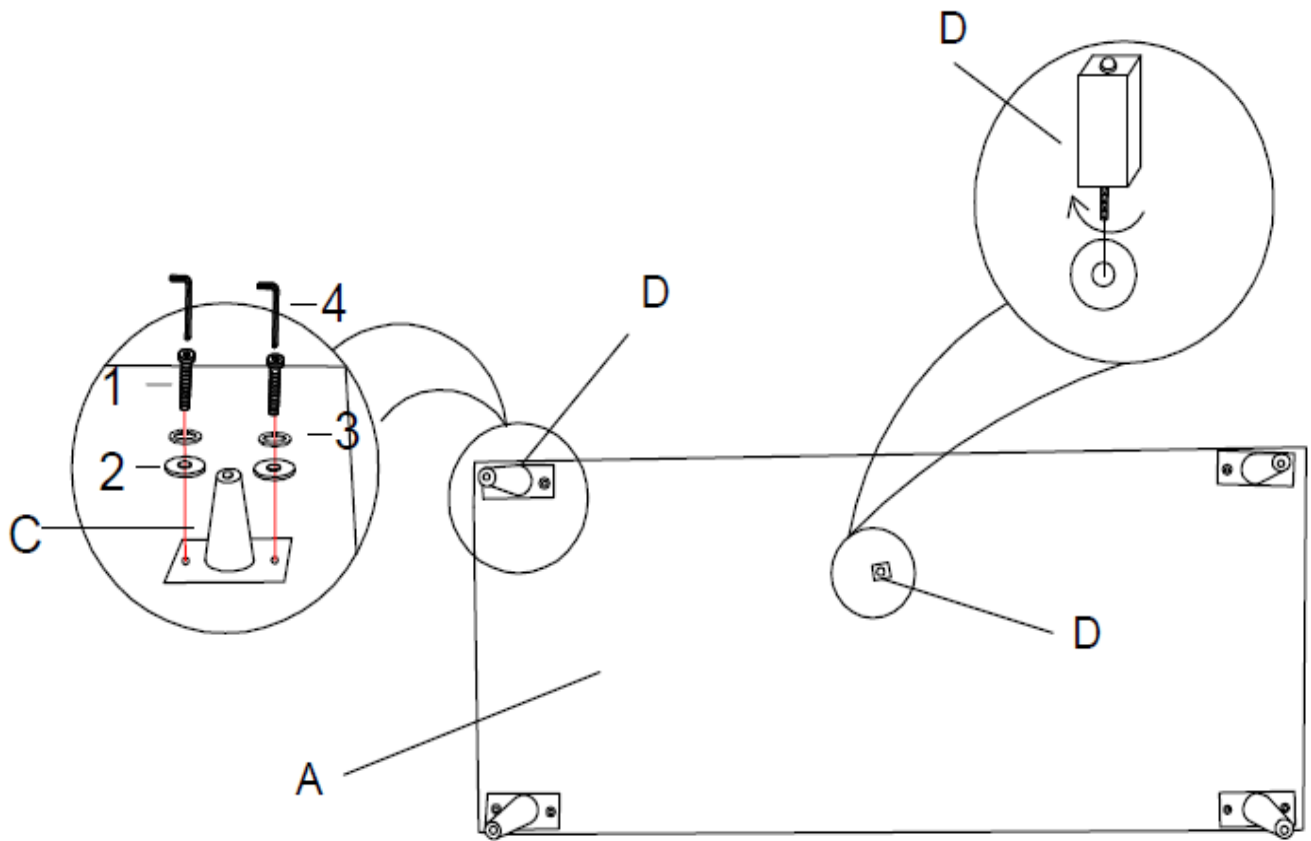


**MIDDLE LEG 1PC**

NO	DESCRIPTION	FIGURE	QTY
1	<b>BOLT (M8*35mm)</b>		<b>8PCS</b>
2	<b>FLAT WASHER (M8)</b>		<b>8PCS</b>
3	<b>SPRING WASHER (M8)</b>		<b>8PCS</b>
4	<b>ALLEN KEY (M8)</b>		<b>1PC</b>

# ASSEMBLY INSTRUCTION

## STEP 1



## STEP 2

