

Modular Loveseat Right



FEATURES

- Mix & match with other Travira Modular Deep Seating components to create unique outdoor environments
- Arrives fully assembled
- Quick-dry seat cushions with foam wrapped in water resistant bag and vented mesh bottom
- Leg end caps provide protection from marring and scratching surfaces
- Pair with Travira chat or occasional tables
- Low-maintenance and ideal for outdoor applications

MATERIALS

Powder-coated aluminum is durable and lightweight. Its rustproof nature ensures furniture will remain beautiful over its lifetime. Tekwood is a wood-alternative developed from polystyrene providing the look of wood without the weathering process. Solution-dyed polyester fabric is an economical option available on Quick Ship cushions with the look and feel of cotton but the strength, weather, and sun resistance of polyester. All materials are ideally suited to the outdoor environment and provide commercial-grade quality.

Seat Height	Assemb. Width	Assemb. Depth	Assemb. Height	Assemb. Weight Lbs.
18"	61.5"	32"	34.5"	49
Carton # of Boxes	Carton Width	Carton Depth	Carton Height	Carton Weight Lbs.
1	34"	62"	37"	72

CONSTRUCTION

Welded aluminum

HARDWARE

Stainless steel

SHIPPING

Ships via LTL

ASSEMBLY

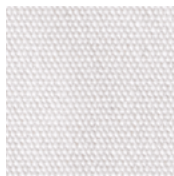
No assembly required

FRAME

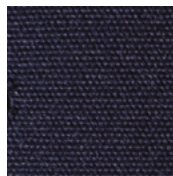


FLINT
POWDER COATED
ALUMINUM F

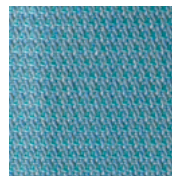
QUICK SHIP CUSHION FABRICS



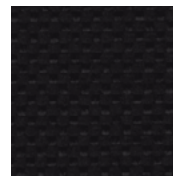
EGGSHELL WHITE EW
SOLUTION-DYED
POLYESTER



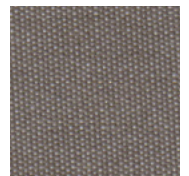
MIDNIGHT BLUE MB
SOLUTION-DYED
POLYESTER



ICE BLUE IB
SOLUTION-DYED
POLYESTER



JET BLACK JT
SOLUTION-DYED
POLYESTER



STONE ST
SOLUTION-DYED
POLYESTER

ARM CAP FINISHES



NATURAL
TEKWOOD N



VINTAGE
TEKWOOD V

Cushions also available in custom fabric or Customer's Own Material. Pricing, minimum order quantities, and lead times will vary; please call for more information.