

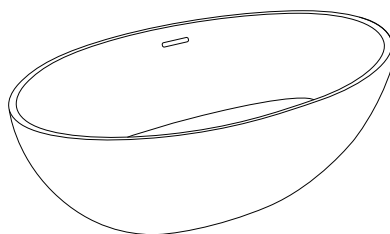
BATHTUB INSTALLATION INSTRUCTION

NOTE:

Due to the nature of the material, models can differ up to 20mm from the listed dimensions.

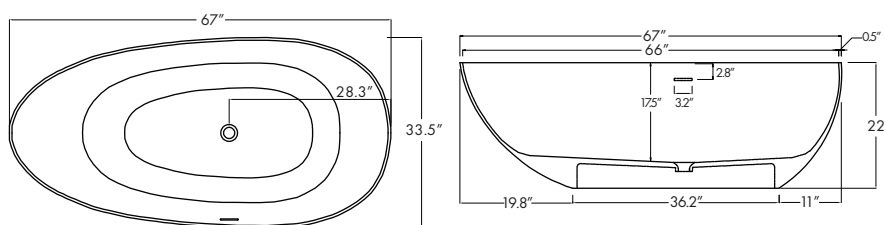
PACKING LIST

- Bathtub
- Drain Pipe



NOMINAL DIMENSIONS

MODEL#	BATHTUB SIZE
FS302-1700	67" * 33.5" * 22"

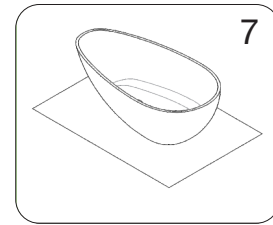
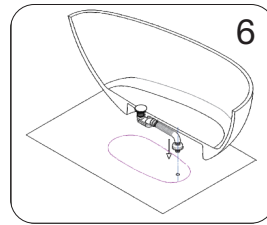
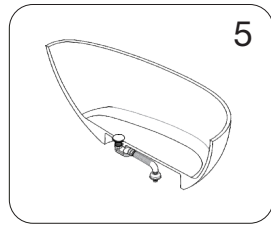
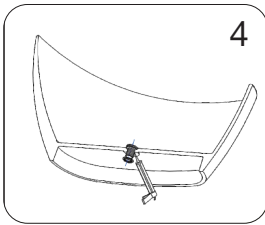
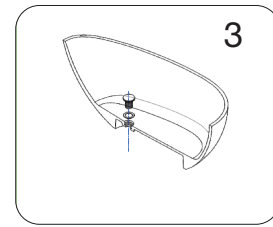
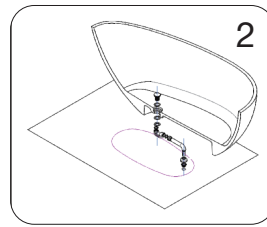
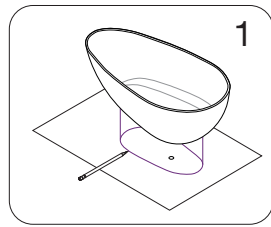
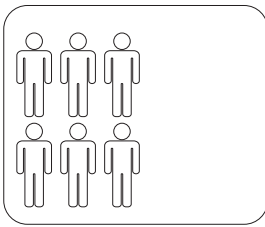


IMPORTANT

Before you begin installation, please read the following instructions and observe all local plumbing and building codes.

- Check the area where the bathtub will be installed to ensure that it is leveled and structurally sound.
- Please unwrap the bathtub and check it carefully for any damage that may have occurred during transportation.
- Store bathtub in a safe place until you begin installation to avoid damage to the tub's surface.
- We recommend that the installation of this tub be done by a qualified licensed professional.
- Because of its weight and volume we recommend that the installation of this tub be done with the help of at least one other person, a fall even what may seem like a minor one may result in cracking of the tub, moving straps and rubber gripped gloves are recommended.

Installation step diagram



Cleaning and Maintenance

Because resin is a very durable non porous material, resistant to scratches, stains and discoloration, it is very easy to maintain, however, there are a few do's and don'ts that will ensure that your tub does not lose its luster throughout the years.

- Do clean it with a soft dry cloth after use.
- Do not use abrasive cleaners, cleaners containing acid, alkali or ammonia to remove stains.
- Do not expose the surface of this tub to hair dye or nail varnish as this may cause stains.

If your tub develops minor scratches they may be removed by scrubbing gently with the fine grit sand paper, a soft brush or a non-abrasive sponge and a mild abrasive cream cleaner, in addition, should the minor scratches remain or you would like to polish the area in question to its original finish, you can perform the following procedure.

Gloss Finish

- Clean the surface with water, making sure no dust remains.
- Using water, polish the area starting with 800 grit sand paper, then 1500 grit and finally 2000 grit, if a finer finish is desired you can give it a final sanding/polishing with 3000 grit sandpaper.
- Dry using a clean dry cloth.
- Wipe up the remaining wax with a clean and dry cloth.

Matte finish

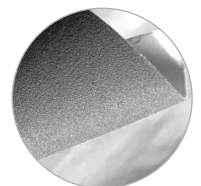
- Clean the surface with water, make sure no dust remains.
- Using water, polish the area starting with 800 grit sand paper,
- Wipe up the remaining wax with a clean dry cloth.



soft dry cloth



Microfiber cloth



sand paper